

19800  
19800

LEGEND

- ▲ SET NETWORK POINT
- SET STRATEGIC POINT
- TERRESTRIAL OBSERVATION LINE
- GPS OBSERVATION
- OPUS ONLINE POSITIONING USER SERVICE (SEE NARRATIVE - SHEET 1)
- EXISTING BRIDGE

THE N.W. 1/4 OF SEC. 25, T. 36 S., R. 4 W., W.M.

INDEX

- SHEET 1 NARRATIVE AND CONTROL STATION DESCRIPTIONS NETWORK OBSERVATIONS AND ADJUSTMENTS
- SHEET 2 ROW INFORMATION, MONUMENT RECOVERY POSITIONS, AND DESCRIPTIONS

GPS VECTORS

FROM	TO	ROOT MEAN SQUARE (FT)
10	20	0.0627466
10	60	0.0663273
10	70	0.1790320
10	80	0.0900064
80	20	0.0456853
80	60	0.0964890
80	70	0.2200208

DISTANCE RESIDUALS

FROM	TO	RESIDUAL
10	11	0.0005
10	20	-0.0006
10	30	0.0005
11	10	-0.0010
11	20	-0.0023
20	10	0.0004
20	30	-0.0024
30	10	-0.0015
30	20	0.0020
30	40	-0.0016
30	50	-0.0024
40	30	-0.0026
40	50	0.0018
40	70	0.0004
40	100	0.0001
50	40	-0.0007
50	60	-0.0005
60	50	-0.0018
70	40	0.0019
70	80	0.0009
70	90	-0.0001
80	70	-0.0165
100	40	-0.0075

ANGLE RESIDUALS

B. S.	INSTR.	F. S.	RESIDUAL
10	20	11	-0°00'02.83
10	20	30	-0°00'03.02
10	30	11	0°00'02.10
10	30	20	0°00'03.40
20	10	30	-0°00'00.43
30	20	10	-0°00'03.31
30	20	40	-0°00'02.52
40	30	50	-0°00'02.31
40	30	100	-0°00'05.75
40	50	70	-0°00'00.76
40	50	100	0°00'04.36
50	40	60	0°00'00.44
70	40	80	0°00'00.39
70	40	90	0°00'01.47
70	80	40	-0°00'00.26
70	80	90	-0°00'01.45

B.S.=BACKSIGHT F.S.=FORE SIGHT  
INSTR. = INSTRUMENT

NARRATIVE:

**PURPOSE:**  
THIS SURVEY WAS MADE IN PREPARATION FOR BRIDGE REPAIR ALONG I5 - U.S. HIGHWAY 60, JACKSON COUNTY, OREGON. THIS SURVEY SERVES TO:  
1) ESTABLISH HORIZONTAL AND VERTICAL SURVEY CONTROL;  
2) LOCATE AND DOCUMENT THE POSITIONS OF ANY MONUMENTS OF RECORD THAT MAY BE DESTROYED DURING CONSTRUCTION OF THE IMPROVEMENTS;  
3) RESOLVE THE EXISTING RIGHT-OF-WAY (R/W).

**HORIZONTAL NETWORK ADJUSTMENT**  
GPS OBSERVATIONS WERE MADE USING TRIMBLE 5700 AND 5800 DUAL FREQUENCY RECEIVERS ON MARCH 27-28 AND APRIL 3-4, 2007. TERRESTRIAL OBSERVATIONS WERE MADE USING A TRIMBLE 5603 ON MARCH 27-29 AND APRIL 4-5, 2007. THE GPS AND TERRESTRIAL OBSERVATIONS WERE SIMULTANEOUSLY ADJUSTED USING STAR\*NET LEAST SQUARE ADJUSTMENT SOFTWARE. THE NAD 83 (GORS96) (EPOCH 2002.0000) POSITIONS OF STATION 10 & STATION 80, AS DETERMINED BY AVERAGING THE RESULTS OF 2 GLOBAL POSITIONING SYSTEM OBSERVATION SESSIONS RESOLVED USING THE NATIONAL GEODETIC SURVEY'S (NGS) ON-LINE POSITIONING USER SERVICE (OPUS), WERE HELD AS SHOWN. THE RESULTING ADJUSTMENT RESIDUALS AND COORDINATE VALUES ARE SHOWN ON SHEET 2 OF THIS SURVEY.

**HORIZONTAL DATUM**  
THE HORIZONTAL DATUM IS ON A LOCAL DATUM PLANE (LDP) REFERENCED TO OREGON COORDINATE SYSTEM OF 1983, SOUTH ZONE (STATE PLANE). THE PROJECT COMBINED SCALE FACTOR IS 0.9999314318, COMPUTED FROM THE AVERAGE VALUE FOR ALL CONTROL POINTS OF THIS PROJECT.

**VERTICAL CONTROL**  
ELEVATIONS FOR CONTROL POINTS WERE DETERMINED BY DIFFERENTIAL LEVELS RUN IN A CLOSED CIRCUIT USING A LEICA DNA03 DIGITAL LEVEL ON MARCH 27, 2007. THE UNADJUSTED CLOSURE OF THIS LEVEL LOOP WAS 0.009 FEET. NO ADJUSTMENT OF THE DATA WAS MADE. ELEVATIONS FOR MONUMENTS IN THIS LOOP ARE REFERENCED TO NATIONAL GEODETIC SURVEY (NGS) BENCHMARK Z 549, A 3/2" DIAMETER BRASS DISK IN THE SW END OF A CONCRETE CULVERT PASSING UNDER THE RAILROAD TRACKS APPROXIMATELY 70 FEET NORTHEASTERLY OF TWIN BRIDGES ROAD. ELEVATION 1026.30 FEET (312.817 METERS.)

**VERTICAL DATUM**  
THE VERTICAL DATUM IS THE NORTH AMERICAN VERTICAL DATUM OF 1988 (NAVD 88).

**BASIS OF BEARING**  
THE BASIS OF BEARING IS THE OREGON COORDINATE SYSTEM OF 1983, SOUTH ZONE, BASED ON GLOBAL POSITIONING SYSTEM (GPS) OBSERVATIONS.

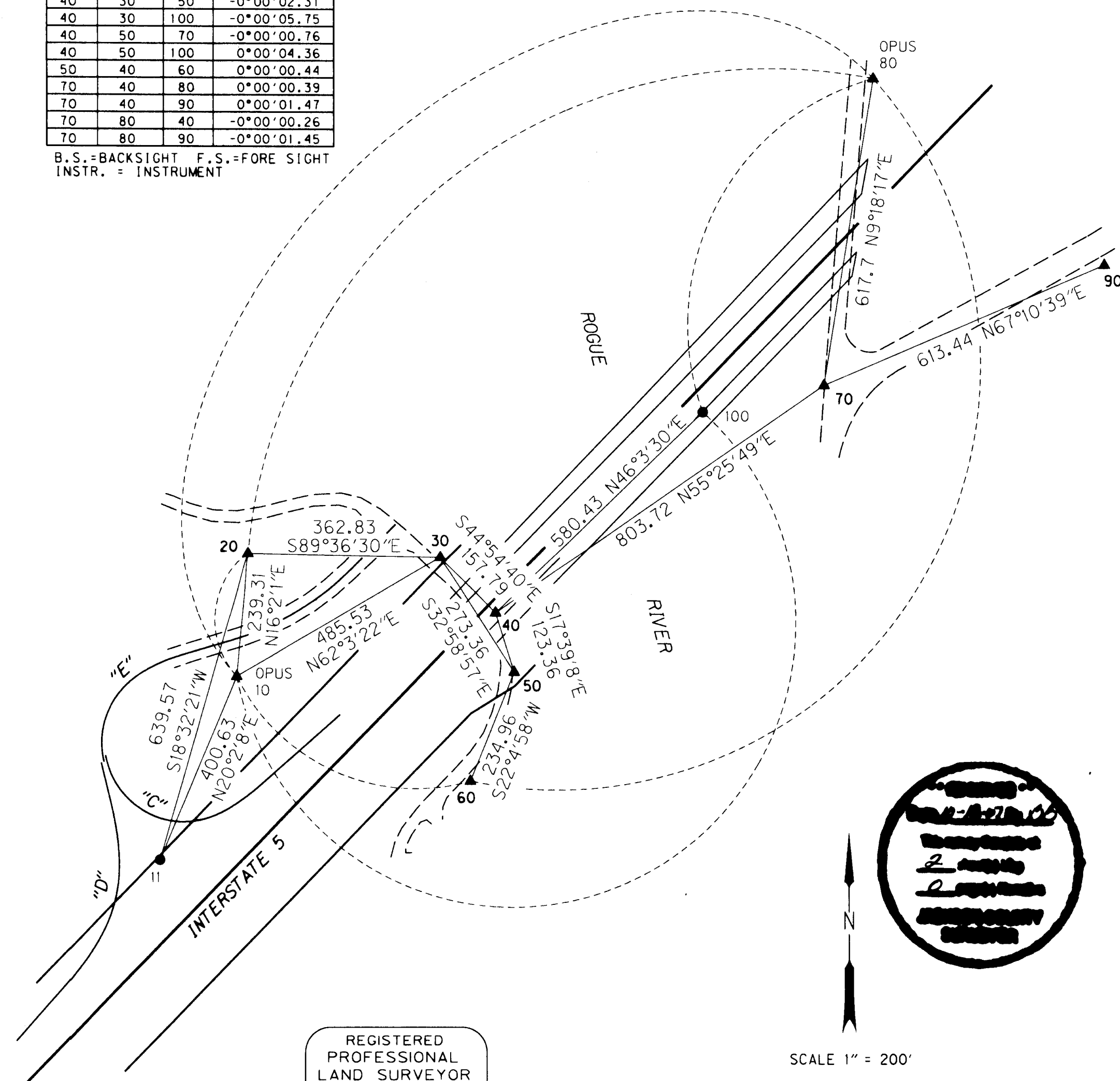
**RIGHT OF WAY RESOLUTION**  
THE I5 - HWY 60 CENTER LINE WAS ESTABLISHED BY HOLDING THE FOUND MONUMENT (1000) AS THE CENTER LINE, THE FOUND MONUMENT (1003) FOR STATION "1-5 690+00.00" AT A 125.00 FOOT OFFSET, AND THE FOUND MONUMENT (1007) AT A 125.00 FOOT OFFSET. REMAINING CENTER LINES AND RIGHT OF WAY LINES ARE SHOWN PER ODOT DRAWING NO. 88-6-5 AND ODOT CONSTRUCTION MAP NO. 7V-274, PROJECT I5-1(K43)46 "VALLEY OF THE ROGUE PARK INTER. SECTION" DATED OCTOBER, 1962.

NETWORK/TRVERSE POINT COORDINATE/DESCRIPTION TABLE LDP = LOCAL DATUM PLANE (SEE NARRATIVE)

PT. NO.	LDP NORTHING	LDP EASTING	ELEV.	DESCRIPTION
10	283657.2006	4211662.0790	1024.48	SET 5/8"x30" IRON ROD W/BUE PLASTIC CAP STAMPED "BLUEDOT CONTROL"
11	283280.8478	4211525.2203	1029.42	SET 5/8"x30" IRON ROD W/BUE PLASTIC CAP STAMPED "BLUEDOT CONTROL"
20	283887.2060	4211728.1735	1025.85	SET 5/8"x30" IRON ROD W/BUE PLASTIC CAP STAMPED "BLUEDOT CONTROL"
30	283884.7254	4212090.9940	1025.21	SET 5/8"x30" IRON ROD W/BUE PLASTIC CAP STAMPED "BLUEDOT CONTROL"
40	283772.9775	4212202.3972	1018.13	SET 5/8"x30" IRON ROD W/BUE PLASTIC CAP STAMPED "BLUEDOT CONTROL"
50	283655.4237	4212239.8044	1016.65	SET 5/8"x30" IRON ROD W/BUE PLASTIC CAP STAMPED "BLUEDOT CONTROL"
60	283437.6969	4212151.4692	1013.15	SET 5/8"x30" IRON ROD W/BUE PLASTIC CAP STAMPED "BLUEDOT CONTROL"
70	284229.0136	4212864.2117	1026.13	SET 5/8"x30" IRON ROD W/BUE PLASTIC CAP STAMPED "BLUEDOT CONTROL"
80	284838.5909	4212964.0854	1030.66	SET 5/8"x30" IRON ROD W/BUE PLASTIC CAP STAMPED "BLUEDOT CONTROL"
90	284466.9515	4213429.6283	1033.07	SET 5/8"x30" IRON ROD W/BUE PLASTIC CAP STAMPED "BLUEDOT CONTROL"
100	284175.7516	4212620.3354	1023.53	SET 5/8"x30" IRON ROD W/BUE PLASTIC CAP STAMPED "BLUEDOT CONTROL"

NETWORK/TRVERSE POINT COORDINATE CONVERSION TABLE LDP = LOCAL DATUM PLANE (SEE NARRATIVE - SHEET 1) SPC = STATE PLANE COORDINATE ELEV. = ELEVATION

PT. NO.	LDP NORTHING	LDP EASTING	SPC NORTHING	SPC EASTING	LATITUDE (N)	LONGITUDE (W)	STATION	OFFSET	ELEV.	SEMI MAJOR AXIS	ORIENTATION	SEMI MINOR AXIS
10	283657.2006	4211662.0790	283637.7508	4211373.2929	42°24'51.661690	123°07'45.155650	1-5' 687+16.16	284.06 LT	1024.48	HELD	HELD	
11	283280.8478	4211525.2203	283261.4238	4211236.4436	42°24'47.903592	123°07'46.821605	1-5' 689+26.74	397.76 LT	1029.42	0.0116	109°48	0.0025
20	283887.2060	4211728.1735	283867.7404	4211439.3829	42°24'53.952982	123°07'44.371261	1-5' 691+78.82	136.81 LT	1025.85	0.0055	107°38	0.0020
30	283884.7254	4212090.9940	283865.2600	4211802.1785	42°24'54.040948	123°07'39.536073	1-5' 691+76.93	20.97 RT	1025.21	0.0095	148°37	0.0021
40	283772.9775	4212202.3972	283753.5197	4211913.5741	42°24'52.972198	123°07'38.005034	1-5' 691+19.11	129.95 RT	1018.13	0.0096	148°03	0.0035
50	283655.4237	4212239.8044	283635.9739	4211950.9787	42°24'51.823199	123°07'37.457482	1-5' 689+01.75	219.18 RT	1016.65	0.0099	143°40	0.0051
60	283437.6969	4212151.4692	283418.2621	4211862.6496	42°24'49.646254	123°07'38.543393	1-5' 699+65.80	174.73 RT	1013.15	0.0137	121°59	0.0071
70	284229.0136	4212864.2117	284209.5245	4212575.3432	42°24'57.679512	123°07'29.377675	1-5' 704+71.20	180.42 LT	1026.13	0.0050	109°19	0.0028
80	284838.5909	4212964.0854	284819.0601	4212675.2100	42°25'03.728680	123°07'28.301570	1-5' 705+31.41	412.22 RT	1030.66	HELD	HELD	
90	284466.9515	4213429.6283	284447.4461	4213140.7210	42°25'00.203582	123°07'21.943352	1-5' 697+57.12	37.76 RT	1033.07	0.0128	156°54	0.0055
100	284175.7516	4212620.3354	284156.2661	4212331.4836	42°24'57.078164	123°07'32.604836	1-5' 690+00.09	0.03 RT	1023.53	0.0195	141°59	0.0054



REGISTERED PROFESSIONAL LAND SURVEYOR  
*Mark Mayer*  
OREGON  
JULY 14, 1998  
MARK J. MAYER  
2887  
RENEWAL: 12-31-08

**bluedot group**  
land surveying & mapping  
6885 sw hampton, suite 101  
portland, or 97223  
v. 503.624.0108  
f. 503.624.9058

SCALE 1" = 200'  
200 100 0 200 400 600  
FEET  
CAD FILE: 07002 ROS.DGN

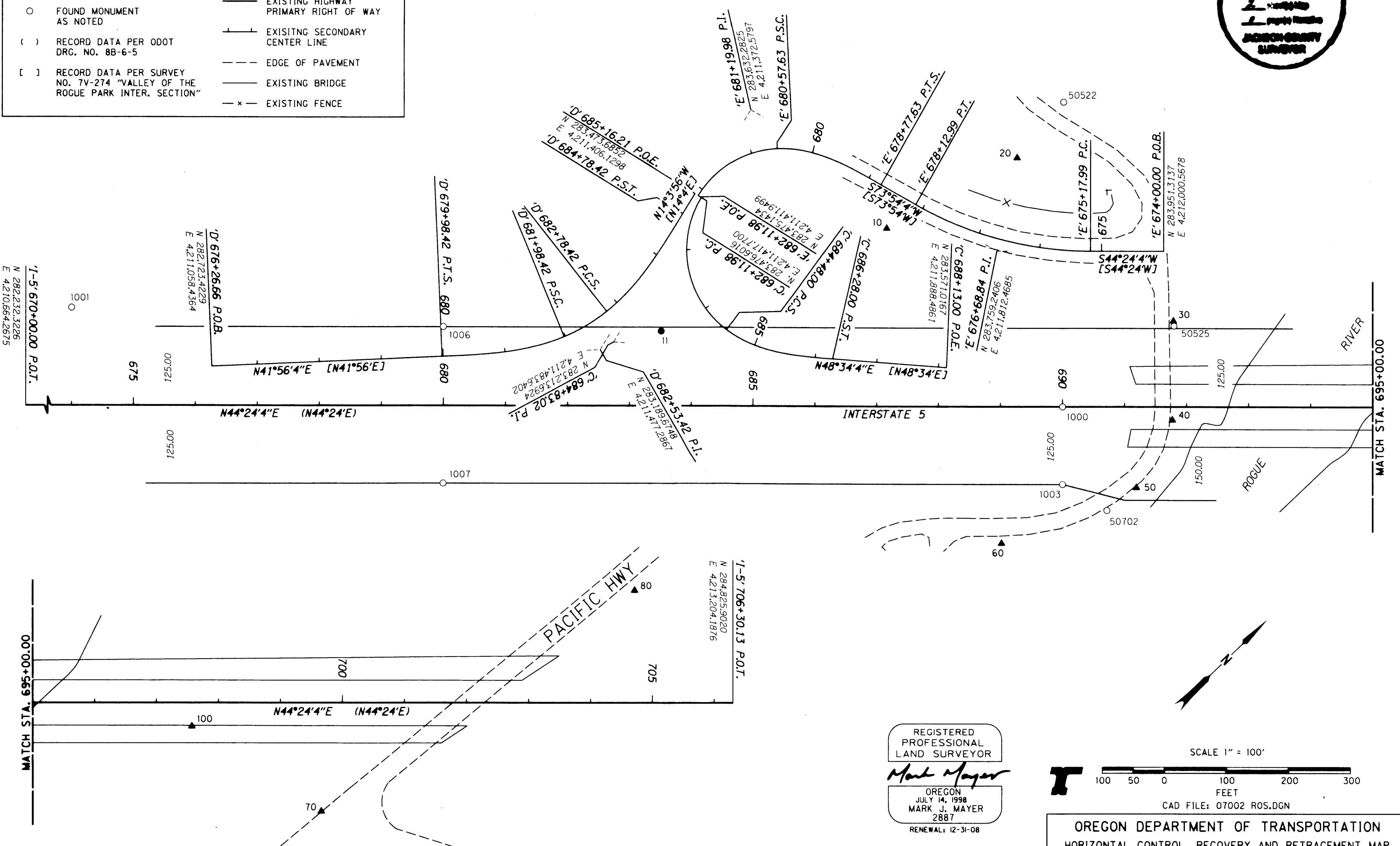
OREGON DEPARTMENT OF TRANSPORTATION  
HORIZONTAL CONTROL, RECOVERY AND RETRACEMENT MAP  
15 HOMESTEAD - HWY 60 BRIDGES NO. 08383N & 08383S  
U.S. HIGHWAY 60 (INTERSTATE 5)  
JACKSON COUNTY, OREGON  
SEPTEMBER 18, 2007 FOR ODOT REGION 3 SCALE: 1" = 200'  
3500 NW STEWART PKWY ROSEBURG, OR 97470  
BUNDLE 313 SHEET 1 OF 2

19800  
19800



LEGEND

▲	SET NETWORK PT.	—	EXISTING HWY PRIMARY R/W CENTER LINE
●	SET STRATEGIC POINT.	—	EXISTING HIGHWAY PRIMARY RIGHT OF WAY
○	FOUND MONUMENT AS NOTED	—	EXISTING SECONDARY CENTER LINE
( )	RECORD DATA PER ODOT DRG. NO. 8B-6-5	---	EDGE OF PAVEMENT
[ ]	RECORD DATA PER SURVEY NO. 7V-274 "VALLEY OF THE ROGUE PARK INTER. SECTION"	—	EXISTING BRIDGE
		-x-	EXISTING FENCE

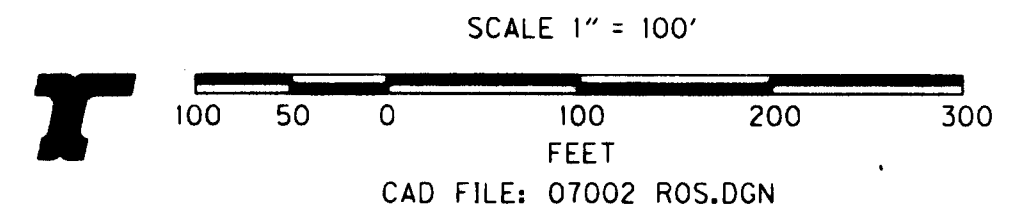


FOUND MONUMENT COORDINATE TABLE LDP = LOCAL DATUM PLANE (SEE NARRATIVE - SHEET 1) CS = COUNTY SURVEY ( ) = SURVEY RECORD NUMBER

PT. NO.	LDP NORTHING	LDP EASTING	STATION	OFFSET	DESCRIPTION
1000	283661.285	4212063.712	'1-5' 690+00.09	0.00 RT	FOUND 3" BRASS DISC STAMPED "STATE HIGHWAY DEPARTMENT", SET IN CONCRETE. HELD.
1001	283626.874	4210833.197	'1-5' 674+00.09	155.37 LT	FOUND 1/2" IRON ROD, NO CAP, UNDER WIRE FENCE. GOOD CONDITION.
1003	283573.804	4212152.906	'1-5' 690+00.00	125.00 RT	FOUND 1/2" IRON ROD, NO CAP, 0.2' DOWN, 0.6' SW OF 4x4 WOOD POST MARKED, "POT 690+00". HELD.
1006	283034.463	4211274.492	'1-5' 680+00.06	125.26 LT	FOUND 1/2" IRON ROD, 1.3' DOWN, BADLY BENT HORIZONTAL.
1007	282858.916	4211452.834	'1-5' 679+99.42	125.00 RT	FOUND 1/2" IRON ROD, 1.7' DOWN, SLIGHTLY BENT, 0.2' FROM "T" POST. HELD.
50522	284003.123	4211716.534	'E' 675+92.62	236.33 RT	FOUND TOP OF COTTON GIN SCREW
50525	283879.895	4212097.208	'1-5' 691+79.72	128.99 LT	FOUND TOP OF COTTON GIN SCREW
50702	283595.960	4212232.552	'1-5' 690+71.56	166.37 RT	FOUND TOP OF COTTON GIN SCREW

REGISTERED PROFESSIONAL LAND SURVEYOR  
*Mark Mayer*  
 OREGON  
 JULY 14, 1998  
 MARK J. MAYER  
 2887  
 RENEWAL: 12-31-08

**bluedot group**  
 land surveying & mapping  
 6666 sw hampton, suite 101  
 portland, or 97223  
 v. 503.824.0108  
 f. 503.824.9068



OREGON DEPARTMENT OF TRANSPORTATION  
 HORIZONTAL CONTROL, RECOVERY AND RETRACEMENT MAP  
 15 HOMESTEAD - HWY 60 BRIDGES NO. 08383N & 08383S  
 U.S. HIGHWAY 60 (INTERSTATE 5)  
 JACKSON COUNTY, OREGON  
 SEPTEMBER 18, 2007 FOR ODOT REGION 3 SCALE: 1" = 100'  
 3500 NW STEWART PKWY ROSEBURG, OR 97470  
 BUNDLE 313 SHEET 2 OF 2