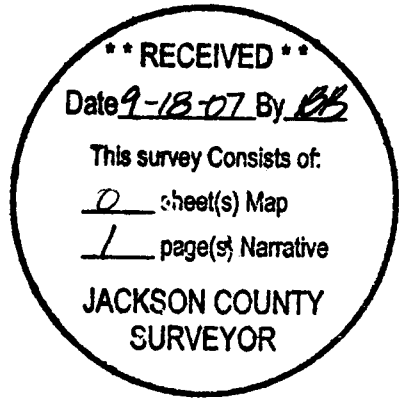


OREGON CORNER RESTORATION FORM

19763

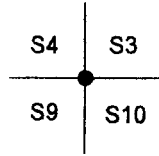
19763

Section 10 Township 34 Range 3 E
County Jackson Date 9/5/07



Corner Designation

T. 34 S. R. 3 E.



- Condition Report Only
Not Found
Renewed
Unrecorded
Surveyed In
Referenced Out

Previous Renewals/Surveys, etc.

1964 BLM REMONUMENTATION

Monument(s) & Accessories Found: (Condition and Source)

12" FIR SNAG BEARS N52°W 95.0 FEET (RECORD N54 1/2°W 94.5 FEET) VISIBLE SCRIBING

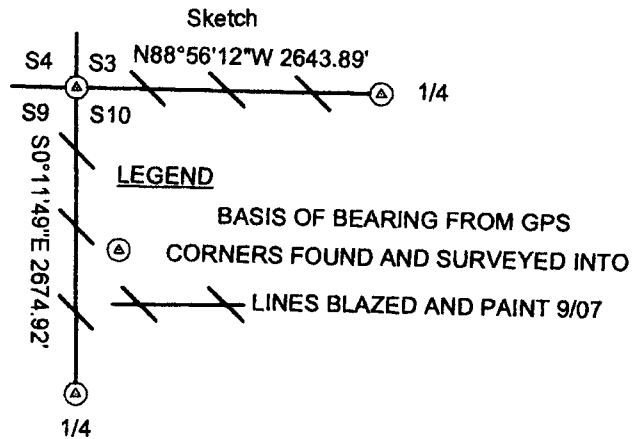
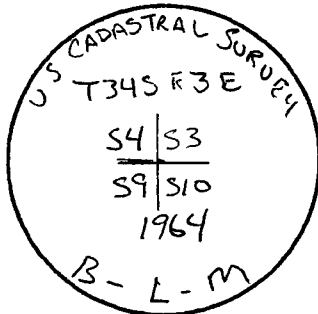
FOUND 35" WHITE FIR AT N24°E 208.56 FEET

FOUND 43" P. PINE STUMP AT S25°W 207.24 FEET

FOUND 38" WHITE FIR AT N85°W 155.1 FEET

FOUND 7" FIR AT N26 1/2 E IS DOWN AND UPROOTED

Monument Detail



New Accessories

18" CEDAR BEARS S75 1/2°E 25.4 Ft. WE SCRIBE T.34 S. R. 3 E. S10 BT AND TAG

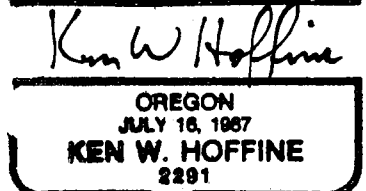
21" PINE BEARS S8 3/4°W 175.8 FT. WE SCRIBE T. 34 S. R. 3 E. S9 BT AND TAG

Location & Comments

Corner lies flat ground approx. N59°W 17.5 feet from fence corner. An approx. six foot by six foot wire cage is covering the corner.

Basis of Bearing GPS
Firm/Agency Lone Rock Timber Co.
Address P. O. Box 1127 Roseburg, Ore. 97470
Party Chief Ken W. Hoffine
Notes Gary Angiolet
Witness Ignacio Roman

Surveyor's Seal



Expires 6-30-09

19763