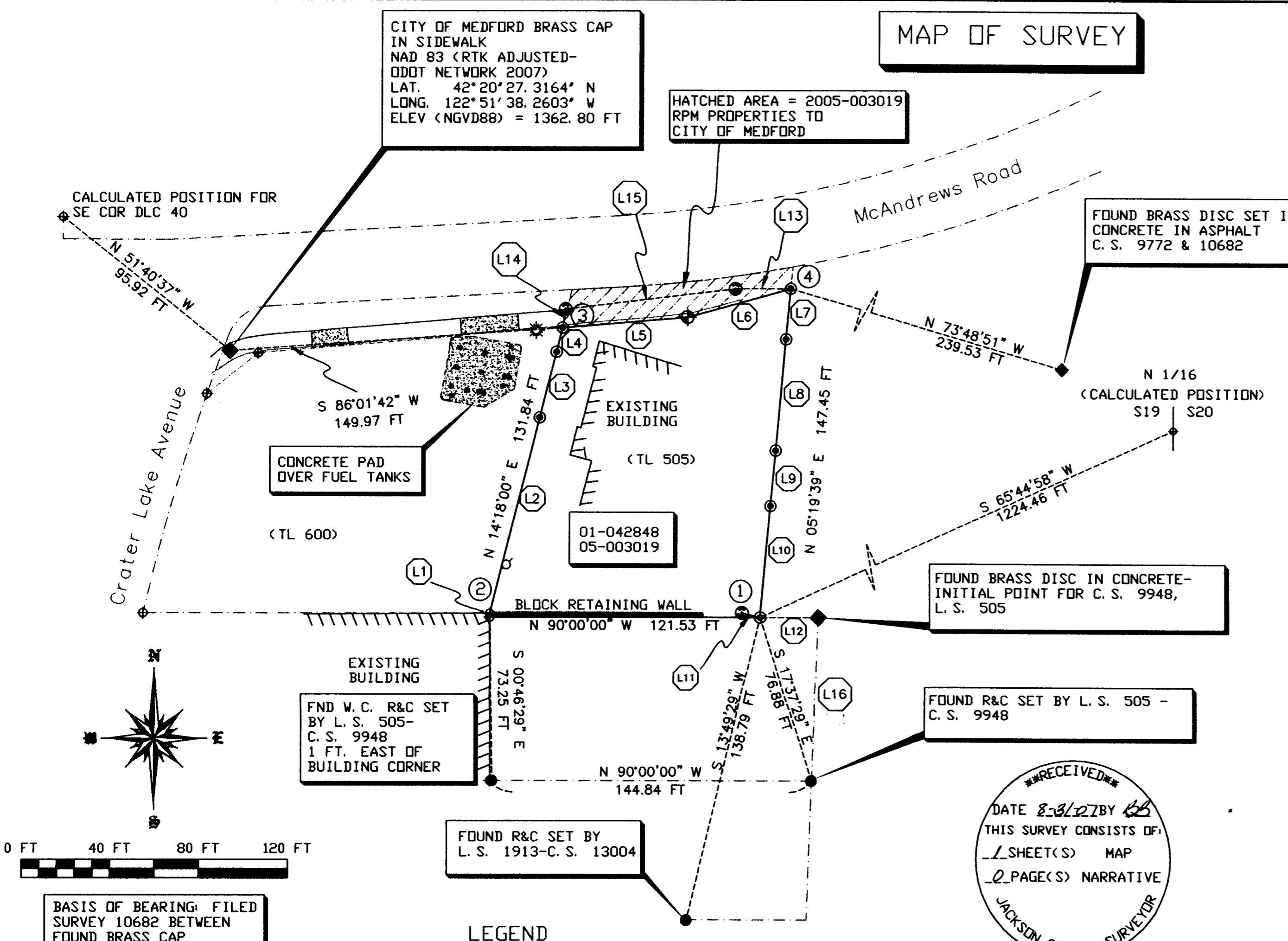


MAP OF SURVEY

SURVEY NO. 19751



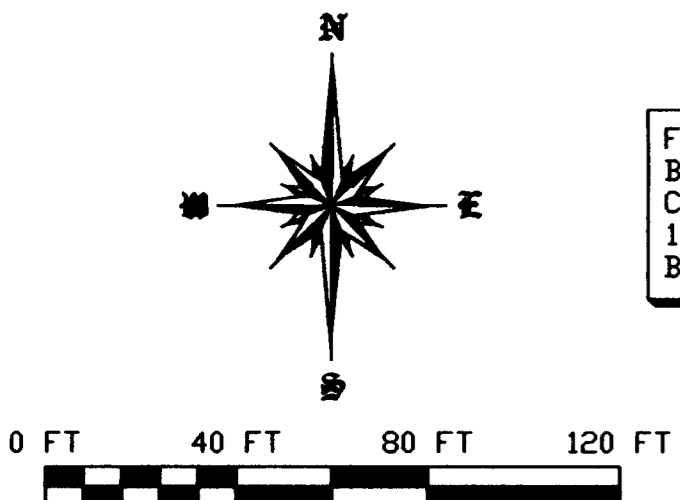
- ①
MONUMENT INFORMATION
1. SET A MAG NAIL AND STAINLESS STEEL WASHER IN ASPHALT DRIVEWAY. CORNER LIES OVER A POWER EASEMENT. FROM WHICH, RECOVERED MONUMENTS FROM RECORDED SURVEYS ARE AS SHOWN. SET A 1-INCH DIAMETER BRASS CAP IN A LARGE FLAT ROCK, IN A DRILL HOLE AND FLUSH WITH THE SURFACE, MARKED SBLS LS2332 (LINE 11)
 2. CORNERS LIES NEAR A BUILDING CORNER. DETECTED THE SOUTHERLY IRON PIN UNDER THE ASPHALT SURFACE OF A PARKING AREA (SEVERAL FEET DEEP). PLASTIC PVC PIPE FOUND OVER IRON PIN. A BLOCK RETAINING WALL FOR EXISTING PARKING AREA ENCRDACHES BY ABOUT 1.6 FEET.
 3. SET A MAG NAIL AND STAINLESS STEEL WASHER IN ASPHALT SURFACE. CORNER LIES OVER EXISTING UNDERGROUND UTILITIES. SET A 1-INCH DIAMETER BRASS CAP IN CURB, IN A DRILL HOLE AND FLUSH WITH THE SURFACE, MARKED SBLS LS2332 (REFERENCE LINE 14) ALSO, SET A 5/8-INCH DIAMETER X 30-INCH LONG IRON PIN WITH RED PLASTIC CAP MARKED BAROTT LS2332, ON THE PROPERTY LINE (REFERENCE LINE 5) CITY OF MEDFORD BRASS CAP MONUMENT AS SHOWN
 4. SET A MAG NAIL AND STAINLESS STEEL WASHER IN ASPHALT SURFACE OF DRIVEWAY. POINTS ALONG LINE IN A SOUTHERLY DIRECTION WERE MARKED BY MAG NAILS WITH STAINLESS STEEL WASHERS. SET A 1-INCH DIAMETER BRASS CAP IN CONCRETE CURB, IN A DRILL HOLE AND FLUSH WITH THE SURFACE, MARKED SBLS LS2332 (REFERENCE LINE 13) ALSO, SET A 5/8-INCH DIAMETER X 30-INCH LONG IRON PIN WITH RED PLASTIC CAP MARKED BAROTT LS2332, ON THE PROPERTY LINE (REFERENCE LINE 6)

SURVEY NARRATIVE TO COMPLY WITH O. R. S. 209.250

PURPOSE: TO MARK THE BOUNDARY AS DESCRIBED IN DEED 01-042848 EXCEPTING THEREFROM THE PORTION ALONG MCANDREWS ROAD DEEDED TO THE CITY OF MEDFORD AS DESCRIBED IN DEED 05-003019.

PROCEDURE: TIES TO FOUND MONUMENTS AS RECORDED IN JACKSON COUNTY SURVEYOR'S OFFICE AS C. S. 9772, 9948, 10682, AND 13004 ARE AS SHOWN. UTILIZING FOUND CONTROL, A CLOSED TRAVERSE WAS PERFORMED AROUND MY CLIENT'S PARCEL. AT THE CALCULATED CORNER POSITIONS, PERMANENT MONUMENTS COULD NOT BE SET DUE TO UNDERGROUND UTILITIES (TOO CLOSE TO THE ASPHALT SURFACE) AND BUILDING CORNERS. ACCESSORIES AND CORNER TIES ARE NOTED ON THE MAP OF SURVEY. WITH THE EXCEPTION OF THE SOUTHWEST CORNER OF SAID PARCEL (WHICH IS VERY CLOSE TO AN EXISTING BUILDING), MAG NAILS AND STAINLESS STEEL WASHERS WERE SET AT THE CORNER POINTS.

EQUIPMENT: LEICA TCPR 1203 SMARTSTATION, UTILIZING RTK GPS ADJUSTED FROM THE ODOT NETWORK.



BASIS OF BEARING: FILED SURVEY 10682 BETWEEN FOUND BRASS CAP MONUMENTS

① LINE TABLE

LINE	BEARING	DISTANCE
L1	N 00°04'11" E	1.64 FT
L2	N 14°18'00" E	90.45 FT
L3	N 14°17'59" E	30.32 FT
L4	N 14°17'59" E	11.07 FT
L5	N 85°12'52" E	56.40 FT
L6	N 74°41'50" E	48.16 FT
L7	S 05°19'39" W	22.45 FT
L8	S 05°19'39" W	50.00 FT
L9	S 05°19'39" W	25.00 FT
L10	S 05°19'39" W	50.00 FT
L11	N 75°51'50" W	8.44 FT
L12	S 90°00'00" E	26.23 FT
L13	S 89°42'09" W	24.90 FT
L14	N 09°26'22" E	8.24 FT
L15	S 83°09'44" W	76.96 FT
L16	S 02°20'18" W	73.37 FT

- ① 1-INCH DIAMETER BRASS CAP MARKED AS SHOWN
- ⊙ MAG NAIL AND STAINLESS STEEL WASHER
- FOUND 5/8-INCH MONUMENT AS DESCRIBED ABOVE
- ◆ FOUND BRASS CAP MONUMENT AS DESCRIBED ABOVE
- ⊕ CALCULATED POINT
- ⚡ SET 5/8-INCH X 30-INCH LONG IRON PIN WITH RED PLASTIC CAP "BAROTT LS 2332"
- ① REFER TO MONUMENT INFORMATION
- W. C. WITNESS CORNER
C. S. FILED SURVEY JACKSON COUNTY SURVEYOR'S OFFICE
- R&C REBAR & CAP

RECEIVED
DATE 8-31-07 BY [Signature]
THIS SURVEY CONSISTS OF:
1 SHEET(S) MAP
2 PAGE(S) NARRATIVE
JACKSON COUNTY SURVEYOR

PLOTTED ON CONTINENTAL/MILANO JPC-4M2 MYLAR USING HP 51640 CARTRIDGE

STEPHAN BAROTT LAND SURVEYING

REGISTERED PROFESSIONAL LAND SURVEYOR
Stephan Barott
OREGON JULY 26, 1988
STEPHAN L. BAROTT 2332
MY CERTIFICATE EXPIRES DECEMBER 31, 2007

1446 ST. ANDREW WAY
MEDFORD, OREGON 97504

541-776-1272
fax 541-776-2956
sbarott@charter.net

MAP OF SURVEY

DRAWN SLB	DATE 8-26-07	RPM PROPERTIES SCOTT HENSELMAN
APPROVED	DATE	1712 E. MCANDREWS RD MEDFORD, OR 97504
SCALE 1"=40'	SHEET 1 OF 1	PROJECT NO. 2007-15

37-1W-19AD-TL 505