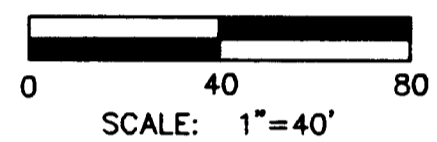
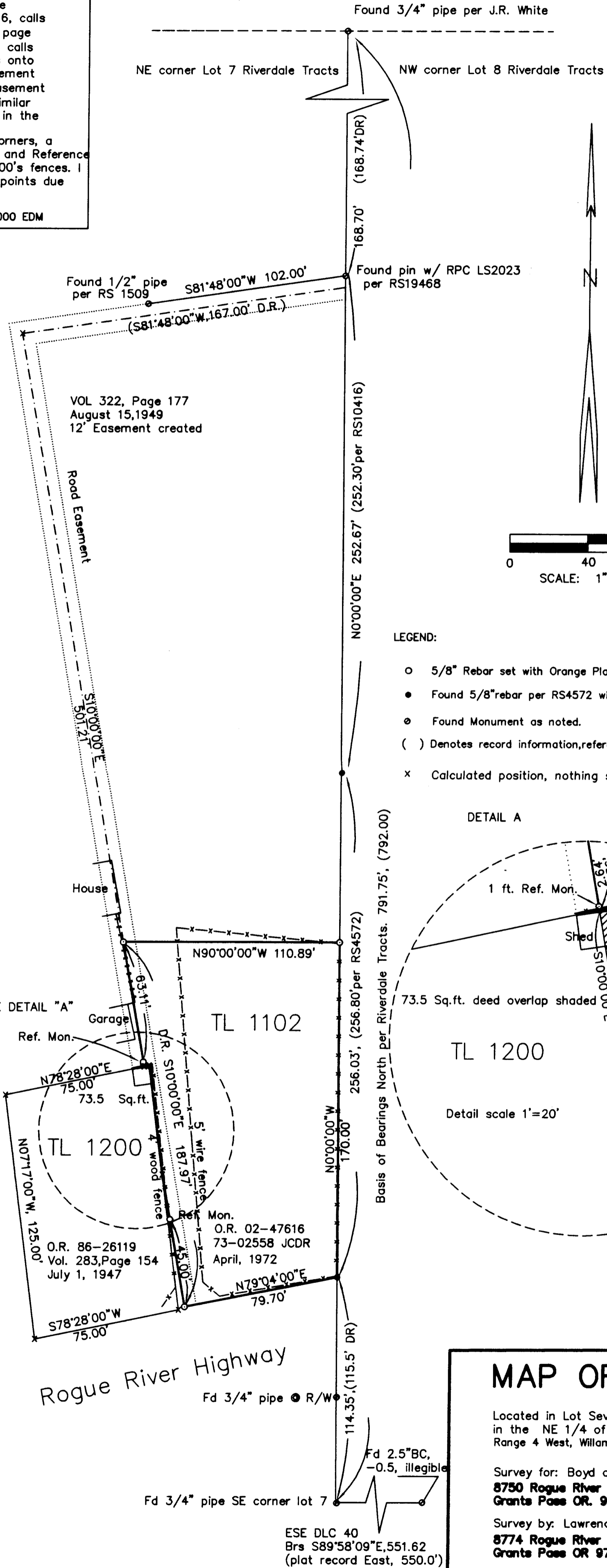


NARRATIVE:

The purpose of this survey is to monument the corners of Tax lot 1102. This deed, 02- 47616, calls the center line of a road easement (Vol. 322, page 177) as the west property line. The easement calls a 12 foot strip for road purposes, and crosses onto Tax Lot 1200, which is not subject to the easement or to 1102's boundary call. This renders the easement only 3.36' wide at the NE corner of 1200. A similar gap exists at the SW corner of 1102, which is in the easement granted by TL1100. Monuments were set at the NW, NE, and SW corners, a pin from RS 4572 was held for the SE corner, and Reference Monuments were set at intersections with TL1200's fences. I could not occupy the exact locations of angle points due to improvements.

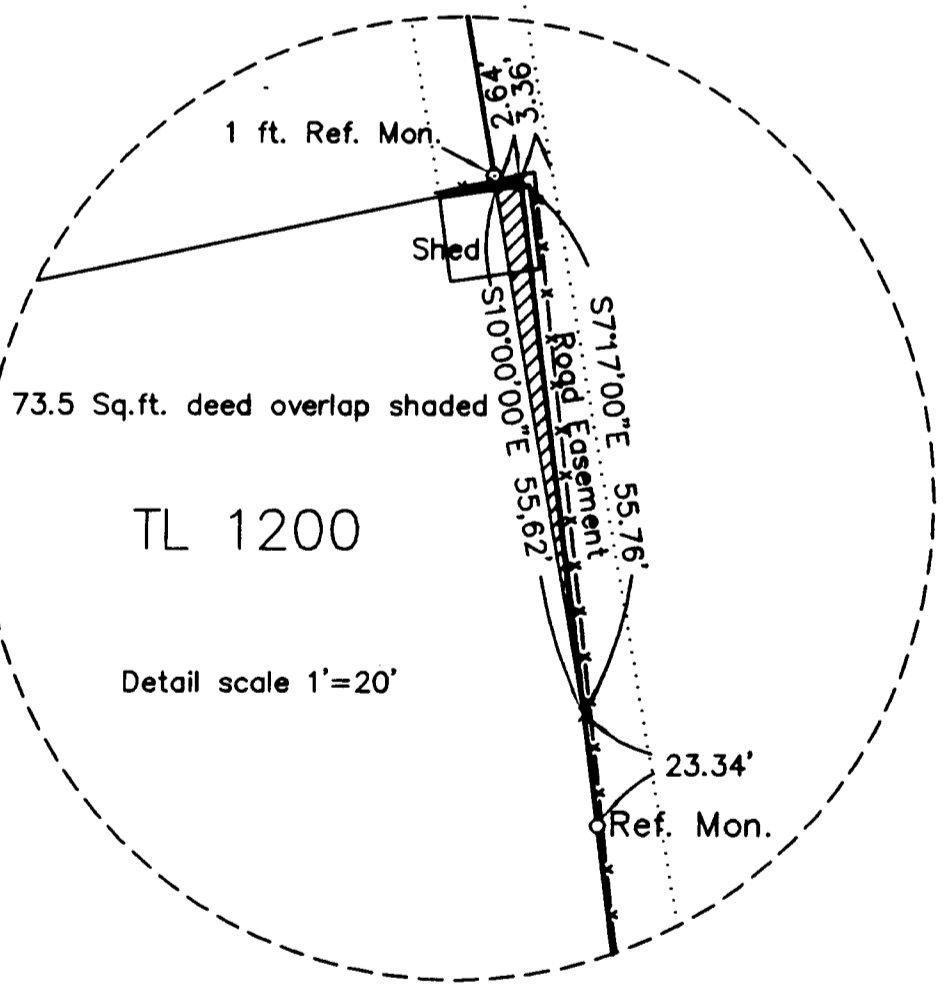
Equipment used was a Wild T16 Theodolite and DI 1000 EDM



LEGEND:

- 5/8" Rebar set with Orange Plastic Cap "Kleypas LS2745"
- Found 5/8" rebar per RS4572 with plastic cap marked "Masters LS457"
- ⊙ Found Monument as noted.
- () Denotes record information, reference noted.
- x Calculated position, nothing set

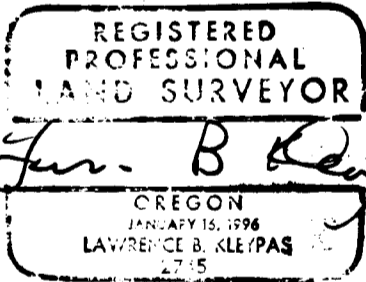
DETAIL A



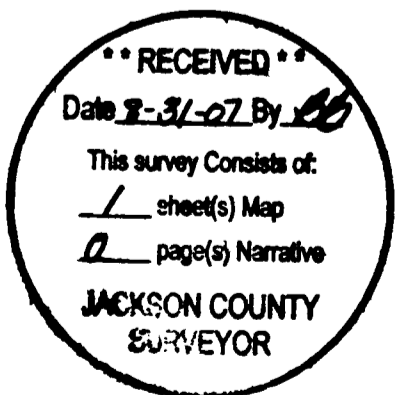
TL 1100

TL 1102

TL 1200



License Expiration Date= 06/30/2009



364W 21AB TL1102

MAP OF SURVEY

Located in Lot Seven of Riverdale Tracts in the NE 1/4 of Section 21, Township 36 South, Range 4 West, Willamette Meridian,

Survey for: Boyd and Jeanne Davis
8750 Rogue River Highway
Grants Pass OR. 97527

Survey by: Lawrence B. Kleypas
8774 Rogue River Highway
Grants Pass OR 97527

July 21, 2007

Basis of Bearings; Riverdale Tracts Subdivision
Recorded Jan. 18, 1915