

CONTROL NARRATIVE

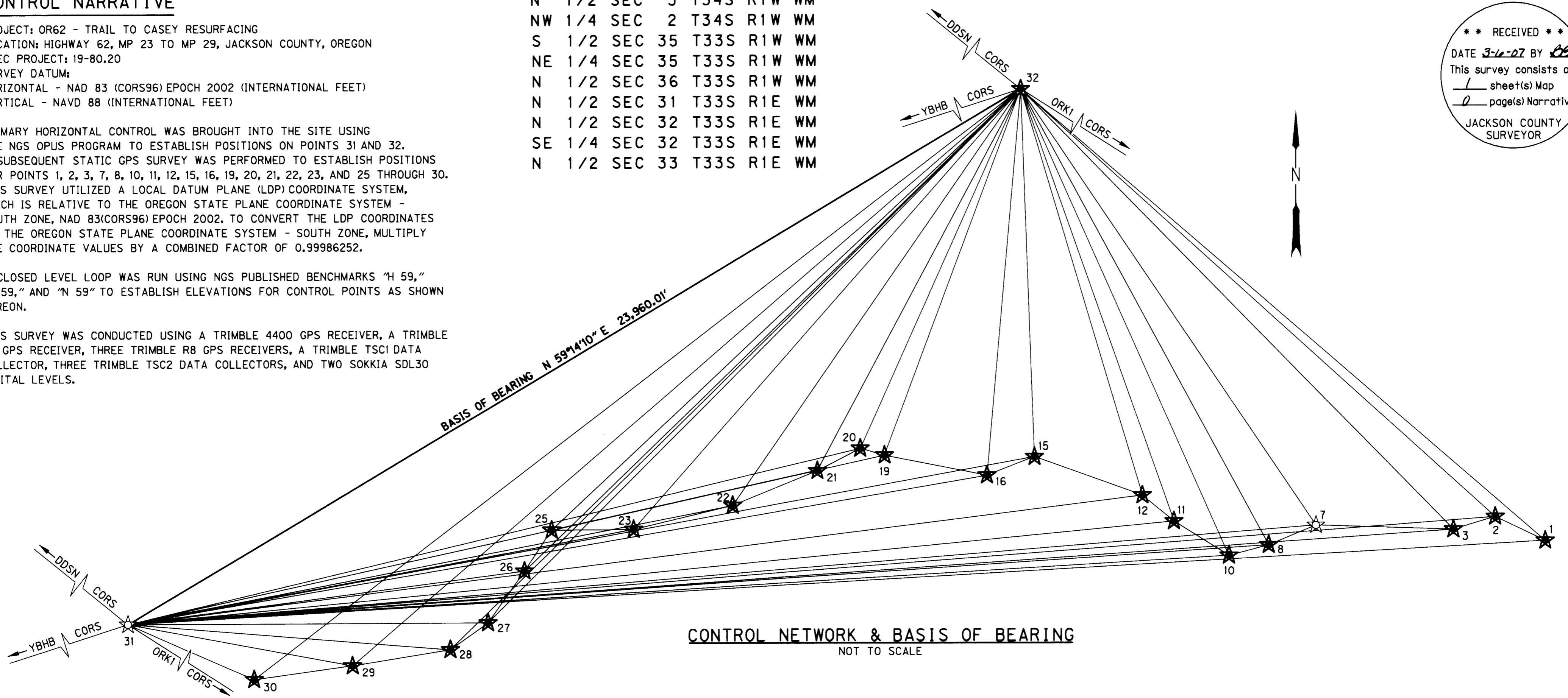
PROJECT: OR62 - TRAIL TO CASEY RESURFACING
 LOCATION: HIGHWAY 62, MP 23 TO MP 29, JACKSON COUNTY, OREGON
 OBEC PROJECT: 19-80.20
 SURVEY DATUM:
 HORIZONTAL - NAD 83 (CORS96) EPOCH 2002 (INTERNATIONAL FEET)
 VERTICAL - NAVD 88 (INTERNATIONAL FEET)

PRIMARY HORIZONTAL CONTROL WAS BROUGHT INTO THE SITE USING THE NGS OPUS PROGRAM TO ESTABLISH POSITIONS ON POINTS 31 AND 32. A SUBSEQUENT STATIC GPS SURVEY WAS PERFORMED TO ESTABLISH POSITIONS FOR POINTS 1, 2, 3, 7, 8, 10, 11, 12, 15, 16, 19, 20, 21, 22, 23, AND 25 THROUGH 30. THIS SURVEY UTILIZED A LOCAL DATUM PLANE (LDP) COORDINATE SYSTEM, WHICH IS RELATIVE TO THE OREGON STATE PLANE COORDINATE SYSTEM - SOUTH ZONE, NAD 83(CORS96) EPOCH 2002. TO CONVERT THE LDP COORDINATES TO THE OREGON STATE PLANE COORDINATE SYSTEM - SOUTH ZONE, MULTIPLY THE COORDINATE VALUES BY A COMBINED FACTOR OF 0.99986252.

A CLOSED LEVEL LOOP WAS RUN USING NGS PUBLISHED BENCHMARKS "H 59," "L 59," AND "N 59" TO ESTABLISH ELEVATIONS FOR CONTROL POINTS AS SHOWN HEREON.

THIS SURVEY WAS CONDUCTED USING A TRIMBLE 4400 GPS RECEIVER, A TRIMBLE R7 GPS RECEIVER, THREE TRIMBLE R8 GPS RECEIVERS, A TRIMBLE TSCI DATA COLLECTOR, THREE TRIMBLE TSC2 DATA COLLECTORS, AND TWO SOKKIA SDL30 DIGITAL LEVELS.

N 1/2 SEC 3 T34S R1W WM
 NW 1/4 SEC 2 T34S R1W WM
 S 1/2 SEC 35 T33S R1W WM
 NE 1/4 SEC 35 T33S R1W WM
 N 1/2 SEC 36 T33S R1W WM
 N 1/2 SEC 31 T33S R1E WM
 N 1/2 SEC 32 T33S R1E WM
 SE 1/4 SEC 32 T33S R1E WM
 N 1/2 SEC 33 T33S R1E WM



RECEIVED
 DATE 3-12-07 BY [Signature]
 This survey consists of:
 1 sheet(s) Map
 0 page(s) Narrative
 JACKSON COUNTY SURVEYOR

NETWORK POINT COORDINATE TABLE

FD = FOUND
 RPC = RED PLASTIC CAP

PT. NO.	LDP NORTHING	LDP EASTING	ELEVATION	DATE	DESCRIPTION
1	369403.80	4331213.65	1547.33'	12-26-2006	SET 5/8" x 30" REBAR W/RPC STAMPED "OBEC CONTROL"
2	369951.73	4330062.92	1547.77'	12-26-2006	SET 5/8" x 30" REBAR W/RPC STAMPED "OBEC CONTROL"
3	369665.39	4329099.40	1558.20'	12-26-2006	SET MAGNAIL
7	369762.93	4325939.25	1530.80'	12-26-2006	FD 3" ALUMINUM CAP STAMPED "CAMERA POINT - USDA"
8	369311.93	4324855.34	1534.49'	12-26-2006	SET MAGNAIL
10	369068.98	4323939.50	1532.59'	12-26-2006	SET 5/8" x 30" REBAR W/RPC STAMPED "OBEC CONTROL"
11	369860.21	4322676.10	1507.27'	12-26-2006	SET 5/8" x 30" REBAR W/RPC STAMPED "OBEC CONTROL"
12	370455.70	4321948.14	1512.75'	12-26-2006	SET 5/8" x 30" REBAR W/RPC STAMPED "OBEC CONTROL"
15	371345.85	4319464.92	1510.22'	12-26-2006	SET 5/8" x 30" REBAR W/RPC STAMPED "OBEC CONTROL"
16	370918.91	4318369.90	1503.27'	12-26-2006	SET 5/8" x 30" REBAR W/RPC STAMPED "OBEC CONTROL"
19	371381.95	4316002.74	1479.07'	12-26-2006	SET MAGNAIL
20	371540.65	4315443.63	1485.88'	12-26-2006	SET 5/8" x 30" REBAR W/RPC STAMPED "OBEC CONTROL"
21	371029.04	4314453.01	1484.00'	12-26-2006	SET MAGNAIL
22	370233.01	4312492.28	1475.35'	12-26-2006	SET MAGNAIL
23	369693.69	4310203.86	1460.87'	12-26-2006	SET 5/8" x 30" REBAR W/RPC STAMPED "OBEC CONTROL"
25	369681.93	4308314.41	1468.14'	12-26-2006	SET 5/8" x 30" REBAR W/RPC STAMPED "OBEC CONTROL"
26	368743.78	4307693.85	1471.45'	12-26-2006	SET 5/8" x 30" REBAR W/RPC STAMPED "OBEC CONTROL"
27	367554.33	4306855.38	1457.51'	12-26-2006	SET 5/8" x 30" REBAR W/RPC STAMPED "OBEC CONTROL"
28	366943.99	4305990.90	1446.24'	12-26-2006	SET 5/8" x 30" REBAR W/RPC STAMPED "OBEC CONTROL"
29	366584.18	4303736.35	1455.32'	12-26-2006	SET MAGNAIL
30	366268.46	4301468.87	1438.36'	12-26-2006	SET 5/8" x 30" REBAR W/RPC STAMPED "OBEC CONTROL"
31	367583.35	4299157.28	N/A	12-26-2006	FD 5/8" IRON ROD W/RPC PER SN 18642
32	379838.97	4319745.68	N/A	12-26-2006	SET 5/8" x 30" REBAR W/RPC STAMPED "OBEC CONTROL"

CONFIDENCE LEVEL LIMITS 1.96 SIGMA (95%)

POINT #	SEMI MAJOR	SEMI MINOR	ORIENTATION*
1	0.03'	0.03'	343°01'32"
2	0.02'	0.02'	350°46'10"
3	0.02'	0.02'	342°56'22"
7	0.02'	0.02'	205°24'49"
8	0.02'	0.02'	225°02'56"
10	0.02'	0.02'	226°15'31"
11	0.02'	0.02'	253°43'52"
12	0.02'	0.02'	238°52'18"
15	0.02'	0.02'	213°57'07"
16	0.02'	0.02'	353°59'21"
19	0.02'	0.02'	337°59'36"
20	0.02'	0.02'	345°20'15"
21	0.02'	0.02'	348°54'26"
22	0.02'	0.02'	346°03'48"
23	0.02'	0.02'	230°52'50"
25	0.02'	0.02'	234°10'27"
26	0.02'	0.02'	230°21'46"
27	0.02'	0.02'	218°58'52"
28	0.02'	0.02'	214°40'08"
29	0.02'	0.02'	202°28'30"
30	0.03'	0.02'	195°54'27"

* NORTH AZIMUTH
 FIXED POINTS NOT SUBJECT TO LEAST SQUARES
 ADJUSTMENT OR CONFIDENCE LEVEL ANALYSIS: 31, 32

LEGEND

- ☆ FOUND GPS STATION
- ★ SET GPS STATION
- *— LINES OF OBSERVATION

ENGLISH

REGISTERED PROFESSIONAL LAND SURVEYOR

ARON J. CUTSFORTH
 JULY 12, 2005
 6596

RENEWAL DATE: DEC. 31, 2007
 SIGNED: *[Signature]* **MARCH 9, 2007**

Corporate Office: 920 COUNTRY CLUB ROAD, SUITE 100B EUGENE, OREGON 97401-6089
 2235 MISSION STREET SE, SUITE 100 SALEM, OREGON 97302-1285
 1335 POPLAR DRIVE MEDFORD, OREGON 97504-5207
 5005 SW MEADOWS ROAD, SUITE 120 LAKE OSWEGO, OREGON 97035

CONTROL SURVEY
OR 62: TRAIL TO CASEY RESURFACING
 FOR OREGON DEPARTMENT OF TRANSPORTATION
 WHITE CITY, OR
 FEBRUARY 2007

ODOT KEY NO. 13771
 JACKSON COUNTY, OREGON

DESIGNED: A. CUTSFORTH
 PROJ. NO. 19-80.20
 SHT. 1 OF 1

DRAWN: R. BEAUSOLEIL
 CHK'D: JOHN PARIANI
 FILE NO. 17951S

NO SCALE

JOHN PARIANI OBEC
 APPROVED BY: GROUP MANAGER-TITLE