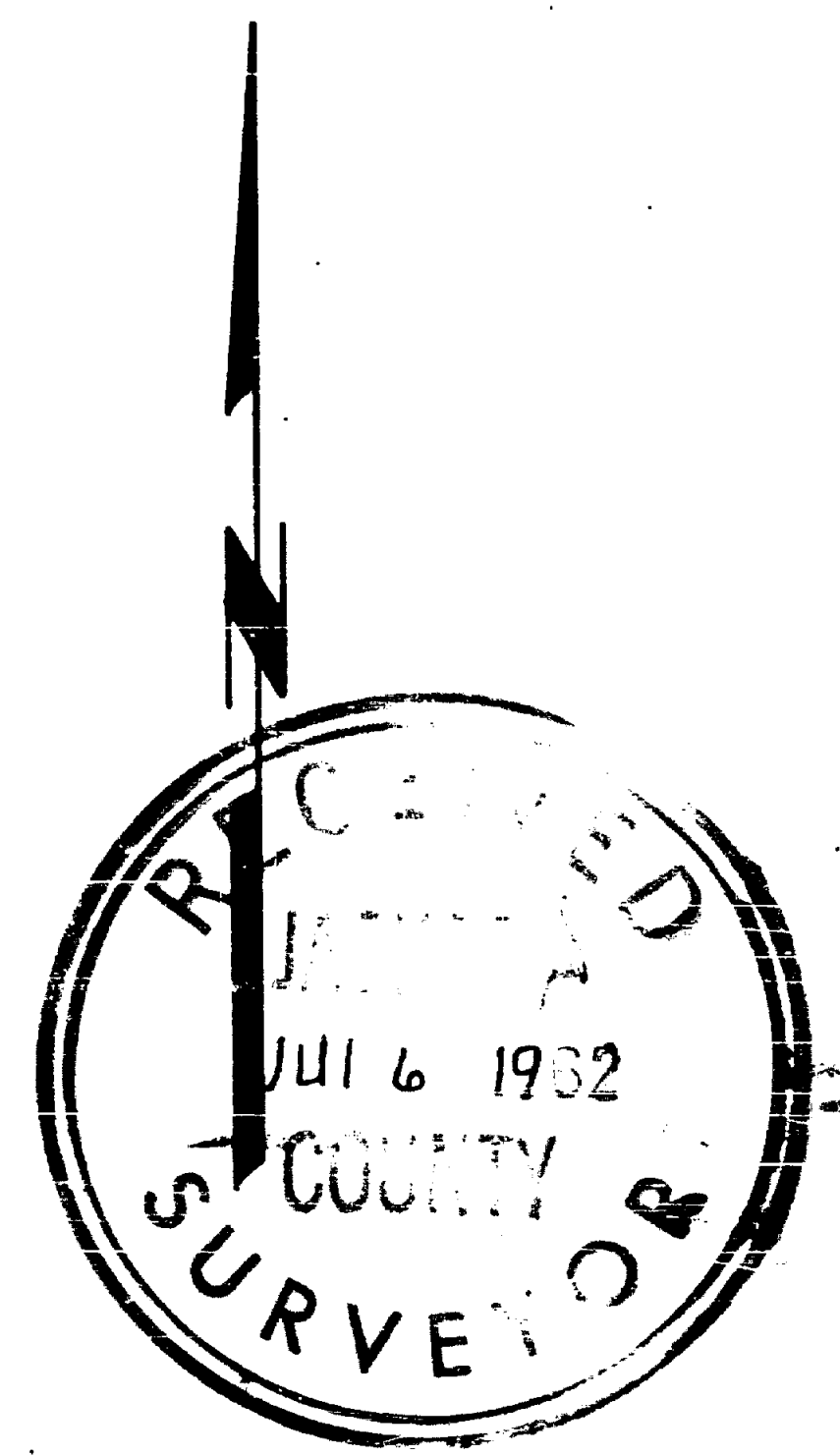
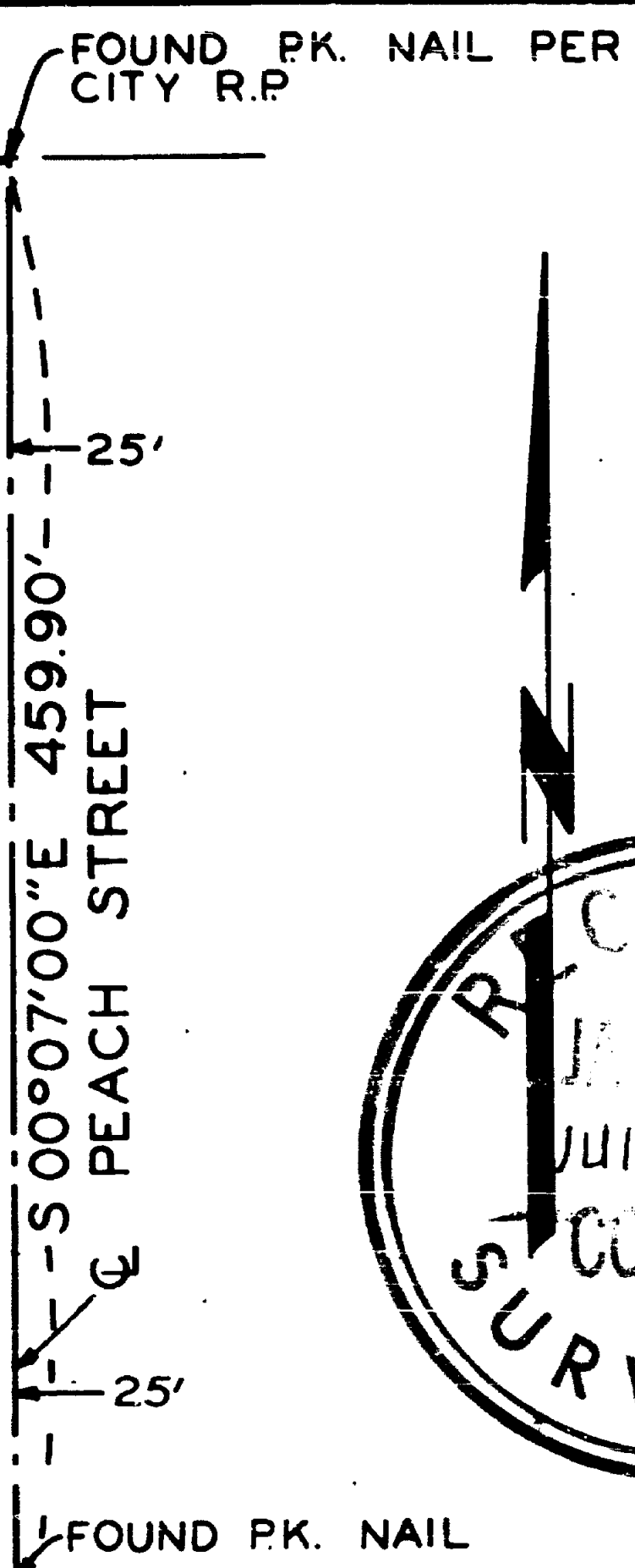
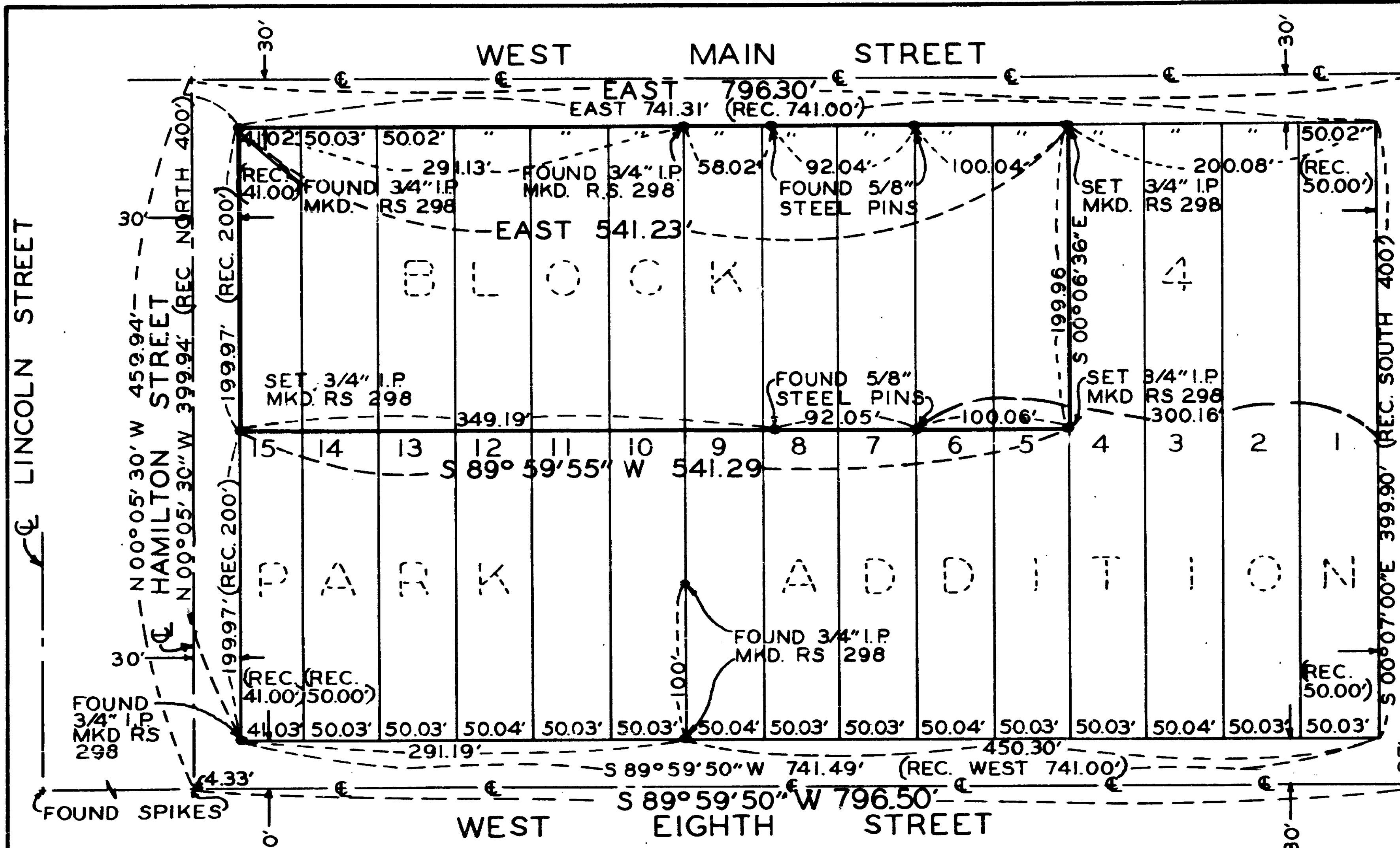


1951



NOTE:

DUE TO LACK OF STREET MONUMENTS
& ANY RECORDS ON HAMILTON STREET,
THE CURB LINES WERE USED AS A
BASIS FOR ARRIVING AT CENTERLINE.

REGISTERED
OREGON
LAND SURVEYOR

Fredrick E. Warner

NOV. 7, 1952
FREDRICK E. WARNER
298

BOUNDARY SURVEY
SITUATED IN
BLOCK 4.
PARK ADDITION, MEDFORD,
JACKSON COUNTY, OREGON
FOR
SAFeway STORES, INCORPORATED
1139 S.E. THIRD AVENUE
PORTLAND 14, OREGON
SCALE: 1" = 100' MAY 26, 1962

1951

NO. 1862

1951

FIELD NOTES
of
BOUNDARY SURVEY
of

1951

The North Half of Lots 5,6,7,8,9,10,11,12,13,14,and 15, Block 4,
Park Addition, Medford, Oregon for Safeway Stores Incorporated.

16-67301-1

Beginning at the Northwest Corner of Lot 15, Block 4, Park Addition to the City of Medford, Oregon, I find a 3/4 inch iron pipe driven even with ground surface and marked RS 298, firmly set and undisturbed. This corner was established by myself on a prior survey so I accept as the true Northwest Corner of Lot 15

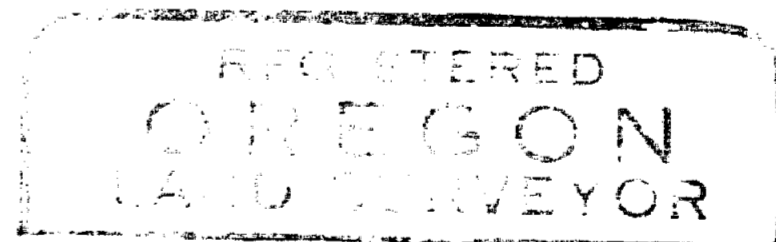
Thence South 00°05'30"East along the West line of Lot 15 and the East line of Hamilton Street as established by L.P. Lovejoy on survey dated August 29, 1960 a distance of 199.97 feet. I set a 3/4 inch iron pipe driven even with ground surface and marked RS 298 for the Southwest Corner of the North Half of Lot 15

I then find a 5/8 inch iron pin at the Northeast Corner of Lot 7 established by L. P. Lovejoy on survey dated August 29, 1960, this corner being firmly set and undisturbed I accept as the true corner

Thence East on record bearing a distance of 100.04 feet I set a 3/4 inch iron pipe even with ground surface and marked RS 298 for the Northeast Corner of Lot 5

Thence South 00°06'36"East along the East line of Lot 5 a distance of 199.96 feet I set a 3/4 inch iron pipe even with ground surface and marked RS 298 for the Southeast Corner of the North Half of Lot 5. A 5/8 inch iron pin established by L.P. Lovejoy on survey dated August 29, 1960 bears South 89°59'55" West a distance of 100.06 feet

This survey was performed at the request of Safeway Stores Incorporated, Portland, Oregon by Fredrick E. Warner and Ronald W. Cogswell in May, 1962. Basis for this survey was a recorded survey by L.P. Lovejoy for George Fuchs dated August 29, 1960 and recorded survey by Fredrick E. Warner for Safeway Stores Incorporated dated December 6, 1961. This survey was performed with a Keuffel and Esser Transit and 200 foot steel tape which was compared to a Lufkin Standard and found to be correct. Survey completed May 26, 1962.



Fredrick E. Warner

