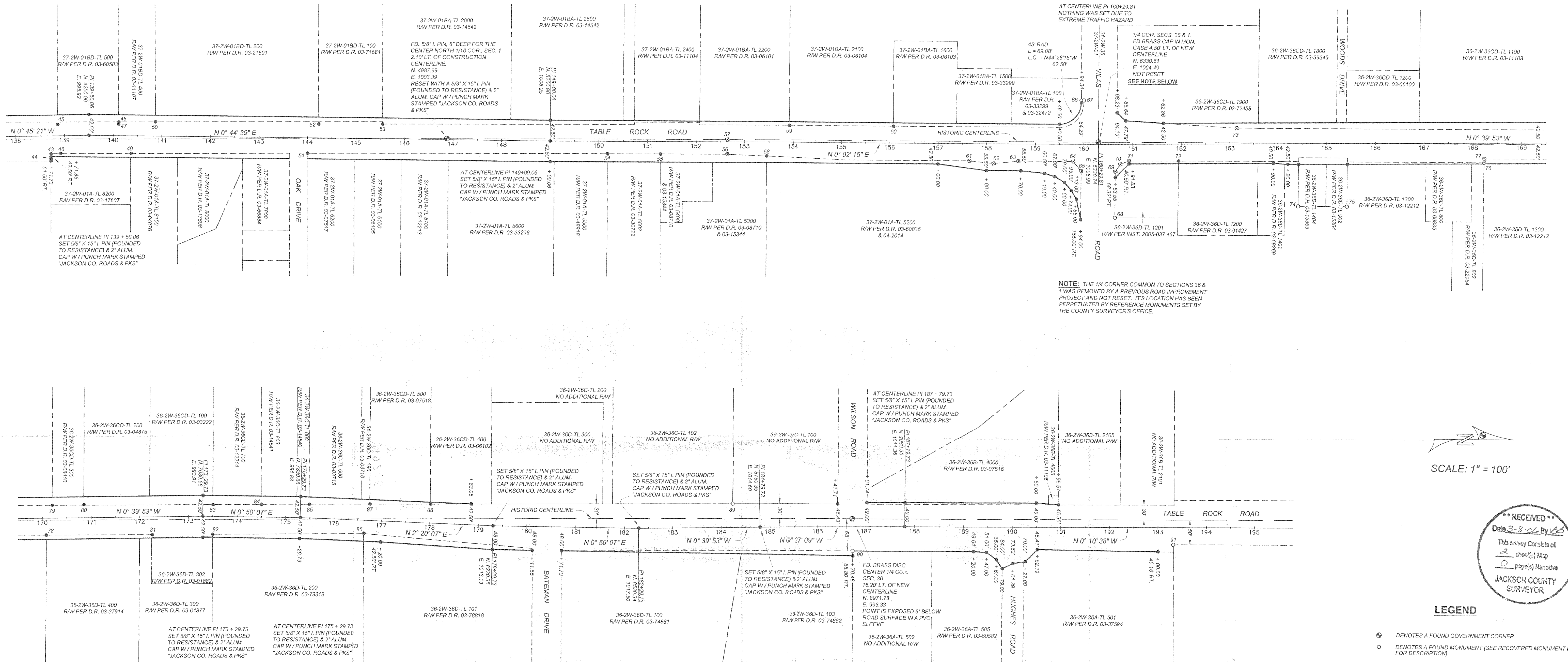


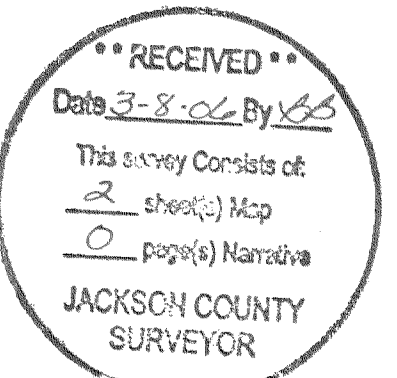
TABLE ROCK ROAD (HAMRICK ROAD TO HUGHES ROAD) REALIGNMENT, WIDENING AND PAVING



NOTE: THE 1/4 CORNER COMMON TO SECTIONS 36 & T WAS REMOVED BY A PREVIOUS ROAD IMPROVEMENT PROJECT AND NOT RESET. ITS LOCATION HAS BEEN PERPETUATED BY REFERENCE MONUMENTS SET BY THE COUNTY SURVEYOR'S OFFICE.



SCALE: 1" = 100'



LEGEND

- DENOTES A FOUND GOVERNMENT CORNER
- DENOTES A FOUND MONUMENT (SEE RECOVERED MONUMENT LIST FOR DESCRIPTION)
- ⊙ DENOTES A FOUND MONUMENT WHICH WAS NOT RESET
- DENOTES A SET MONUMENT CONSISTING OF A 5/8" BY 24" IRON PIN AND YELLOW PLASTIC CAP STAMPED "JACKSON CO. ROADS & PKS" OR AS OTHERWISE NOTED. BRASS PLUGS SET ARE STAMPED "JA CO"
- DENOTES THE CONSTRUCTION CENTERLINE AND STATIONING (ALSO USED TO DESCRIBE NEW RIGHT OF WAY ACQUISITIONS)
- DENOTES THE HISTORIC RIGHT OF WAY CENTERLINE
- DENOTES THE NEW RIGHT OF WAY LINE WHERE ADDITIONAL PROPERTY WAS ACQUIRED
- DENOTES THE PREVIOUS RIGHT OF WAY LINE PRIOR TO ADDITIONAL ACQUISITIONS
- DENOTES THE EXISTENT RIGHT OF WAY LINE WHERE NO ADDITIONAL ACQUISITIONS WERE NECESSARY
- D.R. DEED RECORD
- PI POINT OF INTERSECTION (ANGLE POINT)

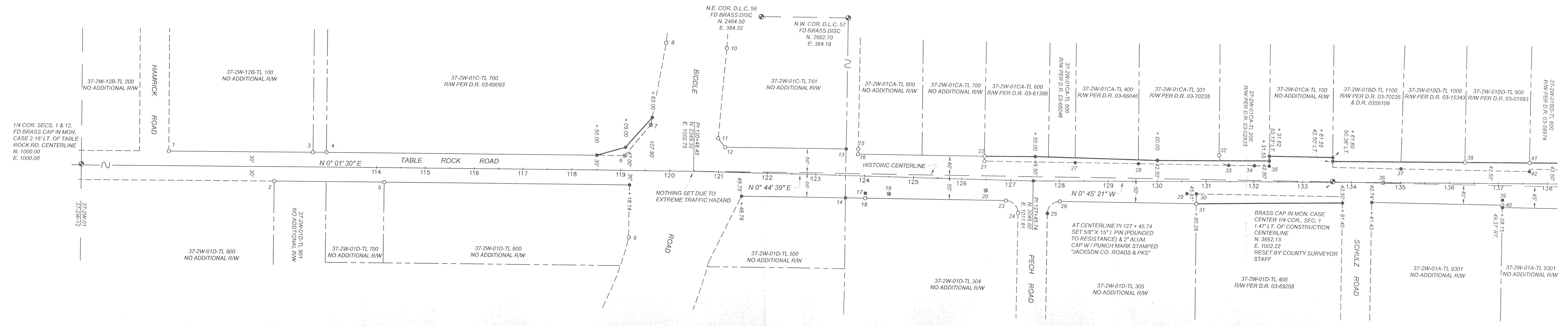
RECOVERED MONUMENT LIST

- | | | |
|--|--|---|
| <p>43. PIN AND PLASTIC CAP STAMPED "D. MCMAHAN LS 1913", UNRECORDED SURVEY. N. 4173.25, E. 1033.75, RESET WITH A 3/4" BRASS PLUG IN CONC. SW</p> <p>44. PIN AND PLASTIC CAP STAMPED "D. MCMAHAN LS 1913", UNRECORDED SURVEY. N. 4173.26, E. 1043.58, RESET WITH PIN & CAP</p> <p>45. PIN AND PLASTIC CAP STAMPED "WEAVER LS 1679", S.N. 11444. N. 4197.12, E. 973.52, RESET WITH PIN & CAP</p> <p>46. 5/8" IRON PIN, S.N. 7504. N. 4193.25, E. 1032.93, RESET WITH A 3/4" BRASS PLUG IN CONC. SW</p> <p>47. PIN AND PLASTIC CAP STAMPED "WEAVER LS 1679", S.N. 11444. N. 4312.14, E. 973.58, RESET WITH PIN & CAP</p> <p>48. PIN AND PLASTIC CAP STAMPED "C. NEATHAMER LS 56545", S.N. 17376. N. 4312.09, E. 968.62, RESET WITH PIN & CAP</p> <p>49. 5/8" IRON PIN, S.N. 7504. N. 4337.66, E. 1033.53, RESET WITH PIN & CAP</p> <p>50. PIN AND PLASTIC CAP STAMPED "C. NEATHAMER LS 56545", S.N. 17376. N. 4388.09, E. 968.62, RESET WITH PIN & CAP</p> <p>51. 3/4" IRON PIN, S.N. 10681. N. 4700.41, E. 1033.59, RESET WITH PIN & CAP</p> <p>52. PIN AND PLASTIC CAP STAMPED "D. MCMAHAN LS 1913", S.N. 18106. N. 4723.87, E. 973.69, RESET WITH PIN & CAP</p> <p>53. PIN AND PLASTIC CAP STAMPED "D. MCMAHAN LS 1913", S.N. 18106. N. 4855.87, E. 973.89, RESET WITH PIN & CAP</p> <p>54. 5/8" IRON PIN, S.N. 8613. N. 5318.63, E. 1034.19, RESET WITH PIN & CAP</p> <p>55. 5/8" IRON PIN, S.N. 8613. N. 5427.72, E. 1034.35, RESET WITH PIN & CAP</p> <p>56. PIN AND ALUM. CAP, UNRECORDED O.D.O.T. SURVEY. N. 5565.56, E. 1033.93</p> <p>57. 2 3/4" BRASS CAP, UNRECORDED O.D.O.T. SURVEY (STA. 43+00). N. 5565.60, E. 1003.93</p> | <p>58. PIN AND PLASTIC CAP STAMPED "L.J. FRIAR AND ASSOC.", S.N. 14478. N. 5645.99, E. 1037.46, RESET WITH PIN & CAP</p> <p>59. PIN AND PLASTIC CAP STAMPED "R. ROBERTS L.S. 1656", S.N. 11665. N. 5692.88, E. 974.23, RESET WITH A 3/4" BRASS PLUG IN CONC. SW</p> <p>60. 5/8" IRON PIN, S.N. 6864. N. 5908.63, E. 974.42, RESET WITH A 3/4" BRASS PLUG IN CONC. SW</p> <p>61. PIN AND ALUM. CAP, UNRECORDED O.D.O.T. SURVEY. N. 6065.53, E. 1044.30</p> <p>62. PIN AND ALUM. CAP, UNRECORDED O.D.O.T. SURVEY. N. 6115.49, E. 1049.33</p> <p>63. PIN AND ALUM. CAP, UNRECORDED O.D.O.T. SURVEY. N. 6165.54, E. 1044.32</p> <p>64. PIN AND ALUM. CAP, UNRECORDED O.D.O.T. SURVEY. N. 6278.93, E. 1044.47</p> <p>65. PIN AND ALUM. CAP, UNRECORDED O.D.O.T. SURVEY. N. 6295.31, E. 1064.32</p> <p>66. PIN AND ALUM. CAP, UNRECORDED O.D.O.T. SURVEY. N. 6295.36, E. 919.59</p> <p>67. PIN AND ALUM. CAP, UNRECORDED O.D.O.T. SURVEY. N. 6300.32, E. 919.59</p> <p>68. BRASS TAG STAMPED "LS 2234" IN LEAD PLUG IN CONCRETE WALL, S.N. 15328. N. 6364.82, E. 1159.41</p> <p>69. PIN AND ALUM. CAP, UNRECORDED O.D.O.T. SURVEY. N. 6365.30, E. 1064.71</p> <p>70. PIN AND ALUM. CAP, UNRECORDED O.D.O.T. SURVEY. N. 6375.40, E. 1049.77</p> <p>71. PIN AND ALUM. CAP, UNRECORDED O.D.O.T. SURVEY. N. 6393.12, E. 1042.31</p> <p>72. BRASS TAG STAMPED "LS 2234" IN LEAD PLUG IN CONCRETE WALL, S.N. 15328. N. 6495.41, E. 1041.95, RESET WITH PIN & CAP</p> <p>73. PIN AND ALUM. CAP, UNRECORDED O.D.O.T. SURVEY. N. 6615.39, E. 973.61</p> <p>74. 5/8" IRON PIN, S.N. 7895. N. 6743.01, E. 1133.30</p> | <p>75. 5/8" IRON PIN, S.N. 7895. N. 6843.10, E. 1132.96</p> <p>76. PIN AND ALUM. CAP, UNRECORDED O.D.O.T. SURVEY. N. 7124.45, E. 1040.00</p> <p>77. PIN AND ALUM. CAP, UNRECORDED O.D.O.T. SURVEY. N. 7124.44, E. 1032.00</p> <p>78. 5/8" IRON PIN, S.N. 3107. N. 7308.96, E. 1031.45, RESET WITH A 3/4" BRASS PLUG IN CONC. SW</p> <p>79. 5/8" IRON PIN, S.N. 2459. N. 7321.13, E. 971.33, RESET WITH PIN & CAP</p> <p>80. 5/8" IRON PIN, S.N. 2459. N. 7385.72, E. 970.21, RESET WITH PIN & CAP</p> <p>81. 5/8" IRON PIN, UNKNOWN ORIGIN. N. 7526.12, E. 1030.78, RESET WITH 3/4" BRASS PLUG IN CONC. SW</p> <p>82. PIN AND PLASTIC CAP STAMPED "D. MCMAHAN LS 1913", UNRECORDED SURVEY. N. 7651.13, E. 1030.37, RESET WITH A 3/4" BRASS PLUG IN CONC. SW</p> <p>83. 5/8" IRON PIN, S.N. 1915. N. 7651.36, E. 970.47, RESET WITH PIN & CAP</p> <p>84. 5/8" IRON PIN, S.N. 1915. N. 7750.29, E. 970.09, RESET WITH PIN & CAP</p> <p>85. 5/8" IRON PIN, S.N. 1915. N. 7849.39, E. 969.75, RESET WITH PIN & CAP</p> <p>86. 3/4" IRON PIPE, S.N. 3228. N. 7964.45, E. 1028.90, RESET WITH PIN & CAP</p> <p>87. PIN AND PLASTIC CAP STAMPED "KAISER RLS 803", S.N. 14257. N. 7977.28, E. 969.43, RESET WITH A 3/4" BRASS PLUG IN CONC. SW</p> <p>88. PIN AND PLASTIC CAP STAMPED "KAISER RLS 803", S.N. 14257. N. 8102.29, E. 969.05, RESET WITH PIN & CAP</p> <p>89. 5/8" IRON PIN, S.N. 8210. N. 8724.22, E. 967.07</p> <p>90. PIN AND PLASTIC CAP STAMPED "L.S. 505", S.N. 9673. N. 8971.75, E. 1061.34</p> <p>91. 5/8" IRON PIN, S.N. 7270. N. 9632.37, E. 1044.34</p> |
|--|--|---|

JACKSON COUNTY ROADS AND PARKS SERVICES
200 ANTELOPE ROAD
WHITE CITY, OREGON 97503

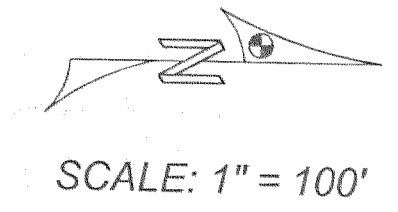
REGISTERED PROFESSIONAL LAND SURVEYOR
James P. Dickerson
OREGON
JANUARY 17, 1993
JAMES P. DICKERSON
2591
EXP. 12-31-07

TABLE ROCK ROAD (HAMRICK ROAD TO HUGHES ROAD) REALIGNMENT, WIDENING AND PAVING



LEGEND

- DENOTES A FOUND GOVERNMENT CORNER
- DENOTES A FOUND MONUMENT (SEE RECOVERED MONUMENT LIST FOR DESCRIPTION)
- ⊙ DENOTES A FOUND MONUMENT WHICH WAS NOT RESET
- DENOTES A SET MONUMENT CONSISTING OF A 5/8" BY 24" IRON PIN AND YELLOW PLASTIC CAP STAMPED "JACKSON CO. ROADS & PK" OR AS OTHERWISE NOTED. BRASS PLUGS SET ARE STAMPED "JA CO"
- +— DENOTES THE CONSTRUCTION CENTERLINE AND STATIONING (ALSO USED TO DESCRIBE NEW RIGHT OF WAY ACQUISITIONS)
- +— DENOTES THE HISTORIC RIGHT OF WAY CENTERLINE
- +— DENOTES THE NEW RIGHT OF WAY LINE WHERE ADDITIONAL PROPERTY WAS ACQUIRED
- +— DENOTES THE PREVIOUS RIGHT OF WAY LINE PRIOR TO ADDITIONAL ACQUISITIONS
- +— DENOTES THE EXISTENT RIGHT OF WAY LINE WHERE NO ADDITIONAL ACQUISITIONS WERE NECESSARY
- D.R. DEED RECORD
- PI POINT OF INTERSECTION (ANGLE POINT)



SCALE: 1" = 100'

SURVEY NARRATIVE TO COMPLY WITH O.R.S. 209.250

SURVEY FOR: JACKSON COUNTY ROADS AND PARKS SERVICES

LOCATION: T. 37 S., R. 2 W., SECTION 1 AND T. 36 S., R. 2 W., SECTION 36, W.M., JACKSON COUNTY, OREGON

PURPOSE OF SURVEY: TO DEFINE AND MONUMENT A NEW CONSTRUCTION CENTERLINE AND NEWLY ACQUIRED RIGHT OF WAY ALONG A PORTION OF TABLE ROCK ROAD AND TO SHOW RECORD MONUMENTS RECOVERED PRIOR TO AND DURING CONSTRUCTION.

PROCEDURE: A CLOSED TRAVERSE WAS RUN WHICH TIED IN FOUND MONUMENTS AND GOVERNMENT CORNERS. THE OFFICE OF THE COUNTY SURVEYOR THEN FURNISHED THIS OFFICE WITH STATE PLANE COORDINATES BASED ON THE OREGON COORDINATE SYSTEM OF 1983 (1991 ADJUSTMENT), SOUTH ZONE, BY WAY OF GPS SURVEYING ON SEVERAL POINTS. AT THE COMPLETION OF THE CONSTRUCTION PROJECT NEWLY ACQUIRED RIGHT OF WAY AND THE CONSTRUCTION CENTERLINE WERE THEN MONUMENTED. REMOVED OR DISTURBED RECORD MONUMENTS WERE RESET IN THEIR FOUND POSITIONS WITH THE EXCEPTION OF THOSE AS SHOWN ON THIS MAP. RECORD MONUMENTS WHICH WERE NOT RESET CONSISTED OF THOSE SET BY RECORDED SURVEY NO. 7434 AND AN UNRECORDED OREGON DEPT. OF TRANS. SURVEY, BOTH OF WHICH DEFINED THE CENTERLINE AND RIGHT OF WAY AT THE TIME THE SURVEYS WERE PERFORMED. TO AVOID CONFUSION AND IN LIGHT OF THE FACT THAT BOTH THE CENTERLINE AND RIGHT OF WAY HAVE NOW BEEN REDEFINED I FELT IT BEST TO NOT RESET THESE MONUMENTS. IN THOSE AREAS WHERE NO ADDITIONAL RIGHT OF WAY WAS ACQUIRED, THE EXISTENT RIGHT OF WAY HAS BEEN PERPETUATED BY EITHER UNDISTURBED MONUMENTS OR BY NEW MONUMENTATION.

THE SURVEY SHOWN ON THIS MAP REPRESENTS ASSUMED COORDINATES SET ON LOCAL DATUM AND ROTATED THE PROJECT CONVERGENCE ANGLE (SEE BELOW FOR ADJUSTMENT AND ROTATION FACTORS). IT SHOULD BE NOTED THAT THE LEGAL DESCRIPTION OF THE NEW CENTERLINE AND RIGHT OF WAY IS BASED ON UNADJUSTED STATE PLANE COORDINATES.

BASIS OF BEARINGS: THE CENTERLINE OF THE SOUTH 1/2 OF SECTION 36, T36S, R2W. STATE PLANE COORDINATES WERE SCALED TO LOCAL DATUM, ROTATED THE ANGLE OF CONVERGENCE AND THEN SET TO ASSUMED COORDINATES. THE BASE POINT OF THE ASSUMED COORDINATES IS THE 1/4 CORNER COMMON TO SECTION 1 AND SECTION 12, T37S, R2W, SAID POINT BEING N. 1000.00 AND E. 1000.00.

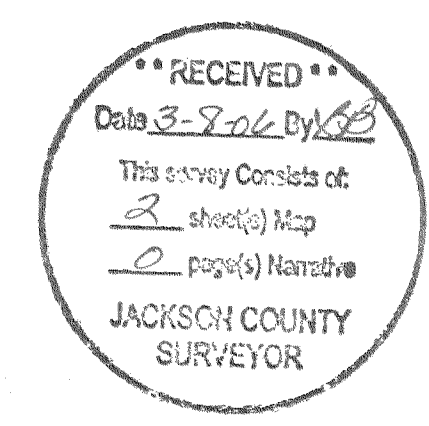
THE SCALE FACTOR USED TO CONVERT FROM STATE PLANE COORDINATES TO LOCAL DATUM IS 1.00007531567

PROJECT ANGLE OF CONVERGENCE (ROTATION) = - 1° 37' 59"

DATE: JUNE 26, 2006

RECOVERED MONUMENT LIST

1. 5/8" IRON PIN (CAP MISSING), S.N. 16429. BENT NORTHERLY 0.2°, 0.19' EAST OF RW LINE. N. 1273.79, E. 972.47
2. PIN AND ALUM. CAP STAMPED "BOYDEN PLS 281", S.N. 16384. 0.23' EAST OF RW LINE. N. 1490.03, E. 1032.60
3. PIN AND PLASTIC CAP STAMPED "HARVEY ENG. & ASSOC.", S.N. 16429. 0.27' EAST OF RW LINE. N. 1568.97, E. 972.68
4. PIN AND PLASTIC CAP STAMPED "HARVEY ENG. & ASSOC.", S.N. 16429. 0.06' EAST OF RW LINE. N. 1596.74, E. 972.48
5. 5/8" IRON PIN, S.N. 664. 0.14' EAST OF RW LINE. N. 1716.84, E. 1032.61
6. 5/8" IRON PIN, S.N. 7434. N. 2208.48, E. 972.77
7. 5/8" IRON PIN, S.N. 7434. N. 2261.02, E. 909.56
8. 5/8" IRON PIN, S.N. 7434. N. 2290.46, E. 742.56
9. 5/8" IRON PIN, S.N. 7434. N. 2219.41, E. 1139.42
10. 5/8" IRON PIN, S.N. 7434. N. 2415.06, E. 751.63
11. 5/8" IRON PIN, S.N. 7434. N. 2399.30, E. 934.88
12. 5/8" IRON PIN, S.N. 7434. 0.08' EAST OF RW LINE. N. 2414.09, E. 952.86
13. R.R. SPIKE STAMPED "LS + 1071", S.N. 17877. N. 2662.69, E. 952.86. RESET WITH PIN & CAP
14. 3" BRASS CAP STAMPED "EDWARDS LS 2339", S.N. 13641. 0.14' EAST OF RW LINE. N. 2662.75, E. 1053.02. RESET WITH A 5/8" X 30" IRON PIN & 2" ALUM. CAP W/ PUNCH MARK STAMPED, "JACKSON CO. ROADS & PK"
15. 5/8" IRON PIN, S.N. 7434. N. 2687.74, E. 952.92
16. 5/8" IRON PIN, S.N. 7434. 0.14' EAST OF RW LINE. N. 2687.31, E. 963.04
17. TACK WITH BRASS WASHER IN LEAD PLUG STAMPED "LS 2339", S.N. 13069. N. 2702.64, E. 1042.94. RESET WITH A 3/4" BRASS PLUG IN CONC. SIDEWALK
18. PIN AND PLASTIC CAP STAMPED "D.A. EDWARDS LS 2339", S.N. 13641. 0.12' EAST OF RW LINE. N. 2702.69, E. 1053.02
19. 5/8" IRON PIN, S.N. 7434. N. 2750.52, E. 1043.06
20. 5/8" IRON PIN, S.N. 7434. N. 2950.51, E. 1033.06
21. 5/8" IRON PIN, S.N. 7434. N. 2946.93, E. 973.13
22. 5/8" IRON PIN, S.N. 7434. 0.13' EAST OF RW LINE. N. 2946.86, E. 963.14
23. PIN AND PLASTIC CAP STAMPED "D.A. EDWARDS LS 2339", S.N. 13641. 0.08' EAST OF RW LINE. N. 2997.51, E. 1053.11
24. PIN AND PLASTIC CAP STAMPED "D.A. EDWARDS LS 2339", S.N. 13641. N. 3016.56, E. 1078.07
25. PIN AND PLASTIC CAP STAMPED "D.A. EDWARDS LS 2339", S.N. 13641. N. 3076.57, E. 1078.14. RESET WITH PIN & CAP
26. PIN AND PLASTIC CAP STAMPED "D.A. EDWARDS LS 2339", S.N. 13641. N. 3101.52, E. 1053.10
27. 5/8" IRON PIN, S.N. 3237. N. 3131.70, E. 973.21. RESET WITH PIN & CAP
28. 5/8" IRON PIN, S.N. 3237. N. 3261.70, E. 973.23. RESET WITH A 3/4" BRASS PLUG IN CONC. SW
29. PIN AND PLASTIC CAP STAMPED "D.A. EDWARDS LS 2339", S.N. 13069. N. 3362.37, E. 1033.20. RESET WITH PIN & CAP
30. PIN AND PLASTIC CAP STAMPED "D.A. EDWARDS LS 2339", S.N. 13315. N. 3381.62, E. 1033.21. RESET WITH PIN & CAP
31. PIN AND PLASTIC CAP STAMPED "D.A. EDWARDS LS 2339", S.N. 13641. N. 3381.75, E. 1053.25
32. PIN AND PLASTIC CAP STAMPED "D. MCMAHAN L.S. 1913", S.N. 10908. N. 3426.76, E. 953.40
33. PIN AND PLASTIC CAP STAMPED "D. MCMAHAN L.S. 1913", S.N. 10908. N. 3446.77, E. 973.24. RESET WITH A 3/4" BRASS PLUG IN CONC. SW
34. 5/8" IRON PIN S.N. 3237. N. 3501.59, E. 973.30. RESET WITH A 3/4" BRASS PLUG IN CONC. SW
35. PIN AND PLASTIC CAP STAMPED "D. MCMAHAN L.S. 1913", S.N. 10908. N. 3531.95, E. 973.35. RESET WITH A 3/4" BRASS PLUG IN CONC. SW
36. 2 3/4" BRASS CAP, UNRECORDED O.D.O.T. SURVEY (STA. 25+60). N. 3765.65, E. 1002.43
37. 5/8" IRON PIN (CAP MISSING), S.N. 9594. N. 3901.30, E. 973.47. RESET WITH PIN & CAP
38. PIN AND PLASTIC CAP STAMPED "KAISER RLS 803", S.N. 17832. 0.05' WEST OF RW LINE. N. 3931.88, E. 957.57
39. PIN AND PLASTIC CAP STAMPED "D. MCMAHAN LS 1913", UNRECORDED SURVEY. N. 4009.64, E. 1033.45. RESET WITH A 3/4" BRASS PLUG IN CONC. SW
40. PIN AND PLASTIC CAP STAMPED "D. MCMAHAN LS 1913", UNRECORDED SURVEY. N. 4009.66, E. 1043.51
41. PIN AND PLASTIC CAP STAMPED "KAISER RLS 803", S.N. 17832. N. 4063.80, E. 955.68
42. PIN AND PLASTIC CAP STAMPED "WEAVER LS 1679", S.N. 10291. N. 4063.91, E. 973.63. RESET WITH PIN & CAP



JACKSON COUNTY ROADS AND PARKS SERVICES
200 ANTELOPE ROAD
WHITE CITY, OREGON 97503

