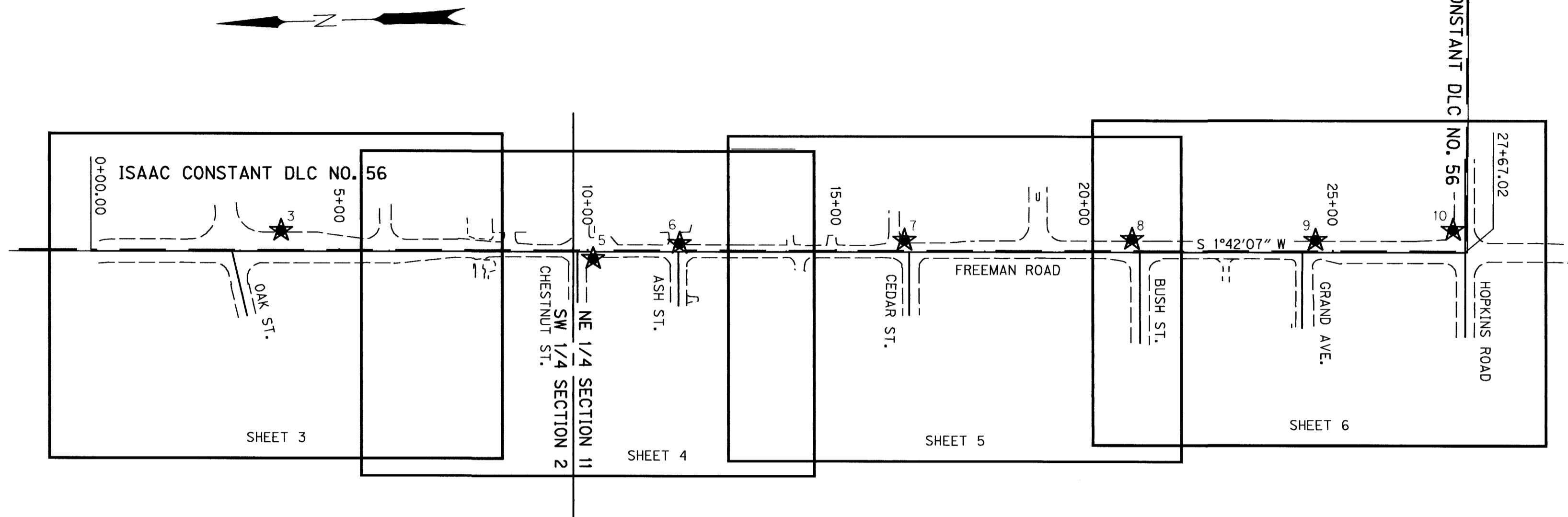


NW 1/4 SEC 11 T37S R2W WM
 SW 1/4 SEC 2 T37S R2W WM

**** RECEIVED ****
 DATE 5-31-06 BY AS
 This survey consists of:
6 sheet(s) Map
2 page(s) Narrative
 JACKSON COUNTY
 SURVEYOR



SHEET LAYOUT DIAGRAM
 NOT TO SCALE

NARRATIVE

THE PURPOSE OF THIS SURVEY IS TO RESOLVE THE FIELD LOCATION OF THE EXISTING RIGHT OF WAY FOR A PORTION OF FREEMAN ROAD FROM THE VICINITY OF OAK STREET TO THE INTERSECTION WITH HOPKINS ROAD. THIS SURVEY IS ALSO TO PERPETUATE ANY EXISTING SURVEY MONUMENTS THAT LIE NEAR THE FUTURE IMPROVEMENTS OF SAID STREET. PERPETUATION OF THE MONUMENT LOCATIONS WAS ACCOMPLISHED BY TIEING THE MONUMENT POSITIONS TO THE PROJECT CONTROL NETWORK. THIS SURVEY WAS MADE AT THE REQUEST OF THE CITY OF CENTRAL POINT AND MEETS THE REQUIREMENTS FOR A RECOVERY SURVEY AS OUTLINED IN THE OREGON REVISED STATUTES, CHAPTER 209.155.

THIS SURVEY WAS PERFORMED IN INTERNATIONAL FEET. TO CONVERT FROM INTERNATIONAL FEET TO METERS MULTIPLY BY 0.3048. TO CONVERT FROM INTERNATIONAL FEET TO U.S. SURVEY FEET MULTIPLY BY 0.999998.

THIS SURVEY UTILIZED A LOCAL DATUM PLANE (LDP) COORDINATE SYSTEM, WHICH IS RELATIVE TO THE OREGON STATE PLANE COORDINATE SYSTEM -SOUTH ZONE, NAD83(CORS 96) EPOCH 2002. TO CONVERT THE LDP COORDINATES TO THE OREGON STATE PLANE COORDINATE SYSTEM -SOUTH ZONE, NAD 83(CORS 96) EPOCH 2002, MULTIPLY THE COORDINATE VALUES BY A COMBINED FACTOR OF 0.99993283.

CONTROL POINTS FOR THIS SURVEY WERE NOT SET ON AND DO NOT REPRESENT PROPERTY LINES OR RIGHT OF WAY LINES AND ARE INTENDED FOR USE BY THE CITY OF CENTRAL POINT AND OBEC CONSULTING ENGINEERS IN SUPPORT OF FUTURE PROJECTS. IT IS NOT THE INTENT OF THE CITY OF CENTRAL POINT OR OBEC CONSULTING ENGINEERS TO PERPETUATE THESE CONTROL POINTS AS MONUMENTS.

THE INITIAL CONTROL SURVEY WAS MADE USING STATIC SURVEYING METHODS AND WAS PERFORMED IN JANUARY OF 2006. THE SURVEY EQUIPMENT CONSISTED OF ONE TRIMBLE 4400 GPS RECEIVER, TWO TRIMBLE R8 RECEIVERS, ONE TRIMBLE ACU DATA COLLECTOR, ONE TRIMBLE TSC2 DATA COLLECTOR AND ONE TRIMBLE TSC1 DATA COLLECTOR. FOUND RECORD OF SURVEY MONUMENTS WERE TIED USING A TRIMBLE 5600 TOTAL STATION WITH A TRIMBLE TSC2 DATA COLLECTOR.

FREEMAN ROAD

THIS RETRACEMENT OF THE RIGHT OF WAY WAS COMPLETED UTILIZING ROAD RECORD VOLUME 1, PAGE 161-162. THE ORIGINAL 1870 ESTABLISHMENT DOCUMENT CALLS ALONG THE WEST BOUNDARY OF DONATION LAND CLAIM (D.L.C.) NO. 56 FOR ALIGNMENT AND STATES A RIGHT OF WAY WIDTH OF 60 FEET. THIS SURVEY RETRACED THE RIGHT OF WAY BY HOLDING THE NORTHWEST CORNER AND SOUTHWEST CORNER OF SAID D.L.C. FOR CONTROL, BOTH FOUND TO BE MONUMENTED BY A 2 1/2" BRASS DISK. MONUMENTS SET PER FILED SURVEYS FIT WELL WITH THE ESTABLISHED RIGHT OF WAY LINE.

REFERENCES

- CEDAR SHADOWS SUBDIVISION UNIT 2
- CONSTANT TRACT
- GRANDVIEW ADDITION TO CENTRAL POINT
- COUNTRYSIDE TERRACE
- MINGUS CREEK ESTATES
- MOUNTAIN VIEW PLAZA SUBDIVISION
- OAK KNOLL SUBDIVISION
- THE MEADOWS
- THE MEADOWS PHASE 4
- VALLEY ESTATES
- CS 23
- CS 914
- CS 1431
- CS 1540
- CS 2020
- CS 2162
- CS 4758
- CS 6865
- CS 12558
- CS 14132
- CS 15855
- CS 16261
- CS 16250
- CS 16650
- CS 16865
- CS 17065
- CS 17195
- CS 18592
- CS 18764

LEGEND
 ★ SET GPS POINT



REGISTERED
 PROFESSIONAL
 LAND SURVEYOR

Andrew D. Ausland

OREGON
 JULY 15, 2003
 ANDREW D. AUSLAND
 56136

RENEWAL DATE: DEC. 31, 2007
 SIGNED: 6/27/06

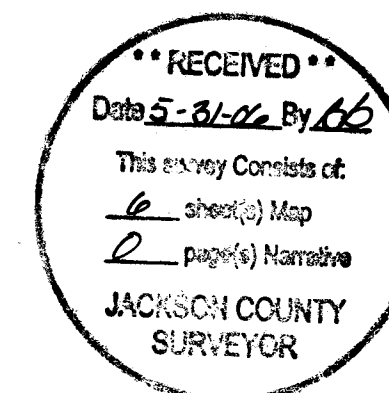
OBEC CONSULTING ENGINEERS
 1335 POPLAR DRIVE
 MEDFORD, OREGON 97504
 TEL. (541) 774-5590 FAX. (541) 774-5591

HORIZONTAL CONTROL, RECOVERY
 AND RETRACEMENT MAP
 FREEMAN ROAD IMPROVEMENT PROJECT
 FOR THE CITY OF CENTRAL POINT
 JACKSON COUNTY

JUNE 2006 SCALE 1" = 40'
 DESIGNED: A. AUSLAND PROJ. NO. 548-6 SHT. 1 OF 6
 DRAWN: R. ODEAR CHK'D: JOHN PARIANI FILE NO. 16661S

JOHN PARIANI *John PARIANI* OBEC
 APPROVED BY: GROUP MANAGER TITLE

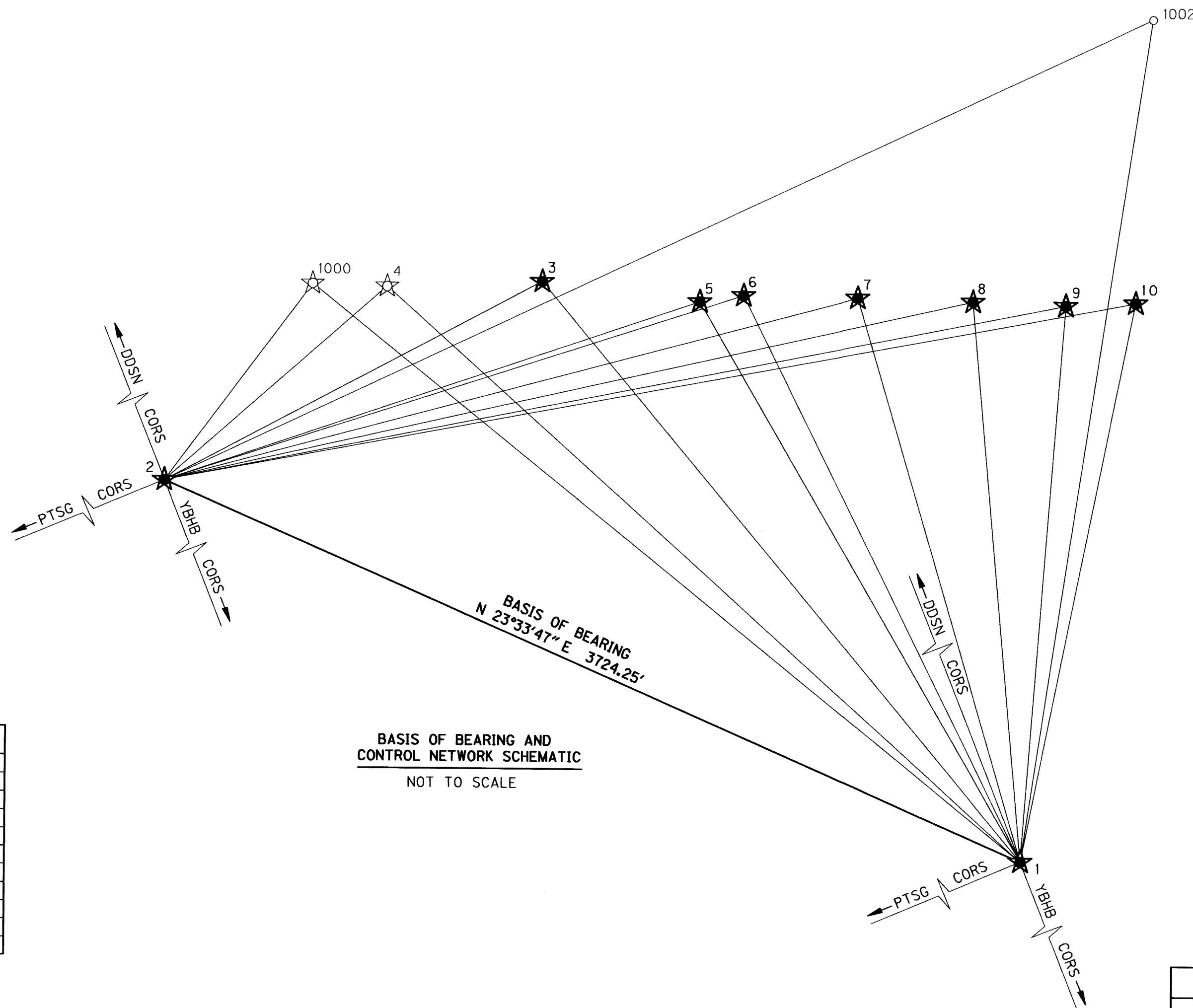
NW 1/4 SEC 11 T37S R2W WM
 SW 1/4 SEC 2 T37S R2W WM



CONTROL NARRATIVE

PROJECT: FREEMAN ROAD IMPROVEMENT PROJECT
 LOCATION: CITY OF CENTRAL POINT, JACKSON COUNTY, OREGON
 OBEC PROJECT: 548-6
 SURVEY DATUM:
 HORIZONTAL - NAD 83 (CORS96) EPOCH 2002 (INTERNATIONAL FEET)
 VERTICAL - NGVD 29(56) (INTERNATIONAL FEET)

THE INITIAL CONTROL NETWORK MONUMENTATION WAS SET AND A LEAST SQUARES ADJUSTMENT WAS PERFORMED ON THE PRIMARY GPS POINTS. THE TWO POSITIONS THAT WERE HELD FIXED FOR THIS NETWORK (POINTS 1 & 2) WERE ESTABLISHED USING STATIC OBSERVATIONS FROM CORS STATIONS "PTSG", "DDSN" AND "YBHB". NETWORK POINTS WERE ADJUSTED IN OREGON STATE PLANE - SOUTH ZONE, NAD 83(CORS96) EPOCH 2002. THIS SURVEY UTILIZED A LOCAL DATUM PLANE (LDP) COORDINATE SYSTEM, WHICH IS RELATIVE TO THE OREGON STATE PLANE COORDINATE SYSTEM - SOUTH ZONE, NAD83(CORS96) EPOCH 2002. TO CONVERT THE LDP COORDINATES TO THE OREGON STATE PLANE COORDINATE SYSTEM - SOUTH ZONE, NAD 83(CORS96) EPOCH 2002, MULTIPLY THE COORDINATE VALUES BY A COMBINED FACTOR OF 0.99993283.



1.96 SIGMA (95%) CONFIDENCE LEVEL LIMITS

POINT NO.	SEMI MAJOR	SEMI MINOR	ORIENTATION*
3	0.02 ift	0.02 ift	347°10'27"
4	0.02 ift	0.02 ift	344°27'48"
5	0.02 ift	0.02 ift	347°57'21"
6	0.02 ift	0.02 ift	349°55'13"
7	0.02 ift	0.02 ift	183°55'01"
8	0.02 ift	0.02 ift	228°13'55"
9	0.02 ift	0.02 ift	264°18'35"
10	0.02 ift	0.02 ift	282°25'45"
1000	0.02 ift	0.02 ift	354°12'27"
1001	0.02 ift	0.02 ift	233°43'44"
1002	0.02 ift	0.02 ift	351°29'38"

*** NORTH AZIMUTH**

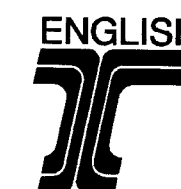
FIXED POINTS NOT SUBJECT TO LEAST SQUARES ADJUSTMENT OR CONFIDENCE LEVEL ANALYSIS: 1, 2

LEGEND	
	FOUND MONUMENT USED AS GPS NETWORK POINT
	SET GPS NETWORK POINT
	LINE(S) OF OBSERVATION
RPC	RED PLASTIC CAP

NETWORK POINT COORDINATE TABLE

PT. ID.	LDP NORTHING	LDP EASTING	DESCRIPTION
1	266107.08	4268922.14	SET 5/8" X 30" REBAR W/ RPC MARKED "OBEC CONTROL"
2	269520.80	4270410.95	SET 5/8" X 30" REBAR W/ RPC MARKED "OBEC CONTROL"
3	268025.39	4271216.36	SET MAG NAIL & WASHER MARKED "OBEC CONTROL"
4*	268640.98	4271192.84	FND 3" BRASS DISK MARKED "OREGON STATE HIGHWAY DIVISION"
5	267399.02	4271141.73	SET 5/8" X 30" REBAR W/ RPC MARKED "OBEC CONTROL"
6	267224.22	4271167.50	SET MAG NAIL & WASHER MARKED "OBEC CONTROL"
7	266771.12	4271160.83	SET 5/8" X 30" REBAR W/ RPC MARKED "OBEC CONTROL"
8	266313.05	4271150.07	SET MAG NAIL & WASHER MARKED "OBEC CONTROL"
9	265943.95	4271137.42	SET MAG NAIL & WASHER MARKED "OBEC CONTROL"
10	265666.59	4271149.88	SET MAG NAIL & WASHER MARKED "OBEC CONTROL"
1000	268937.60	4271201.61	FND 2 1/2" BRASS DISK MARKED "N.W. COR. D.L.C. 56 T.37.S.R.2W.", DN 3"
1001	265639.02	4271103.60	FND 2 1/2" BRASS DISK MARKED "SW 56 T37S R2W", FLUSH
1002	265606.74	4272281.96	FND 2 1/2" BRASS DISK MARKED "NE 54 T37S R2W", FLUSH

* INDICATES A POINT SET OUTSIDE MAPPING BOUNDARIES



REGISTERED PROFESSIONAL LAND SURVEYOR

ANDREW D. AUSLAND
 OREGON JULY 15, 2003
 ANDREW D. AUSLAND 56136

RENEWAL DATE: DEC. 31, 2007
 SIGNED: 6/27/06

JOHN PARIANI
 APPROVED BY: GROUP MANAGER TITLE

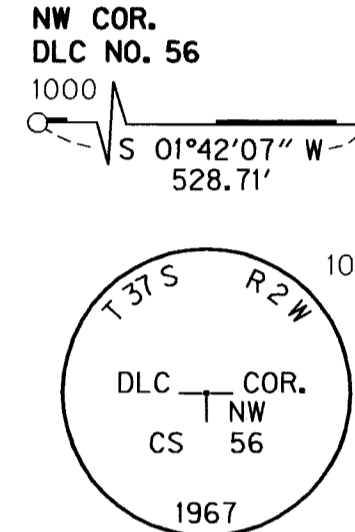
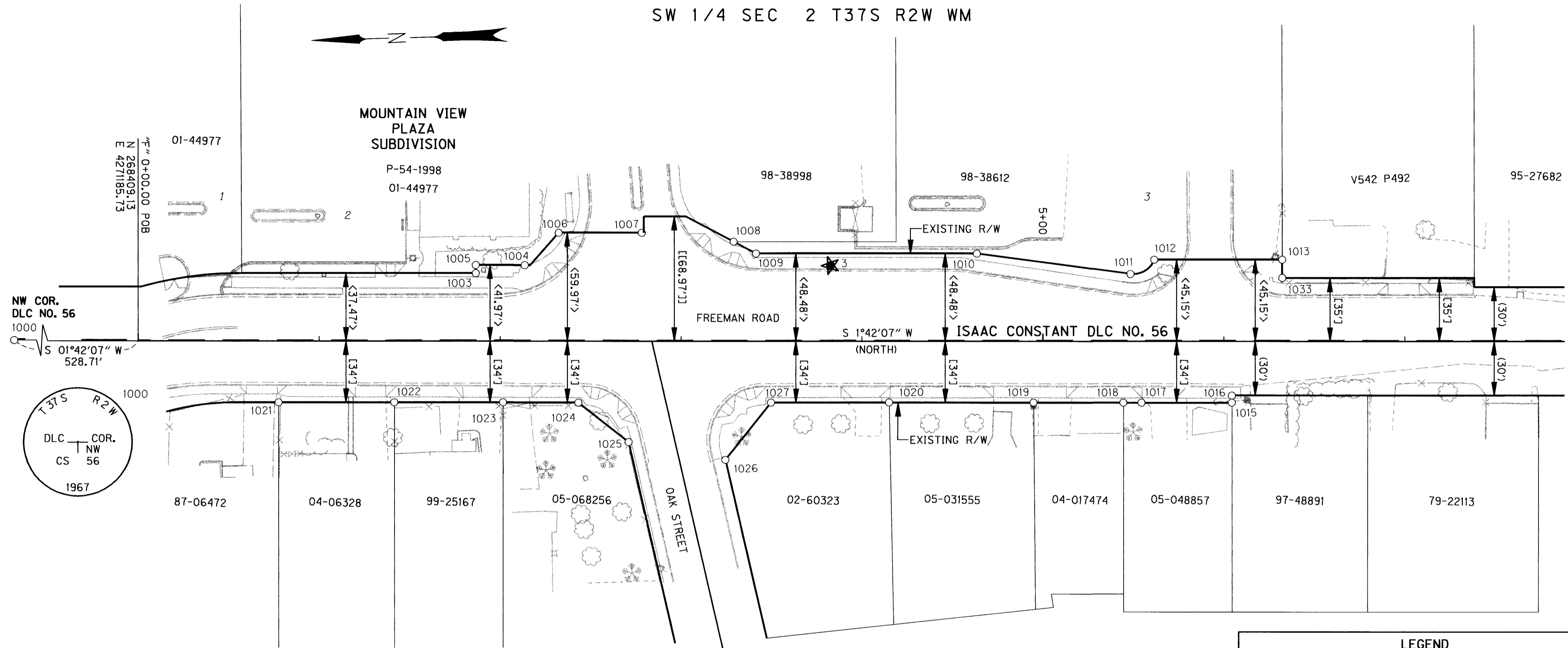
I:\projects\548\548006\Survey\Final\548006net.dgn DD-MMM-YYYY HHMM

OBEC CONSULTING ENGINEERS 1335 POPLAR DRIVE
 MEDFORD, OREGON 97504
 TEL. (541) 774-5590 FAX. (541) 774-5591

HORIZONTAL CONTROL, RECOVERY AND RETRACEMENT MAP
 FREEMAN ROAD IMPROVEMENT PROJECT
 FOR THE CITY OF CENTRAL POINT JACKSON COUNTY

JUNE 2006 SCALE 1" = 40'
 DESIGNED: A. AUSLAND PROJ. NO. 548-6 SHT. 2 OF 6
 DRAWN: R. ODEAR CHK'D: JOHN PARIANI FILE NO. 16662S

NW 1/4 SEC 11 T37S R2W WM
 SW 1/4 SEC 2 T37S R2W WM



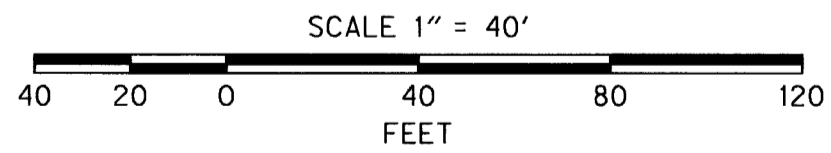
RECOVERED MONUMENT LIST

PT. ID.	LDP NORTHING	LDP EASTING	STATION	OFFSET	DATE	DESCRIPTION & REFERENCE DOCUMENTS
1000	268937.60	4271201.61	N/A	N/A	1-24-06	FND 2 1/2" BRASS DISK "N.W. COR. D.L.C. 56 T.37.S.R.2W.", DN 3"-JACKSON COUNTY
1003	268221.59	4271217.82	1+86.51	37.47' LT	1-24-06	FND 5/8" REBAR W/RPC "OSMUS PLS 2464", DN 1" - MOUNTAIN VIEW PLAZA SUBDIVISION
1004	268194.37	4271221.53	2+13.61	41.98' LT	1-24-06	FND LEAD & TACK "PLS 2464", FLUSH - MOUNTAIN VIEW PLAZA SUBDIVISION
1005	268221.45	4271222.31	1+86.52	41.96' LT	1-24-06	FND 5/8" REBAR W/RPC "OSMUS PLS 2464", DN 1" - MOUNTAIN VIEW PLAZA SUBDIVISION
1006	268175.01	4271238.88	2+32.44	59.90' LT	1-24-06	FND 5/8" REBAR W/RPC "OSMUS PLS 2464", DN 1" - MOUNTAIN VIEW PLAZA SUBDIVISION
1007	268129.13	4271237.54	2+78.34	59.92' LT	1-24-06	FND 5/8" REBAR W/RPC (UNREADABLE) FLUSH - MOUNTAIN VIEW PLAZA SUBDIVISION
1008	268078.57	4271231.11	3+29.07	55.00' LT	1-24-06	FND 5/8" REBAR W/RPC "OSMUS PLS 2464", FLUSH - MOUNTAIN VIEW PLAZA SUBDIVISION
1009	268066.40	4271224.20	3+41.44	48.45' LT	1-24-06	FND 5/8" REBAR W/RPC "OSMUS PLS 2464", FLUSH - MOUNTAIN VIEW PLAZA SUBDIVISION
1010	267944.37	4271220.58	4+63.53	48.46' LT	1-24-06	FND 5/8" REBAR W/RPC "OSMUS PLS 2464", FLUSH - MOUNTAIN VIEW PLAZA SUBDIVISION
1011	267859.88	4271206.79	5+48.39	37.18' LT	1-24-06	FND 5/8" REBAR W/RPC "OSMUS PLS 2464", FLUSH - MOUNTAIN VIEW PLAZA SUBDIVISION
1012	267846.47	4271214.30	5+61.57	45.09' LT	1-24-06	FND 5/8" REBAR W/RPC "OSMUS PLS 2464", FLUSH - MOUNTAIN VIEW PLAZA SUBDIVISION
1017	267855.89	4271135.54	5+54.49	33.92' RT	1-25-06	FND 5/8" REBAR W/RPC "OSMUS PLS 2464", UP 1" - SN 17195
1018	267865.92	4271135.84	5+44.46	33.91' RT	1-25-06	FND 5/8" REBAR, DN 2" - SN 16520
1019	267915.52	4271137.35	4+94.83	33.88' RT	1-25-06	FND 5/8" REBAR W/RPC "OSMUS PLS 2464", UP 1" - SN 16520
1020	267995.34	4271139.74	4+14.98	33.86' RT	1-25-06	FND 5/8" REBAR W/RPC (UNREADABLE) DN 2" - SN 16520
1021	268332.63	4271149.67	0+77.54	33.95' RT	1-25-06	FND 5/8" REBAR W/RPC "OSMUS PLS 2464", FLUSH - SN 16520
1022	268268.75	4271147.80	1+41.45	33.92' RT	1-25-06	FND 5/8" REBAR W/RPC "OSMUS PLS 2464", FLUSH - SN 16520
1023	268208.70	4271145.99	2+01.53	33.95' RT	1-25-06	FND 5/8" REBAR - SN 16520
1024	268167.01	4271144.67	2+43.24	34.03' RT	1-25-06	FND 5/8" REBAR W/RPC "OSMUS PLS 2464", FLUSH - SN 16520
1025	268139.86	4271122.17	2+71.04	55.71' RT	1-25-06	FND 5/8" REBAR W/RPC (UNREADABLE) - SN 16520
1026	268086.73	4271110.61	3+24.49	65.69' RT	1-25-06	FND 5/8" REBAR, BENT AND TIED AT SPIN HOLE - SN 16520
1027	268060.61	4271141.59	3+49.68	33.95' RT	1-25-06	FND 5/8" REBAR W/RPC (UNREADABLE) - SN 16520

RECEIVED
 Date 5-31-06 By VBB
 This survey consists of:
 6 sheet(s) Map
 2 page(s) Narrative
 JACKSON COUNTY SURVEYOR

LEGEND

- FOUND MONUMENT
- POWER POLE
- ★ SET GPS POINT
- YPC YELLOW PLASTIC CAP
- SN COUNTY SURVEY
- () PER ROAD RECORD VOL.1, PG. 161-162
- < > PER MOUNTAIN VIEW PLAZA SUBDIVISION
- [] PER SN 16520
- [[]] PER INSTRUMENT NO. 99-49149
- RIGHT OF WAY
- PROPERTY LINE
- - - EDGE PAVEMENT
- X - FENCE



REGISTERED PROFESSIONAL LAND SURVEYOR

ANDREW D. AUSLAND
 OREGON JULY 15, 2003
 ANDREW D. AUSLAND 56136

RENEWAL DATE: DEC. 31, 2007
 SIGNED: 6/27/06

JOHN PARIANI
 APPROVED BY: GROUP MANAGER TITLE

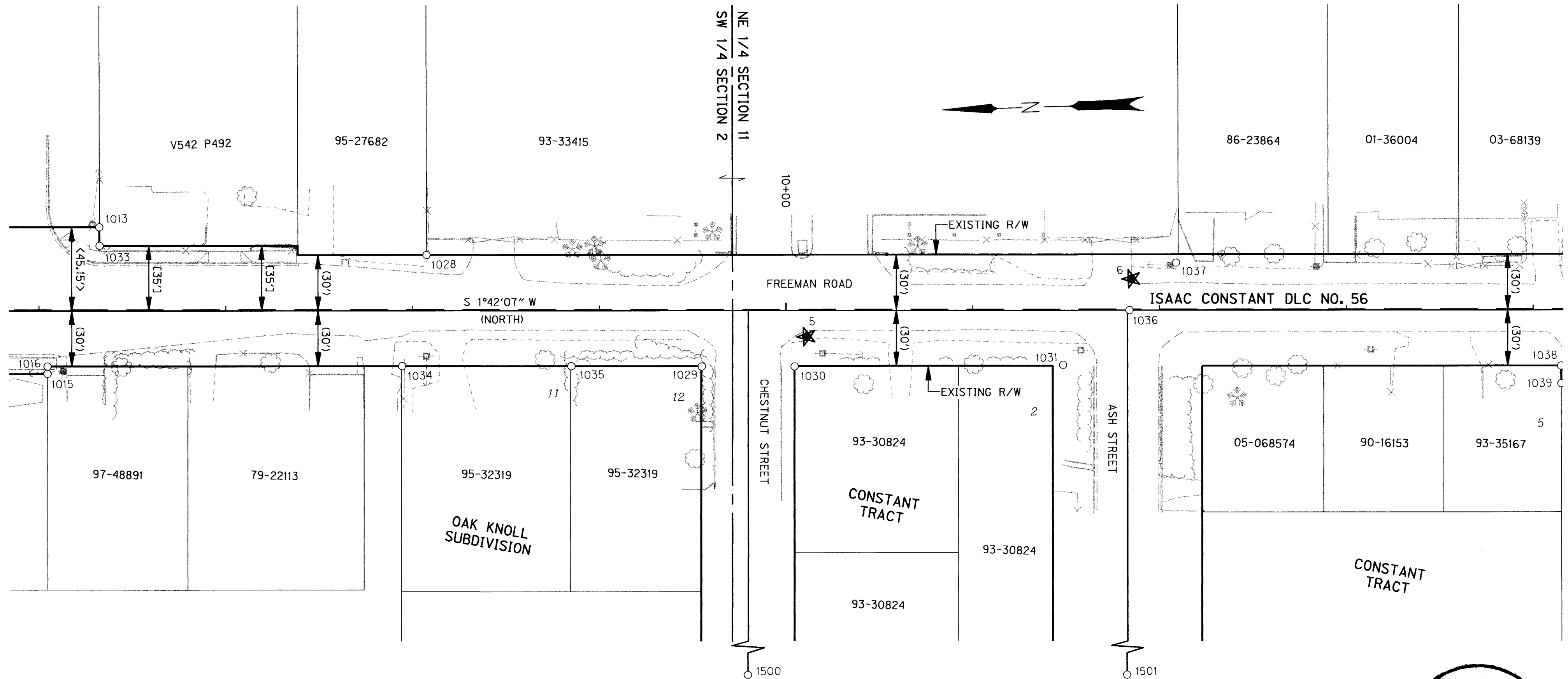
h:\projects\548\548006\Survey\Final\548006ret.dgn DD-MMM-YYYY HH:MM

OBEC CONSULTING ENGINEERS
 1335 POPLAR DRIVE
 MEDFORD, OREGON 97504
 TEL. (541) 774-5590 FAX. (541) 774-5591

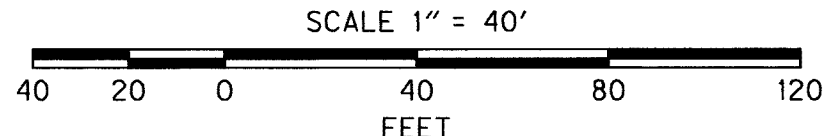
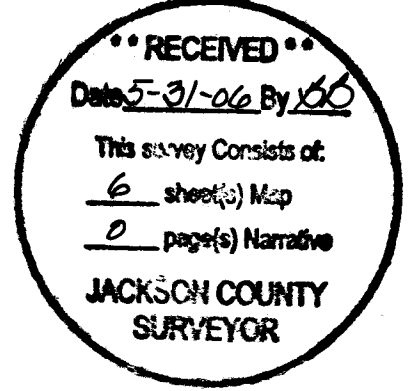
HORIZONTAL CONTROL, RECOVERY AND RETRACEMENT MAP
 FREEMAN ROAD IMPROVEMENT PROJECT
 FOR THE CITY OF CENTRAL POINT
 JACKSON COUNTY

JUNE 2006 SCALE 1" = 40'
 DESIGNED: A. AUSLAND PROJ. NO. 548-6 SHT. 3 OF 6
 DRAWN: R. ODEAR CHK'D: JOHN PARIANI FILE NO. 166635

NW 1/4 SEC 11 T37S R2W WM
 SW 1/4 SEC 2 T37S R2W WM



LEGEND			
○	FOUND MONUMENT	—	RIGHT OF WAY
■	POWER POLE	—	PROPERTY LINE
★	SET GPS POINT	---	EDGE PAVEMENT
YPC	YELLOW PLASTIC CAP	-X-	FENCE
SN	COUNTY SURVEY	[]	PER SN 16520
()	PER ROAD RECORD		
	VOL. 1, PG. 161-162		



RECOVERED MONUMENT LIST

PT. ID.	LDP NORTHING	LDP EASTING	STATION	OFFSET	DATE	DESCRIPTION & REFERENCE DOCUMENTS
1013	267775.80	4271212.26	6+32.27	45.15' LT	1-24-06	FND 5/8" REBAR W/RPC "OSMUS PLS 2464", FLUSH - MOUNTAIN VIEW PLAZA SUBDIVISION
1015	267805.98	4271134.07	6+04.42	33.90' RT	1-24-06	FND 5/8" REBAR W/RPC "OSMUS PLS 2464", DN 4" - SN 16520
1016	267805.82	4271137.98	6+04.47	29.99' RT	1-24-06	FND MAG NAIL (NO WASHER) - UNKNOWN ORIGIN
1028	267601.16	4271191.92	8+07.44	30.00' LT	2-13-06	FND 5/8" REBAR, DN 10" - SN 1431
1029	267455.70	4271127.51	9+54.74	30.06' RT	2-13-06	FND 3/4" REBAR, DN 5" - OAK KNOLL SUBDIVISION
1030	267405.92	4271126.01	10+04.55	30.08' RT	2-13-06	FND 1" (ID) IRON PIPE, BENT AND TIED AT SPIN HOLE - OAK KNOLL SUBDIVISION
1031	267262.21	4271122.47	11+48.30	29.35' RT	2-13-06	FND 5/8" REBAR, DN 5" AND BENT, TIED AT SPIN HOLE - UNKNOWN ORIGIN
1033	267776.01	4271202.21	6+32.36	35.10' LT	2-13-06	FND 5/8" REBAR W/RPC "OSMUS PLS 2464", DN 10" - SN 15855
1034	267616.11	4271132.46	7+94.26	29.87' RT	2-13-06	FND STEEL STAKE, BENT, DN 2" - OAK KNOLL SUBDIVISION
1035	267525.45	4271129.73	8+84.96	29.91' RT	2-13-06	FND 5/8" REBAR, DN 3" - OAK KNOLL SUBDIVISION
1036	267225.76	4271150.78	11+83.89	0.03' LT	2-13-06	FND MAG NAIL W/SHINER - UNKNOWN ORIGIN
1037	267200.11	4271175.56	12+08.79	25.56' LT	2-13-06	FND 3/4" (ID) IRON PIPE, DN 5" - SN 4758
1500	267451.53	4270445.91	9+79.16	711.23' RT		FND 2-1/2" IRON PIPE W/ 2-1/2" BRONZE DISK "C/L MON 2271" DN 2"- OAK KNOLL SUB.
1501	267248.06	4270442.01	11+82.65	709.09' RT		FND 2-1/2" IRON PIPE W/ 3" BRONZE DISK, "LS 2271" DN 2"



REGISTERED PROFESSIONAL LAND SURVEYOR

ANDREW D. AUSLAND
 JULY 15, 2003
 56136

RENEWAL DATE: DEC. 31, 2007
 SIGNED: 6/27/06

JOHN PARIANI
 APPROVED BY: GROUP MANAGER TITLE

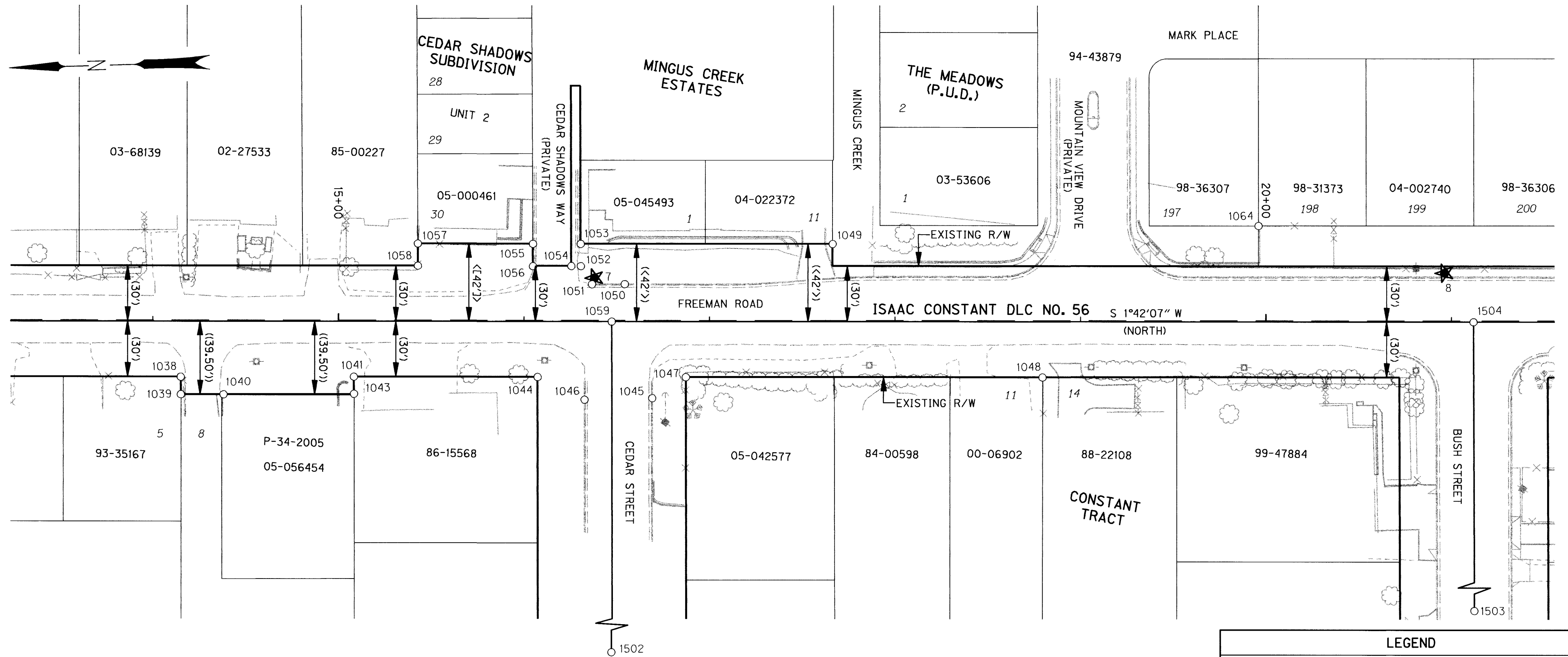
DD-MMM-YYYY HH:MM

OBEC CONSULTING ENGINEERS
 1335 POPLAR DRIVE
 MEDFORD, OREGON 97504
 TEL. (541) 774-5590 FAX. (541) 774-5591

HORIZONTAL CONTROL, RECOVERY AND RETRACEMENT MAP
 FREEMAN ROAD IMPROVEMENT PROJECT
 FOR THE CITY OF CENTRAL POINT
 JACKSON COUNTY

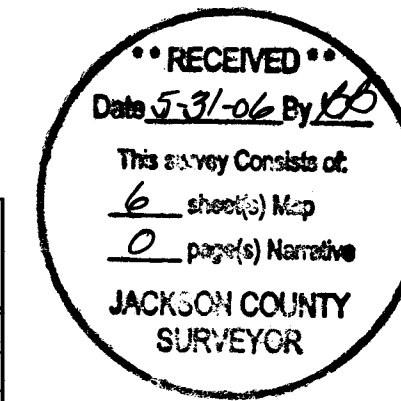
JUNE 2006 SCALE 1" = 40'
 DESIGNED: A. AUSLAND PROJ. NO. 548-6 SHT. 4 OF 6
 DRAWN: R. ODEAR CHK'D: JOHN PARIANI FILE NO. 16664S

NW 1/4 SEC 11 T37S R2W WM
 SW 1/4 SEC 2 T37S R2W WM

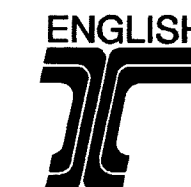
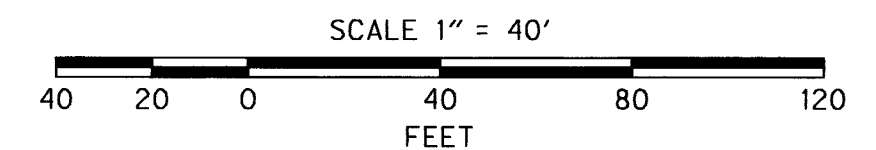


RECOVERED MONUMENT LIST

PT. ID.	LDP NORTHING	LDP EASTING	STATION	OFFSET	DATE	DESCRIPTION & REFERENCE DOCUMENTS
1038	266995.61	4271113.85	14+15.04	30.05' RT	2-13-06	FND 5/8" REBAR W/YPC "FRIAR & ASSOC", DN 4" - SN 18764
1039	266995.78	4271104.41	14+15.15	39.49' RT	2-13-06	FND 5/8" REBAR W/TPC " FRIAR & ASSOC", FLUSH - SN 18764
1040	266972.81	4271103.68	14+38.13	39.54' RT	2-13-06	FND 5/8" REBAR W/YPC "FRIAR & ASSOC", DN 2" - SN 18764
1041	266902.36	4271111.17	15+08.33	29.96' RT	2-16-06	FND 5/8" REBAR W/YPC "FRIAR & ASSOC", FLUSH - SN 18764
1043	266902.56	4271101.93	15+08.40	39.20' RT	2-16-06	FND 5/8" REBAR W/YPC "FRIAR & ASSOC", FLUSH - SN 18764
1044	266803.32	4271108.19	16+07.41	29.99' RT	2-16-06	FND 5/8" REBAR, UP 1" - SN 6865
1045	266741.92	4271094.96	16+69.18	41.39' RT	2-16-06	FND LEAD TACK AND WASHER "LS 2675" - SN 16865
1046	266778.40	4271095.17	16+32.71	42.27' RT	2-16-06	FND LEAD TACK AND WASHER "LS 2675" - SN 16865
1047	266723.45	4271105.79	16+87.32	30.02' RT	2-16-06	FND 5/8" REBAR, DN 3"
1048	266531.25	4271100.11	18+79.60	29.99' RT	2-16-06	FND 3/4" REBAR, DN 2" - SN 2162
1049	266642.22	4271175.40	17+66.44	41.97' LT	2-16-06	FND 5/8" REBAR W/YPC (UNREADABLE) DN 1" - MINGUS CREEK ESTATES SUBDIVISION
1050	266754.90	4271157.01	16+54.36	20.24' LT	2-16-06	FND LEAD TACK AND WASHER "LS 2675" - SN 16865
1051	266772.58	4271157.48	16+36.67	20.19' LT	2-16-06	FND LEAD TACK AND WASHER "LS 2675" - SN 16865
1052	266778.30	4271167.38	16+30.66	29.91' LT	2-16-06	FND 5/8" REBAR W/YPC "FRIAR & ASSOC", DN 3" - MINGUS CREEK ESTATES SUBDIVISION
1053	266777.99	4271179.42	16+30.61	41.96' LT	2-16-06	FND LEAD TACK AND WASHER "L.J. FRIAR & ASSOC" - MINGUS CREEK EST. SUBDIVISION
1054	266783.39	4271167.58	16+25.57	29.96' LT	2-16-06	FND 5/8" REBAR W/TPC (UNREADABLE) FLUSH - SN 16650
1055	266803.73	4271180.19	16+04.86	41.96' LT	2-16-06	FND LEAD TACK AND WASHER "LS 2657" - CEDAR SHADOWS SUBDIVISION
1056	266804.08	4271168.08	16+04.87	29.85' LT	2-16-06	FND 5/8" REBAR W/TPC (UNREADABLE) FLUSH - SN 16650
1057	266865.74	4271182.06	15+42.82	41.99' LT	2-16-06	FND 5/8" REBAR, UP 3" - CEDAR SHADOWS SUBDIVISION
1058	266866.06	4271170.10	15+42.86	30.03' LT	2-16-06	FND 5/8" REBAR W/TPC "BRAUGHTON", UP 4" - CEDAR SHADOWS SUBDIVISION
1059	266762.51	4271136.98	16+47.35	0	2-16-06	FND 5/8" REBAR W/ALUMINUM CAP "C/L MON LS 2675", FLUSH - SN 16865
1064	266412.51	4271178.54	19+95.96	51.93' LT	2-17-06	FND 5/8" REBAR W/TPC "KAISER, RLS 803" DN 2" - THE MEADOWS (P.U.D.)
1502	266776.97	4270622.51	16+48.17	514.68' RT	2-17-06	FND 2" BRASS DISK, DN 2" - CS 18764
1503	266311.79	4270607.78	21+13.59	515.58' RT	2-17-06	FND 1-1/2" ALUMINUM CAP, "C/L MON LS 2675", FLUSH



LEGEND	
○	FOUND MONUMENT
■	POWER POLE
★	SET GPS POINT
YPC	YELLOW PLASTIC CAP
SN	COUNTY SURVEY
()	PER ROAD RECORD VOL. 1, PG. 161-162
(())	PER PARTITION PLAT NO. P-34-2005
(< >)	PER MINGUS CREEK ESTATES
< []	CEDAR SHADOWS SUBDIVISION
—	RIGHT OF WAY
—	PROPERTY LINE
---	EDGE PAVEMENT
-X-	FENCE



REGISTERED PROFESSIONAL SURVEYOR

Andrew D. Ausland

OREGON JULY 15, 2003 ANDREW D. AUSLAND 56136

RENEWAL DATE: DEC. 31, 2007 SIGNED: 5/31/06

JOHN PARIANI APPROVED BY: GROUP MANAGER TITLE

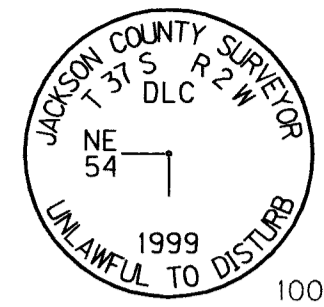
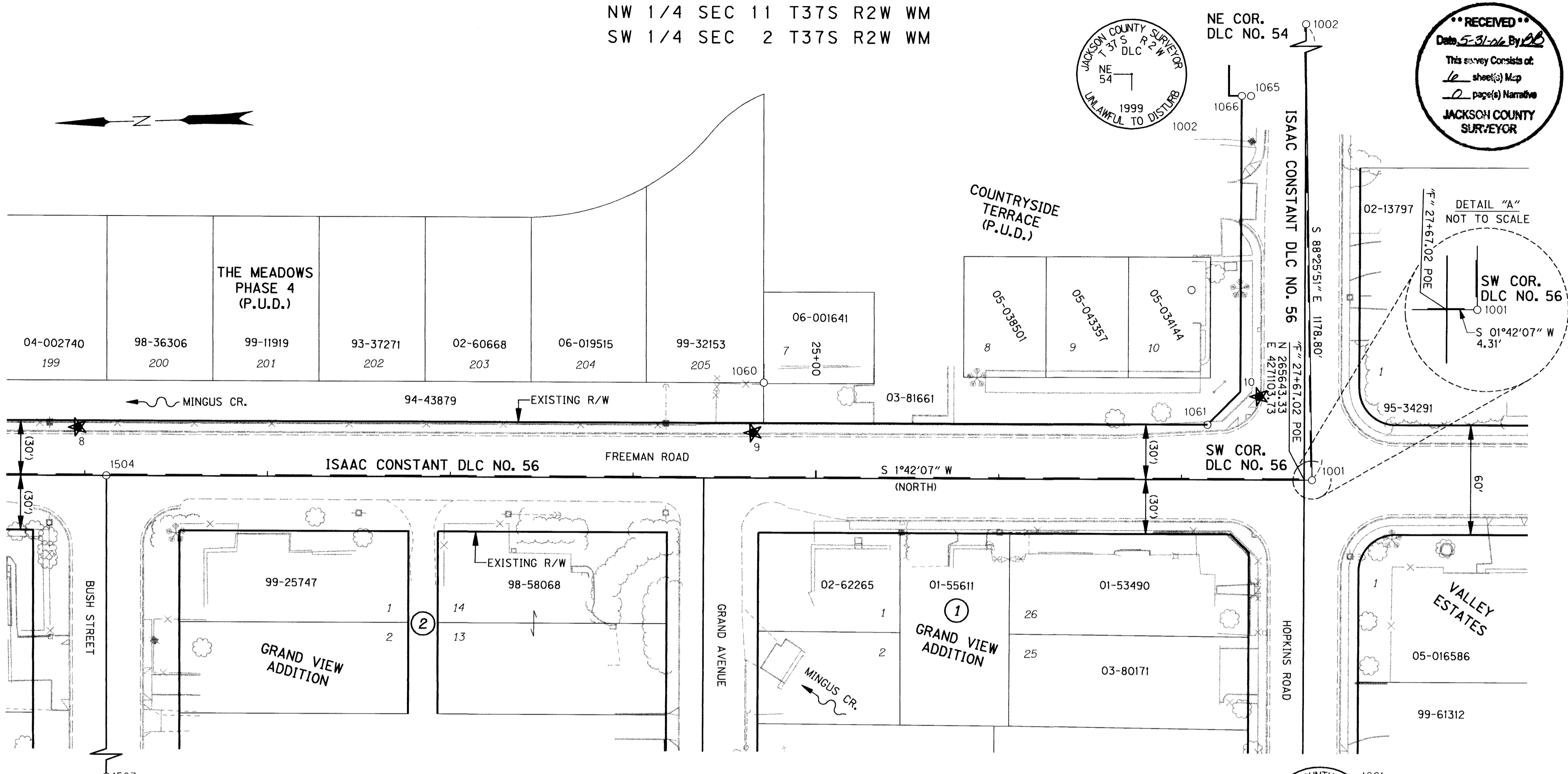
\\projects\548\548006\Survey\Final\548006ref.dgn DD-MMM-YYYY HH:MM

OBECE CONSULTING ENGINEERS
 1335 POPLAR DRIVE MEDFORD, OREGON 97504
 TEL. (541) 774-5590 FAX. (541) 774-5591

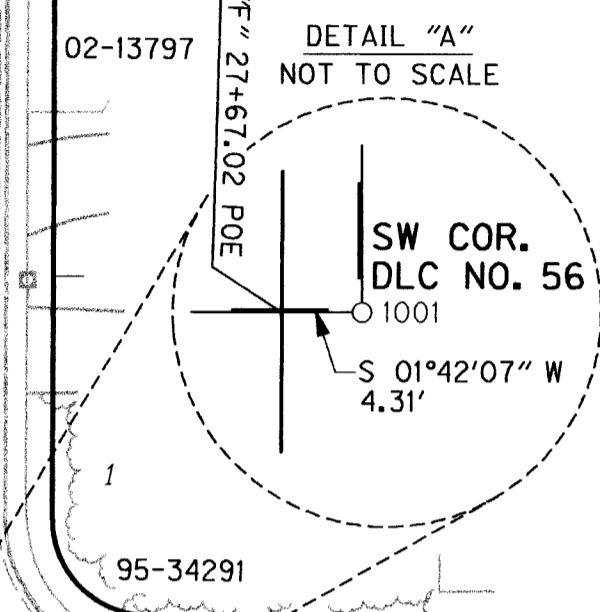
HORIZONTAL CONTROL, RECOVERY AND RETRACEMENT MAP
 FREEMAN ROAD IMPROVEMENT PROJECT
 FOR THE CITY OF CENTRAL POINT JACKSON COUNTY

JUNE 2006 SCALE 1" = 40'
 DESIGNED: A. AUSLAND PROJ. NO. 548-6 SHT. 5 OF 6
 DRAWN: R. ODEAR CHK'D: JOHN PARIANI FILE NO. 166655

NW 1/4 SEC 11 T37S R2W WM
 SW 1/4 SEC 2 T37S R2W WM

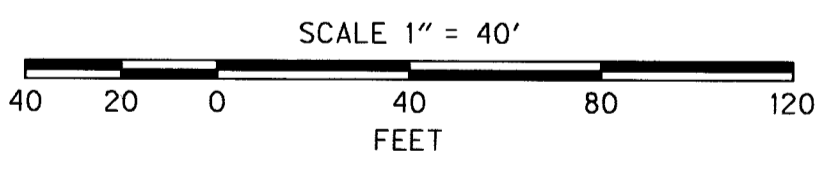


RECEIVED
 Date 5-31-06 By RL
 This survey consists of:
16 sheet(s) Map
2 page(s) Narrative
JACKSON COUNTY SURVEYOR



LEGEND

○	FOUND MONUMENT	—	RIGHT OF WAY
■	POWER POLE	—	PROPERTY LINE
★	SET GPS POINT	---	EDGE PAVEMENT
YPC	YELLOW PLASTIC CAP	-X-	FENCE
CS	COUNTY SURVEY	()	PER ROAD RECORD VOL. 1, PG. 161-162



RECOVERED MONUMENT LIST

PT. ID.	LDP NORTHING	LDP EASTING	STATION	OFFSET	DATE	DESCRIPTION & REFERENCE DOCUMENTS
1001	265639.02	4271103.60	N/A	N/A	1-02-06	FND 2-1/2" BRASS DISK "SW 56 T37S R2W", FLUSH - JACKSON COUNTY SURVEYOR
1002	265606.74	4272281.96	N/A	N/A	1-20-06	FND 2-1/2" BRASS DISK "NE 54 T37S R2W", FLUSH - JACKSON COUNTY SURVEYOR
1060	265937.35	4271164.52	24+71.32	52.03' LT	2-17-06	FND 5/8" REBAR W/YPC "KAISER, RLS 803" DN 12" - THE MEADOWS - PHASE 4
1061	265695.37	4271135.28	27+14.07	29.99' LT	2-17-06	FND LEAD TACK AND WASHER "NEATHAMER, LS 56545" - COUNTRYSIDE VILLAGE (P.U.D.)
1065	265666.78	4271314.50	27+37.32	209.98' LT	2-17-06	FND 5/8" REBAR W/YPC "FRIAR & ASSOC", DN 5" - SN 16261
1066	265671.79	4271314.65	27+32.31	209.98' LT	2-17-06	FND 5/8" REBAR W/YPC "FRIAR & ASSOC", DN 2" - SN 18764 - SN 16261
1503	266311.79	4270607.78	21+13.59	N/A	2-17-06	FND 1-1/2" ALUMINUM CAP, "C/L MON LS 2675", FLUSH - SN 16865
1504	266298.22	4271123.16	21+11.84	0.03' RT	2-17-06	FND 5/8" REBAR, DN 12" - REF SN 16865

ENGLISH

 REGISTERED PROFESSIONAL LAND SURVEYOR
Andrew D. Ausland
 OREGON JULY 15, 2003
ANDREW D. AUSLAND
 56136
 RENEWAL DATE: DEC. 31, 2007
 SIGNED: 6/27/06

h:\projects\548\548006\Survey\Final\548006ret.dgn DD-MM-YYYY HHMM

OBE CONSULTING ENGINEERS
 1335 POPLAR DRIVE
 MEDFORD, OREGON 97504
 TEL. (541) 774-5590 FAX. (541) 774-5591

**HORIZONTAL CONTROL, RECOVERY AND RETRACEMENT MAP
 FREEMAN ROAD IMPROVEMENT PROJECT
 FOR THE CITY OF CENTRAL POINT
 JACKSON COUNTY**

JUNE 2006 SCALE 1" = 40'

DESIGNED: A. AUSLAND	PROJ. NO. 548-6	SHT. 6 OF 6
DRAWN: R. ODEAR	CHK'D: JOHN PARIANI	FILE NO. 16666S