

**P I N E R I D G E D R I V E
M O N U M E N T R E C O V E R Y P L A T**
LOCATED IN
THE N.E. 1/4 OF SEC. 25, T. 37 S., R. 1 W., W.M. AND
THE S.W. 1/4 OF SEC. 19, T. 37 S., R. 1 E., W.M., JACKSON COUNTY, OREGON

SUNRIDGE ESTATES SUBDIVISION
PHASE III

SURVEY NARRATIVE TO COMPLY WITH O.R.S. 209.250

SURVEY FOR: JACKSON COUNTY ROADS AND PARKS
200 ANTELOPE ROAD
WHITE CITY, OREGON 97503

PURPOSE OF SURVEY: TO SHOW RECOVERED MONUMENTS OF RECORD AND THEIR LOCATIONS PRIOR TO A ROAD REALIGNMENT AND RECONSTRUCTION PROJECT. AT THE PRESENT, PINERIDGE DRIVE IS WITHIN A LOCAL IMPROVEMENT DISTRICT (L.I.D.). FOLLOWING THE RECONSTRUCTION OF THE ROAD TO COUNTY STANDARDS IT SHALL BE DESIGNATED AS A COUNTY ROAD.

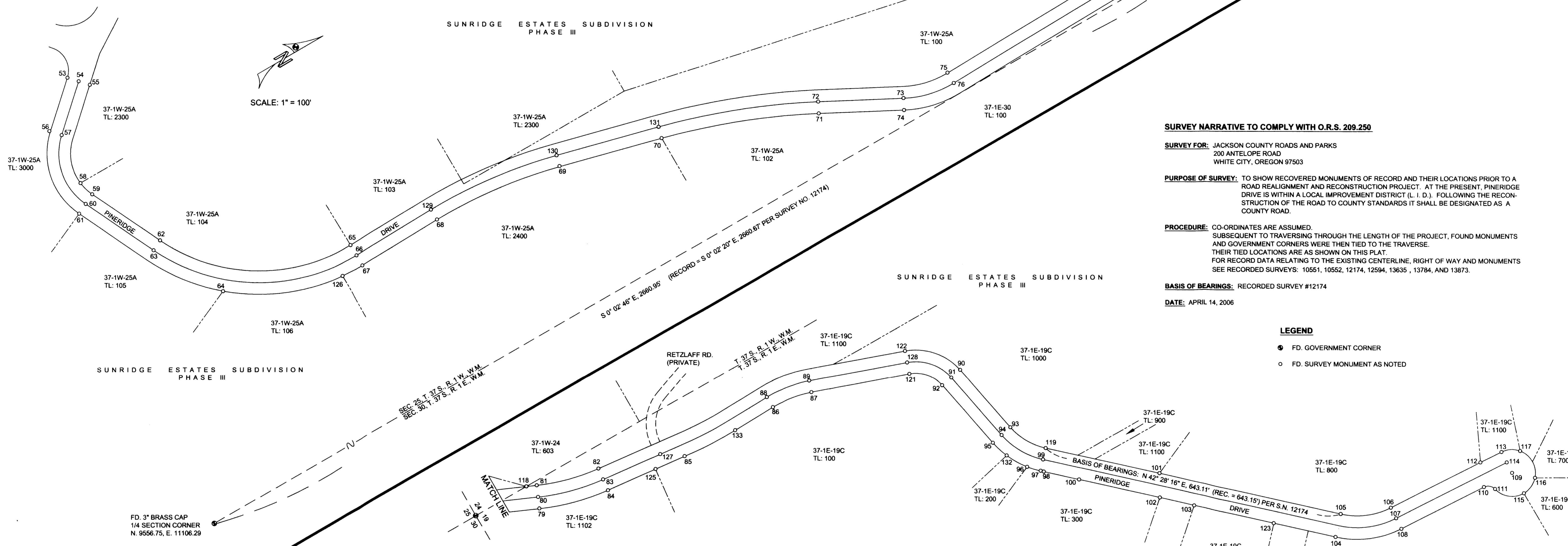
PROCEDURE: CO-ORDINATES ARE ASSUMED. SUBSEQUENT TO TRAVERSING THROUGH THE LENGTH OF THE PROJECT, FOUND MONUMENTS AND GOVERNMENT CORNERS WERE THEN TIED TO THE TRAVERSE. THEIR TIED LOCATIONS ARE AS SHOWN ON THIS PLAT. FOR RECORD DATA RELATING TO THE EXISTING CENTERLINE, RIGHT OF WAY AND MONUMENTS SEE RECORDED SURVEYS: 10551, 10552, 12174, 12594, 13635, 13784, AND 13873.

BASIS OF BEARINGS: RECORDED SURVEY #12174

DATE: APRIL 14, 2006

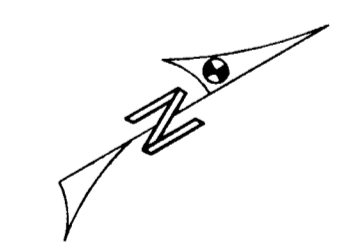
LEGEND

- FD. GOVERNMENT CORNER
- FD. SURVEY MONUMENT AS NOTED



R E C O V E R E D M O N U M E N T L I S T

#53 5/8" I. PIN, NO CAP, S.N. 10551, BENT SOUTH-EASTERLY, N. 9978.41, E. 10127.81	#68 PIN & PLASTIC CAP STAMPED 'D. MCMAHAN L.S. 1913', S.N. 12174, N. 10509.78, E. 10782.95	#83 5/8" I. PIN (NO CAP), S.N. 13784, N. 12491.75, E. 11172.64	#98 PIN & PLASTIC CAP STAMPED 'D. MCMAHAN L.S. 1913', S.N. 12174, N. 13315.40, E. 11625.30	#112 5/8" I. PIN (NO CAP), S.N. 12174, N. 14121.74, E. 12071.34	#126 PIN & PLASTIC CAP STAMPED 'D. MCMAHAN L.S. 1913', S.N. 12174, N. 10274.03, E. 10785.46
#54 PUNCHED RAILROAD SPIKE OF UNKNOWN ORIGIN, N. 9995.24, E. 10146.17	#69 PIN & PLASTIC CAP STAMPED 'D. MCMAHAN L.S. 1913', S.N. 12174, N. 10793.13, E. 10814.25	#84 PIN & PLASTIC CAP STAMPED 'D. MCMAHAN L.S. 1913', S.N. 12174, BENT NORTHERLY, N. 12489.23, E. 11197.70	#99 PIN & ALUM. CAP STAMPED 'L.S. 1913', S.N. 13784, N. 13327.04, E. 11602.18	#113 P.K. NAIL OF UNKNOWN ORIGIN, S.N. 12174 CALLS FOR PIN & PLASTIC CAP, N. 14181.70, E. 12074.08	#127 5/8" I. PIN (NO CAP), S.N. 13635, BENT OVER SOUTHERLY, N. 12624.57, E. 11186.46
#55 PIN & PLASTIC CAP STAMPED 'D. MCMAHAN L.S. 1913', S.N. 12174, N. 10012.15, E. 10164.63	#70 PIN & PLASTIC CAP STAMPED 'D. MCMAHAN L.S. 1913', S.N. 12174, BENT NORTHERLY, N. 11011.87, E. 10870.96	#85 PIN & PLASTIC CAP STAMPED 'D. MCMAHAN L.S. 1913', S.N. 12174, BENT NORTHERLY, N. 12667.12, E. 11216.07	#100 PIN & PLASTIC CAP STAMPED 'D. MCMAHAN L.S. 1913', S.N. 12174, N. 13371.98, E. 11677.20	#114 PIN & ALUM. CAP STAMPED 'L.S. 1913', S.N. 13784, N. 14180.32, E. 12099.01	#128 5/8" I. PIN (NO CAP), S.N. 13784, BENT OVER SOUTHWESTERLY, N. 13179.28, E. 11278.19
#56 PIN & PLASTIC CAP STAMPED 'R. BATH L.S. 1069', S.N. 10551, BENT SOUTHWESTERLY, N. 9888.46, E. 10206.39	#71 PIN & PLASTIC CAP STAMPED 'D. MCMAHAN L.S. 1913', S.N. 12174, N. 11329.70, E. 10992.46	#86 PIN & PLASTIC CAP STAMPED 'D. MCMAHAN L.S. 1913', S.N. 12174, N. 12882.08, E. 11218.66	#101 PIN & PLASTIC CAP STAMPED 'D. MCMAHAN L.S. 1913', S.N. 12174, BENT WESTERLY, N. 13626.21, E. 11750.47	#115 PIN & PLASTIC CAP STAMPED 'D. MCMAHAN L.S. 1913', S.N. 12594, N. 14179.45, E. 12174.10	#129 5/8" I. PIN (NO CAP), S.N. 13784, BENT OVER SOUTHERLY, N. 10509.25, E. 10756.27
#57 PIN & ALUM. CAP STAMPED 'L.S. 1913', S.N. 13784, N. 9906.68, E. 10226.67	#72 PIN & ALUM. CAP STAMPED 'L.S. 1913', S.N. 13784, N. 11341.21, E. 10970.32	#87 PIN & PLASTIC CAP STAMPED 'D. MCMAHAN L.S. 1913', S.N. 12174, N. 12970.94, E. 11232.34	#102 PIN & PLASTIC CAP STAMPED 'D. HUCK L.S. 2023', S.N. 13873, N. 13501.11, E. 11795.49	#116 5/8" I. PIN (NO CAP), S.N. 12174, N. 14216.16, E. 12157.45	#130 PIN & ALUM. CAP STAMPED 'L.S. 1913', S.N. 13784, N. 10799.24, E. 10791.35
#58 5/8" I. PIN (NO CAP), S.N. 10551, N. 9890.04, E. 10335.33	#73 PIN & ALUM. CAP STAMPED 'L.S. 1913', S.N. 13784, N. 11502.05, E. 11053.75	#88 PIN & ALUM. CAP STAMPED 'L.S. 1913', S.N. 13784, N. 12882.06, E. 11193.69	#103 PIN & PLASTIC CAP STAMPED 'D. MCMAHAN L.S. 1913', S.N. 12174, N. 13556.29, E. 11846.22	#117 PIN & PLASTIC CAP STAMPED 'D. MCMAHAN L.S. 1913', S.N. 12174, N. 14217.42, E. 12062.07	#131 5/8" I. PIN (NO CAP), S.N. 13784, BENT OVER SOUTHERLY, N. 11018.22, E. 10847.14
#59 PIN & PLASTIC CAP STAMPED 'D. MCMAHAN L.S. 1913', S.N. 12174, N. 9899.90, E. 10368.56	#74 PIN & PLASTIC CAP STAMPED 'D. MCMAHAN L.S. 1913', S.N. 12174, N. 11490.25, E. 11078.27	#89 PIN & ALUM. CAP STAMPED 'L.S. 1913', S.N. 13784, N. 12979.13, E. 11208.77	#104 PIN & PLASTIC CAP STAMPED 'D. MCMAHAN L.S. 1913', S.N. 12174, N. 13784.47, E. 12054.90	#118 PIN & PLASTIC CAP STAMPED 'D. MCMAHAN L.S. 1913', S.N. 12174, N. 12342.73, E. 11104.06	#132 5/8" I. PIN (NO CAP), S.N. 13873, BENT NORTH-EASTERLY, N. 13264.27, E. 11556.03
#60 PIN & ALUM. CAP STAMPED 'L.S. 1913', S.N. 13784, N. 9877.38, E. 10379.48	#75 PIN & PLASTIC CAP STAMPED 'D. MCMAHAN L.S. 1913', S.N. 12174, N. 11610.01, E. 11053.88	#90 PIN & ALUM. CAP STAMPED 'D. MCMAHAN L.S. 1913', S.N. 12174, N. 13289.27, E. 11348.17	#105 PIN & PLASTIC CAP STAMPED 'D. MCMAHAN L.S. 1913', S.N. 12174, N. 13818.36, E. 12018.13	#119 5/8" I. PIN (NO CAP), S.N. 12174, N. 13344.01, E. 11583.85	#133 PIN & PLASTIC CAP STAMPED 'D. MCMAHAN L.S. 1913', S.N. 12174, N. 12787.61, E. 11220.93
#61 5/8" I. PIN (NO CAP), S.N. 10551, BENT SLIGHTLY N. 9854.82, E. 10390.41	#76 PIN & ALUM. CAP STAMPED 'L.S. 1913', S.N. 13784, N. 11610.62, E. 11079.49	#91 PIN & ALUM. CAP STAMPED 'L.S. 1913', S.N. 13784, N. 13244.76, E. 11533.12	#106 PIN & PLASTIC CAP STAMPED 'D. MCMAHAN L.S. 1913', S.N. 12174, N. 12218.20, E. 10978.92	#120 PIN & PLASTIC CAP STAMPED 'D. MCMAHAN L.S. 1913', S.N. 12174, N. 13917.87, E. 12056.75	#121 PIN & PLASTIC CAP STAMPED 'D. MCMAHAN L.S. 1913', S.N. 12174, BENT WESTERLY, N. 13171.10, E. 11301.83
#62 PIN & PLASTIC CAP STAMPED 'D. MCMAHAN L.S. 1913', S.N. 12174, N. 9976.20, E. 10525.71	#77 2 1/2" BRASS CAP STAMPED 'INITIAL POINT SUNRIDGE ESTATES PHASE II', S.N. 10552, N. 12218019, E. 11004.31	#92 PIN & PLASTIC CAP STAMPED 'D. MCMAHAN L.S. 1913', S.N. 12174, N. 13219.73, E. 11357.80	#107 PIN & ALUM. CAP STAMPED 'L.S. 1913', S.N. 13784, N. 13816.47, E. 12084.83	#122 PIN & PLASTIC CAP STAMPED 'D. MCMAHAN L.S. 1913', S.N. 12174, BENT SOUTHERLY, N. 13187.67, E. 11254.61	#123 5/8" I. PIN (NO CAP), BURIED IN 3" FILL, S.N. 13873, N. 13685.30, E. 11964.21
#63 PIN & ALUM. CAP STAMPED 'L.S. 1913', S.N. 13784, N. 9953.62, E. 10536.79	#78 3" BRASS CAP, SECTION CORNER, LEANING WESTERLY 0.2° +/-, N. 12217.69, E. 11104.17	#93 PIN & PLASTIC CAP STAMPED 'D. MCMAHAN L.S. 1913', S.N. 12174, N. 13301.13, E. 11507.89	#108 5/8" I. PIN (NO CAP), S.N. 12174, BENT OVER SOUTHWESTERLY, N. 13814.84, E. 12109.78	#124 PIN & ALUM. CAP STAMPED 'L.S. 1913', S.N. 13784, N. 12229.98, E. 11082.18	#125 PIN & PLASTIC CAP STAMPED 'D. MCMAHAN L.S. 1913', S.N. 12174, N. 12599.74, E. 11209.03
#64 PIN & PLASTIC CAP STAMPED 'D. MCMAHAN L.S. 1913', S.N. 12174, N. 10038.24, E. 10686.33	#79 PIN & PLASTIC CAP STAMPED 'D. MCMAHAN L.S. 1913', S.N. 12174, N. 12343.15, E. 11158.61	#94 PIN & ALUM. CAP STAMPED 'L.S. 1913', S.N. 13784, N. 13276.71, E. 11512.88	#109 PIN & ALUM. CAP STAMPED 'L.S. 1913', S.N. 13784, N. 14178.92, E. 12124.93	#126 PIN & PLASTIC CAP STAMPED 'D. MCMAHAN L.S. 1913', S.N. 12174, N. 14111.92, E. 12120.45	
#65 PIN & PLASTIC CAP STAMPED 'D. MCMAHAN L.S. 1913', S.N. 12174, N. 10321.79, E. 10737.30	#80 PIN & ALUM. CAP STAMPED 'L.S. 1913', S.N. 13784, N. 12353.06, E. 11136.00	#95 PIN & PLASTIC CAP STAMPED 'D. MCMAHAN L.S. 1913', S.N. 12174, N. 13252.33, E. 11517.84	#110 PIN & PLASTIC CAP STAMPED 'D. MCMAHAN L.S. 1913', S.N. 12174, N. 14111.92, E. 12120.45	#127 PIN & PLASTIC CAP STAMPED 'D. MCMAHAN L.S. 1913', S.N. 12174, BENT WESTERLY, N. 13171.10, E. 11301.83	
#66 PIN & ALUM. CAP STAMPED 'L.S. 1913', S.N. 13784, N. 10782.31, E. 10322.31	#81 PIN & PLASTIC CAP STAMPED 'D. MCMAHAN L.S. 1913', S.N. 12174, N. 12363.11, E. 11113.12	#96 PIN & PLASTIC CAP STAMPED 'D. HUCK L.S. 2023', S.N. 13873, N. 13288.82, E. 11586.82	#111 PIN & PLASTIC CAP STAMPED 'D. MCMAHAN L.S. 1913', S.N. 12174, N. 14130.44, E. 12135.74		
#67 PIN & PLASTIC CAP STAMPED 'D. MCMAHAN L.S. 1913', S.N. 12174, N. 10322.90, E. 10787.29	#82 PIN & PLASTIC CAP STAMPED 'D. MCMAHAN L.S. 1913', S.N. 12174, N. 12494.54, E. 11147.76	#97 5/8" I. PIN (NO CAP), S.N. 12174, BENT OVER NORTHEASTERLY, N. 13310.56, E. 11620.47			



SCALE: 1" = 100'

JACKSON COUNTY ROADS AND PARKS SERVICES
200 ANTELOPE ROAD
WHITE CITY, OREGON 97503

RECEIVED
 Date 5-30-06 By *[Signature]*
 This Survey Consists of
 1 sheet(s) Map
 2 page(s) Narrative
 JACKSON COUNTY SURVEYOR

REGISTERED
 PROFESSIONAL
 LAND SURVEYOR
James P. Dickerson
 OREGON
 JANUARY 17, 1995
 JAMES P. DICKERSON
 2691
 EXP. 12-31-07