

MAP OF SURVEY

FOR
CITY OF ASHLAND, ENGINEERING DIVISION
20 EAST MAIN STREET, ASHLAND, OREGON 97520

LOCATED IN
THE NE 1/4 AND THE NW 1/4 OF SECTION 9, AND THE NW 1/4 OF SECTION 10
TOWNSHIP 39 SOUTH, RANGE 1 EAST, WILLAMETTE MERIDIAN,
CITY OF ASHLAND, JACKSON COUNTY, OREGON

LEGEND

- ⊙ SET 1" X 30" IRON PIPE W/3" DIAMETER BRASS CAP W/DRILL HOLE, STAMPED "CITY OF ASHLAND SURVEY MONUMENT LS 2464" IN STANDARD STREET MONUMENT CASE
- REFERENCE POINT: SET 3/16" DRILL HOLE W/LEAD PLUG AND TACK IN TOP OF CURB, UNLESS OTHERWISE NOTED
- TOP OF CURB
- FB FIELD BOOK

NOTES

1. ALL SET MONUMENTS ARE AT THE INTERSECTION OF REFERENCE POINTS.
2. ALL DISTANCES MEASURED LEVEL WITH CALIBRATED 100' STEEL TAPE, NATIONAL BUREAU OF STANDARDS NO. 13683, UNLESS OTHERWISE NOTED

SURVEY NARRATIVE
TO COMPLY WITH PARAGRAPH 209.250, OREGON REVISED STATUTES

PURPOSE:

To reference and replace monuments removed by various street and utility repair projects in Ashland.

PROCEDURE: Prior to construction, monuments were referenced by drilling holes in the concrete curbs and setting lead plugs and tacks. After the street was paved or patched, new monuments and cases were set.

January 26, 2006

I CERTIFY THAT THIS SURVEY WAS PREPARED WITH ARCHIVAL QUALITY MATERIALS AS REQUIRED BY ORS 209.250. SPECIFIC PRODUCTS USED ARE HEWLETT PACKARD INK #51640A ON COMSTOCK 130444 POLYESTER FILM.

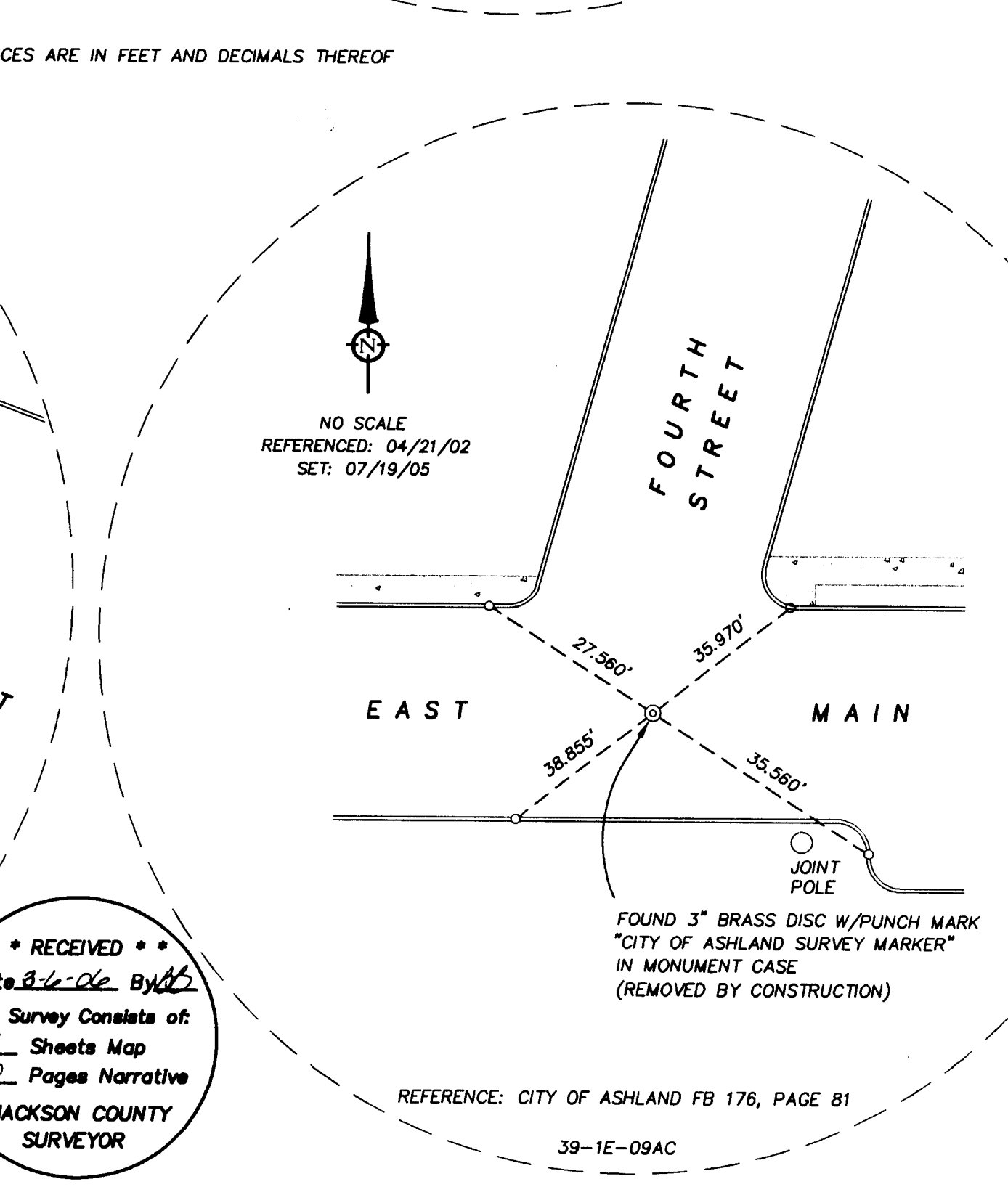
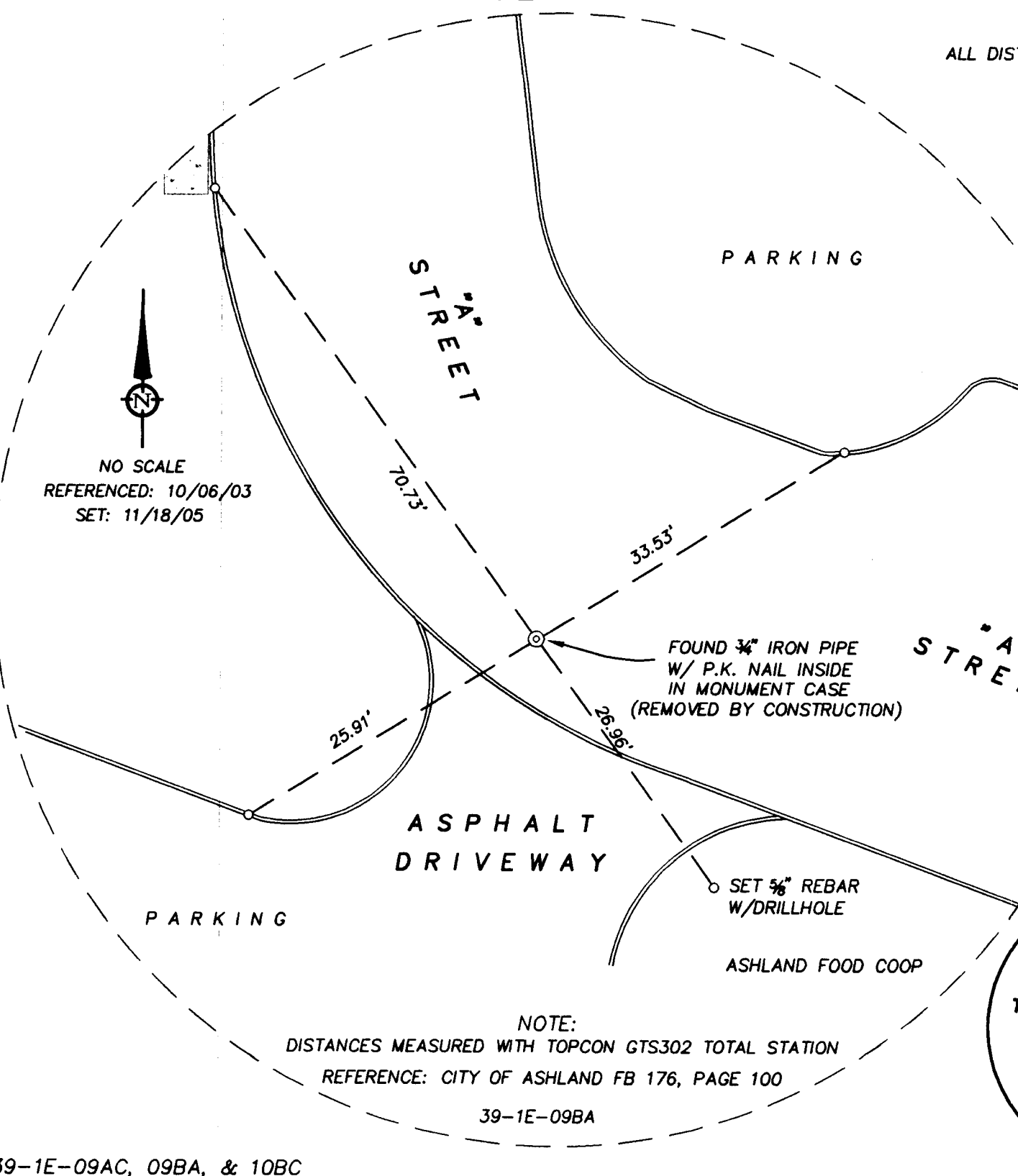
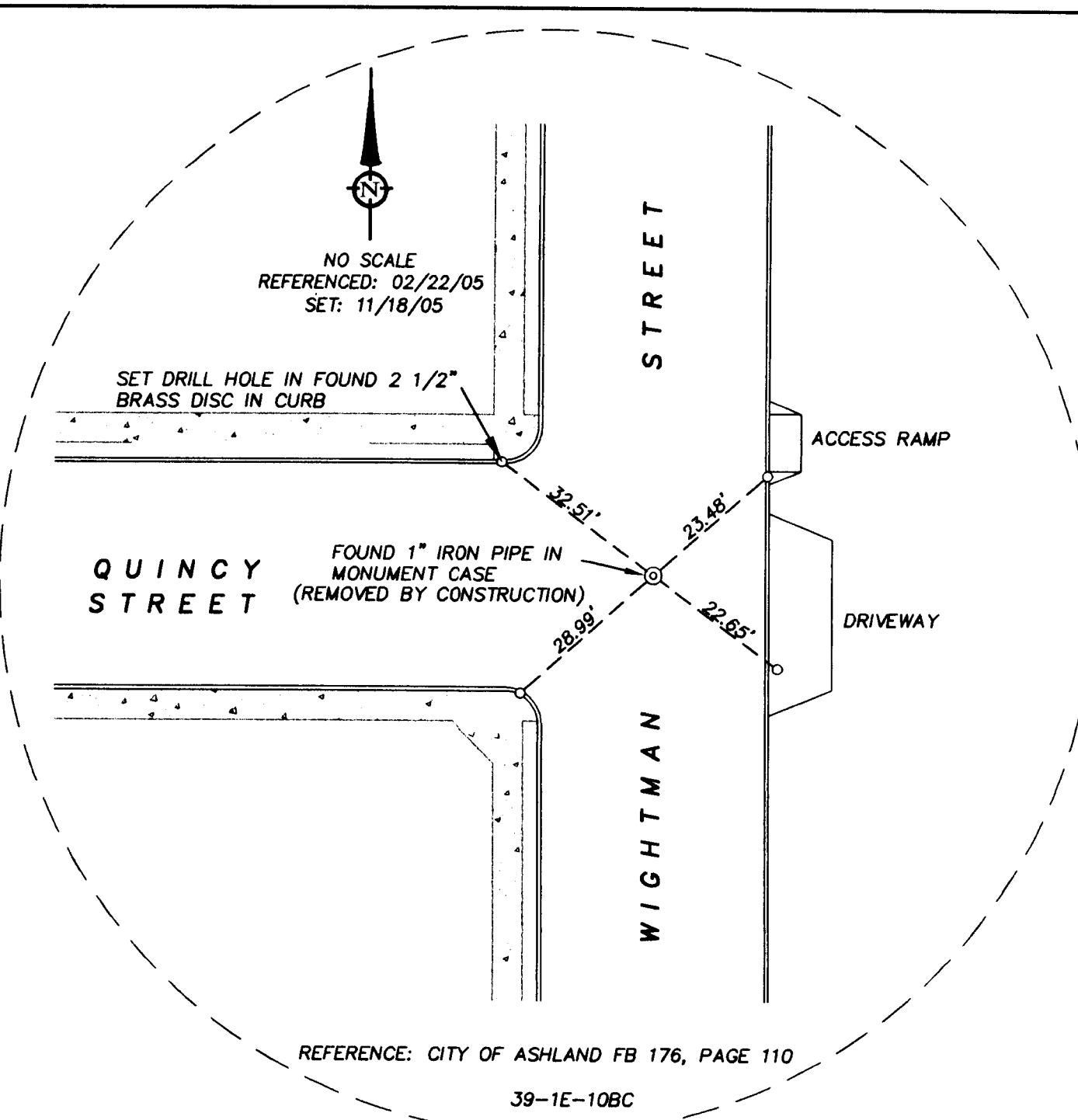
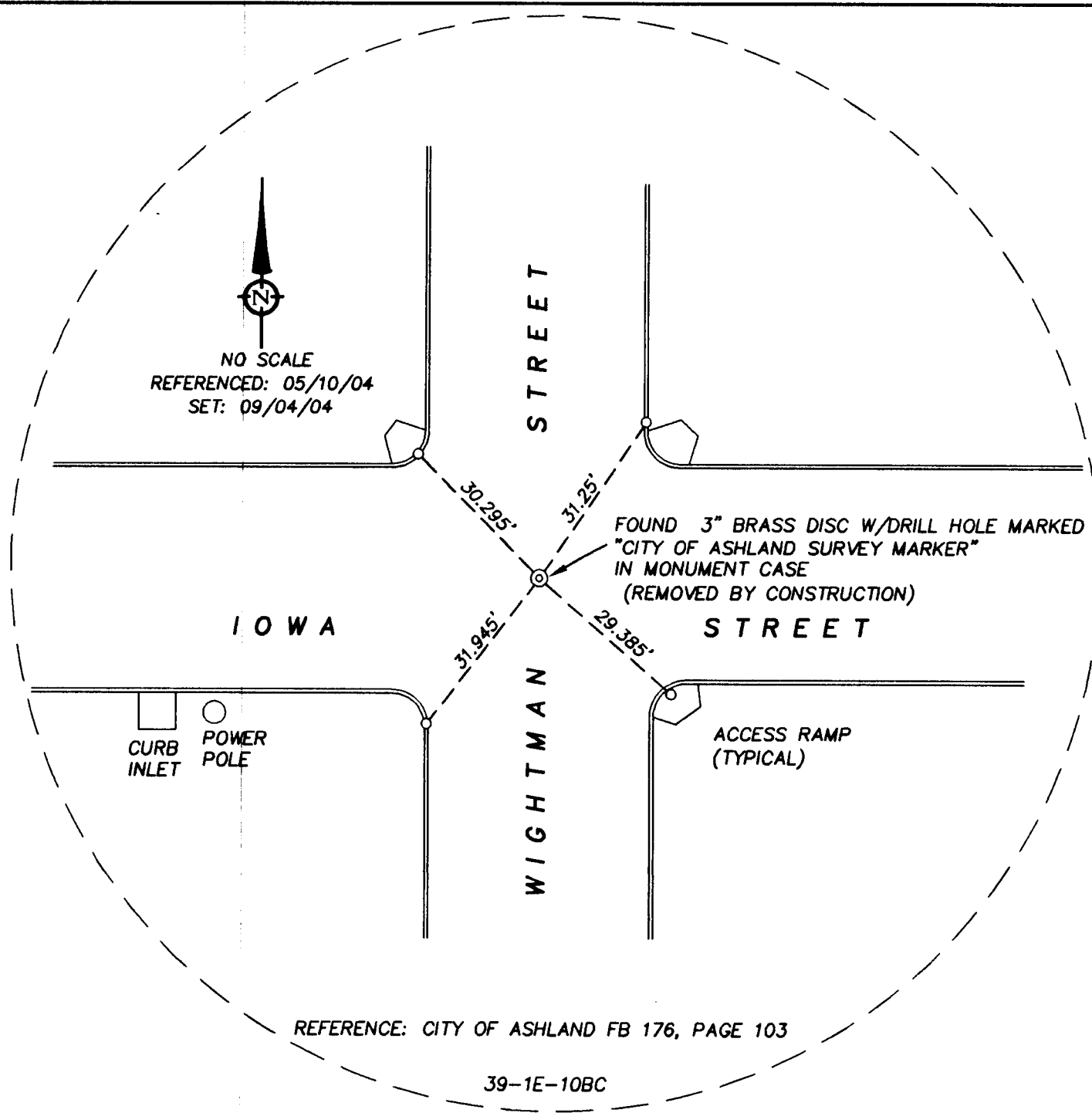
Stuart M. Osmus 2/06/06
STUART M. OSMUS, PLS 2464 DATE

REGISTERED
PROFESSIONAL
LAND SURVEYOR

Stuart M. Osmus
OREGON
JULY 25, 1992
STUART M. OSMUS
No. 2464
Expires 12/31/06

TERRASURVEY, INC.
PROFESSIONAL LAND SURVEYORS

274 FOURTH STREET
ASHLAND, OREGON 97520
(541) 482-6474
terrain@bisp.net



ALL DISTANCES ARE IN FEET AND DECIMALS THEREOF

**** RECEIVED ****
Date *8-16-06* By *[Signature]*
This Survey Consists of:
1 Sheets Map
2 Pages Narrative
JACKSON COUNTY
SURVEYOR