

# LONE ROCK TIMBER MANAGEMENT COMPANY

PO BOX 1127 ROSEBURG, OREGON

SURVEY: M35 - 2E - 24 TRACT

JACKSON COUNTY

TOWNSHIP 35 SOUTH RANGE 2 EAST, W.M. SOUTH LINE OF SECTION 24

DATE: DECEMBER 2005

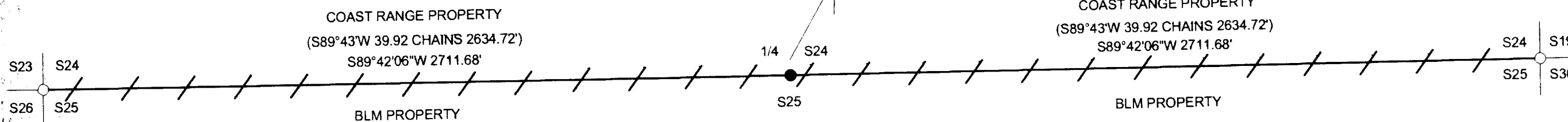
LAND OWNER: COAST RANGE RESOURCES

SCALE 1" = 400'

**NARRATIVE:**

THIS SURVEY WAS CONDUCTED TO ESTABLISH PROPERTY LINES AND PROPERTY CORNERS FOR TIMBER CUTTING PURPOSES. WE INITIATED THIS SURVEY AT THE SOUTHWEST CORNER OF SECTION 24 A BLM BCIP SET FROM ORIGINAL EVIDENCE. WE BEGAN A RANDOM OPEN TRAVERSE WITH TRAVERSE POINTS SET IN THE OPEN FOR GPS ON THE ADJACENT ROCK ROAD. WE THEN TRAVERSED EASTERLY ALONG THE SOUTH LINE OF SECTION 24 TO POINTS NEAR THE ORIGINAL MEASUREMENTS FOR AN ORIGINAL LINE TREE AND BEARING TREES FOR THE SOUTH 1/4 OF SECTION 24. WE COULD NOT FIND ANY CONCLUSIVE EVIDENCE TO ESTABLISH THE SOUTH 1/4 CORNER FROM ORIGINAL EVIDENCE. WE THEN CONTINUED OUR TRAVERSE EASTERLY TO THE SOUTHEAST CORNER OF SECTION 24 A BLM BCIP SET BY PROPORTION. WE ALSO ESTABLISHED TRAVERSE POINTS NEAR THE SOUTHEAST CORNER AND THE SOUTH 1/4 OF SECTION 24 IN THE OPEN SKY FOR GPS ON ADJACENT ROCKED ROADS. WE THEN RAN A GPS SURVEY OF THESE OPEN TRAVERSE POINTS TO CHECK CONTROL OF OUR CONVENTIONAL TRAVERSE. WE THEN SET THE SOUTH 1/4 AT PROPORTIONATE MEASUREMENT AND MARKED THE PROPERTY LINES AS SHOWN. THIS SURVEY WAS DONE WITH A NIKON DTM 450, TRIMBLE 4400 AND 4000 SSE WITH GARY ANGIOLET, IGNACIO ROMAN AND PAT KELLY ASSISTING ME.

SET 5/8" X 40" IRON ROD WITH 2 1/2" ALUMINUM CAP MARKED LONE ROCK TIMBER  
 T.35 S. R.2 E. 1/4 S24 S25 2005 PLS2291  
 20" WHITE FIR BEARS S54 1/4"E 6.0 FEET WE SCRIBE T35S R2E S25 BT & TAG TREE  
 16" WHITE FIR BEARS N7 1/2"E 13.6 FEET WE SCRIBE T35S R2E S24 BT & TAG TREE  
 20" WHITE FIR BEARS N40 3/4"W 24.2 FEET WE SCRIBE 1/4 S24 BT & TAG TREE  
 15" WHITE FIR BEARS S37 3/4"W 39.6 FEET WE SCRIBE 1/4 S25 BT & TAG TREE  
 CORNER LIES APPROX. 250 FEET EAST OF THE 35-2E-24 ROAD ON 40% EAST FACING SLOPE.



FOUND 1969 BLM BRASS CAP IN GOOD CONDITION  
 31" DOUGLAS FIR BEARS N44°E 34.4 FEET (RECORD N43°E 34.32 FEET) HEALED FACE & TAG  
 45" WHITE FIR BEARS N86 3/4°W 13.6 FEET (RECORD N84°W 13.86 FEET) HEALED FACE & TAG  
 31" DOUGLAS FIR BEARS N67 3/4°W 37.4 FEET (RECORD N67°W 37.62 FEET) HEALED FACE & TAG  
 25" DOUGLAS FIR BEARS S14 1/4°W 31.1 FEET (RECORD S14 1/2°W 31.35 FEET HEALED FACE & TAG  
 CORNER LIES APPROX. 225 FEET WEST AND 50 FEET NORTH OF THE 35-2E-13 ROAD

FOUND 1963 BLM BRASS CAP IN GOOD CONDITION  
 15" WHITE FIR BEARS S57 3/4°W 17.5 FEET (RECORD S58°W 17.49 FEET) HEALED FACE & TAG  
 12" FIR STUMP BEARS N47 1/4°W 32.2 FEET (RECORD N47°W 32.34 FEET) HEALED FACE & TAG  
 23" DOUGLAS FIR BEARS N27 1/2°E 64.3 FEET (RECORD N27 1/2°E 64.68 FEET) HEALED FACE & TAG  
 13" FIR BEARS S88°E 37.8 FEET (RECORD S88°E 37.62 FEET) HEALED FACE WE TAG  
 CORNER LIES APPROX. 150 FEET EAST AND 280 FEET NORTH OF THE 35-3E-30 ROAD

**LEGEND:**

- ORIGINAL GLO FIELD NOTES FILED IN JACKSON COUNTY SURVEYORS OFFICE
- LINES BLAZED, PAINTED, & TAGGED
- FOUND BLM CORNERS
- SET 2 1/2" ALUMINUM CAP

REGISTERED  
 PROFESSIONAL  
 LAND SURVEYOR  
*Ken W. Hoffine*  
 OREGON  
 JULY 15 1987  
 KEN W. HOFFINE  
 229

EXPIRES 6-30-07

RECEIVED  
 Date 1-12-06  
 This survey consists of  
 1 sheet(s) Map  
 0 page(s) Narrative  
 JACKSON COUNTY  
 SURVEYOR

