

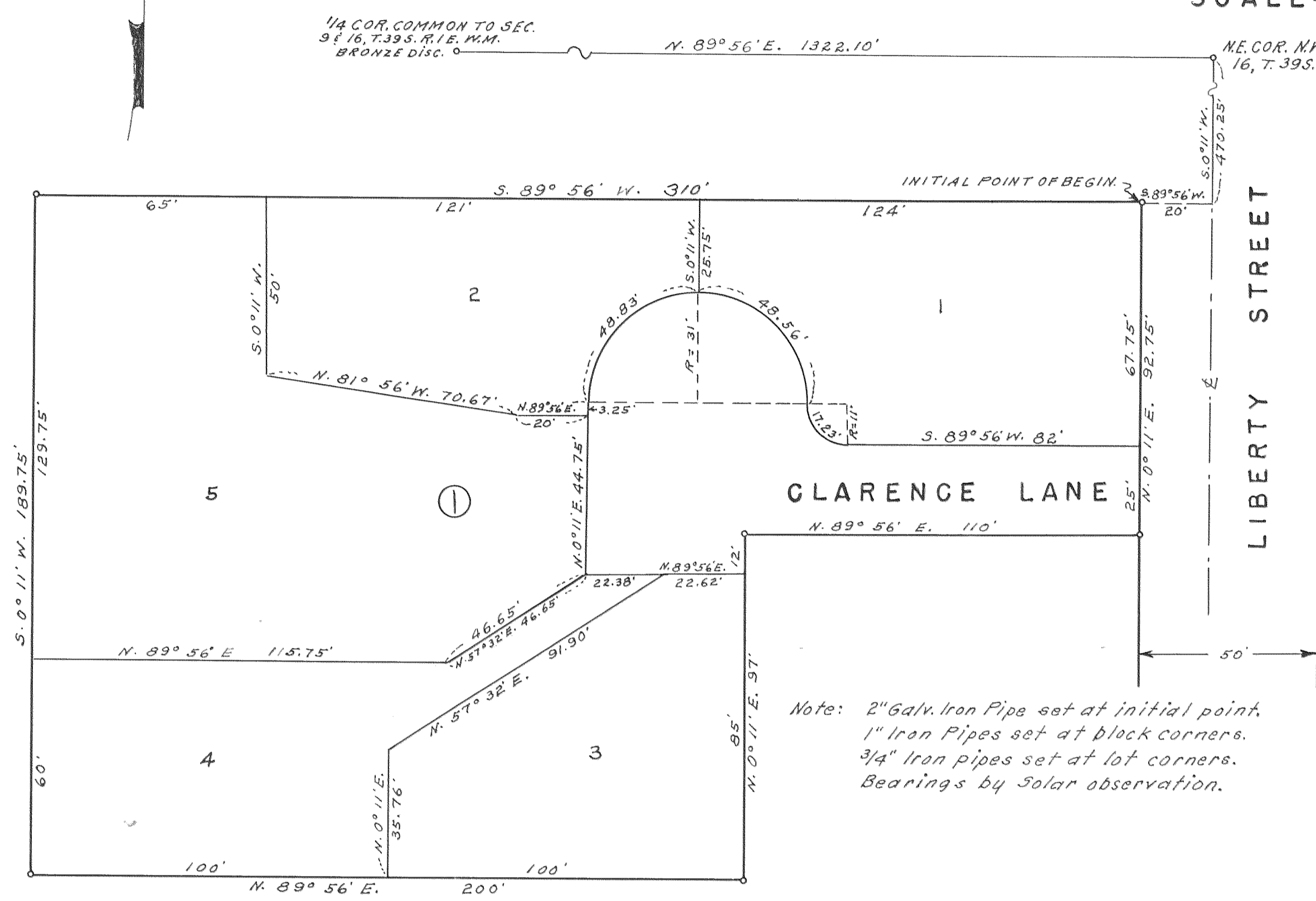
THE PINES SUBDIVISION

IN THE CITY OF ASHLAND, JACKSON COUNTY, OREGON
SECTION 16, T. 39 S. R. 1 E. W. M.

REGISTERED
OREGON
LAND SURVEYOR
L. E. Ager
MARCH 10, 1944
L. E. AGER
21

SCALE = 1" = 30'

DEDICATION



KNOW ALL MEN BY THESE PRESENTS that we, Horace Myers and Louise H. Myers are the owners in fee simple of the lands hereon described and that we have subdivided the same into lots, blocks and streets as shown hereon, and the number and size of the lots and the length of all lines are plainly set forth, and that this plat is a correct representation of the said subdivision, and we do hereby dedicate to the public for public use all streets hereon as shown and we do hereby designate said subdivision as THE PINES SUBDIVISION

IN WITNESS WHEREOF we have set our hands and seals this 20th day of February 1962.

Horace Myers
Louise H. Myers

STATE OF OREGON }
County of Jackson } ss

February 20, A.D. 1962

Personally appeared before me the above named Horace Myers and Louise H. Myers and acknowledged the foregoing instrument to be their voluntary act and deed, Before me

Robert E. Van Cleet
Notary Public for Oregon

My Commission expires the 25th day of September 1963

SURVEYOR'S CERTIFICATE

STATE OF OREGON }
County of Jackson } ss

I, L. E. Ager, a duly registered Surveyor of the State of Oregon, being first duly sworn, do hereby certify that I have correctly surveyed and marked with the proper monuments as provided by law the tract of land hereon shown and the said plat is a correct representation of the same, and the following is an accurate description of the boundary lines. Commencing at a 3/4" iron pipe at the intersection of the center lines of Ashland Street and Liberty Street in the City of Ashland, Jackson County, Oregon, said iron pipe being the northeast corner of the N.W. 1/4 of the N.E. 1/4 of Section 16, Township 39 South, Range 1 East of the Willamette Meridian, Oregon, said iron pipe bears N. 89° 56' E. 1322.10' from the North 1/4 Corner of said Section; thence S. 0° 11' W. 470.25 feet; thence S. 89° 56' W. 20.0 feet to the initial point of beginning; thence S. 89° 56' W. 310.0 feet; thence S. 0° 11' W. 189.75 feet; thence N. 89° 56' E. 200.0 feet; thence N. 0° 11' E. 97.0 feet; thence N. 89° 56' E. 110.0 feet; thence N. 0° 11' E. 92.75 feet to the initial point of beginning.

L. E. Ager
Surveyor

Subscribed and sworn to before me this 19th day of February, 1962

Lorraine A. Osburn
Notary Public for Oregon

My Commission expires the 5th day of January 1964

Filed for record this the 16th day of March 1962 at 12:00 o'clock P.M. and recorded in Volume 9 of Plats at page 2 of Records of Jackson County

Wm. Adde
County Clerk

By Deputy

I hereby certify that this tracing is an exact copy of the original plat filed with the County Clerk.

L. E. Ager
Surveyor

Examined and approved by the City of Ashland Planning Commission in regular session this 21st day of February 1962

Hilda L. Kinney Secretary
John Billings President

Examined and approved for the City of Ashland this 21 day of February 1962

E. C. Berger
City Engineer

Examined and approved this 13th day of March 1962

Ihad W. Hatton
County Assessor

All taxes paid in full to date this the 15th day of March 1962

Joseph Walsh
County Sheriff

For order of the County Court approving this plat see Volume 55, page 735, of County Commissioners Journal of Proceedings.

By Deputy County Clerk

Survey narrative to comply with ORS 209.250

For; H. Myers, 555 Liberty St. Ashland, Oregon

Purpose: Subdivison of land designated as THE PINES SUBDIVISION

Procedure: Surveyed the boundaries and the interior lots, blocks and streets as shown on map. Tied this subdivision to a brass monument set for the Quarter corner common to Sections 9 and 16, T. 39 S. R. 1 E. W.M.

Set a spike in pavement for the NE corner of Section 16 according to the ties to this corner appearing in the City of Ashland records and produced the line between this corner and the North $\frac{1}{4}$ corner as mentioned.

REGISTERED
OREGON
LAND SURVEYOR

L. E. Ager

MARCH 10, 1944
L. E. AGER
21

