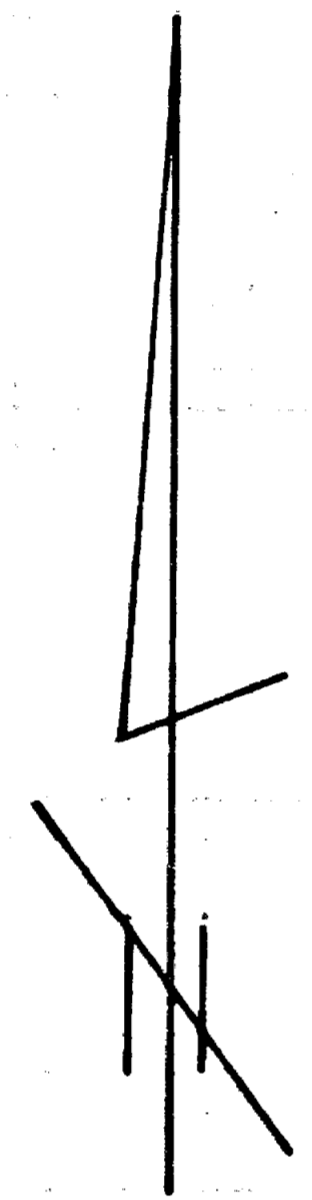
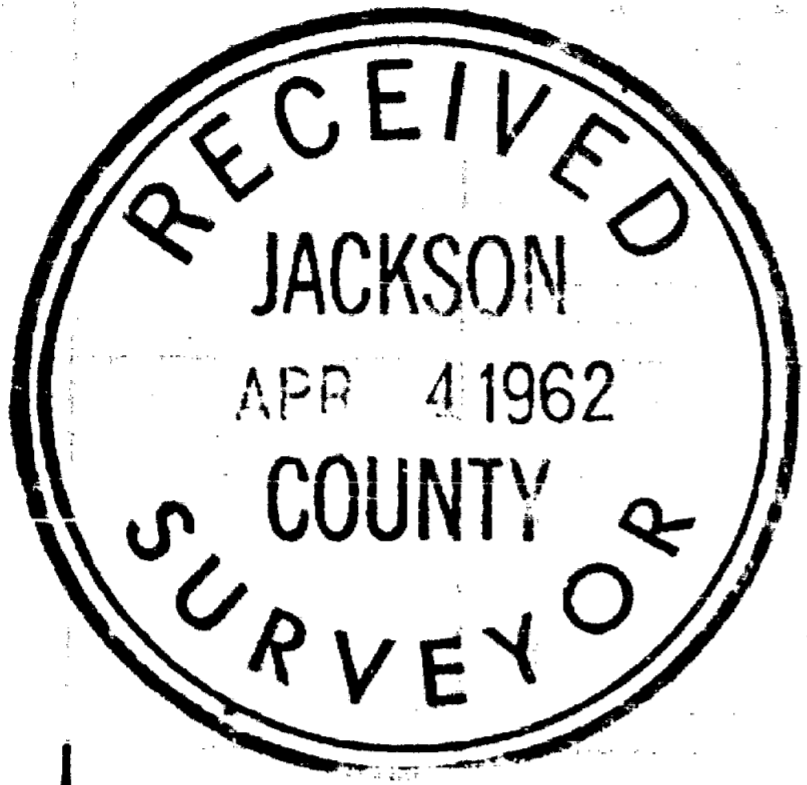
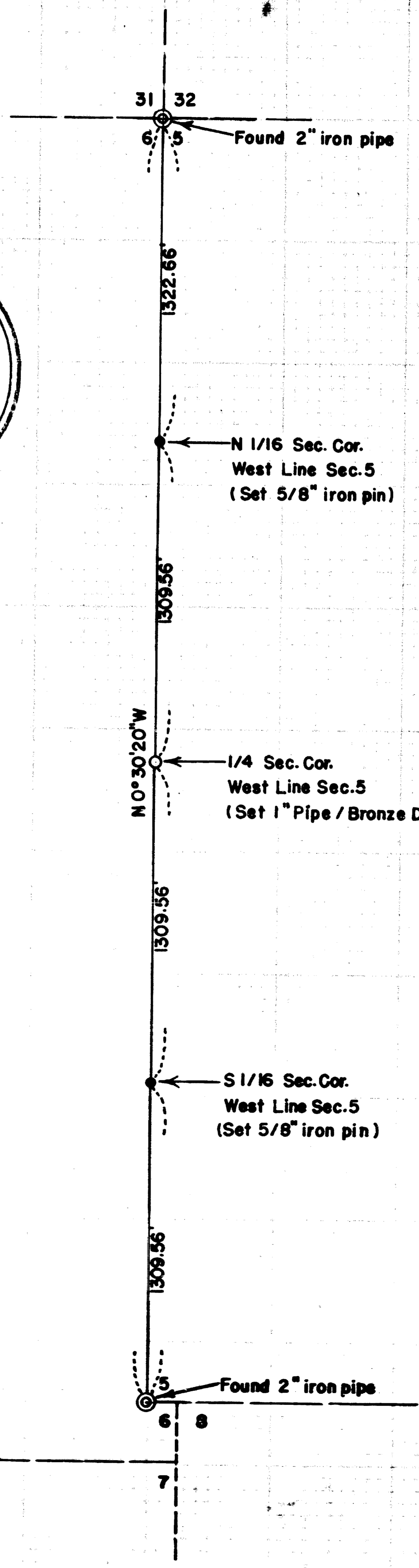


Survey For:  
JOHN M. BLACK  
Located in Sec. 5,  
T38S, R3W, W.M.  
By: Mark E. Boyden  
April, 1962



Scale 1" = 500'

REGISTERED  
**OREGON**  
LAND SURVEYOR  
*Mark E. Boyden*  
NOVEMBER 9, 1951  
MARK E. BOYDEN  
281



SURVEY NO. 1898

SURVEY NARRATIVE TO COMPLY WITH O.R.S. 209.250

FOR: John M. Black  
216 South Orange  
Medford, Oregon

PURPOSE: To monument the North 1/16, South 1/16 and West Quarter corners of Section 5 only, Township 38 South, Range 3 West, Willamette Meridian.

PROCEDURE:

Traversed the West boundary of said Section 5, between the previously established Northwest and Southwest corners thereof. No definite evidence could be found of the original Quarter corner.

Established the corners by proportionment measurement as shown, with the bearing determined by solar observation.

At the North 1/16 Section corner to Section 5 only:

Set a 5/8" x 24" iron pin for corner, from which:

A 15" Yellow Pine, scribed "RS 281 - BT" bears  
N. 28° E., 21.1 feet to the face.

A 15" Yellow Pine, scribed "RS 281 - BT" bears South  
66 $\frac{1}{4}$ ° East, 7.9 feet to the face.

At the South 1/16 corner to Section 5 only:

Set a 5/8" x 24" iron pin for corner, from which:

A 9" Fir, scribed "RS 281 - BT" bears North 55° East,  
4.5 feet to the face.

A 9" Fir, scribed "RS 281 - BT" bears South 60° East,  
13.4 feet to the face.

See the Re-establishment volume in the County Surveyor's Office  
regarding references for the Quarter corner on the West boundary of Section 5.

April 1962

