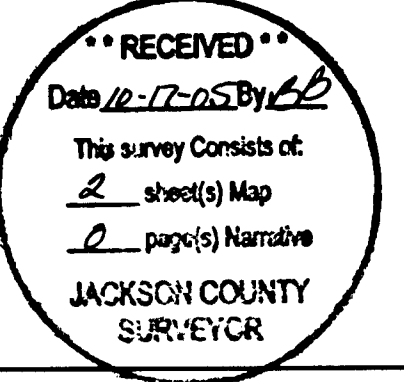


S.W. 1/4, SEC. 11, T.34 S., R.1 E., W.M.



NARRATIVE

THE PURPOSE OF THIS SURVEY WAS TO MONUMENT THE NEW CENTERLINE AND RIGHT OF WAY ACQUIRED FOR THE CONSTRUCTION OF NETHERLANDS ROAD NEAR THE BIG BUTTE CREEK (NETHERLANDS) BRIDGE. THIS SURVEY WAS MADE AT THE REQUEST OF JACKSON COUNTY ROADS AND PARKS SERVICE AND WAS DESIGNED TO PERPETUATE THE ENGINEER'S ALIGNMENT AND NEW RIGHT OF WAY FOR THE PROJECT IN CONFORMANCE WITH O.R.S. 209.155. CONSTRUCTION OF THIS PROJECT WAS COMPLETED BETWEEN MARCH 2004 AND AUGUST 2005.

REFERENCE DOCUMENTS USED: CS 13467, CS 16774, CS 13755 AND CS 13123

THIS SURVEY WAS PERFORMED IN INTERNATIONAL FEET.

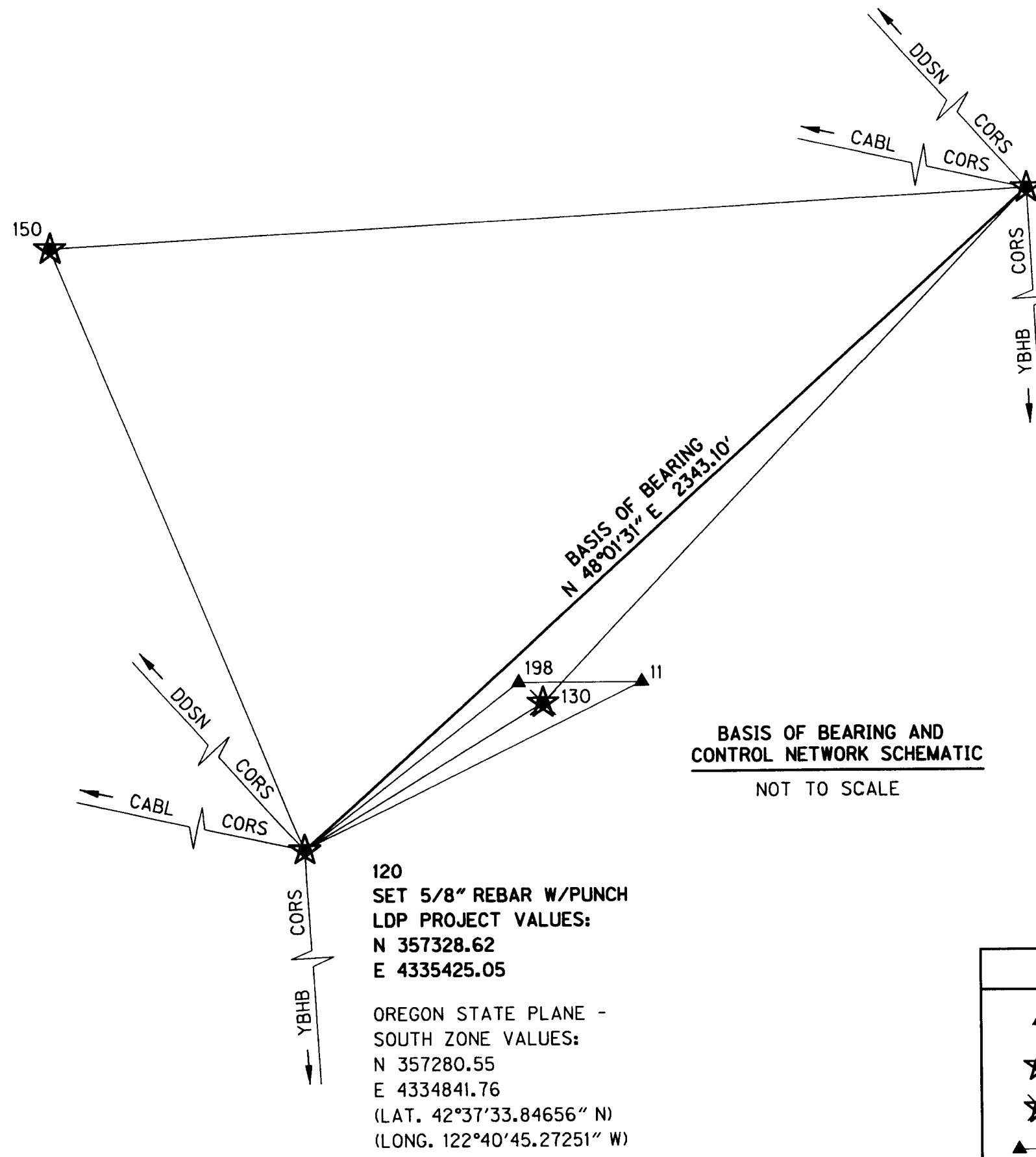
THE SURVEY EQUIPMENT CONSISTED OF ONE NIKON DTM-520 TOTAL STATION, ONE TRIMBLE 4700 GPS RECEIVER, ONE TRIMBLE 4400 GPS RECEIVER AND TWO TRIMBLE TSCI DATA COLLECTORS.

CONTROL NARRATIVE

PROJECT: BIG BUTTE (NETHERLANDS) BRIDGE
 LOCATION: JACKSON COUNTY, OREGON
 OBEC PROJECT: 114-42F
 SURVEY DATUM:
 HORIZONTAL - NAD 83 (CORS96) EPOCH 2002 (INTERNATIONAL FEET)
 VERTICAL - NAVD 88 (INTERNATIONAL FEET)

THE INITIAL CONTROL NETWORK MONUMENTATION WAS SET AND A LEAST SQUARES ADJUSTMENT WAS PERFORMED ON THE PRIMARY GPS POINTS. THE TWO POSITIONS THAT WERE HELD FIXED FOR THIS NETWORK (POINTS 100 & 120) WERE ESTABLISHED USING STATIC OBSERVATIONS FROM CORS STATIONS "CABL", "DDSN" AND "YBHB". ALL PRIMARY NETWORK POINTS WERE ADJUSTED IN OREGON STATE PLANE - SOUTH ZONE, NAD 83(CORS96) EPOCH 2002. TWO NEW MONUMENTS WERE ADDED TO THE EXISTING CONTROL NETWORK, REPLACING MONUMENTS LOST DURING THE CONSTRUCTION OF THE BIG BUTTE (NETHERLANDS) BRIDGE. A SECONDARY ADJUSTMENT WAS MADE TO THE NEW CONVENTIONALLY SET MONUMENTS AND HELD THE 2002 ADJUSTED NETWORK POINTS FIXED.

THIS SURVEY UTILIZED A LOCAL DATUM PLANE (LDP) COORDINATE SYSTEM, WHICH IS RELATIVE TO THE OREGON STATE PLANE COORDINATE SYSTEM - SOUTH ZONE, NAD83(CORS96) EPOCH 2002. TO CONVERT THE LDP COORDINATES TO THE OREGON STATE PLANE COORDINATE SYSTEM - SOUTH ZONE, NAD 83(CORS96) EPOCH 2002, MULTIPLY THE COORDINATE VALUES BY A COMBINED FACTOR OF 0.99986546.



100
 SET 5/8" REBAR W/PUNCH
 LDP PROJECT VALUES:
 N 358895.69
 E 4337167.00
 OREGON STATE PLANE -
 SOUTH ZONE VALUES:
 N 358847.40
 E 4336583.48
 (LAT. 42°37'49.76627" N)
 (LONG. 122°40'22.52582" W)

120
 SET 5/8" REBAR W/PUNCH
 LDP PROJECT VALUES:
 N 357328.62
 E 4335425.05
 OREGON STATE PLANE -
 SOUTH ZONE VALUES:
 N 357280.55
 E 4334841.76
 (LAT. 42°37'33.84656" N)
 (LONG. 122°40'45.27251" W)

LEGEND

- ▲ SET NETWORK TRAVERSE POINT
- ★ SET GPS NETWORK POINT
- ✱ DESTROYED GPS POINT
- ▲— LINES OF OBSERVATION

CONFIDENCE LEVEL LIMITS AT 1.96 SIGMA (95%)

POINT ID	SEMI MAJOR	SEMI MINOR	ORIENTATION*
11	0.04 iff.	0.03 iff.	339°23'53"
130	0.01 iff.	0.01 iff.	83°00'18"
150	0.01 iff.	0.01 iff.	79°39'36"

RESIDUALS FOR ANGLES AND DISTANCES

AT	TO	DISTANCE**	DISTANCE RESIDUAL	ANGLE RESIDUAL
11	120	893.17	0.03	0°00'01"
198	11	270.91	-0.03	0°00'13"

* NORTH AZIMUTH
 FIXED POINTS NOT SUBJECT TO LEAST SQUARES ADJUSTMENT OR CONFIDENCE LEVEL ANALYSIS:
 100, 120 & 198

** CALCULATED HORIZONTAL DISTANCE IN FEET DERIVED FROM THE MEASURED SLOPE DISTANCE

I, ANDREW D. AUSLAND, STATE THAT THIS SURVEY WAS PREPARED USING HEWLETT-PACKARD PRODUCT *51645A ON CONTINENTAL *JPC4M2 POLYESTER FILM.
Andrew D. Ausland 10/20/05
 ANDY D. AUSLAND DATE

NETWORK POINT COORDINATE TABLE

PT. ID.	LDP NORTHING	LDP EASTING	DATE	DESCRIPTION & REFERENCE DOCUMENTS
11	357759.30	4336207.46	08-10-05	SET 5/8" X 30" REBAR W/ RPC "OBEC CONTROL"
100	358895.69	4337167.00	09-10-02	SET 5/8" X 30" REBAR W/ PUNCH
120	357328.62	4335425.05	09-10-02	SET 5/8" X 30" REBAR W/ PUNCH
130	357711.06	4335970.04	09-10-02	SET 5/8" X 30" REBAR W/ PUNCH
150	358761.52	4334827.04	09-10-02	SET 5/8" X 30" REBAR W/ PUNCH
198	357726.46	4335938.57	08-10-05	SET 5/8" X 30" REBAR W/ RPC "OBEC CONTROL"
5000	357986.94	4335930.23	08-15-05	SET 5/8" X 30" REBAR W/ ALUMINUM CAP "OBEC LS 56136"
5001	357898.95	4335936.69	08-15-05	SET 5/8" X 30" REBAR W/ ALUMINUM CAP "OBEC LS 56136"
5002	357786.63	4336031.87	08-15-05	SET 5/8" X 30" REBAR W/ ALUMINUM CAP "OBEC LS 56136"
5003	357752.21	4336173.70	08-15-05	SET 5/8" X 30" REBAR W/ ALUMINUM CAP "OBEC LS 56136"
5004	357667.08	4336263.82	08-15-05	SET 5/8" X 30" REBAR W/ ALUMINUM CAP "OBEC LS 56136"



REGISTERED PROFESSIONAL LAND SURVEYOR
Andrew D. Ausland
 OREGON JULY 15, 2003
 ANDREW D. AUSLAND 56136
 RENEWAL DATE: DEC. 31, 2005
 SIGNED: *10/20/05*

i:\PROJECTS\114\114-42F\Survey\Final\114042mon.dgn
 10/19/2005

OBEC CONSULTING ENGINEERS 1335 POPLAR DRIVE
 MEDFORD, OREGON 97504
 TEL. (541) 774-5590 FAX. (541) 774-5591

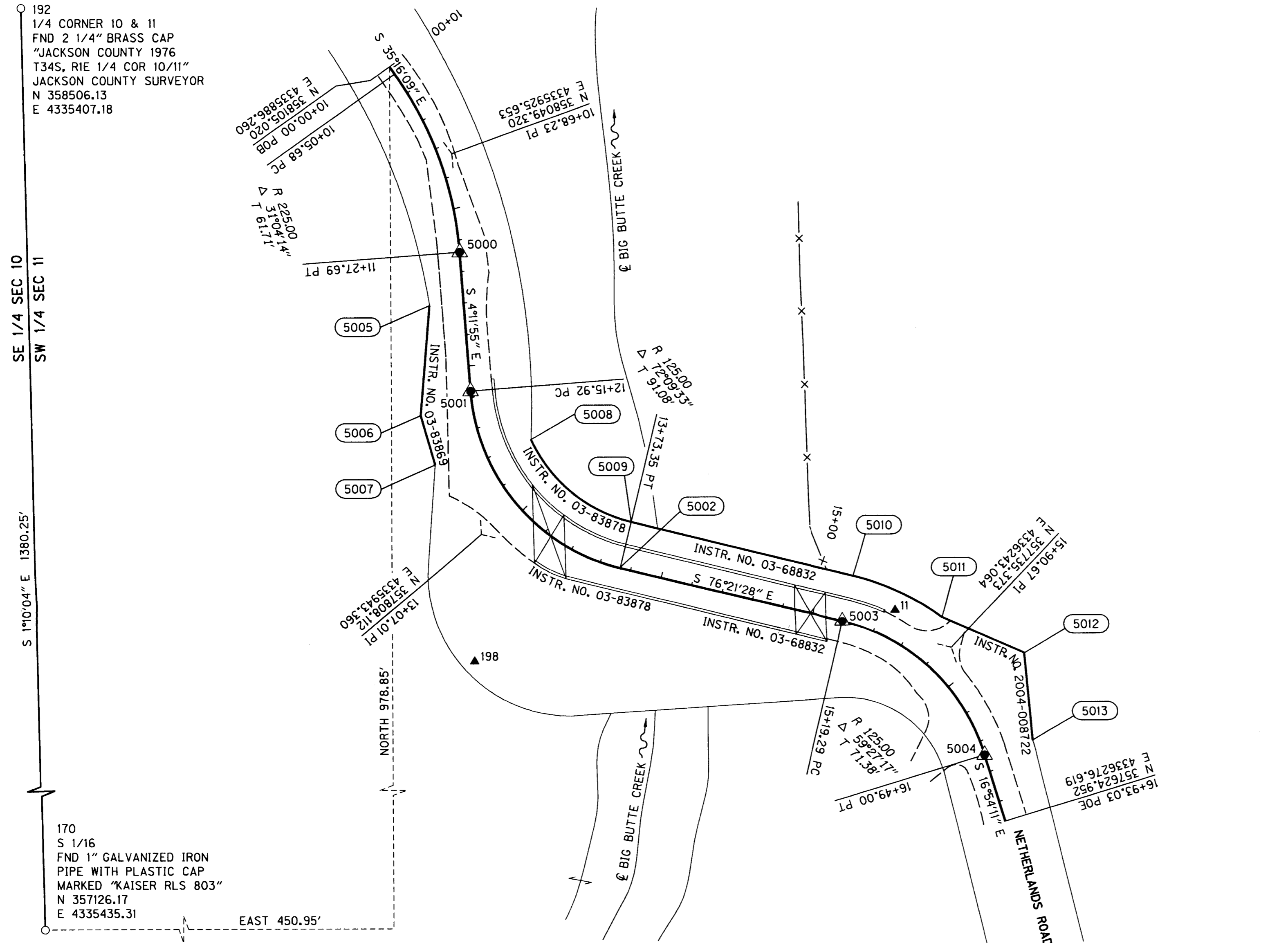
RIGHT-OF-WAY NETWORK MONUMENTATION MAP
 BIG BUTTE (NETHERLANDS) BRIDGE
 FOR JACKSON COUNTY, OREGON

OCTOBER 2005 NO SCALE

MARK L. ARMSTRONG	OBEC	DESIGNED: ANDY AUSLAND	PROJ. NO. 114-42F	SHT. 1 OF 2
APPROVED BY: CHF. SURVEYOR TITLE		DRAWN: R. ODEAR	CHK'D: M. ARMSTRONG	FILE NO. 15271S

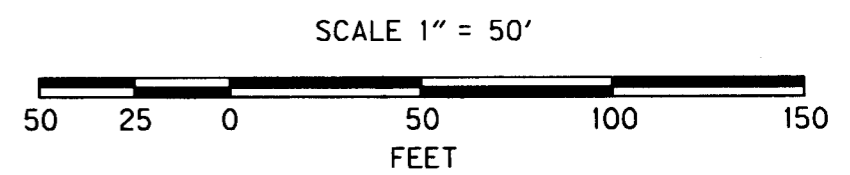
S.W. 1/4, SEC. 11, T.34 S., R.1 E., W.M.

RECEIVED
 Date 10-17-05 By *AB*
 This survey consists of:
 2 sheet(s) Map
 2 page(s) Narrative
 JACKSON COUNTY
 SURVEYOR



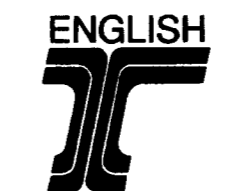
LEGEND

- SET CONTROL MONUMENT
- SET NETWORK TRAVERSE POINT
- FOUND MONUMENT
- R/W PURCHASE LINE
- EXISTING R/W LINE
- EDGE PAVEMENT
- FENCE
- CALCULATED R/W POINT



MONUMENT LIST NOTE: NO MONUMENTS SET AT R/W POINTS

PT. ID.	LDP NORTHING	LDP EASTING	STATION	OFFSET	DATE	DESCRIPTION & REFERENCE DOCUMENTS
5000	357986.94	4335930.23	11+27.69	0.00	08-15-05	SET 5/8" X 30" REBAR W/ ALUMINUM CAP "OBEC LS 56136"
5001	357898.94	4335936.69	12+15.92	0.00	08-15-05	SET 5/8" X 30" REBAR W/ ALUMINUM CAP "OBEC LS 56136"
5002	357786.62	4336031.88	13+73.34	0.00	08-15-05	CALCULATED POINT (MONUMENT NOT SET)
5003	357752.20	4336173.70	15+19.29	0.00	08-15-05	SET 5/8" X 30" REBAR W/ ALUMINUM CAP "OBEC LS 56136"
5004	357667.07	4336263.82	16+49.00	0.00	08-15-05	SET 5/8" X 30" REBAR W/ ALUMINUM CAP "OBEC LS 56136"
5005	357953.12	4335910.89	11+60.00	21.77 RT		RIGHT OF WAY POINT CALCULATED
5006	357883.47	4335904.86	12+26.27	33.42 RT		RIGHT OF WAY POINT CALCULATED
5007	357852.23	4335914.03	12+52.07	32.57 RT		RIGHT OF WAY POINT CALCULATED
5008	357868.07	4335975.20	12+61.12	30.00 LT		RIGHT OF WAY POINT CALCULATED
5009	357815.78	4336038.94	13+73.34	30.00 LT		RIGHT OF WAY POINT CALCULATED
5010	357781.35	4336180.77	15+19.29	30.00 LT		RIGHT OF WAY POINT CALCULATED
5011	357754.70	4336237.25	15+70.00	30.00 LT		RIGHT OF WAY POINT CALCULATED
5012	357731.69	4336289.60	16+10.00	52.00 LT		RIGHT OF WAY POINT CALCULATED
5013	357676.40	4336294.52	16+49.00	32.09 LT		RIGHT OF WAY POINT CALCULATED



REGISTERED PROFESSIONAL LAND SURVEYOR

Andrew D. Ausland
 OREGON
 JULY 15, 2003
 ANDREW D. AUSLAND
 56136

RENEWAL DATE: DEC. 31, 2005
 SIGNED: *10/12/05*

MARK L. ARMSTRONG OBEC
 APPROVED BY: CHF. SURVEYOR TITLE

I:\PROJECTS\114\114-42F\SURVEY\Final\114042mon.dgn
 10/19/2005

OBEC CONSULTING ENGINEERS 1335 POPLAR DRIVE
 MEDFORD, OREGON 97504
 TEL. (541) 774-5590 FAX. (541) 774-5591

RIGHT-OF-WAY NETWORK MONUMENTATION MAP
 BIG BUTTE (NETHERLANDS) BRIDGE
 FOR JACKSON COUNTY, OREGON

OCTOBER 2005 SCALE 1" = 50'

DESIGNED: ANDY AUSLAND PROJ. NO. 114-42F SHT. 2 OF 2
 DRAWN: R. ODEAR CHK'D: M. ARMSTRONG FILE NO. 15272S