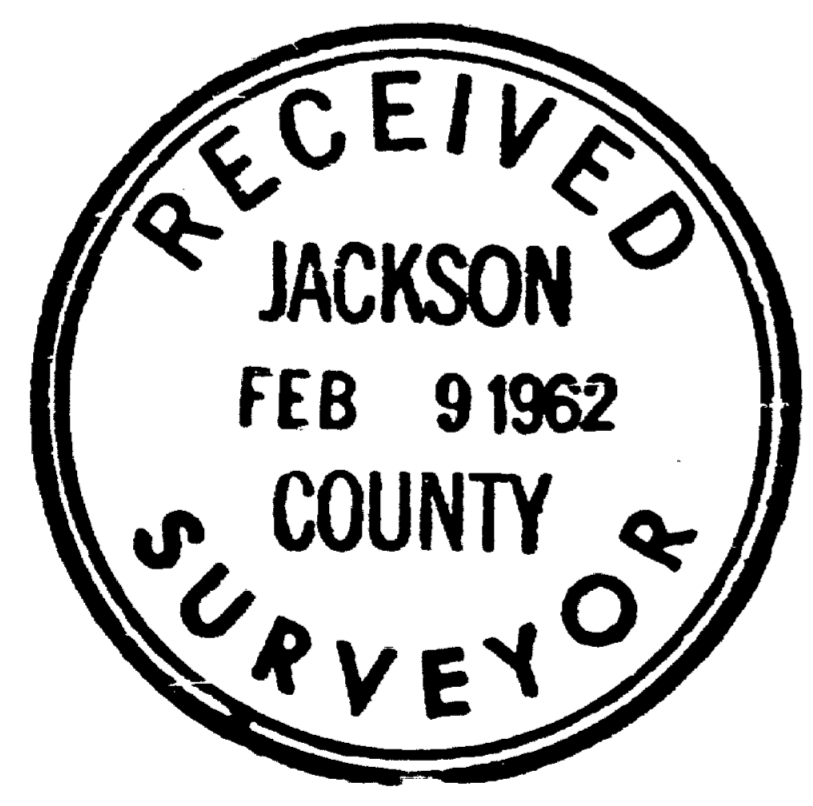
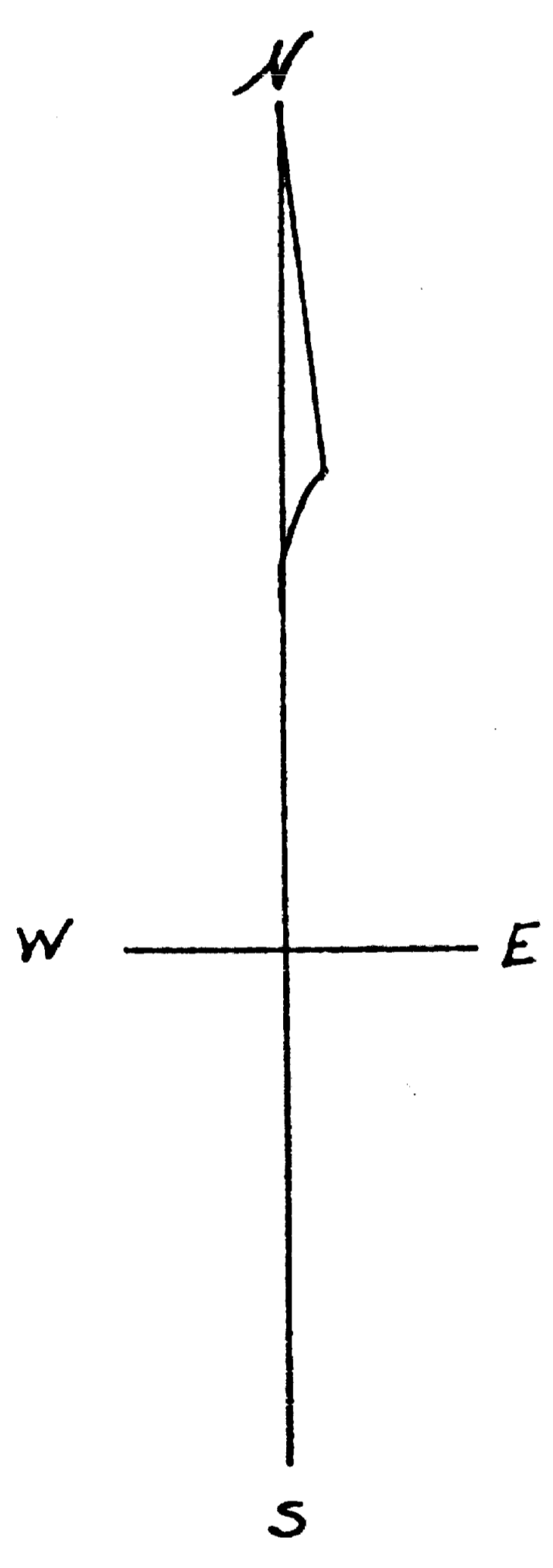
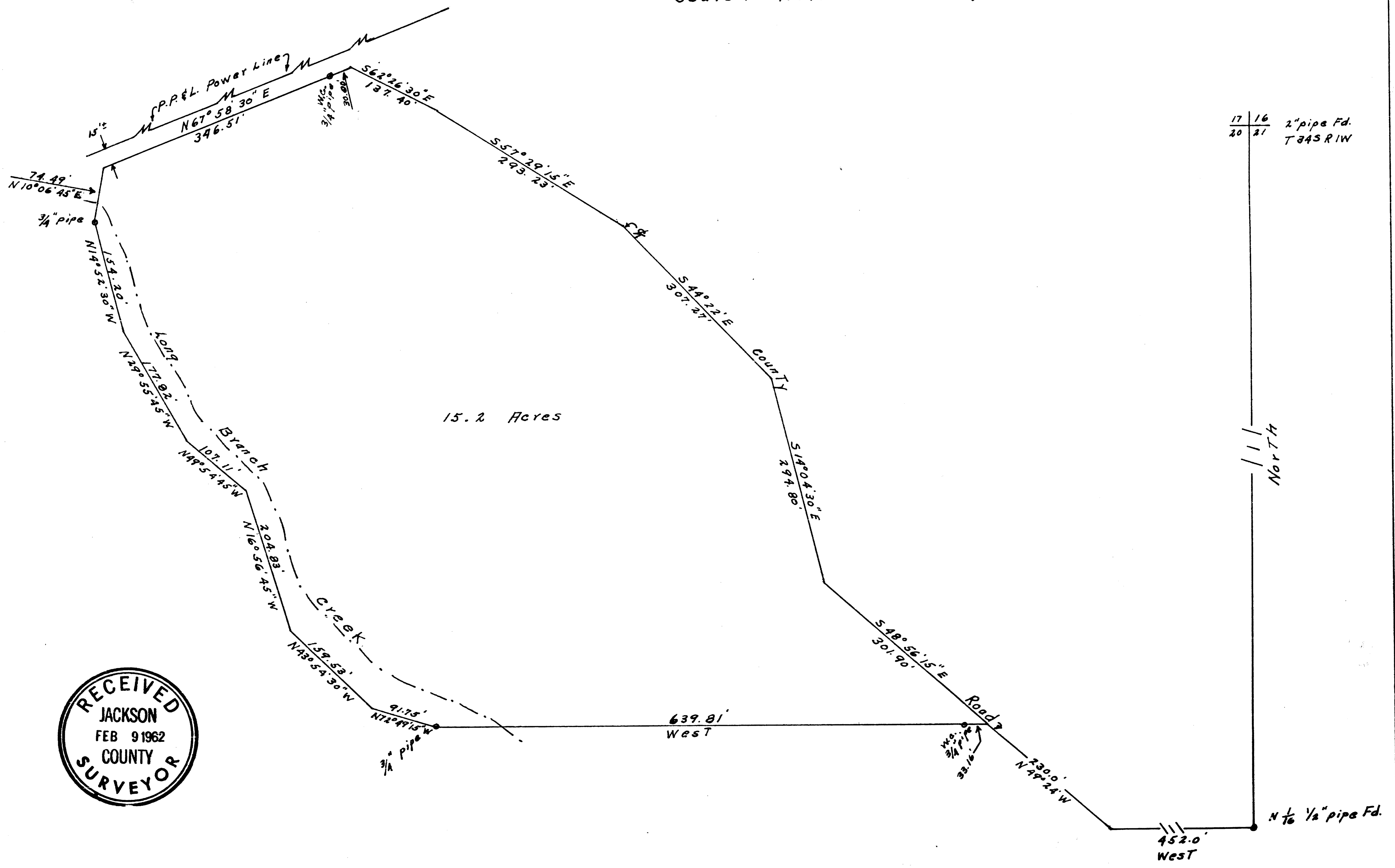


Harold L. & Velma Ricks, Property
Sec. 20 T34S R1W W.M.
Scale 1" = 100 FT. Nov. 1961



Survey Narrative to comply with
Paragraph 209.250
Oregon Revised Statutes

For:

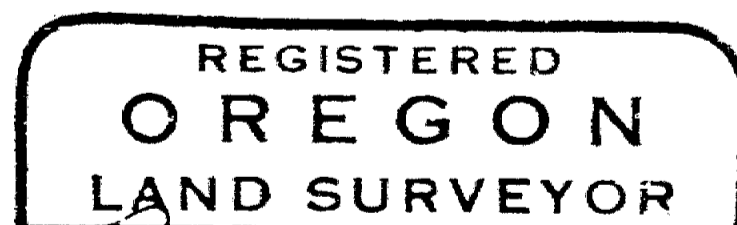
Harold L. Ricks
203 Granite St., Ashland, Oregon

Purpose:

To locate a tract of ground agreed upon by both parties bound on the south by a previous survey, a line west and approximate parallel with Long Branch Creek, a line parallel with a P.P.&L. power line and the approximate center line of a county road known as Long Branch.

Procedure:

The original owner gave me a map showing the previous survey that established the south boundary of this tract, said survey having been tied to the northeast 1/16 corner of section 20 T 34S R 1W. There were no corners to establish the south boundary so I retraced the tie to establish the said south line. Having established the south line to a desirable point on the west side of Long Branch Creek I ran a traverse along the west side of the creek as shown to a point about 15 feet from said power line, thence parallel with said line to approximate center line of county road. I used the center of the existing roadway as far as practical to make a closure at the south east corner.



Ralph J. Ellis
OCTOBER 4, 1957
RALPH J. ELLIS
416

