

MAP OF SURVEY

FOR
MARQUSS & ASSOCIATES, INC.
1120 EAST JACKSON
MEDFORD, OREGON 97504

LOCATED IN
THE NE 1/4 OF SECTION 9,
TOWNSHIP 39 SOUTH, RANGE 1 EAST, WILLAMETTE BASE AND MERIDIAN,
JACKSON COUNTY, OREGON

SURVEY NARRATIVE
TO COMPLY WITH PARAGRAPH 209.250, OREGON REVISED STATUTES

PURPOSE:

To reference and replace monuments removed by reconstruction of a portion of East Main Street in Ashland.

PROCEDURE: Prior to construction, monuments were referenced by drilling holes in the concrete curbs and setting lead plugs and tacks. After the street was paved, new monuments and cases were set. Although an inspection of the 1888 City of Ashland Map shows these monuments in a straight line between Morton Street and Morse Avenue (at the southwest corner of DLC No. 43), the existing monuments at Eighth and Alida Streets deviated from this line. The new monuments were replaced at the old monument locations. A review of surveys in this area indicates that most surveyors have used the monuments at 8th Street and Alida Street to locate the centerlines of their respective streets, but have used the monuments at Morton Street and the angle point near Morse Avenue to locate the centerline of East Main Street. The installation of a new sanitary sewer manhole at the intersection of 8th and East Main required setting two witness monuments to mark the location of the old monument.

September 8, 2005

S.W. CORNER DLC NO. 43
FD 3" BRASS CAP ON IRON PIPE
IN MONUMENT CASE (REMOVED
BY CONSTRUCTION)
REPLACED WITH 1"x30" IRON PIPE
AND 3 1/2" BRASS CAP MARKED
'CITY OF ASHLAND, SURVEY
MONUMENT, LS 2464' IN
MONUMENT CASE

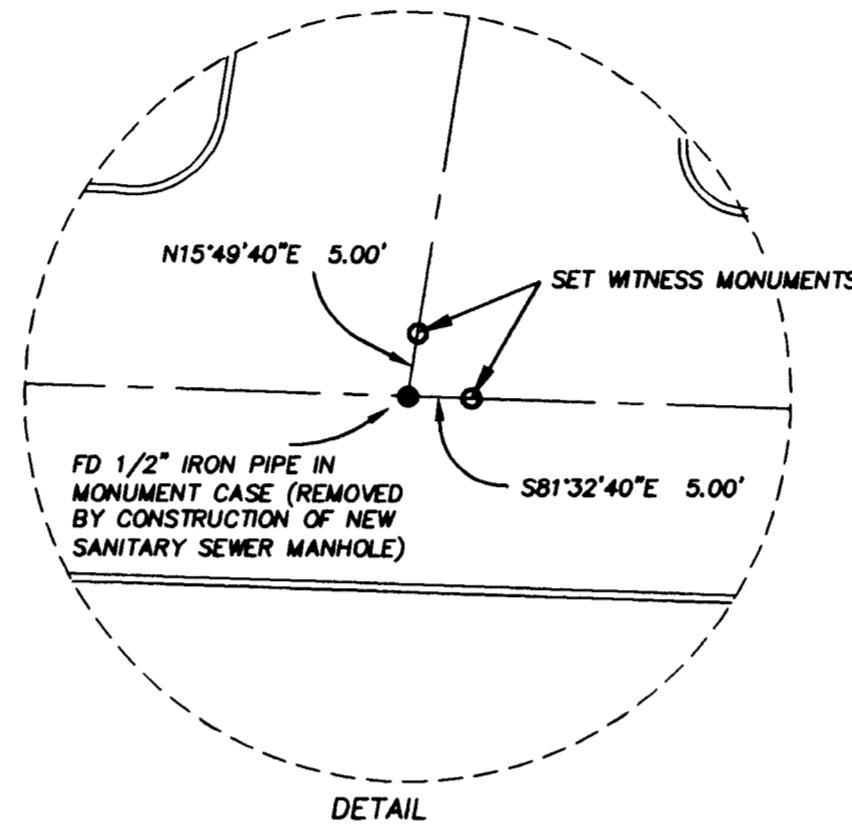


SCALE: 1" = 30'

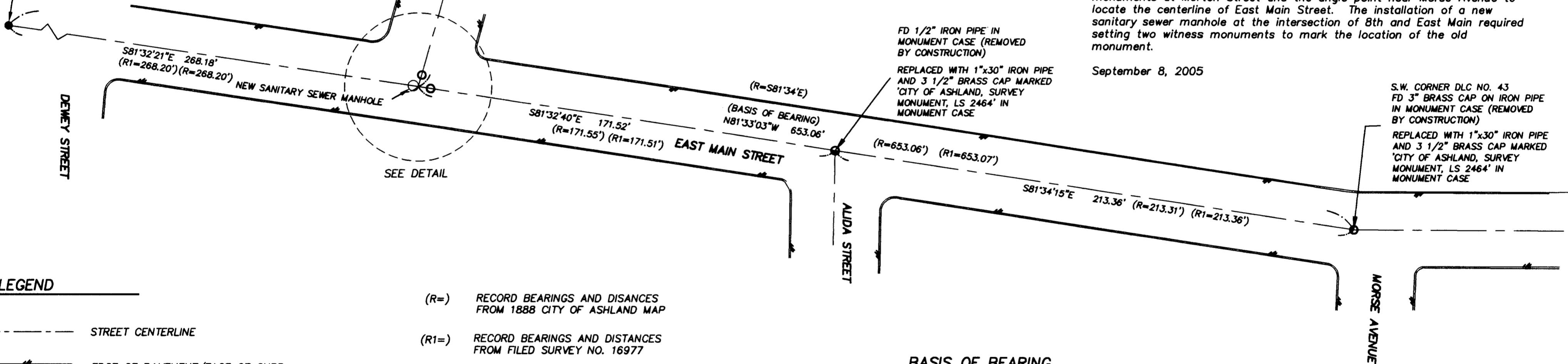
DATE OF SURVEY: JULY 19, 2005

ALL DISTANCES ARE IN FEET AND DECIMALS THEREOF

MONUMENT AT INTERSECTION
OF EIGHTH AND 'C' STREETS
FD 3" BRASS CAP IN MONUMENT
CASE MARKED:
'CITY OF ASHLAND SURVEY
MARKER, LS 759, 1992"



MONUMENT AT INTERSECTION
OF MORTON STREET AND
EAST MAIN STREET
FD 3 1/2" BRASS DISK IN
MONUMENT CASE PER FS
17501



LEGEND

- STREET CENTERLINE
- EDGE OF PAVEMENT/FACE OF CURB
- SET 1" X 30" IRON PIPE AND 3" BRASS DISK MARKED 'CITY OF ASHLAND, SURVEY MONUMENT, PLS 2462' IN MONUMENT CASE
- FOUND MONUMENT AS NOTED
- FD FOUND
- DLC DONATION LAND CLAIM

- (R=) RECORD BEARINGS AND DISTANCES FROM 1888 CITY OF ASHLAND MAP
- (R1=) RECORD BEARINGS AND DISTANCES FROM FILED SURVEY NO. 16977

NOTE: FOR MONUMENT REFERENCES SEE CITY OF ASHLAND FIELD BOOK 176, PAGES 102-104

I CERTIFY THAT THIS SURVEY WAS PREPARED WITH ARCHIVAL QUALITY MATERIALS AS REQUIRED BY ORS 209.250. SPECIFIC PRODUCTS USED ARE HEWLETT PACKARD INK #51640A ON CONTINENTAL MYLAR #PC-4M2.

S.M.
STUART M. OSMUS, PLS 2464

BASIS OF BEARING

FILED SURVEY NO. 16977. CENTERLINE OF EAST MAIN STREET BETWEEN MORTON STREET AND SOUTHWEST CORNER OF DLC NO. 43

RECEIVED
DATE 9-22-05 BY *SM*
This survey consists of:
1 sheet(s) Map
0 page(s) Narrative
JACKSON COUNTY
SURVEYOR



TERRASURVEY, INC.
PROFESSIONAL LAND SURVEYORS

274 FOURTH STREET
ASHLAND, OREGON 97520
(541) 482-6474
terrain@bisp.net