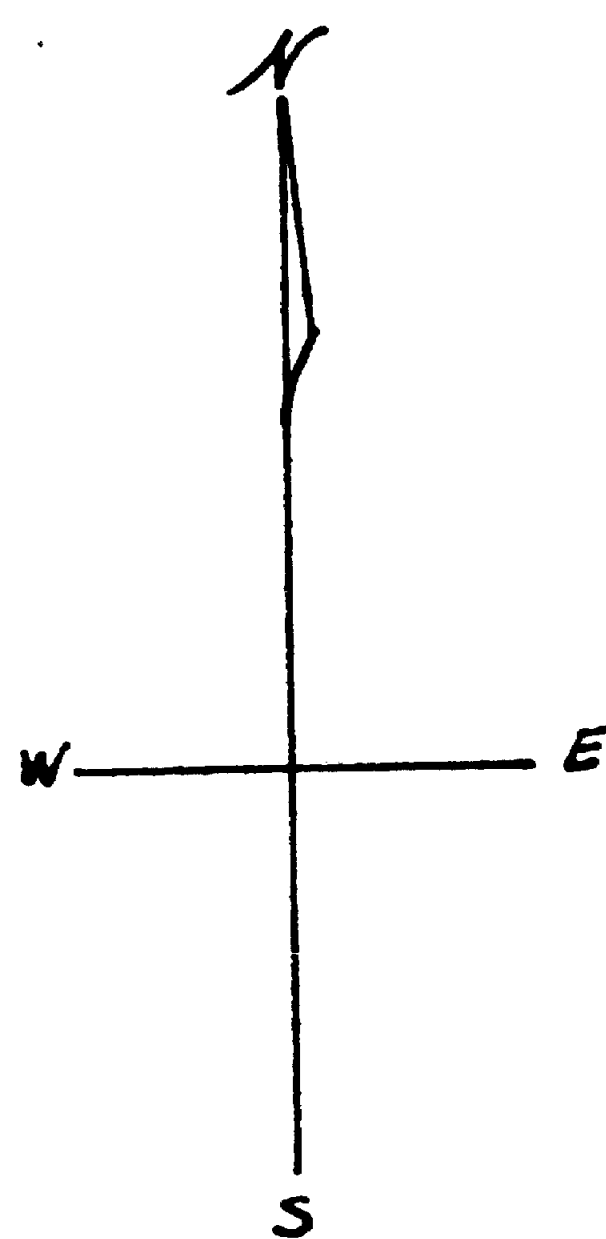


George D. & Marjorie Evans; Property

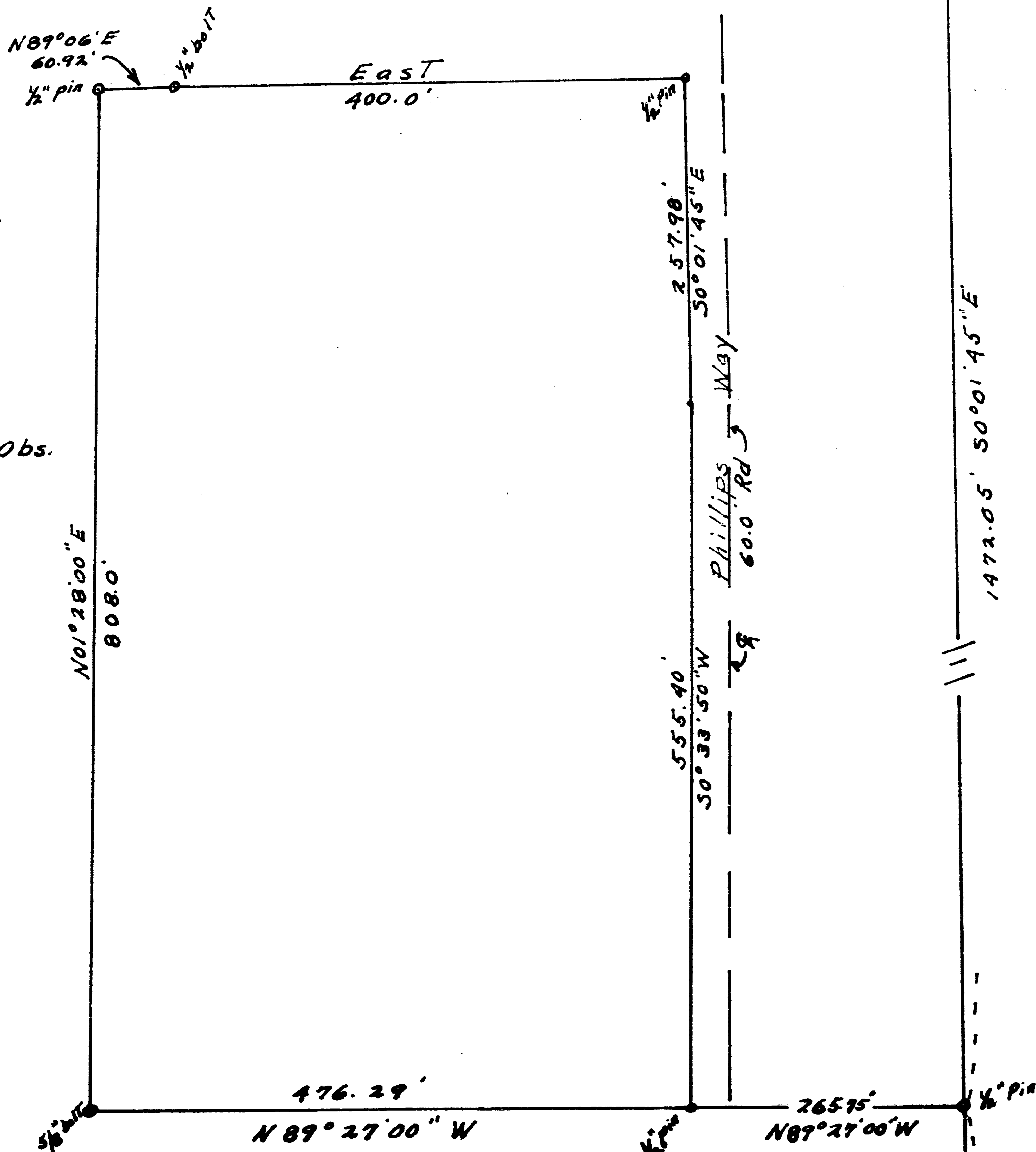
D.L.C. 45 T37S R2W. W.M.

Scale 1" = 100 FT.

Oct. 1961



Meridian by Solar Obs.



N.W. Cor. D.L.C. No. 52 Fd.  $\frac{5}{16}$ " bolt Taylor Rd.

S.W. Cor. D.L.C. No. 52 Steel Rail Fd.

REGISTERED OREGON LAND SURVEYOR  
*Ralph J. Ellis*  
 OCTOBER 4, 1957  
 RALPH J. ELLIS  
 416

Survey No. 1849

Survey Narrative to comply with  
Paragraph 209.250  
Oregon Revised Statutes

For:

George D. and Marjorie Evans  
Central Point, Oregon

Purpose:

To locate a tract of land designated by the original owner.

Procedure:

I was given a map of a survey made by Mr. Lovejoy of a larger tract of which this tract is a portion. I was shown the NW and SW corners of DLC No. 52.

I established a straight line between the above mentioned DLC corners and chained from the SW corner of DLC 52 the required distance to set a point that would establish the south line of the large tract and this tract also, and turned the required angle and chained the distance shown to set the SE corner on the west Right of Way of Phillips way and continued on to the SW corner. In doing this I checked a bolt that had been set for the SW corner of the large tract which is also the SW corner of this tract. I then turned the required angle and chained the required distance to set the NW corner as shown on the mentioned map. I then turned the required angle and chained the required distance to set a point on the north line of this tract and found a bolt that had been set previously. I then established an east line and chained 400.00 feet to establish the NE corner on the west Right of Way of Phillips way. I had previously established the east Right of way of Phillips way and established the east line of this tract parallel with the east Right of Way of Phillips Way.

