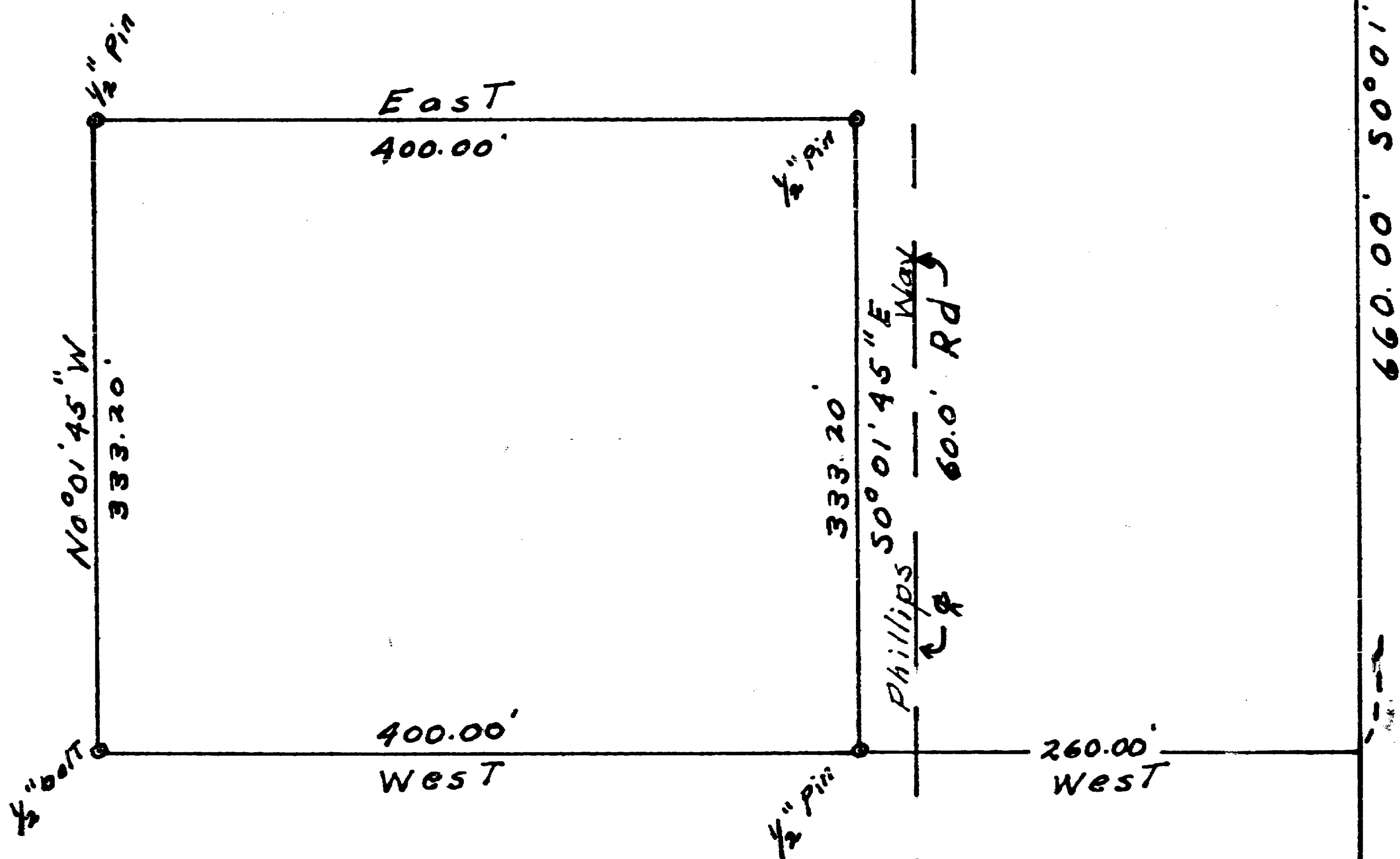
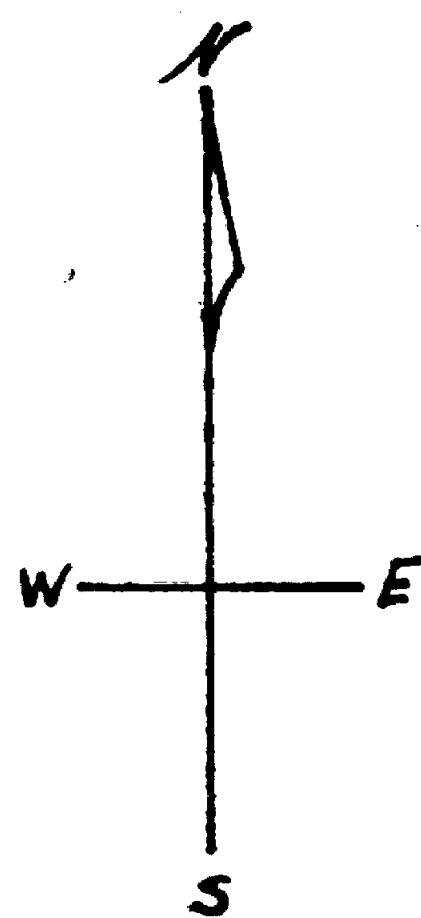


Jerome W. & Ona D. Fitzgerald, Property.

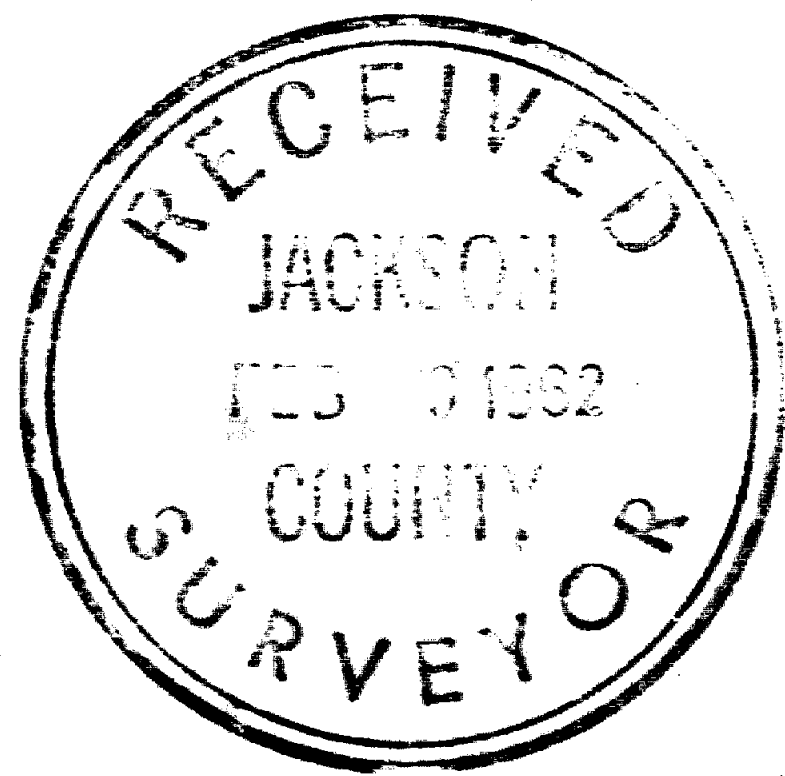
D.L.C. 45 T37S. R2W WM

Scale 1" = 100ft.

Nov. 1961



Meridian by Solar Obs.



REGISTERED
OREGON
LAND SURVEYOR
Ralph J. Ellis
OCTOBER 4, 1937
RALPH J. ELLIS
416

S.W. Cor. D.L.C.
Steel Rail

Sec 9 37-2W
DLC # 45

Survey No. 11848

Survey Narrative to comply with
Paragraph 209.250
Oregon Revised Statutes

For:

Jerome Fitzgerald
Route 2, Gold Hill, Oregon

Purpose:

To locate a lot designated by the owner, Mr. Fitzgerald.

Procedure:

I was given a map of a survey made by Mr. Lovejoy of a larger tract of which this tract is a portion. I was shown the NW and SW corners of DLC No. 52.

I had previously established a straight line between the above mentioned corners and chained south from the NW corner of DLC No. 52 the required distance of 660.00 feet and turned the required angle to give a west line, which also gave me a check on a bolt which had been set by the previous survey. I chained the required distance to set the SE corner which established the west R/W of Phillips way and continued to the above mentioned corner, this then established the west line of the property which is also the west line of the large tract. I turned the required angle to give a bearing of the west line as shown on the large tract and chained in the NW corner, turned an angle to parallel the south line and chained in the NW corner and then established the east line which is also the west right of way of Phillips way, for a closure.

