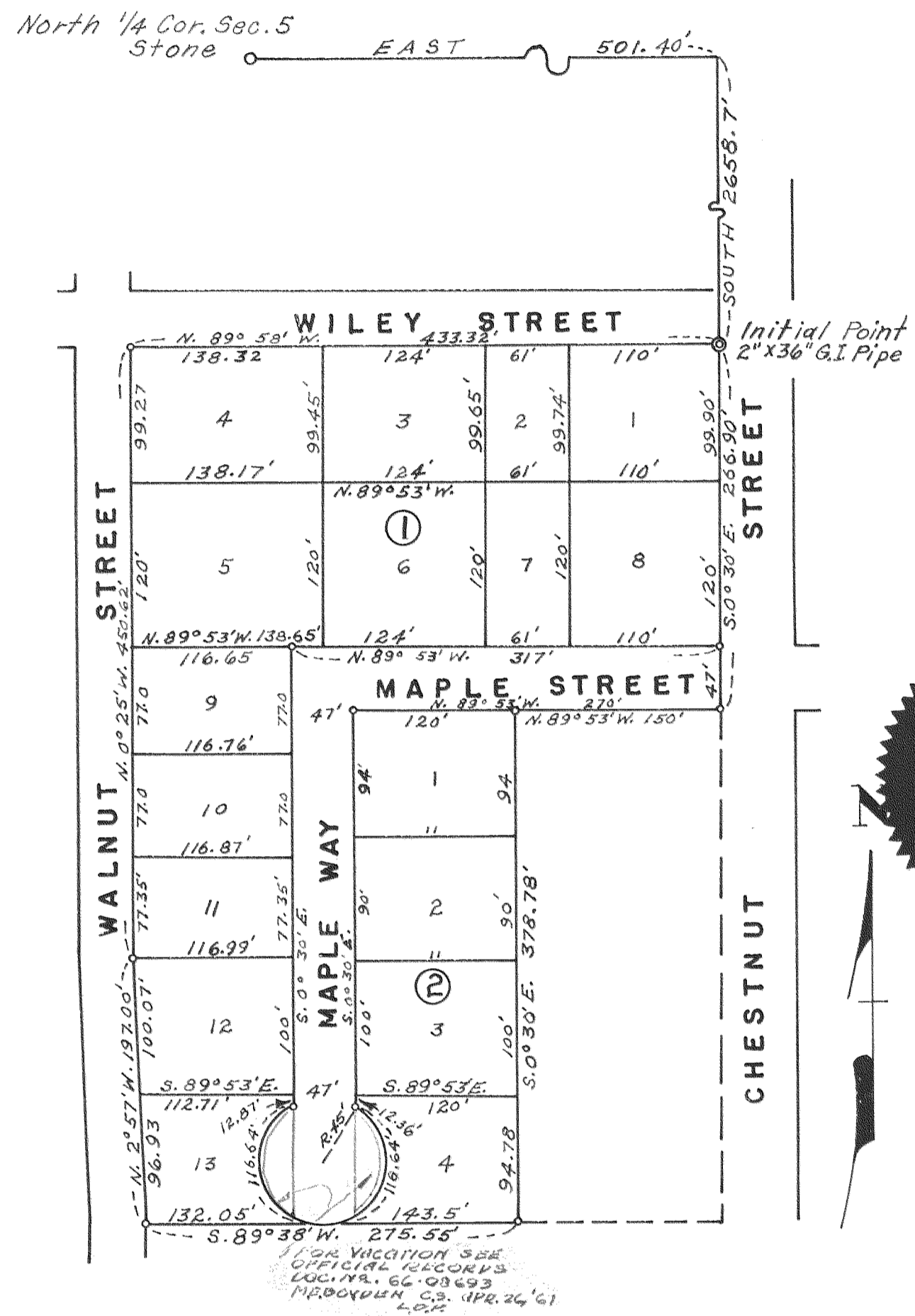


MAPLE SUBDIVISION

SECTION 5, T.39 S. R.1 E. W.M., OREGON

IN THE CITY OF ASHLAND, JACKSON CO., OREGON

SCALE: 1" = 100'

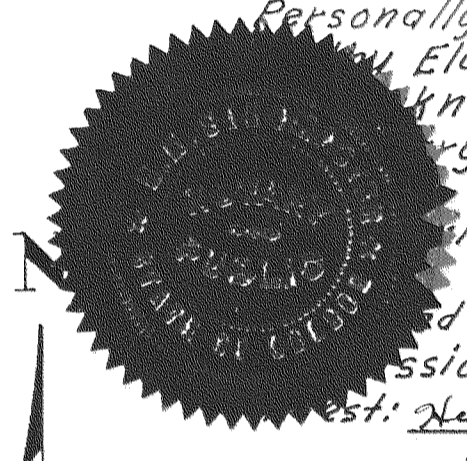


DEDICATION

KNOW ALL MEN BY THESE PRESENTS that we, Elliott F. Duffy, Dorothy Elaine Duffy, Arlie J. Sessions and Alice E. Sessions are the owners in fee simple of the lands hereon described and that we have subdivided the same into lots, blocks and streets as shown hereon, and the number and size of the lots and the length of all lines are plainly set forth, and that this plat is a correct representation of the said subdivision, and we do hereby dedicate to the public for public use all streets as shown hereon and we do hereby designate said subdivision as MAPLE SUBDIVISION.

STATE OF OREGON } ss
County of Jackson }
Elliott F. Duffy, Dorothy Elaine Duffy, Arlie J. Sessions, Alice E. Sessions
Van 30th AD 1962

Personally appeared the above named Elliott F. Duffy, Dorothy Elaine Duffy, Arlie J. Sessions and Alice E. Sessions and they acknowledged the foregoing instrument to be their free and voluntary act and deed, Before me, Ed. Dingemaster, Notary Public for Oregon.



My commission expires the 12th day of February 1963.

Witness my hand and approved by the City of Ashland Planning Commission in regular session this 8 day of January 1962.

Secretary: Helda L. Kinney
President: John A. Billings

Examined and approved for the City of Ashland this the 8 day of January 1962.

E. C. Reed
City Engineer

Examined and approved this 31 day of January 1962.

Thad W. Hutton
County Assessor

All taxes paid in full to date this the 31st day of January 1962.

W. J. Walsh
County Sheriff

For Order of the County Court approving this plat see Volume 55 page 609, of County Commissioner's Journal of Proceedings.

M. M. Adels
County Clerk.

By _____
Deputy

531349
Filed for record this the 2nd day of February 1962 at 12:14 o'clock P.M. and recorded in Volume 8 of Plats at page 61 of Records of Jackson County

M. M. Adels
County Clerk

By _____
Deputy

SURVEYOR'S CERTIFICATE

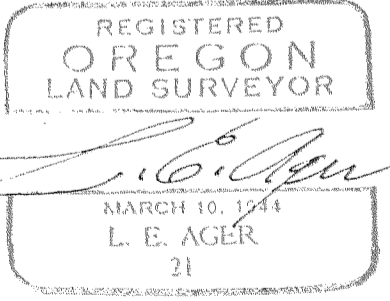
STATE OF OREGON } ss
County of Jackson }
I, L. E. Ager a duly registered Surveyor of the State of Oregon, being first duly sworn, do hereby certify that I have correctly surveyed and marked with proper monuments as provided by law the tract of land hereon shown and the said plat is a correct representation of the same, and the following is an accurate description of the boundary lines: Beginning at the point of intersection of the West line of Chestnut Street with the South line of Wiley Street in the City of Ashland, Jackson County, Oregon, which point bears 501.4 feet East and 2658.7 feet South of the North quarter corner of Section 5, Township 39 South, Range 1 East, W.M. Oregon; thence along the West side line of Chestnut Street S. 0° 30' E. 266.90 feet; thence N. 89° 53' W. 150.0 feet; thence S. 0° 30' E. 378.78 feet to the South line of tract described in Volume 378, Page 287, Deed Records of Jackson County, Oregon; thence (West) on solar bearing S. 89° 38' W. along the South line of said tract, and the South line of tract described in Volume 393, Page 214, said Deed Records, 275.55 feet to the East line of Walnut Street; thence along said Street N. 2° 57' W. 197.0 feet; thence N. 0° 25' W. 450.62 feet to the South line of Wiley Street; thence S. 89° 58' E. along said Street 433.32 feet to the point of beginning.

Subscribed and sworn to before me this 22 day of Sept. 1961

Wm. E. Anworth
Notary Public for Oregon
My Commission Expires the 4th day of October 1961

I hereby certify that this tracing is an exact copy of the original plat filed with the County Clerk

L. E. Ager
Surveyor



Survey narrative to comply with ORS 209.250, Oregon State Law of 1947

For: Elliott Duffy, 571 Chestnut St. and Arlie Sessions,
527 Chestnut St. Ashland, Oregon

Purpose: To plat a tract of land into Blocks, Lots and Streets
in Section 5, T. 39 S. R. 1 E. W.M., in the City of
Ashland, Oregon, Designated as MAPLE SUBDIVISION, bordered
by Chestnut Street on the East, Wiley St. on the North
and Walnut Street on the West.

Procedure: Began the initial point of survey at the intersection of
the South line of Wiley Street and the West line of
Chestnut Street and subdivided the combined ownerships
into Blocks, Lots and Streets according to the bearings
and distances shown on the plat.

I tied the initial point to a stone monument designating
the North Quarter corner of Section 5, this stone has been
used as the true corner over several years and is vouched
for by John Billings, owner of adjacent lands.

REGISTERED
OREGON
LAND SURVEYOR

L. E. Ager
MARCH 10, 1944

L. E. AGER

21

