

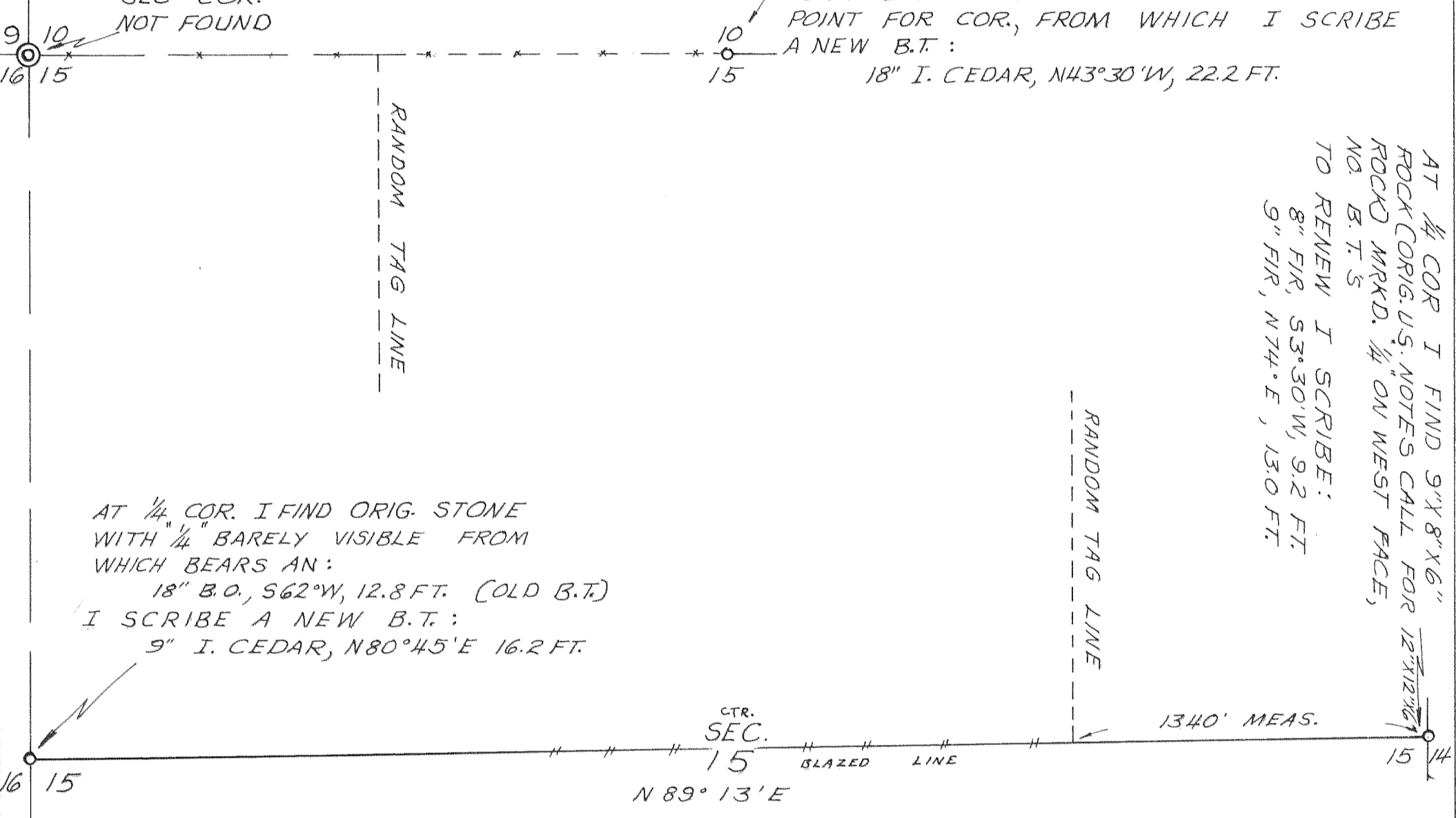


SEC COR.
NOT FOUND

AT 1/4 COR. I FIND ORIG. B.T.
10" B.O. (NOW 12") S30°W, 33 LKS. (IN GOOD SHAPE)
10" B.O. N5°W, 12 LKS. (DOWN AND ROTTED)
ORIG. U.S. NOTES CALLED FOR ROCK AT
COR. POINT. (NOT FOUND)
TO RENEW I RAISED A MOUND OF STONE AT
POINT FOR COR., FROM WHICH I SCRIBE
A NEW B.T.:
18" I. CEDAR, N43°30'W, 22.2 FT.

AT 1/4 COR I FIND 9"X8"X6"
ROCK (ORIG. U.S. NOTES CALL FOR 12"X12"X6")
ROCK MKRD. 1/4 ON WEST FACE,
NO. B.T. 5
TO RENEW I SCRIBE:
8" FIR, S3°30'W, 9.2 FT.
9" FIR, N74°E, 13.0 FT.

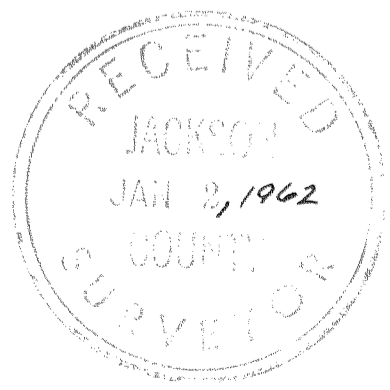
AT 1/4 COR. I FIND ORIG. STONE
WITH 1/4" BARELY VISIBLE FROM
WHICH BEARS AN:
18" B.O., S62°W, 12.8 FT. (OLD B.T.)
I SCRIBE A NEW B.T.:
9" I. CEDAR, N80°45'E 16.2 FT.



NOTE: BEARINGS DETERMINED BY YOUNG & SONS
SOLAR COMPASS

CORNERS RENEWED AND RANDOM LINES RUN IN SEC. 15, T37S, R2E, W.M. SCALE 1 INCH = 500 FEET

APRIL 15, 1961 Drawn BY R.D.G. R. M. THOMPSON
DONE FOR: TRU-CUT STUDS, INC.
ROGUE RIVER, ORE.



April 29, 1961

Survey Narrative to Comply With Par. 209-250, O.R.S. for Survey
in a Portion of Section 15, T37S, R2E, W.M.

Done for: Tru-Cut Studs. Inc., Rogue River, Ore.

Purpose: To check Cutting Lines for Tru-Cut Studs Ownership.

Procedure:

An attempt to locate the Northwest Corner of Section 15 being unsuccessful, I go to the North Quarter Corner of Sec. 15, finding and renewing the original corner (see attached map). Thence I run West 2640.0 feet, but save for an East-West fence along this line, am not able to uncover sufficient evidence to establish location of Northwest Section Corner.

I go to West Quarter Corner of Section 15, finding original corner, and renewing same (see map). Thence I run East to the East Quarter Corner of Section 15, finding the original stone and renewing the corner (see map). I blaze the timbered portion of the East-West center line (as shown on map). The true bearing of this line is $N89^{\circ}13'E$.

Robert M. Thompson
Robert M. Thompson

