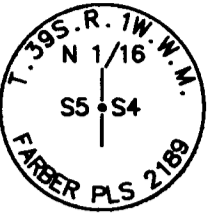
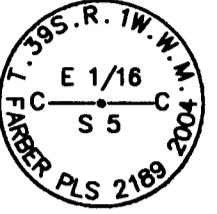


CORNER DETAILS FOR SECTION 5



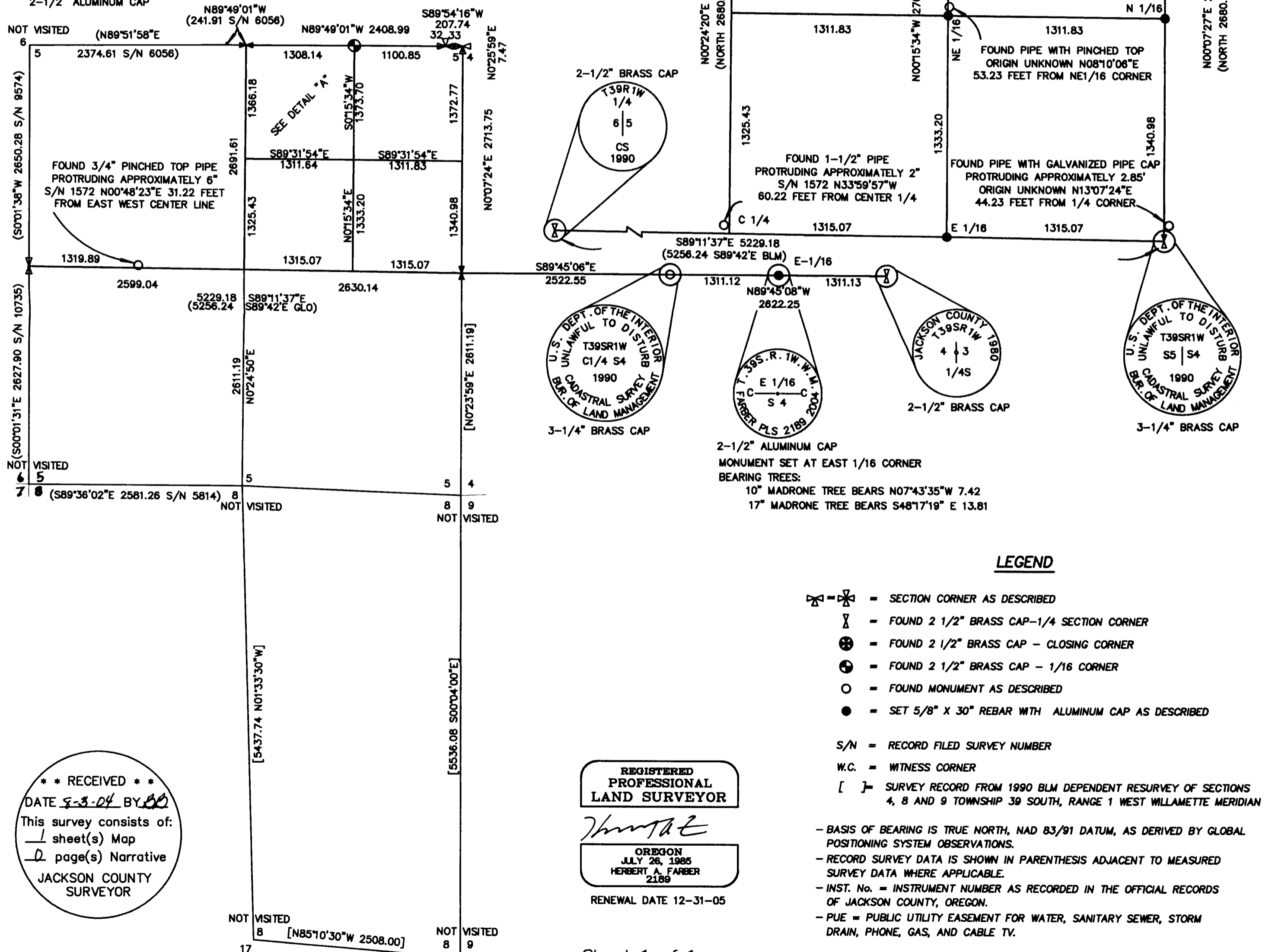
MONUMENT SET AT NORTH 1/16 CORNER
BEARING TREES:
9" FIR TREE BEARS S77°42'23"W 36.57
13" MADRONE TREE BEARS N81°07'32"E 60.84



MONUMENT SET AT CENTER EAST 1/16 CORNER
BEARING TREES:
15" FIR TREE BEARS N41°07'24"W 3.77
9" FIR TREE BEARS S20°38'04"E 9.79



MONUMENT SET AT NORTHEAST 1/16 CORNER
BEARING TREES:
12" MADRONE TREE BEARS N72°21'05"W 5.99
10" MADRONE TREE BEARS S07°10'47"E 12.81



MAP OF SURVEY
located in the
NORTHEAST ONE QUARTER OF SECTION 5,
TOWNSHIP 39 SOUTH, RANGE 1 WEST,
WILLAMETTE MERIDIAN, JACKSON COUNTY, OREGON
for
HOLTON CREEK TREE FARM, LLC
1867 HOLTON CREEK ROAD
TALENT, OREGON 97540

**SURVEY NARRATIVE
TO COMPLY WITH O.R.S. 209.250**

PURPOSE:
TO RECOVER EXISTING SURVEY MONUMENTS AND ESTABLISH MONUMENTS AT THE CE 1/16 OF SECTION 4 AND THE N 1/16 OF SECTION 4-5, THE NE 1/16 OF SECTION 5 AND THE CENTER EAST 1/16 OF SECTION 5, BEING CORNERS OF THE PROPERTY DESCRIBED IN INSTRUMENT NO. 2004-023029 OF THE OFFICIAL RECORDS OF JACKSON COUNTY.

PROCEDURE:
USING GPS AND TERRESTRIAL INSTRUMENTS I TIED THE MONUMENTS AS SHOWN HEREON. USING THE TIED POSITIONS OF THE NORTH, EAST AND WEST QUARTER CORNERS, THE TIED POSITION OF THE NORTHEAST CORNER OF SECTION 5 AND THE BLM RECORD POSITION OF THE SOUTH QUARTER CORNER OF SECTION 5, I SUBDIVIDED THE NORTHEAST CORNER OF SAID SECTION ACCORDING TO THE PROCEDURES OUTLINED IN THE 1973 BLM SURVEYING MANUAL. I COMPUTED THE POSITION OF THE SOUTH QUARTER CORNER BY USING BLM PLAT RECORD TO TRAVERSE FROM THE EAST QUARTER CORNER SOUTH ALONG THE EAST LINE OF SECTION 5 TO THE NORTHEAST CORNER OF SECTION 8, THENCE ALONG THE EAST LINE OF SECTION 8 TO THE SOUTHEAST CORNER; THENCE ALONG SOUTH LINE OF SECTION 8 TO THE SOUTH QUARTER CORNER; THENCE NORTH TO THE SOUTH QUARTER CORNER OF SECTION 5. I CHECKED THE POSITION BY TRAVERSING FROM THE WEST QUARTER CORNER SOUTH ALONG THE SECTION LINE USING THE RECORD BEARINGS AND DISTANCES FROM SURVEY NUMBER 10735 AND 9574 THENCE WEST ALONG THE SOUTH LINE OF SAID SECTION RECORD BEARING AND DISTANCE FROM SURVEY NUMBER 5814. I FOUND THE BLM POSITION ACCEPTABLE FOR THIS SURVEY.

THE PIPES FOUND ALONG THE SOUTH LINE OF THE NORTH HALF OF SECTION 5 WERE NOT ACCEPTED. AFTER ANALYSIS, THE PIPE FOUND NORTH OF THE CENTER WEST 1/16 CORNER (RP TO CENTER WEST 1/7) AND THE PIPE FOUND NORTH OF THE CENTER 1/4, BOTH SET BY AGER ON SURVEY NUMBER 1572 ARE SUSPECTED TO BE STUBBED IN FROM THE NORTH 1/4 CORNER. THIS SURVEY HAS TWO DISCREPANCIES THAT LED ME TO THIS CONCLUSION. THIS FIRST IS THE EAST 1/4 CORNER IS LABELED AS STONE MONUMENT AND THERE IS NO RECORD OF A STONE MONUMENT BEING SET AT THAT LOCATION IN THE GLO NOTES. THE SECOND IS THE POSITION OF THE WEST 1/4 CORNER AND A SIGNIFICANT ANGLE BREAK IN THE EAST-WEST CENTERLINE TO GET BACK TO THE WEST 1/4 FROM THE RP FOR THE CENTER WEST 1/16. AGER SHOWS THIS 1/4 CORNER TO BE 2698.10 FEET FROM THE NORTHWEST SECTION CORNER. SWAIN MEASURED THIS DISTANCE TO BE 2650.28 FEET IN SURVEY NUMBER 9574. THE PIPE FOUND NORTH OF THE EAST 1/4 CORNER IS NOT OF RECORD AND WAS REJECTED BY THE BLM WHEN THEY CONDUCTED THEIR RESURVEY IN 1990. I DISCUSSED THIS PIPE WITH GEORGE BURRELL (PLS 638). MR. BURRELL TESTIFIES TO CONDUCTING A DILIGENT SEARCH FOR SAID WEST 1/4 CORNER IN 1988 AND FOUND NO EVIDENCE. THIS MEANS THE PIPE WAS PLACED THERE SOMETIME BETWEEN 1988 AND 1990. USING THIS INFORMATION I DECIDED TO REJECT THE POSITION OF THIS PIPE. MR. BURRELL ALSO AGREES THAT THE PIPES FROM S/N 1572 WERE MOST LIKELY STUBBED IN FROM THE NORTH 1/4 CORNER.

TO ESTABLISH THE EAST 1/16 CORNER OF SECTION 4 I PLACED IT MIDWAY BETWEEN THE EAST 1/4 CORNER AND THE CENTER 1/4 AS SHOWN HEREON.

LEGEND

- ⊗ = SECTION CORNER AS DESCRIBED
- ⊗ = FOUND 2 1/2" BRASS CAP-1/4 SECTION CORNER
- ⊗ = FOUND 2 1/2" BRASS CAP - CLOSING CORNER
- ⊗ = FOUND 2 1/2" BRASS CAP - 1/16 CORNER
- = FOUND MONUMENT AS DESCRIBED
- = SET 5/8" X 30" REBAR WITH ALUMINUM CAP AS DESCRIBED

S/N = RECORD FILED SURVEY NUMBER
W.C. = WITNESS CORNER
[] = SURVEY RECORD FROM 1990 BLM DEPENDENT RESURVEY OF SECTIONS 4, 8 AND 9 TOWNSHIP 39 SOUTH, RANGE 1 WEST WILLAMETTE MERIDIAN

- BASIS OF BEARING IS TRUE NORTH, NAD 83/91 DATUM, AS DERIVED BY GLOBAL POSITIONING SYSTEM OBSERVATIONS.
- RECORD SURVEY DATA IS SHOWN IN PARENTHESIS ADJACENT TO MEASURED SURVEY DATA WHERE APPLICABLE.
- INST. No. = INSTRUMENT NUMBER AS RECORDED IN THE OFFICIAL RECORDS OF JACKSON COUNTY, OREGON.
- PUE = PUBLIC UTILITY EASEMENT FOR WATER, SANITARY SEWER, STORM DRAIN, PHONE, GAS, AND CABLE TV.

REGISTERED PROFESSIONAL LAND SURVEYOR

HERBERT A. FABER
OREGON JULY 26, 1985
HERBERT A. FABER 2189

RENEWAL DATE 12-31-05

** RECEIVED **
DATE 8-3-04 BY [Signature]
This survey consists of:
1 sheet(s) Map
2 page(s) Narrative
JACKSON COUNTY SURVEYOR

Surveyed by:
FARBER & SONS, INC.
dba FARBER SURVEYING
(541) 664-5599
PO BOX 5286
431 OAK STREET
CENTRAL POINT, OREGON 97502

SCALE: 1" = 1000'
0' 500' 1000' 2000'
DATE: AUGUST 2, 2004
JOB NO.: 1243-04