

POST-MONUMENTATION MAP
 GENEVA PARK TOWNHOMES SUBDIVISION, A PLANNED COMMUNITY, PHASE 2

Located in the N.E. 1/4 of Sec. 9, T.39S, R.1E., W.M.
 City of Ashland
 Jackson County, Oregon

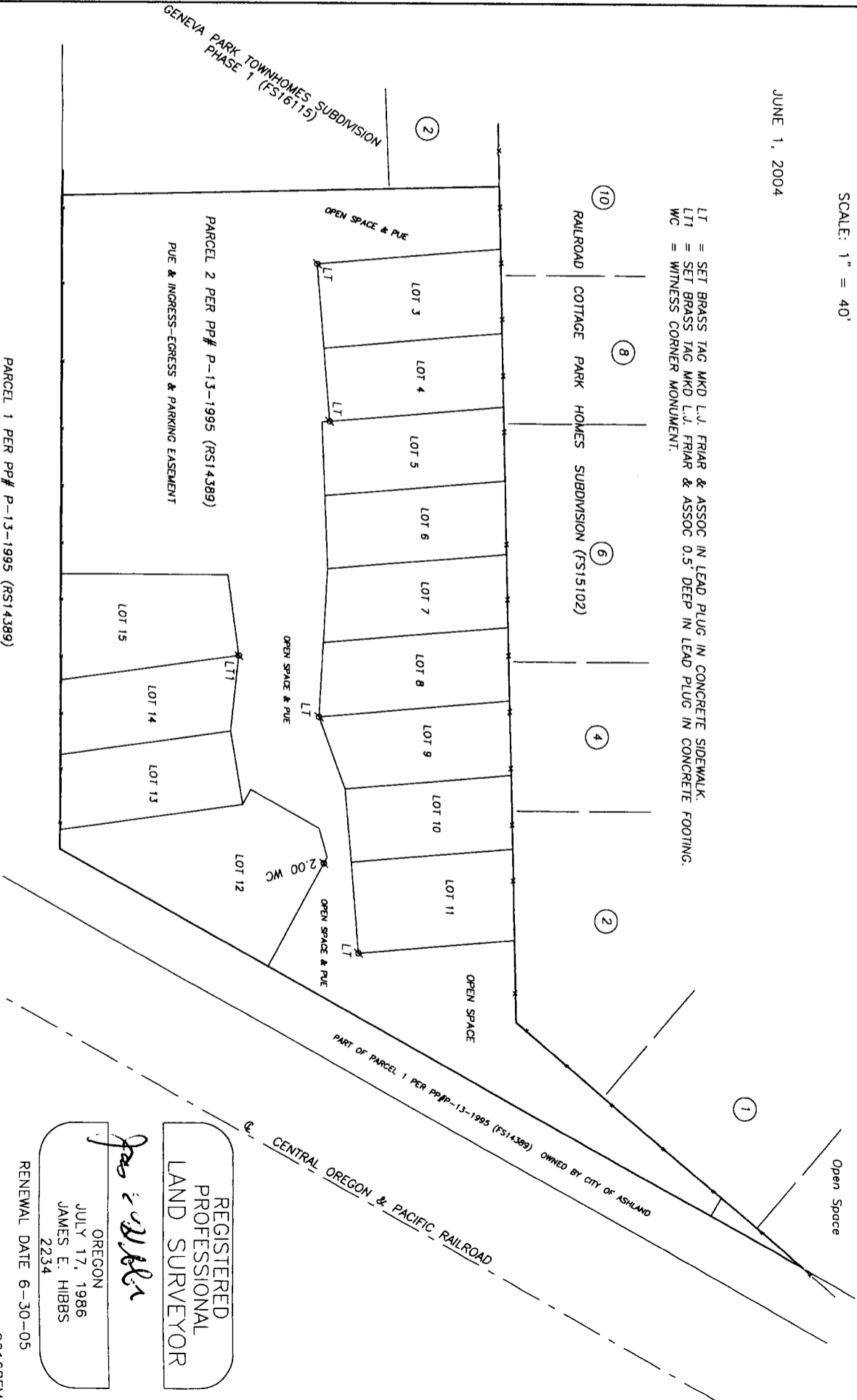
for
 William Barchet
 961 "B" Street
 Ashland, OR 97520



SCALE: 1" = 40'

JUNE 1, 2004

LT = SET BRASS TAG MKD L.J. FRIAR & ASSOC IN LEAD PLUG IN CONCRETE SIDEWALK.
 LTI = SET BRASS TAG MKD L.J. FRIAR & ASSOC 0.5' DEEP IN LEAD PLUG IN CONCRETE FOOTING.
 WC = WITNESS CORNER MONUMENT.



REGISTERED
 PROFESSIONAL
 LAND SURVEYOR

James E. Hibbs

OREGON
 JULY 17, 1986
 JAMES E. HIBBS
 2234

RENEWAL DATE 6-30-05

00168FM

PARCEL 1 PER PP# P-13-1995 (RS14389)

PARCEL 2 PER PP# P-13-1995 (RS14389)
 PUE & INGRESS-EGRESS & PARKING EASEMENT