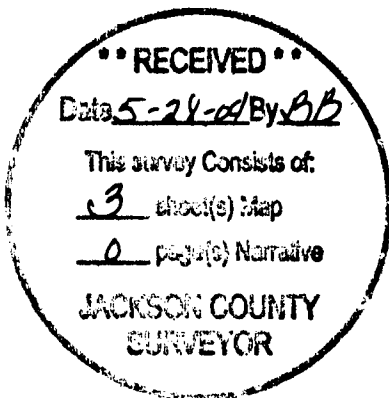


# MAP OF SURVEY

LOCATED IN TOWNSHIP 37 SOUTH, RANGE 1 WEST  
SECTION 32 AND TOWNSHIP 38 SOUTH, RANGE  
1 WEST, SECTIONS 4, 5, & 9, WILLAMETTE MERIDIAN,  
JACKSON COUNTY, OREGON



## SURVEY DATA:

FIELD WORK WAS COMPLETED IN THE FALL, 2002  
BASIS OF BEARING: OREGON GRID, SOUTH ZONE NAD83(91)  
THE COMBINED SCALE FACTOR (CSF) FOR THIS PROJECT IS 0.99994213.  
TO CONVERT LOCAL DATUM PLANE (LDP) COORDINATES TO STATE PLANE COORDINATES (SPC), USE THE FOLLOWING FORMULA: LDP x CSF = SPC.  
TO CONVERT FROM METERS TO INTERNATIONAL FEET, DIVIDE METERS BY 0.3048.

## SURVEY FOR:

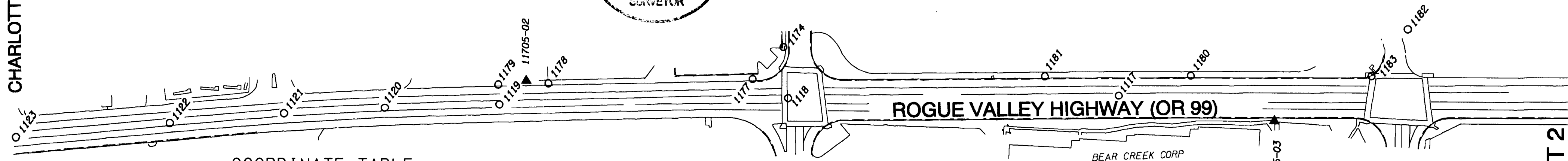
OREGON DEPARTMENT OF TRANSPORTATION  
ROGUE VALLEY AREA OFFICE  
200 ANTELOPE ROAD  
WHITE CITY, OREGON 97503

CHARLOTTE ANN RD

LOWRY LN

11705-01 (not to scale)

SEE SHEET 2



COORDINATE TABLE

Pt ID	East	North	Description
1171501	1306070.311	73607.546	5/8" REBAR W/ALUMINUM CAP "OREGON STATE HWY DIV CONTROL POINT 11715-01"
1171502	1306299.822	73372.447	5/8" REBAR W/ALUMINUM CAP "OREGON STATE HWY DIV CONTROL POINT 11715-02"
1171503	1306517.672	73038.797	1.5" COPPER DISK MARKED "ODOT CONTROL 11715-03"
1117	1306479.754	73113.531	BRASS STEM STA ~477+47 PER CS 13510
1118	1306374.495	73254.519	2" BRASS DISK, NOT LEGIBLE, STA ~483+24 PER CS 13510
1119	1306280.858	73376.311	2" BRASS DISK STAMPED "488+28.75 PS", PER CS 13510
1120	1306243.475	73424.457	2" BRASS DISK STAMPED "490+28.72 PSC", PER CS 13510
1121	1306209.383	73465.941	2" BRASS DISK STAMPED "492+04.90 PCS", PER CS 13510
1122	1306169.404	73511.978	2" BRASS DISK STAMPED "494+04.90 PT", PER CS 13510
1123	1306115.183	73573.778	2" BRASS DISK STAMPED "496+74.71 PS", PER CS 13510
1174	1306395.030	73272.697	5/8" IRON ROD PER CS 6916
1177	1306371.696	73275.903	5/8" IRON ROD W/ORANGE CAP "ROBERTS LS 1656" PER CS 12836, 20cm DEEP
1178	1306305.599	73361.958	5/8" IRON ROD PER CS 5791, 50cm DEEP
1179	1306289.304	73383.141	5/8" IRON ROD PER SHRW, BENT EASTERLY
1180	1306511.151	73088.886	5/8" IRON ROD W/YELLOW CAP "MARQUESS & ASSOC INC" PER CS 13353
1181	1306464.934	73151.389	5/8" IRON ROD PER CS 8178
1182	1306599.485	73010.299	LEAD PLUG AND TACK PER CS 13353
1183	1306568.038	73011.230	5/8" IRON ROD W/YELLOW CAP "MARQUESS & ASSOC INC" PER CS 13353

## SURVEY NARRATIVE

TO COMPLY WITH O.R.S. 209.250

### PURPOSE:

TO PERPETUATE THE POSITION OF ANY FOUND MONUMENTS OF RECORD THAT ARE THREATENED OR WILL BE DESTROYED DURING A ROADWAY CONSTRUCTION PROJECT SCHEDULED FOR THE SUMMER OF 2004. A DILIGENT EFFORT WAS MADE TO FIND ALL MONUMENTS OF RECORD. NOTE - THE FOUND MONUMENTS PER CS 13510 ARE CONSTRUCTION CENTERLINE MONUMENTS FROM A PREVIOUS CONSTRUCTION PROJECT. THIS SURVEY IS NOT A ROADWAY CENTERLINE RETRACEMENT SURVEY.

### PROCEDURE:

FOUND MONUMENTS WERE TIED IN USING A TCA 1800 TOTAL STATION WITH THE COORDINATES SHOWN ON THE FACE OF THE CORRESPONDING PAGE OF THIS SURVEY.

### EQUIPMENT:

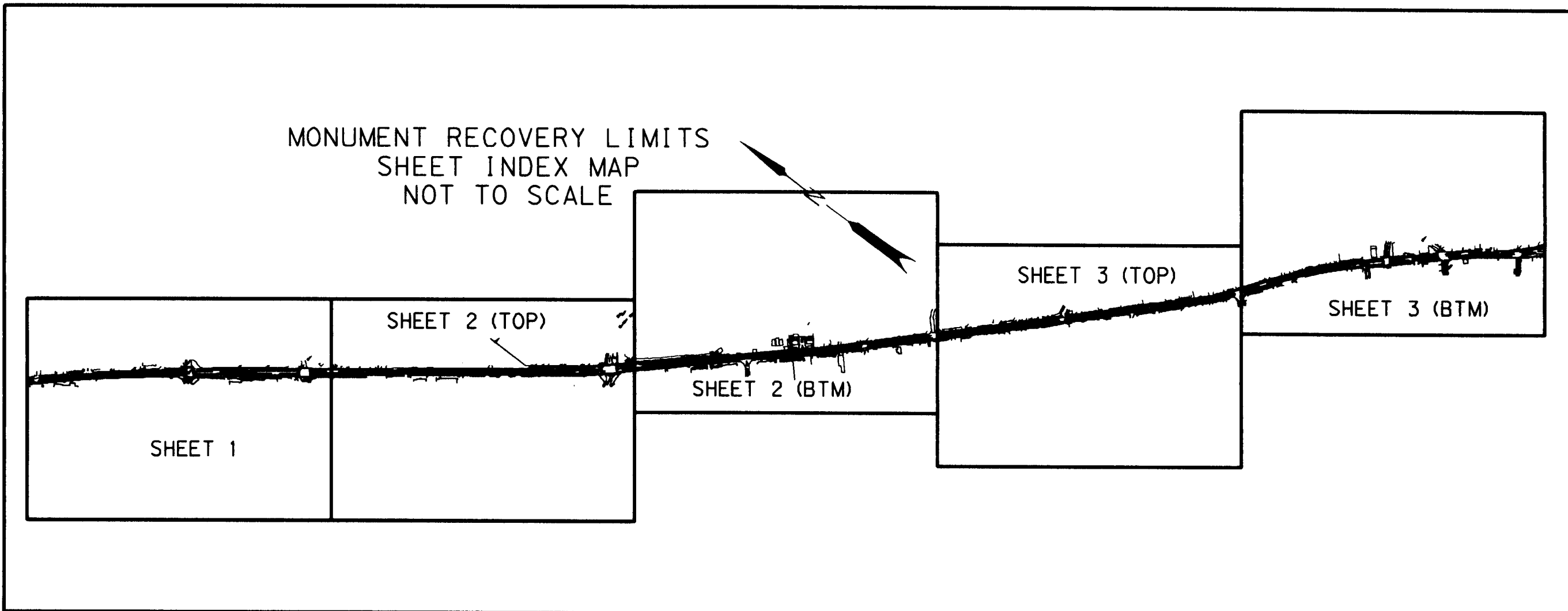
TOTAL STATION LEICA TCA 1800, WITH A STANDARD ANGULAR ERROR OF +/- 1 SECOND AND A STANDARD DISTANCE ERROR OF +/- 2mm, +2ppm.

### LEVEL:

WILD NA2002 DIGITAL LEVEL WITH A PUBLISHED ACCURACY OF 1.5 mm/KM USING A BAR CODE STAFF

LEGEND	
○	FOUND MONUMENT AS NOTED IN TABLE
▲	NETWORK POINT

MONUMENT RECOVERY LIMITS  
SHEET INDEX MAP  
NOT TO SCALE



LISCAD Plus Report: Least Squares Adjustment Report							Error Ellipse		
Adjusted Coordinates 95% Confidence Limits							Semi Semi Orientation		
Pt ID	East	North	East	North	Major	Minor	Orientation		
1171501	1306070.311	73607.546	0.009	0.007	0.009	0.007	66°21'41"		
1171502	1306299.822	73372.447	0.013	0.010	0.014	0.009	61°39'41"		
1171503	1306517.672	73038.797	0.018	0.014	0.020	0.011	61°20'33"		
1171504	1306711.123	72821.244	0.022	0.016	0.024	0.012	58°24'38"		
1171505	1306907.616	72508.433	0.027	0.020	0.031	0.014	56°51'18"		
1171506	1307097.935	72307.190	0.030	0.024	0.035	0.015	54°21'01"		
1171507	1307312.264	72023.280	0.034	0.027	0.040	0.015	53°06'51"		
1171508	1307552.730	71785.921	0.036	0.030	0.044	0.016	51°28'24"		
1171509	1307740.527	71558.048	0.037	0.032	0.046	0.016	50°34'01"		
1171510	1307956.451	71367.600	0.037	0.032	0.046	0.017	49°35'13"		
1171511	1308142.787	71142.431	0.036	0.033	0.045	0.017	48°31'57"		
1171512	1308406.616	70946.227	0.034	0.032	0.043	0.017	47°51'49"		
1171513	1308561.890	70764.169	0.031	0.031	0.040	0.017	46°01'01"		
1171514	1308821.355	70471.993	0.026	0.028	0.035	0.016	41°55'48"		
1171515	1308920.102	70321.683	0.023	0.027	0.032	0.016	37°45'22"		
1171520	1308973.082	70382.436	0.024	0.026	0.032	0.016	41°17'42"		
1171516	1309104.048	70092.613	0.018	0.025	0.027	0.014	27°31'36"		
1171519	1309187.005	70209.375	0.020	0.023	0.027	0.016	36°11'35"		
1171517	1309278.403	69827.248	0.011	0.022	0.022	0.011	7°17'24"		
1171518	1309285.872	70013.503	0.015	0.022	0.023	0.014	20°38'28"		
1171521	1309487.635	69588.787	0.008	0.017	0.017	0.007	164°12'32"		

KEY NO. 13149

OREGON DEPARTMENT OF TRANSPORTATION  
HORIZONTAL CONTROL AND RECOVERY  
MEDFORD TO PHOENIX  
SOUTH PACIFIC HIGHWAY (OR 99)  
JACKSON COUNTY, OREGON

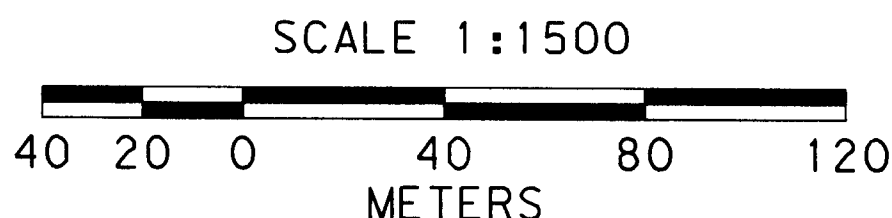
REGISTERED PROFESSIONAL LAND SURVEYOR  
*John R. Pariansi*  
OREGON  
JULY 13, 1999  
JOHN R. PARIANSI  
#51382LS  
EXPIRES: DEC. 31, 2004



ODOT REGION 3, DISTRICT 8  
200 ANTELOPE ROAD  
WHITE CITY, OR 97503

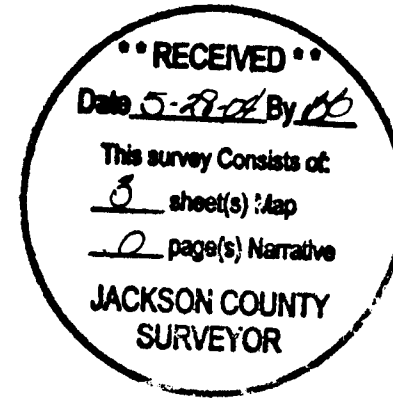
MAY 17, 2004  
SCALE - 1500:1  
SHEET 1/3

T37S, RIW, S32  
T38S, RIW, S4, 5, 9

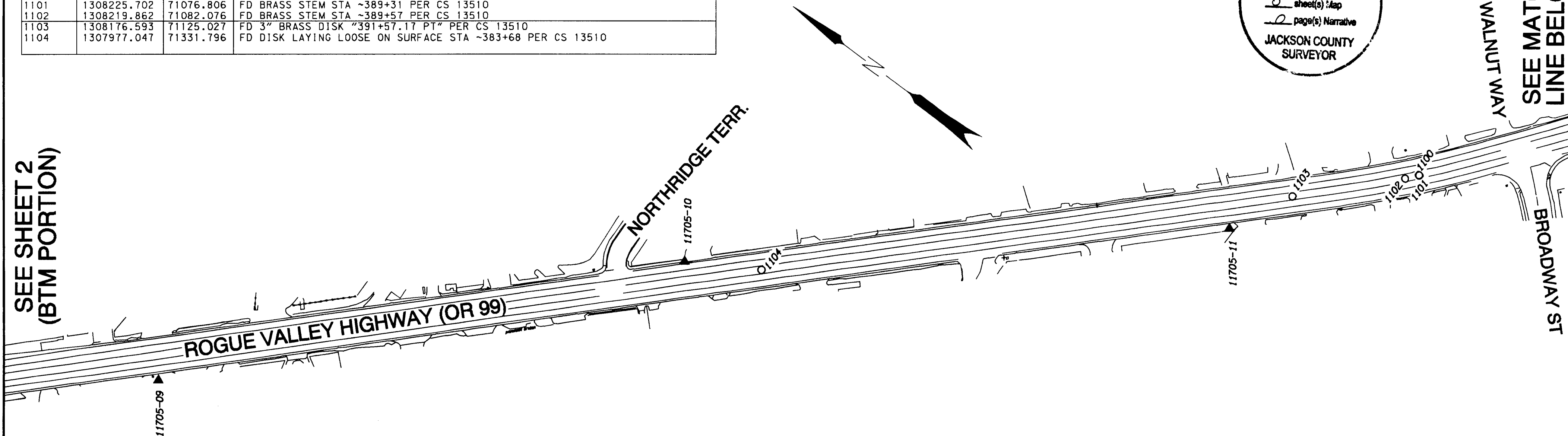


COORDINATE TABLE

Pt ID	East	North	Description
1171509	1307740.527	71558.048	5/8" REBAR W/ALUMINUM CAP "OREGON STATE HWY DIV CONTROL POINT 11715-09"
1171510	1307956.451	71367.600	1.5" COPPER DISK MARKED "ODOT CONTROL 11715-10"
1171511	1308142.787	71142.431	5/8" REBAR W/ALUMINUM CAP "OREGON STATE HWY DIV CONTROL POINT 11715-11"
1100	1308225.791	71077.093	FD 3" BRASS DISK "389+31.38 PSC" PER CS 13510
1101	1308225.702	71076.806	FD BRASS STEM STA ~389+31 PER CS 13510
1102	1308219.862	71082.076	FD BRASS STEM STA ~389+57 PER CS 13510
1103	1308176.593	71125.027	FD 3" BRASS DISK "391+57.17 PT" PER CS 13510
1104	1307977.047	71331.796	FD DISK LAYING LOOSE ON SURFACE STA ~383+68 PER CS 13510



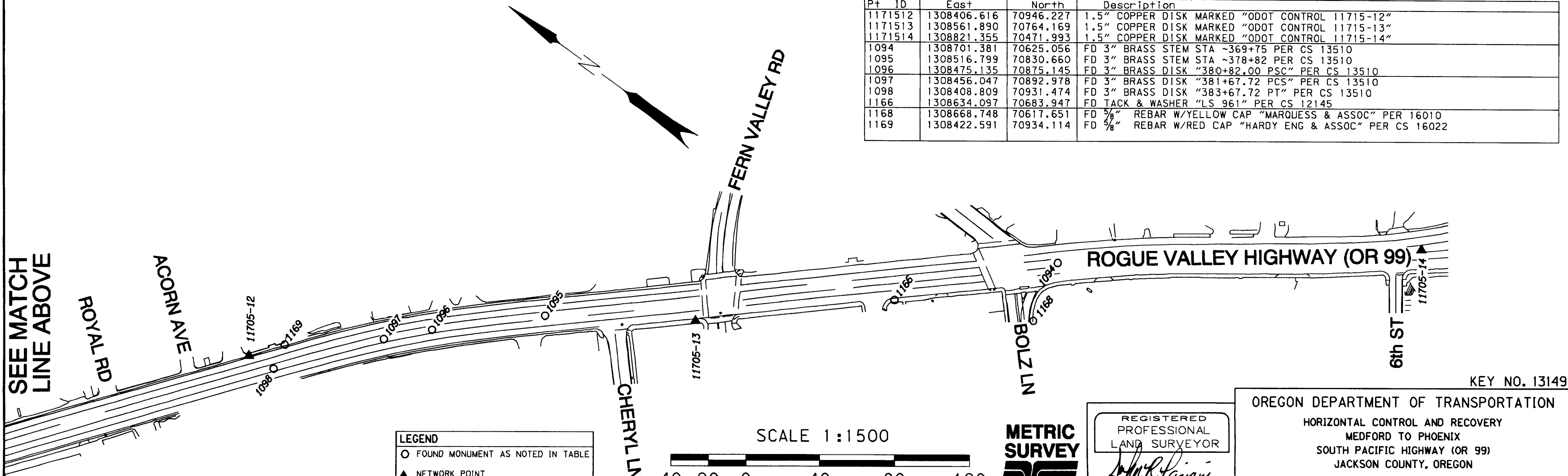
SEE SHEET 2  
(BTM PORTION)



COORDINATE TABLE

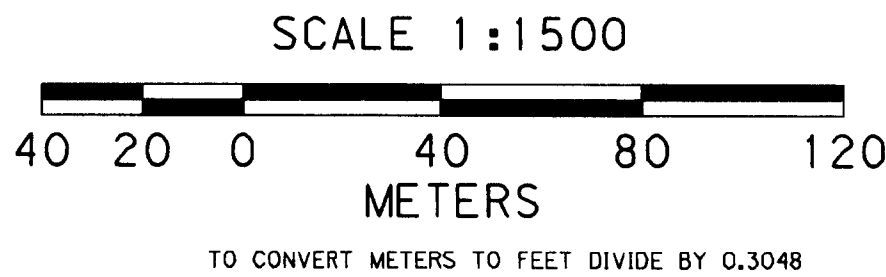
Pt ID	East	North	Description
1171512	1308406.616	70946.227	1.5" COPPER DISK MARKED "ODOT CONTROL 11715-12"
1171513	1308561.890	70764.169	1.5" COPPER DISK MARKED "ODOT CONTROL 11715-13"
1171514	1308821.355	70471.993	1.5" COPPER DISK MARKED "ODOT CONTROL 11715-14"
1094	1308701.381	70625.056	FD 3" BRASS STEM STA ~369+75 PER CS 13510
1095	1308516.799	70830.660	FD 3" BRASS STEM STA ~378+82 PER CS 13510
1096	1308475.135	70875.145	FD 3" BRASS DISK "380+82.00 PSC" PER CS 13510
1097	1308456.047	70892.978	FD 3" BRASS DISK "381+67.72 PCS" PER CS 13510
1098	1308408.809	70931.474	FD 3" BRASS DISK "383+67.72 PT" PER CS 13510
1166	1308634.097	70683.947	FD TACK & WASHER "LS 961" PER CS 12145
1168	1308668.748	70617.651	FD 5/8" REBAR W/YELLOW CAP "MARQUESS & ASSOC" PER 16010
1169	1308422.591	70934.114	FD 5/8" REBAR W/RED CAP "HARDY ENG & ASSOC" PER CS 16022

SEE MATCH  
LINE ABOVE



LEGEND

○	FOUND MONUMENT AS NOTED IN TABLE
▲	NETWORK POINT



REGISTERED  
PROFESSIONAL  
LAND SURVEYOR  
[Signature]  
OREGON  
JULY 13, 1999  
JOHN R. PARIANI  
#51382LS  
EXPIRES: DEC. 31, 2004

OREGON DEPARTMENT OF TRANSPORTATION  
HORIZONTAL CONTROL AND RECOVERY  
MEDFORD TO PHOENIX  
SOUTH PACIFIC HIGHWAY (OR 99)  
JACKSON COUNTY, OREGON

ODOT REGION 3, DISTRICT 8  
200 ANTELOPE ROAD  
WHITE CITY, OR 97503

MAY 17, 2004  
SCALE - 1500:1  
SHEET 3/3

SEE SHEET 1

**RECEIVED**  
 Date 5-28-04 By [Signature]  
 This survey consists of:  
3 sheet(s) Map  
2 page(s) Narrative  
 JACKSON COUNTY  
 SURVEYOR

**ROGUE VALLEY HIGHWAY (OR 99)**

S. STAGE RD

SEE MATCH LINE BELOW

COORDINATE TABLE

PT	EASTING	NORTHING	DESCRIPTION
1171504	1306711.123	72821.244	5/8" REBAR W/ALUMINUM CAP "OREGON STATE HWY DIV CONTROL POINT 11715-04"
1171505	1306907.616	72508.433	5/8" REBAR W/ALUMINUM CAP "OREGON STATE HWY DIV CONTROL POINT 11715-05"
1171506	1307097.935	72307.190	1.5" COPPER DISK MARKED "ODOT CONTROL 11715-06"
1112	1307027.033	72368.784	FD BRASS STEM IN ASPHALT NEAR STA ~447+15 PSC
1113	1307017.213	72381.018	FD 3" BRASS DISK STAMPED "447+66.73 PCS" PER CS 13510
1114	1306980.639	72429.790	FD 3" BRASS DISK STAMPED "4497+66.73 PT" PER CS 13510
1115	1306812.519	72659.268	FD BRASS STEM STA ~459+00 POT
1116	1306632.411	72905.154	FD BRASS STEM STA ~469+00 POT
1126	1307063.795	72341.982	FD TACK & WASHER "LS 1913" IN SIDEWALK PER CS 15322
1127	1307036.479	72376.495	FD TACK & WASHER "LS 1913" IN SIDEWALK PER CS 15322
1128	1307035.297	72375.542	FD TACK & WASHER "LS 1913" IN SIDEWALK PER CS 15322
1129	1307026.799	72388.556	FD TACK & WASHER "LS 1913" IN SIDEWALK PER CS 15322
1130	1307025.595	72387.619	FD TACK & WASHER "LS 1913" IN SIDEWALK PER CS 15322
1131	1307023.643	72392.758	FD TACK & WASHER "LS 1913" IN SIDEWALK PER CS 15322
1132	1306989.217	72436.155	FD TACK & WASHER "LS 1913" IN SIDEWALK PER CS 15322
1133	1306990.449	72437.043	FD TACK & WASHER "LS 1913" IN SIDEWALK PER CS 15322
1134	1306996.226	72429.335	FD 5/8" REBAR W/YELLOW CAP "D. MCMAHAN LS 1913" PER CS 15322
1135	1306969.122	72466.166	FD 5/8" REBAR W/YELLOW CAP "D. MCMAHAN LS 1913" PER CS 15322

COORDINATE TABLE

PT	EASTING	NORTHING	DESCRIPTION
1136	1306960.113	72478.455	FD 5/8" REBAR W/YELLOW CAP "D. MCMAHAN LS 1913" PER CS 16344
1137	1306948.291	72494.600	FD 5/8" REBAR W/YELLOW CAP "D. MCMAHAN LS 1913" PER CS 16344
1138	1306940.913	72501.965	FD 5/8" REBAR W/YELLOW CAP "LJ FRIAR & ASSOC"
1139	1307056.777	72352.803	FD 5/8" REBAR W/YELLOW CAP "D. MCMAHAN LS 1913" PER CS 15322
1140	1307060.283	72348.710	FD 5/8" REBAR W/YELLOW CAP "D. MCMAHAN LS 1913" PER CS 15322
1141	1307044.880	72331.438	FD 5/8" REBAR W/YELLOW CAP "MARQUESS & ASSOC" PER CS 16834
1142	1307012.781	72368.062	FD 5/8" REBAR W/YELLOW CAP "MARQUESS & ASSOC" PER CS 16834
1143	1306939.747	72467.738	FD 5/8" REBAR W/YELLOW CAP "MARQUESS & ASSOC" PER CS 16834
1144	1306912.345	72505.093	FD 5/8" REBAR W/YELLOW CAP "R. BATH LS 1069" PER CS 11814
1145	1307033.538	72304.563	FD 5/8" REBAR W/YELLOW CAP "MARQUESS & ASSOC" PER CS 16834
1148	1307114.573	72298.648	FD 5/8" REBAR PER CS 16155
1149	1307122.857	72289.188	FD 5/8" REBAR PER CS 16155, BENT NORTHERLY
1152	1307044.880	72331.438	FD 5/8" REBAR W/YELLOW CAP "JACKSON CO RDS & PKS SVC" PER CS 15582
1185	1306808.920	72646.135	FD 5/8" REBAR W/YELLOW CAP "LJ FRIAR & ASSOC" PER CS 16480

COORDINATE TABLE

PT	EASTING	NORTHING	DESCRIPTION
1171507	1307312.264	72023.280	1.5" COPPER DISK MARKED "ODOT CONTROL 11715-07"
1171508	1307552.730	71785.921	1.5" COPPER DISK MARKED "ODOT CONTROL 11715-08"
1105	1307574.207	71749.090	FD 3" BRASS DISK STAMPED "420+02.90 PS" PER CS 13510
1106	1307532.155	71793.213	FD 3" BRASS DISK STAMPED "422+02.90 PSC" PER CS 13510
1107	1307516.864	71809.867	FD 3" BRASS STEM STA ~422+77 PER CS 13510
1108	1307476.405	71855.479	FD 3" BRASS DISK STAMPED "424+77.07 PT" PER CS 13510
1109	1307371.205	71975.227	FD 3" BRASS DISK STAMPED "430+00.00 POT" PER CS 13510
1147	1307274.046	72109.465	FD 5/8" REBAR W/YELLOW CAP "FARBER LS 2189" PER CS 16155
1150	1307297.698	72043.257	FD 5/8" REBAR W/YELLOW CAP (NOT LEGIBLE) PER CS 12348
1151	1307203.776	72150.435	FD 5/8" REBAR W/YELLOW CAP "D. MCMAHAN LS 1913" PER CS 12348

SEE MATCH LINE ABOVE

SEE SHEET 3

**ROGUE VALLEY HIGHWAY (OR 99)**

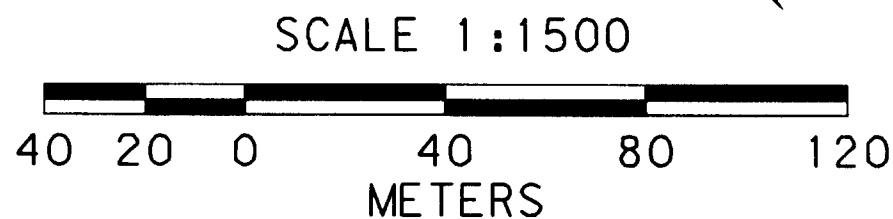
EAST GLENWOOD ROAD

WEST GLENWOOD ROAD

BIRCH ST.

**LEGEND**

- FOUND MONUMENT AS NOTED IN TABLE
- ▲ NETWORK POINT



TO CONVERT METERS TO FEET DIVIDE BY 0.3048



REGISTERED PROFESSIONAL LAND SURVEYOR  
 [Signature]  
 JOHN R. PARIANI  
 JULY 13, 1999  
 #51382LS  
 EXPIRES: DEC. 31, 2004

OREGON DEPARTMENT OF TRANSPORTATION  
 HORIZONTAL CONTROL AND RECOVERY  
 MEDFORD TO PHOENIX  
 SOUTH PACIFIC HIGHWAY (OR 99)  
 JACKSON COUNTY, OREGON

ODOT REGION 3, DISTRICT 8  
 200 ANTELOPE ROAD  
 WHITE CITY, OR 97503

KEY NO. 13149

MAY 17, 2004  
 SCALE - 1500:1  
 SHEET 2/3