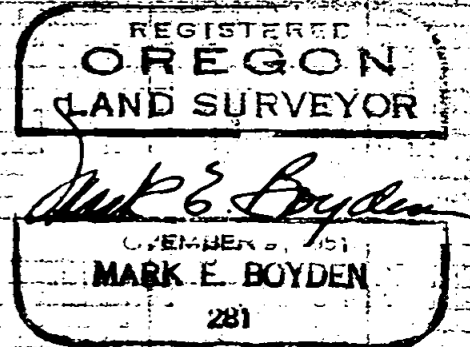
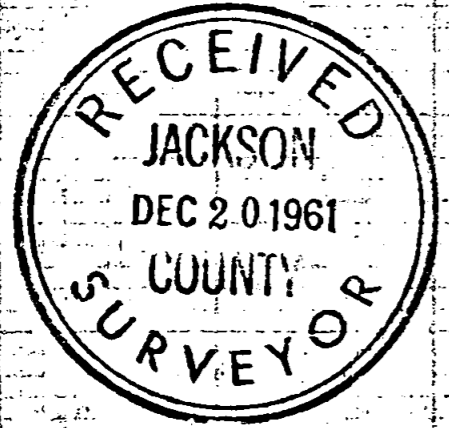
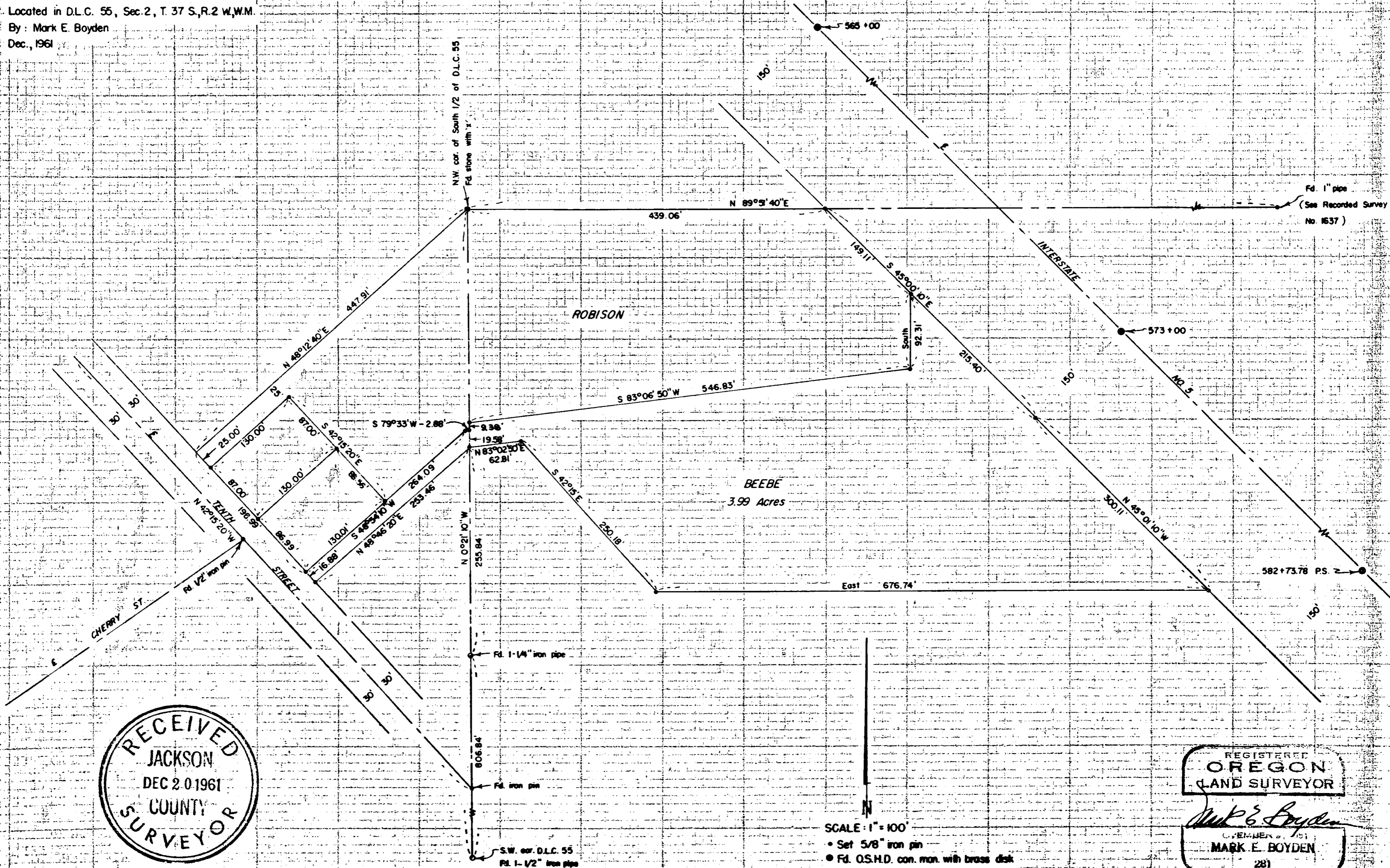


Survey For  
KEN BEEBE & JOHN ROBISON  
Located in D.L.C. 55, Sec. 2, T. 37 S., R. 2 W., W.M.  
By: Mark E. Boyden  
Dec., 1961



SCALE: 1" = 100'

- Set 5/8" iron pin
- Fd. O.S.H.D. con. man. with brass disk

1829

The concrete monuments on Engineer's centerline of Interstate Highway No. 5 were used for centerline control, even though each monument appears to create an angle point along a theoretical highway centerline tangent.

The 25.00-foot strip left along the Northerly boundary of the overall Robison Tract is for a proposed roadway.

Monumented the tracts with iron pins as shown, using for meridian control the bearings established on Recorded Survey No. 1637. This creates a meridian equation of  $0^{\circ} 02' 50''$  from previous surveys by this office in this area.

December 1961

