

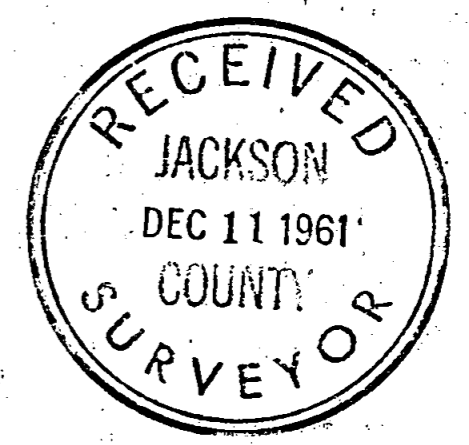
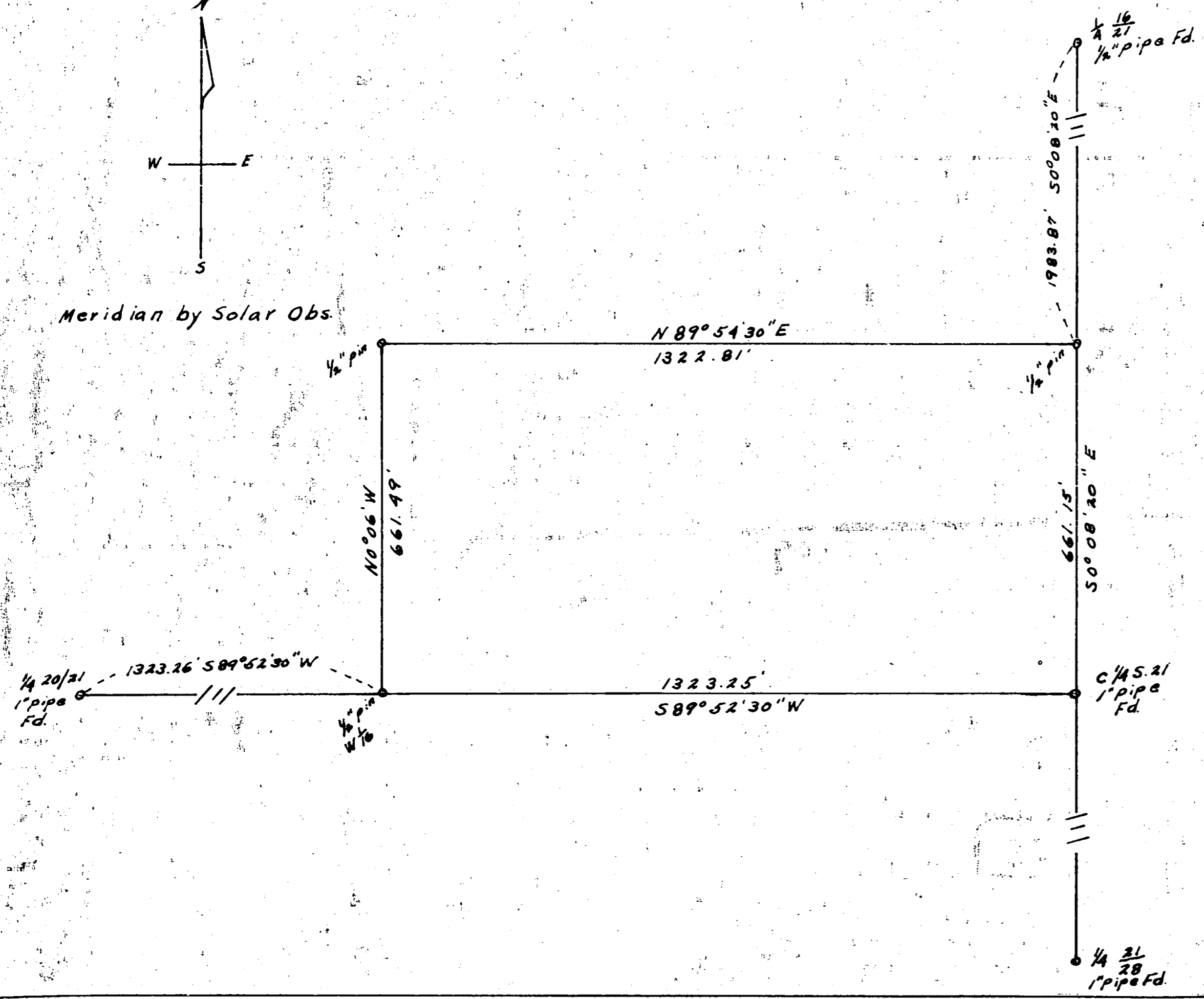
Meridian by Solar Obs.

Charles E. McCann, Property

Section 21 T34S R1W W.M.

Scale 1" = 200ft.

Nov. 1961



Survey No. 1823

Survey Narrative to comply with
Paragraph 209.250
Oregon Revised Statutes

For: Charles E. McGann
Box 274, Shady Cove, Oregon

Purpose: To set the four corners of a tract of land described as
the S 1/2 of SW 1/4 of NW 1/4 Section 21 T. 34 S. R1W.

Procedure:

I had previously ran a traverse between the 1/4 corner 20/21
and the 1/4 corner 21/22 and established the C 1/4 of section 21.
(see River View Estates surveys), also for the establishment of the
North South midsection line of section 21. The above described
C 1/4 is the SE corner of this tract.

I computed the setting of the W 1/16 corner on the east west
mid section line of section 21 from a traverse point on the above
mentioned traverse line, this established the SW corner of the tract.
Mr. Ingle had previously established the NW 1/16 corner of the
section. I established a straight line between this corner and
the W 1/16 corner. I then chained between them, setting a corner
at the mid point for the NW corner of the tract. I had previously
set lot corners along the North South mid section line, North of the
C 1/4 and knowing the over all distance for this one-half mile I
was able to readily locate the NE corner. I ran a traverse between
the NW corner and NE corner to locate the North line and to obtain
a closure on the whole tract.

REGISTERED
OREGON
LAND SURVEYOR

Ralph J. Ellis
OCTOBER 4, 1957
RALPH J. ELLIS
416

