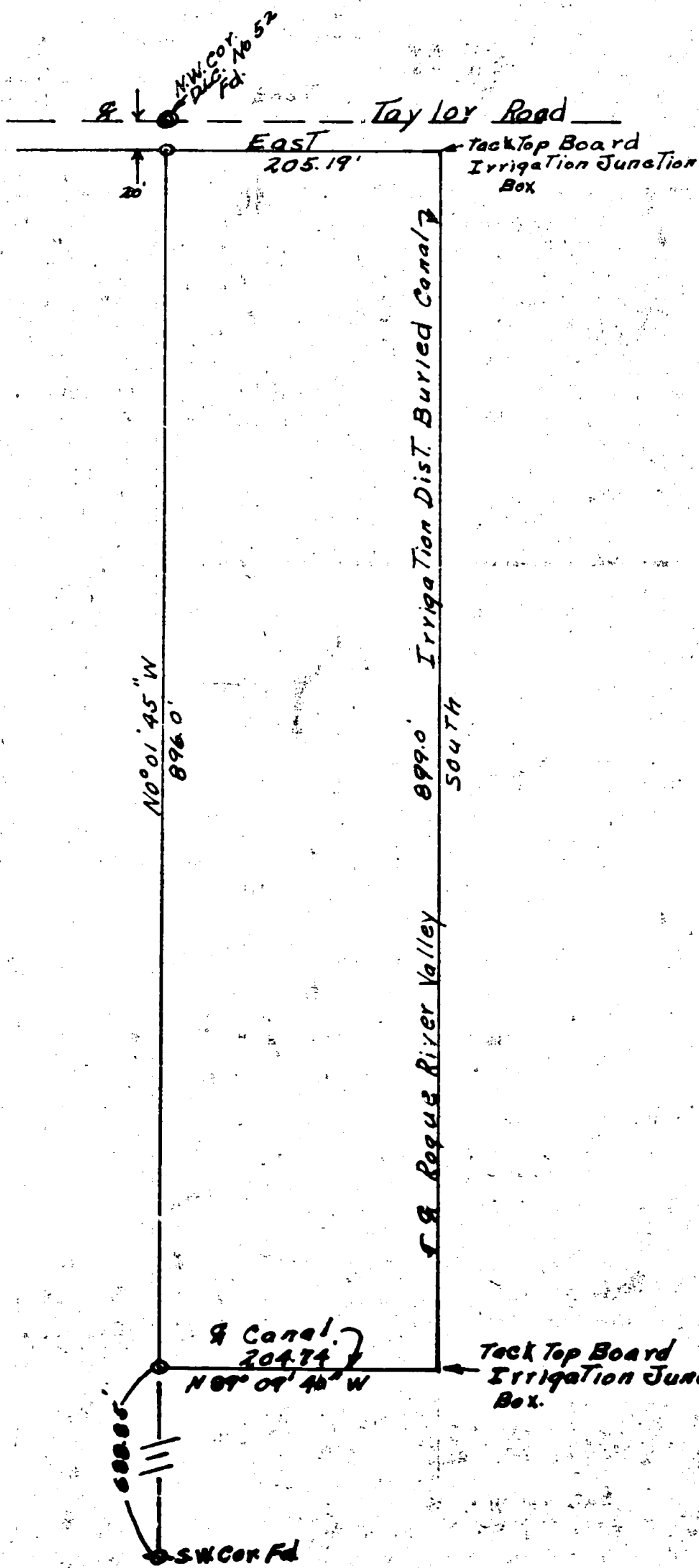
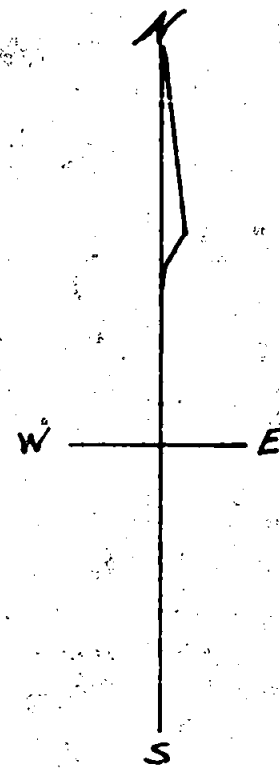


M.W. & Dolores E. Le Roy, Property

D.L.C. No 52 T37S R2W W.M.

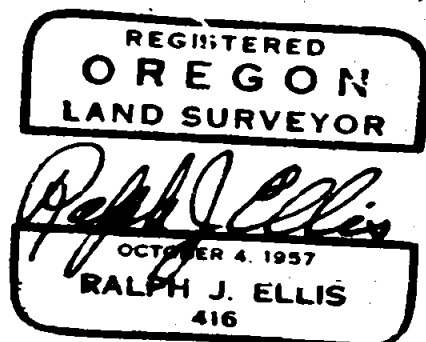
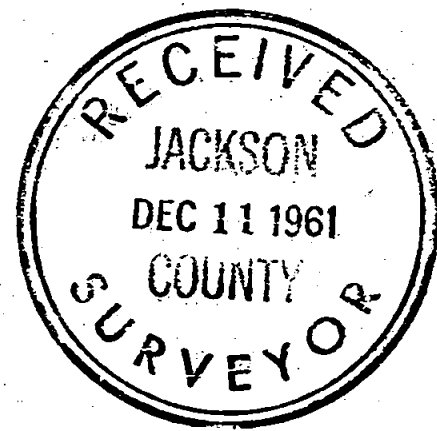
Scale 1" = 100ft.

OCT. 1961



Meridian by Solar Obs.

- o - 1/2" Steel Pins
- @ - 5/8" Steel Pin
- ⊖ - Steel Rail



Survey Narrative to comply with Paragraph 209.250
Oregon Revised Statutes

For: W. and Dolores E. LeRoy
Route 1 Box 217, Central Point

Purpose: To locate a tract of land in a large tract, designated by the original owner.

Procedure: The original owner gave me a map of a survey made by Mr. Lovejoy in 1951 of the large tract in which this tract lies. This map showed distances chained and bearings of lines based on solar observation. I was also shown the location of the NW and SW corners of DLG 52 T 37S R2W, said corners being used by Mr. Lovejoy.

I established a straight line between the above mentioned corners and established a 20.00 foot right of way line on the DLG line as shown on the Lovejoy survey for Taylor Road. At this point I established the North line of the property, chaining the distance shown on the Lovejoy survey to establish the NE corner which point fell on top of a junction box of the Rogue River Irrigation District. While occupying the mentioned 20.0 foot right of way point I chained along the established DLG line to set the SW corner. I then turned the required angle at the SW corner to establish the south line of the small tract which is also a portion of the south line of the large tract, said SW corner fell on top of an Irrigation Box. A closeure was made along the east boundary.

REGISTERED
OREGON
LAND SURVEYOR

Ralph J. Ellis
OCTOBER 4 1957
RALPH J. ELLIS
416

