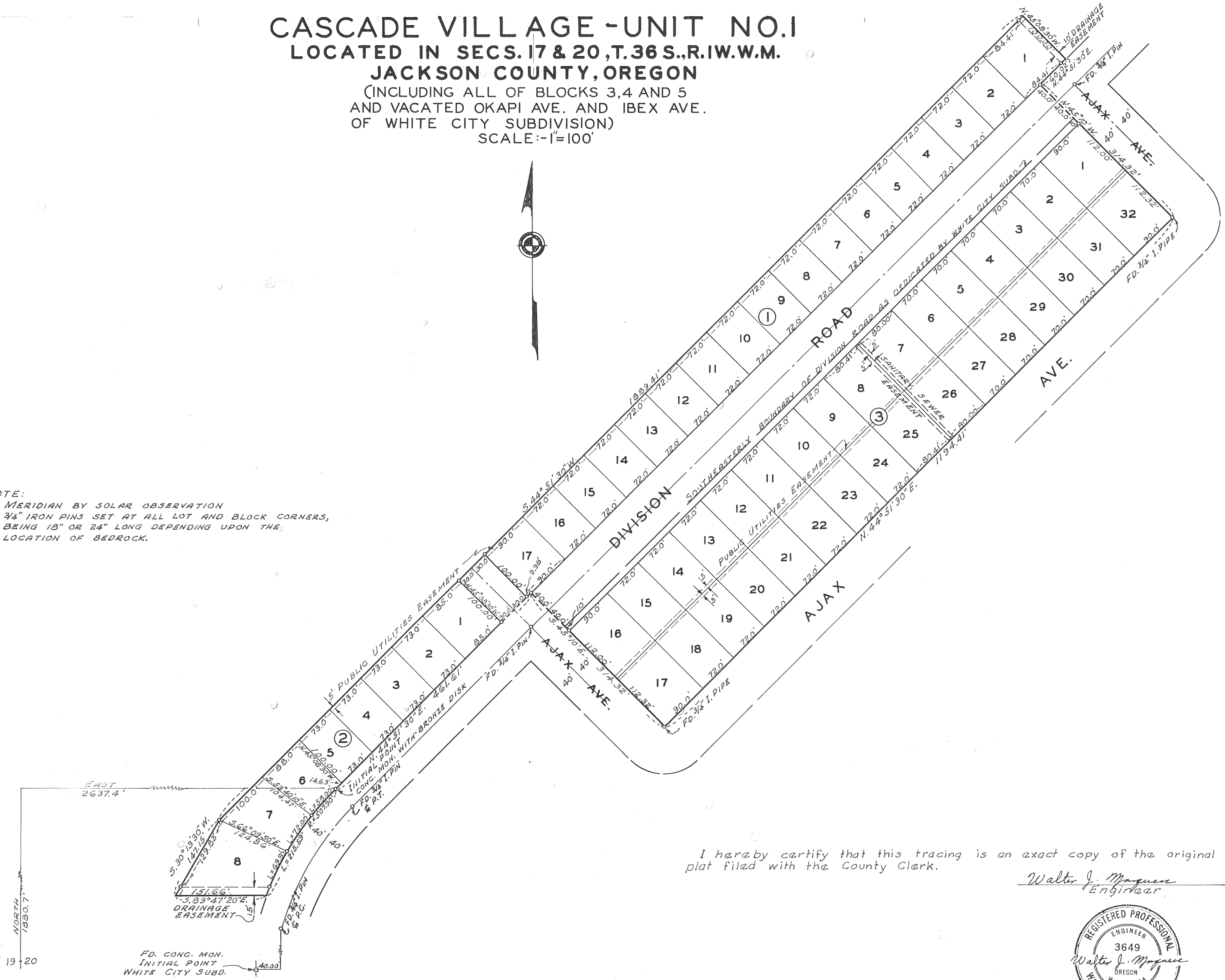


# CASCADE VILLAGE - UNIT NO. 1 LOCATED IN SECS. 17 & 20, T. 36 S., R. 1 W., W. M. JACKSON COUNTY, OREGON

(INCLUDING ALL OF BLOCKS 3, 4 AND 5  
AND VACATED OKAPI AVE. AND IBEX AVE.  
OF WHITE CITY SUBDIVISION)  
SCALE: 1"=100'



NOTE:  
MERIDIAN BY SOLAR OBSERVATION  
3/4" IRON PINS SET AT ALL LOT AND BLOCK CORNERS,  
BEING 18" OR 24" LONG DEPENDING UPON THE  
LOCATION OF BEDROCK.



I hereby certify that this tracing is an exact copy of the original plat filed with the County Clerk.

*Walter J. Marquess*  
Engineer



**CASCADE VILLAGE - UNIT NO. 1**  
**LOCATED IN SECS. 17 & 20, T. 36 S., R. 1 W., W. M.**  
**JACKSON COUNTY, OREGON**  
 (INCLUDING ALL OF BLOCKS 3, 4 AND 5  
 AND VACATED OKAPI AVE. AND IBEX AVE.  
 OF WHITE CITY SUBDIVISION)

**DEDICATION**

KNOW ALL MEN BY THESE PRESENTS, That we, White City Realty Co., an Oregon Corp., are the owners in fee simple of the lands hereon described, and that we have subdivided the same into lots, blocks and streets as shown hereon, and the number and size of the lots and lengths of all lines are plainly set forth, and that this plat is a correct representation of the said subdivision, and we do hereby dedicate to the public for public use all streets, and easements, shown hereon, and we do hereby designate said subdivision as, **CASCADE VILLAGE-UNIT No. 1**

IN WITNESS WHEREOF, we have hereunto set our hands and seals this 30 day of October, 1966.

White City Realty Co.  
John L. Ladan Assistant Secretary  
Glenn L. Jackson President

STATE OF OREGON } s.s.  
 County of Jackson }

OCTOBER 30 A.D. 1966.  
 Personally appeared the above-named Glenn L. Jackson President and John L. Ladan Assistant Secretary of White City Realty Co., an Oregon Corp., and acknowledged the foregoing instrument to be their voluntary act and deed. Before me:

W. J. Marquess  
 Notary Public for Oregon  
 My commission expires the 20<sup>th</sup> day of JANUARY, 1965.

Examined and approved by the Jackson County Planning Commission in regular session this the 28 day of November, 1966.  
 Attest: Dennis B. Lunny Secretary  
W. J. Marquess President

Examined and approved by the Rogue River Valley Irrigation District in regular session this the 7 day of November, 1966.  
 Attest: Arnold M. Linton Secretary  
Otto Bohmert President

Examined and approved this 20<sup>th</sup> day of November, 1966.  
Thad W. Hatten  
 County Assessor

All taxes paid in full to date this the 20<sup>th</sup> day of November, 1966.  
Joseph H. Walsh  
 County Sheriff

**ENGINEER'S CERTIFICATE**

STATE OF OREGON } ss.  
 County of Jackson }

I, Walter J. Marquess, a duly registered engineer of the State of Oregon, being first duly sworn, do hereby certify that I have correctly surveyed and marked with monuments the tract of land hereon shown and the said plat is a correct representation of the same, and the following is an accurate description of the boundary lines: Commencing at the Quarter corner common to Sections 19 and 20, Township 36 South, Range 1 West, Willamette Meridian, Jackson County, Oregon; thence North 1880.70 feet and East 2637.40 feet to a concrete monument with bronze disk located at a curve point on the northwesterly boundary of Division Road for the initial point of beginning; thence N. 44° 51' 30" E. along said road boundary 461.61 feet; thence S. 45° 10' E. to and along the southwesterly boundary of Block No. 3 of White City Subdivision, according to the official plat thereof, now of record in Jackson County, Oregon, 314.32 feet to the most-southerly corner of said Block No. 3; thence N. 44° 51' 30" E., 1194.41 feet to the most easterly corner of Block No. 5 of said White City Subdivision; thence N. 45° 10' W. along the north-easterly boundary of said Block No. 5 and the northwesterly projection thereof, 314.32 feet to the northwesterly boundary of Division Road; thence N. 44° 51' 30" E. along said road boundary 60.02 feet; thence N. 45° 08' 30" W., 100.00 feet; thence S. 44° 51' 30" W., 1889.41 feet; thence S. 30° 13' 30" W., 147.15 feet; thence S. 89° 47' 20" E., 151.66 feet to the northwesterly boundary of Division Road; thence along said road boundary 215.59 feet on the arc of a curve right (which arc has a radius of 507.90 feet and a long chord of N. 32° 41' 50" E., 213.98 feet) to the initial point of beginning.

Excepting therefrom that portion of Division Road previously dedicated on said White City Subdivision.

Walter J. Marquess  
 Engineer  
 Subscribed and sworn to before me this 24<sup>th</sup> day of October, 1966.  
Selpha O. Jentler  
 Notary Public for Oregon  
 My commission expires the 25<sup>th</sup> day of August, 1966.

Examined and recommended for approval of the County Court.  
Mark E. Boyden  
 County Surveyor

527192  
 For order of the County Court approving this plat see Volume 55, Page 339, of County Commissioners' Journal of Proceedings.  
Wm. Adeln  
 County Clerk

Filed for record this the 6<sup>th</sup> day of December, 1966, at 12:52 o'clock P.M. and recorded in 2 Volume of plats at page 59 of records of Jackson County, Oregon.  
Wm. Adeln  
 County Recorder

I hereby certify that this tracing is an exact copy of the original plat filed with the County Clerk.  
Walter J. Marquess  
 Engineer



SURVEY NARRATIVE TO COMPLY WITH O.R.S. 209.250.

FOR: White City Realty Company  
P. O. Box 526  
White City, Oregon

PURPOSE: To monument and prepare an official plat for the recording of CASCADE VILLAGE, UNIT NO. 1.

LOCATION: Sections 17 and 20, Township 36 South, Range 1 West.

PROCEDURE:

Meridian was determined from the monumented centerline tangent of Antelope Road, using a bearing of South  $89^{\circ} 47' 57''$  East at Agate Road as determined by the Army Engineers and then correcting same for convergency near the center of the proposed overall CASCADE VILLAGE development. The Army Engineer's street centerline monuments on Antelope Road were then used as a base line between Division Road and South 23rd Street to proportion back the tie to the officially re-established  $\frac{1}{4}$  corner common to Sections 19 and 20. This proportion develops in a straight-line distance from the initial point of CASCADE VILLAGE, UNIT NO. 1 to the  $\frac{1}{4}$  corner of Sections 19 and 20, 0.3 feet less distance than that reported by the Army Engineers Camp White grid.

Found monuments as set on White City Subdivision to Control those boundaries of CASCADE VILLAGE abutting said subdivision.

October 1961

