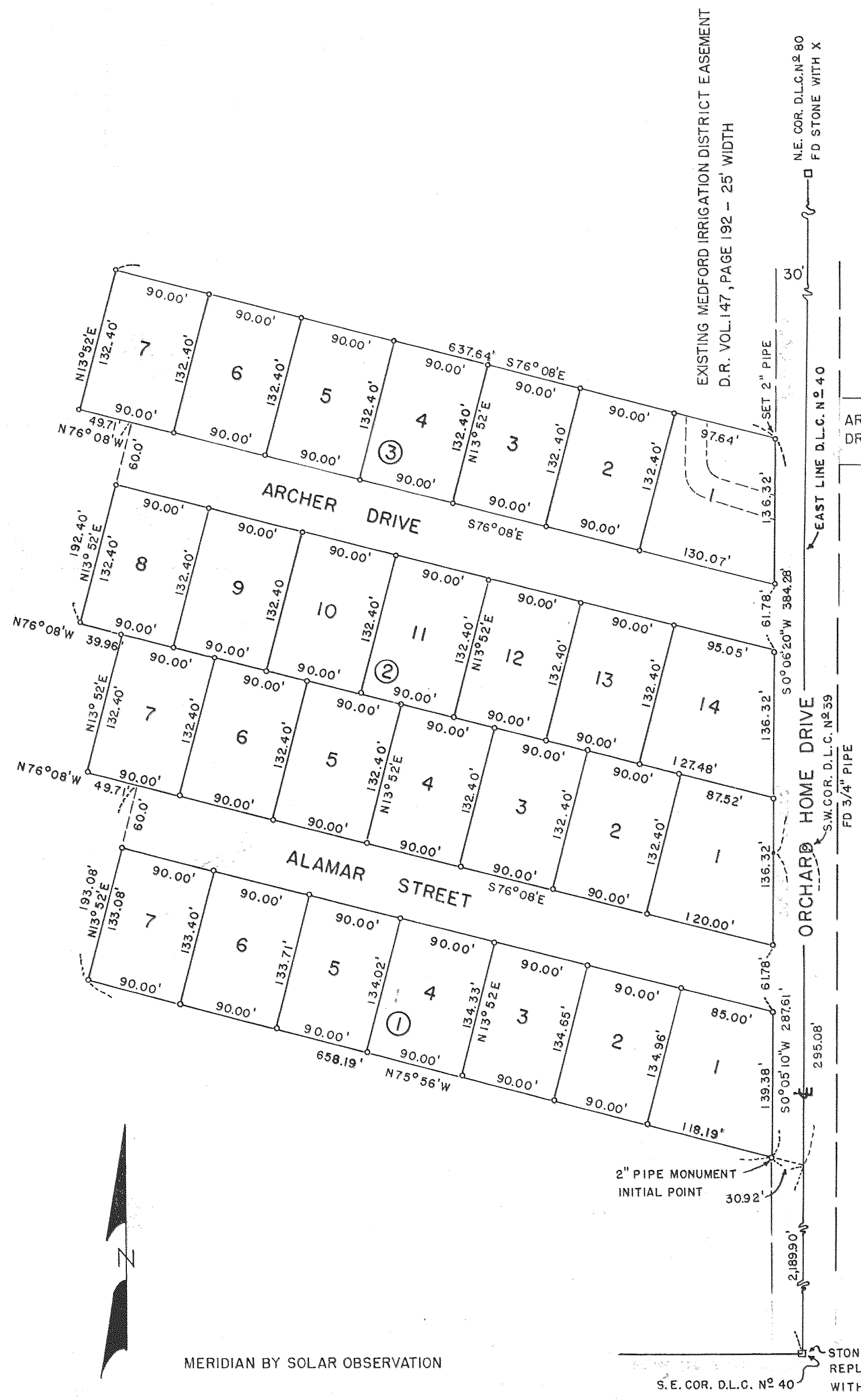


SPLENDOR VIEW SUBDIVISION
 LOCATED IN SECTION 2, T.38S., R.2 W.W.M.
 JACKSON COUNTY, OREGON
 SCALE: 1"=100'



DEDICATION

KNOW ALL MEN BY THESE PRESENTS THAT we Ross Adams, Lois Adams, Lool J. Wilson and Ingrid Wilson, are the owners in fee simple of the lands hereon described, that we have subdivided the same into lots, blocks and streets as shown hereon, and the number and size of the lots and lengths of all lines are plainly set forth, and that this plat is a correct representation of the said subdivision, and we do hereby dedicate to the public for public use all streets shown hereon, and we do hereby designate said subdivision as, SPLENDOR VIEW SUBDIVISION.

IN WITNESS WHEREOF, we have hereunto set our hands and seals this 25th day of September, 1961.

Lool J. Wilson
Ingrid Wilson
Ross Adams
Lois Adams

STATE OF OREGON } ss.
 County of Jackson }
September 25th A.D. 1961.

Personally appeared the above named, Ross Adams, Lois Adams, Lool J. Wilson and Ingrid Wilson and acknowledged the foregoing instrument to be their voluntary act and deed.

Before me: *Admet Hark*
 Notary Public for Oregon
 My commission expires the 4th day of March, 1965.

Examined and approved by the Jackson County Planning Commission in regular session this the 2nd day of November, 1961.

Daniel B. Lowry Secretary
Ed Hoagney President

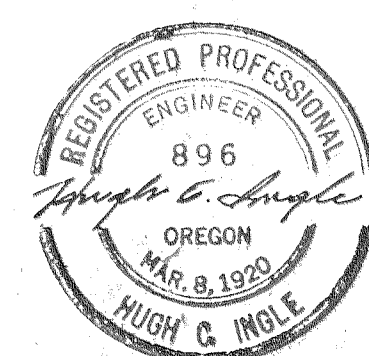
Examined and approved by the Medford Irrigation District in regular session this the 2nd day of November, 1961.

J. G. H. H. H. H. H. Secretary
Paul Culbertson President

Examined and recommended for approval of the County Court this the 2nd day of NOVEMBER, 1961.

Hugh C. Ingle
 County Surveyor

Note: 5/8" steel pins at all block corners and 1/2" steel pins at all lot corners.



ENGINEERS CERTIFICATE

STATE OF OREGON, } ss.
 County of Jackson }

I, Hugh C. Ingle, a duly registered engineer of the State of Oregon, being first duly sworn, do hereby certify that I have correctly surveyed and marked with proper monuments as provided by law the tract of land hereon shown, and the said plat is a correct representation of the same, and the following is an accurate description of the boundary lines: Commencing at a point on the East line of donation Land Claim N^o 40 in Township 38 South Range 2 West, W.M. in Jackson County, Oregon, said point being 2,189.90 feet North of the Southeast corner of said Donation Land Claim N^o 40, running thence N.75°56'W. 3092 feet to a 2" pipe, the point of beginning; Running thence N.75°56'W. 658.19 feet; thence N.13°52'E., 193.08 feet; thence N.76°08'W., 49.71 feet; thence N.13°52'E., 132.40 feet; thence N.76°08'W., 39.96 feet; thence N.13°52'E., 192.40 feet; thence N.76°08'W., 49.71 feet; thence N.13°52'E., 132.40 feet; thence S.76°08'E., 637.64 feet; thence S.0°06'20"W., 384.28 feet; thence S.0°05'10"W. parallel to said Claim line a distance of 287.61 feet to the point of beginning.

Hugh C. Ingle
 Engineer

Subscribed and sworn to before me this 21 day of September, 1961.

Bruce A. Manley
 Notary Public for Oregon

My commission expires the 3 day of October, 1962.

Examined and approved this 27th day of September, 1961.

Shad W. Hatten
 County Assessor

All taxes paid in full to date this the 27th day of September, 1961.

Walter H. H. H.
 County Sheriff

525420

Filed for record this 10th day of November, 1961, at 12:20 o'clock P.M. and recorded in 8 Volume of Plats at Page 57 of records of Jackson County, Oregon.

Emm Madell
 County Clerk

I hereby certify that this tracing is an exact copy of the original plat filed with the County Clerk.

Hugh C. Ingle
 Engineer

For order of the County Court approving this plat see Volume , Page of County Commissioners' Journal of Proceedings.

Emm Madell
 County Clerk

MERIDIAN BY SOLAR OBSERVATION

STONE DESTROYED IN 1954
 REPLACED WITH CON. MON.
 WITH BRASS CAP
 S.E. COR. D.L.C. N^o 40

SURVEY NARRATIVE TO COMPLY WITH PARAGRAPH 209.350
OREGON REVISED STATUTES.

FOR: Mr. Ross Adams

PURPOSE:

To establish boundaries and Block and Lot corners of a sub-division of land known as Splendor View Subdivision and furnish necessary plats for record..

PROCEDURE:

Survey control points were established on the East line of Donation Land Claim # 40 in T. 38 South, Range 2 W. of W, E, A residence in Brittsan Subdivision being on the D. L. C. Line , the Southeast corner of D. L. C. 40 was not directly visible.

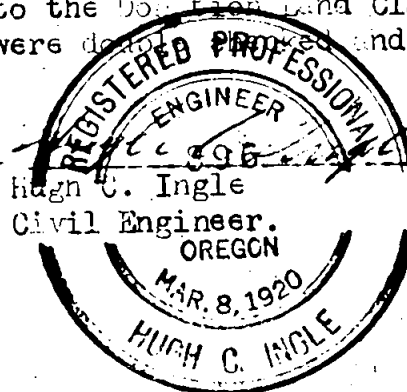
A 90 degree offset around the building was made, using the true bearings and a point on the D.L.C. line established from which a point on line, sighted to the Northeast corner of the D.L.C., was established at the record distance north from the Southeast Donation Land Claim Corner.

An offset check to the pin at the Northwest corner of Lot 1 Block 7 of Brittsan Subdivision showed it to be .18 feet East of the D.L.C. line projected South and this position was used in sighting and checkpoints previously set North on the D. L. C. line.

Bearings were established by Polaris observation and angle of property line returned in accordance with Deed Record.

Beginning point was set on the line of West side of 60 foot road width and West line of road was located parallel to the Donation Land Claim line.

Block lines and distances and angles were determined and proper monuments set at all corners.



Oct., 23, 1961

