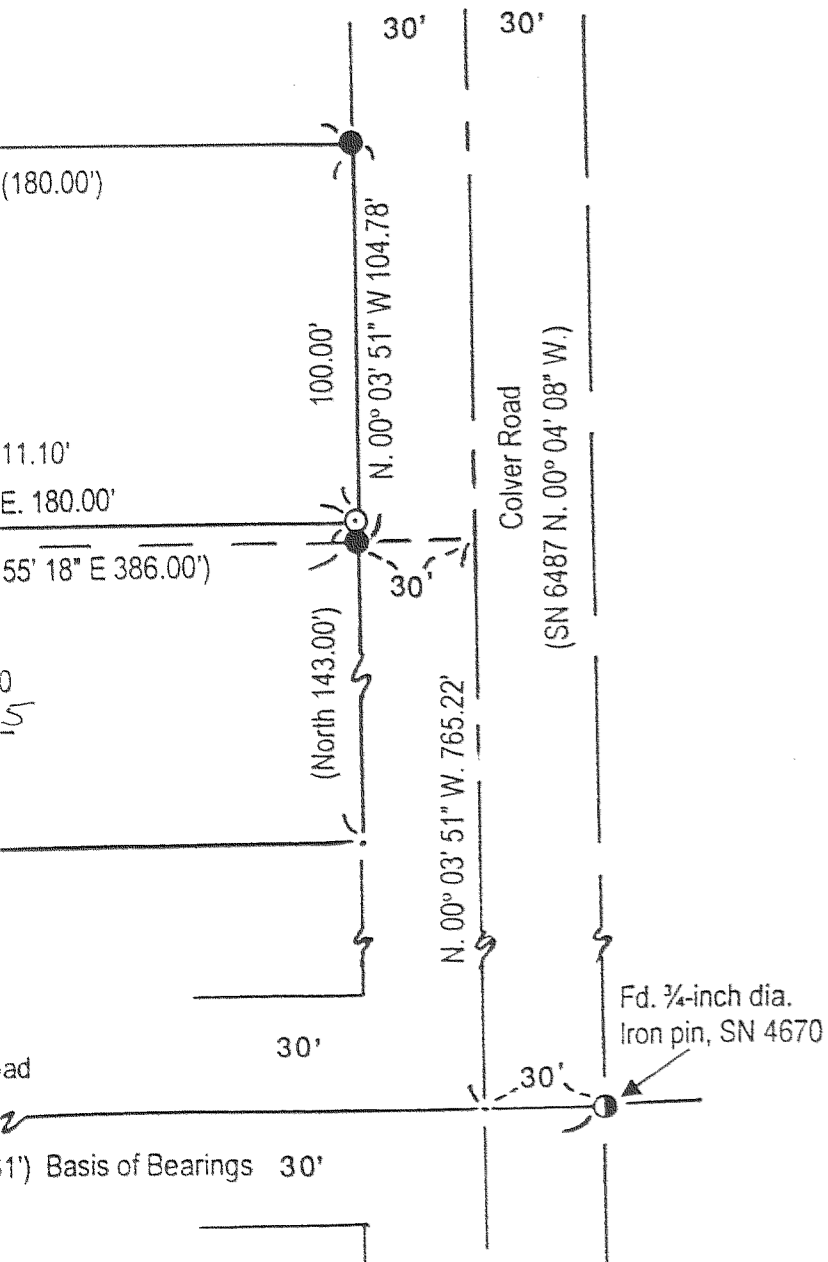


narrative to Comply with O.R.S. 209.250

To survey and monument the Lot Line Adjustment
lots 381W16D 2100 and 381W16DA 900 per approval
Jackson County Planning Department.

I recovered monuments established by SN 4670 and
monumented the recovered monuments and deed documents
95-22103 to control the position of the adjusted
monuments as shown to mark the line.

was performed using a Nikon DTM 420 Electronic Total
station and related equipment.



17960