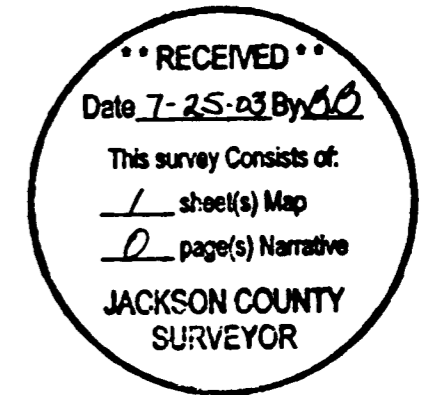


LONE ROCK TIMBER CO.

P O BOX 1127 ROSEBURG, OREGON 97470
 TOWNSHIP 33 SOUTH RANGE 2 EAST SECTION 17
 DATE: JULY 2003 SCALE 1" = 200'

M 33-2E-17 SURVEY
 JACKSON COUNTY, OREGON



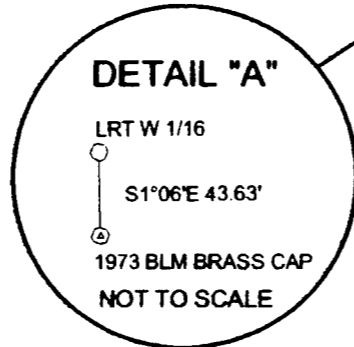
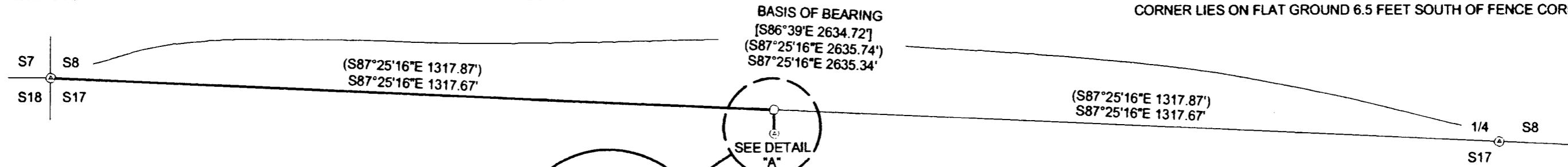
NARRATIVE:

THIS SURVEY WAS CONDUCTED TO ESTABLISH PROPERTY CORNERS AND PROPERTY LINES FOR TIMBER CUTTING PURPOSES. WE INITIATED THIS SURVEY AT THE NORTHWEST CORNER OF SECTION 17 A BLM BCIP SET FROM ORIGINAL AND PERPETUATED EVIDENCE. WE BEGAN A RANDOM CLOSED LOOP SURVEY AROUND THE WEST 1/2 OF THE NORTHWEST 1/4 OF SECTION 17 FOR PROPERTY LINE MARKING PURPOSES. WE FOUND A 43 FOOT DISCREPENCY IN POSITION OF THE WEST 1/16 BETWEEN A 1970 HOFFBUR SURVEY AND A 1973 BLM SURVEY. WE RAN ANOTHER CLOSED LOOP SURVEY FROM THE BLM WEST 1/16 CORNER TO THE NORTH 1/4 OF SECTION 17 (A BLM BCIP SET FROM ORIGINAL AND PERPETUATED EVIDENCE) AND CLOSED THE TRAVERSE BACK TO THE NORTHWEST SECTION CORNER. WE NOTIFIED BLM GEOGRAPHIC SCIENCES OFFICE IN PORTLAND AND SET OUR OWN WEST 1/16 CORNER AS PER BLM INSTRUCTION (LETTER ON FILE WITH THE JACKSON COUNTY SURVEYOR). WE THEN RIBBONED, BLAZED, PAINTED AND TAGGED THE PROPERTY LINE AS SHOWN. THIS SURVEY WAS DONE WITH A NIKON DTM 450 TOTAL STATION. I WAS ASSISTED ON THIS SURVEY WITH GARY ANGIOLET, PAT CARTER AND IGNACIO ROMAN.

THE NORTHWEST SECTION CORNER OF SECTION 17
 FOUND 1973 BLM BRASS CAP IN LARGE MOUND OF STONES
 - 15" DOUGLAS FIR BEARS S38 1/2°W 20.7 FEET (RECORD S40°W 20.79 FEET)
 WELL HEALED FACE AND TAG
 - 13" OAK BEARS N33°W 29.8 FEET (RECORD N31 1/2°W 29.70 FEET) VERY
 WELL HEALED FACE AND TAG
 - 17" PINE BEARS S85 1/4°E 67.1 FEET (RECORD S84 1/2°E 67.65 FEET)
 WELL HEALED FACE NO TAG
 CORNER LIES APPROX. 10 FEET SOUTH OF EAST - WEST FENCE LINE

THE WEST 1/16 CORNER BETWEEN SECTIONS 8 & 17
 SET 5/8" IRON ROD WITH 2 1/2" ALUMINUM CAP MARKED LONE ROCK
 TIMBER N 1/16 S8 S17 2003 PLS 2291 IN MOUND OF STONES
 - 10" DOUGLAS FIR BEARS N54 1/2°E 27.0 FEET WE SCRIBE W 1/16
 S8 BT AND TAG TREE
 - 9" CEDAR BEARS S16 1/2°W 15.2 FEET WE SCRIBE W 1/16 S17 BT
 AND TAG TREE
 - 1973 BLM BRASS CAP IN LARGE MOUND OF STONES BEARS S1°6'E 43.63 FEET
 CORNER LIES ON SOUTH SLOPE APPROX. 44 FEET SOUTH OF EAST - WEST FENCE LINE

THE NORTH 1/4 CORNER BETWEEN SECTIONS 8 & 17
 FOUND 1973 BLM BRASS CAP IN LARGE MOUND OF STONES
 - 18" DOUGLAS FIR BEARS N53 3/4°E 30.9 FEET (RECORD N54°E 30.69 FEET)
 WELL HEALED FACE AND TAG
 - 7" OAK BEARS S74 3/4°W 17.7 FEET (RECORD S76°W 17.82 FEET) WELL
 HEALED FACE AND TAG
 - 30" OAK WITH BT TAG BEARS S49 1/4°E 16.7 FEET (RECORD S46°E 16.5 FEET)
 MEASURED TO MIDDLE OF ROOT HOLE
 - 30" PINE FENCE CORNER BEARS N9°E 6.5 FEET. FENCE RUNS NORTH AND WEST
 CORNER LIES ON FLAT GROUND 6.5 FEET SOUTH OF FENCE CORNER.



LEGEND:

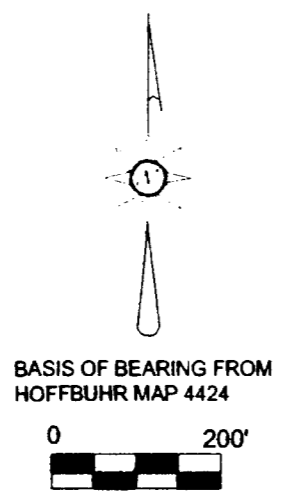
- SET 5/8" X 40" IRON ROD WITH 2 1/2" ALUMINUM CAP
- ⊙ FOUND 1973 BLM BRASS CAP IN MOUND OF STONE
- () 1970 HOFFBUHR SURVEY #4424 FILED IN JACKSON COUNTY SURVEYORS OFFICE
- [] 1973 BLM FIELD NOTES T. 33 S. R. 2 E. PAGES 59 & 60 FILED IN JACKSON COUNTY SURVEYORS OFFICE
- LINES BLAZED PAINTED AND TAGGED
- - - PROJECTED LINES

REGISTERED
 PROFESSIONAL
 LAND SURVEYOR

Ken W. Hoffine

OREGON
 JULY 1987
 KEN W. HOFFINE
 225
 EXPIRES 6-31-05

FILE NAME M 33-2E-17		
SCALE 200 Ft/In	DATE 6-20-2003	DRAWN BY G. ANGIOLET
JOB	REVISION	SHEET
\$JOB	1/1	1/1



This map drawn with TRAVERSE PC. Software