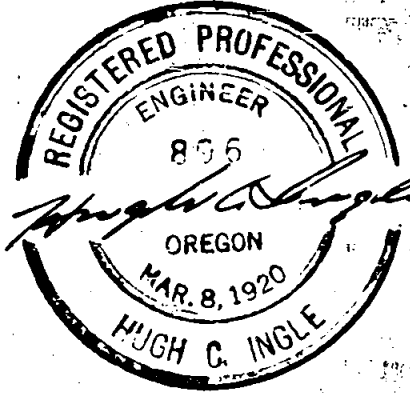
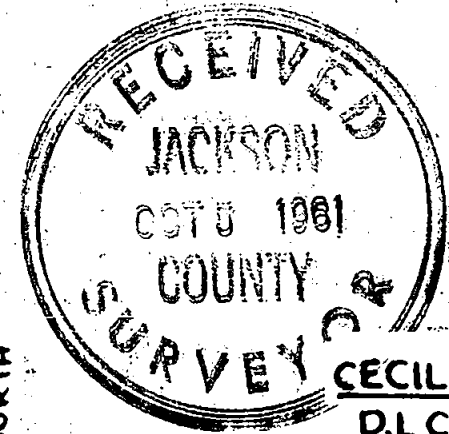
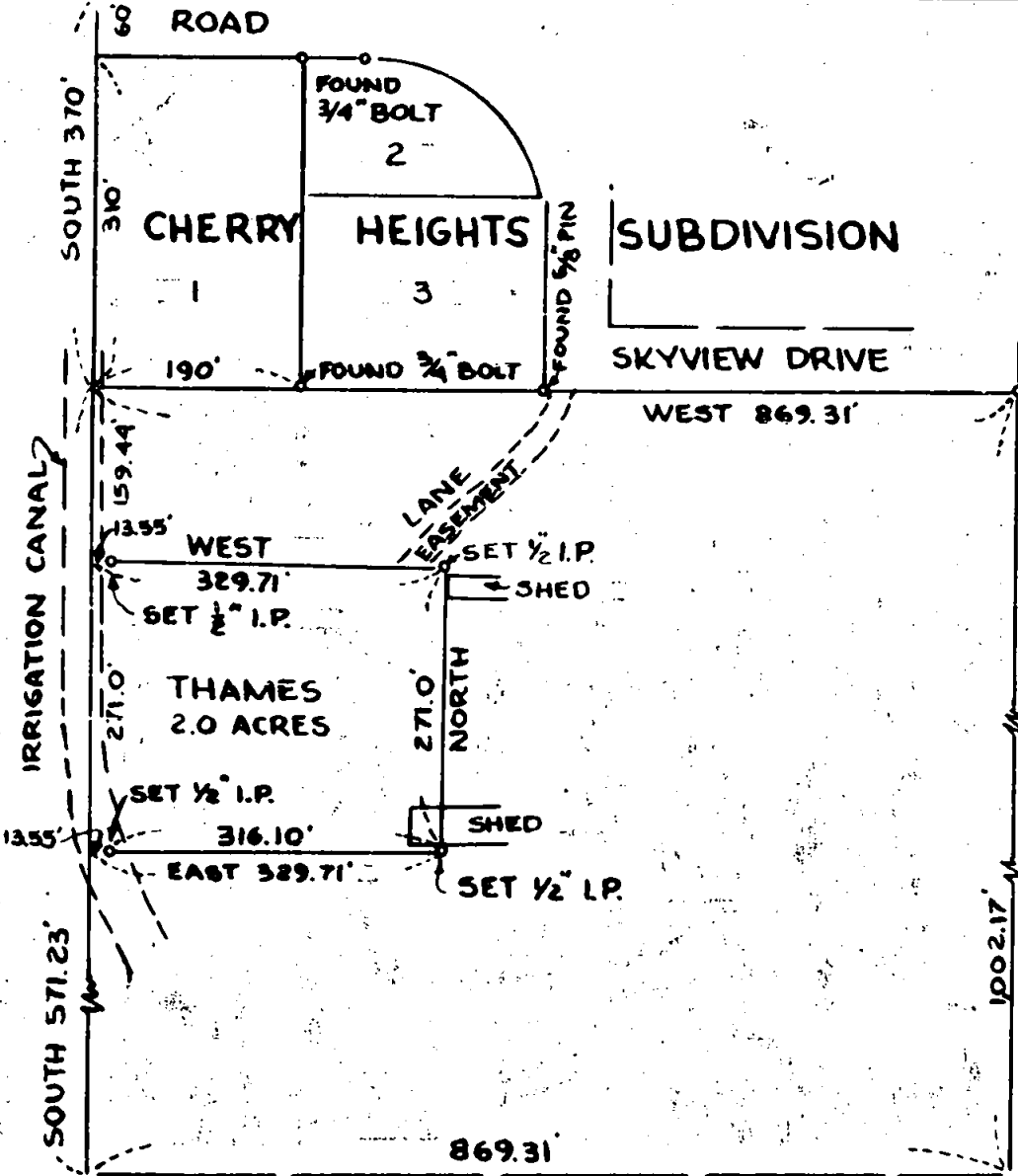


N.W. COR. TRACT
D.R. VOL 250, PAGE 297

S.W. COR. D.L.C. #402 N. 89° 49' 10" W 1831.5' TO N.E. COR. D.L.C. #47



SURVEY
CECIL THAMES PROPERTY
 D.L.C. #47 T. 38 S. R. 2W.
 JACKSON COUNTY, OREGON
 JULY 1961 HUGH C. INGLE
 SCALE: 1" = 200' CIVIL ENGINEER

SURVEY NARRATIVE TO COMPLY WITH PARAGRAPH 209.250
OREGON REVISED STATUTES.

FOR: CECIL THAMES.

PURPOSE:

To establish property lines in location as requested and for making property description and map.

PROCEDURE:

The lines were established from those monuments marking the lines of lots on Cherry Heights Subdivision as of record and by checking back to the North line of D.L.C. #47. Bearings and distances on the subdivision lines were found correct and were used in establishing the lines of this survey.

The monuments for corners are 1/2" steel pins. The West monuments were placed East of the true corners because true corners are in the irrigation canal.

Hugh C. Ingle
CIVIL ENGINEER.

Sept. 1961.

