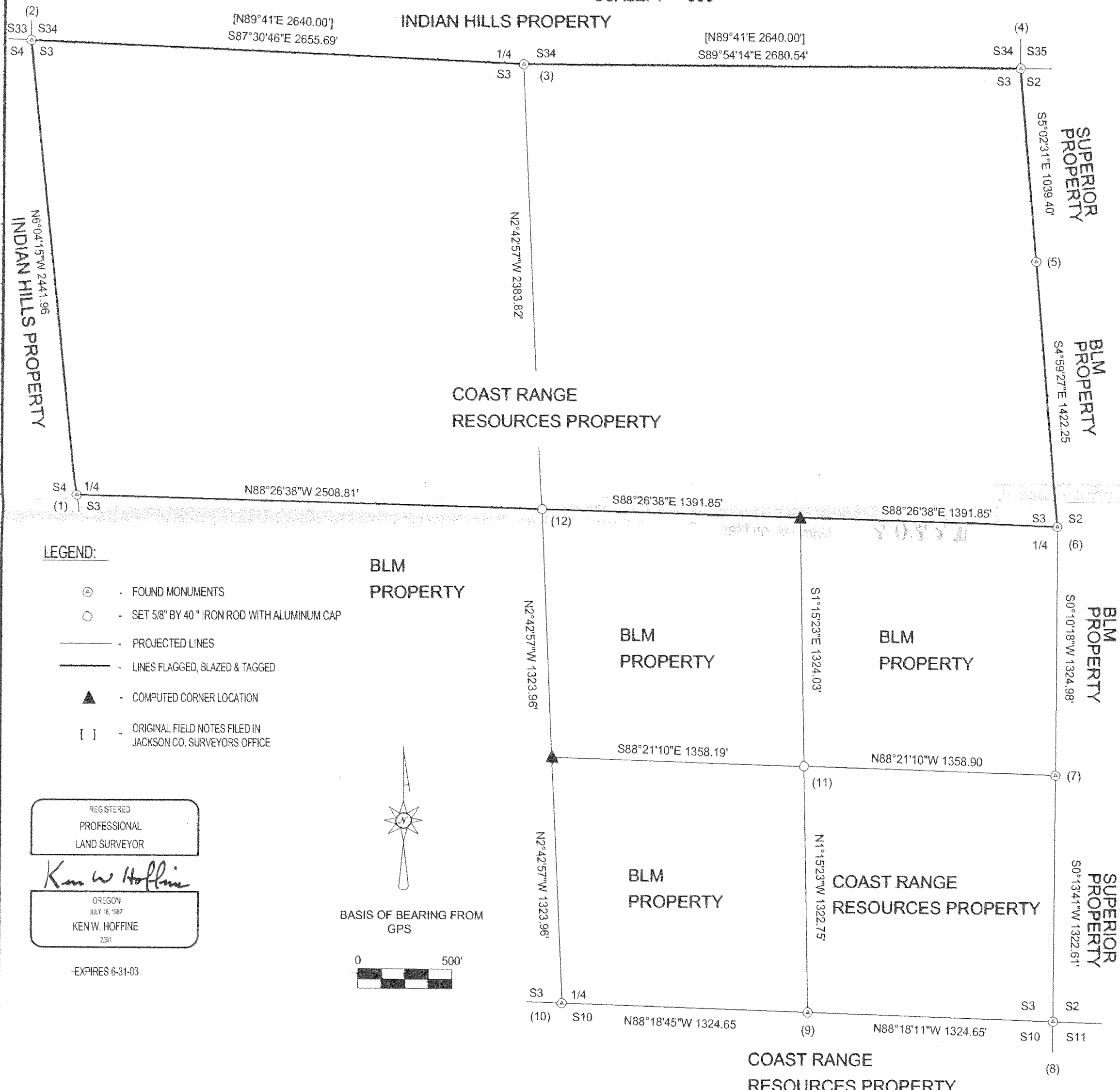
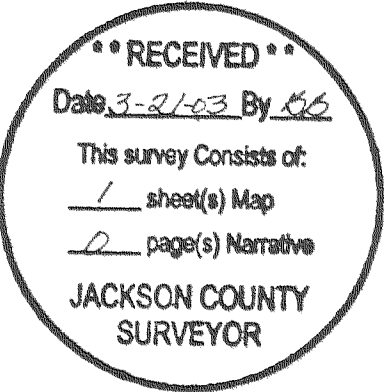


LONE ROCK TIMBER CO.

PO BOX 1127 ROSEBURG, OREGON 97470 M34 - 3E - 3 SURVEY
 SECTION 3, TOWNSHIP 34 SOUTH, RANGE 3 EAST, W.M. JACKSON COUNTY, OREGON
 DATE: FEB. 2003
 SCALE: 1" = 500'

NARRATIVE:

THIS SURVEY WAS INITIATED TO ESTABLISH PROPERTY LINES AND PROPERTY CORNERS FOR TIMBER CUTTING PURPOSES. WE INITIATED THIS SURVEY AT THE NORTHEAST CORNER OF SECTION 3 RUNNING A RANDOM CLOSED TRAVERSE AROUND THE EXTERIOR OF THE NORTH 1/2 OF SECTION 3. ALL SECTION AND ONE QUARTER CORNERS ON SECTION 3 ARE BLM REMONUMENTED BRASS CAPS SET FROM ORIGINAL EVIDENCE. WE THEN RAN AN OPEN RANDOM TRAVERSE TO THE SOUTH 1/4, SOUTHEAST SECTION CORNER, SOUTH 1/16 AND EAST 1/16 CORNERS LOCATED IN THE SOUTHEAST QUARTER OF SECTION 3. WE FOUND RAMBO ALUMINUM CAPS AT THE SOUTH AND EAST 1/16 PROPERLY SET AND REFERENCED BUT NOT RECORDED IN COUNTY RECORDS. IN THE 1990'S I SAW AN IRON ROD AND TWO B.T.'S MARKED FOR THE SOUTHEAST 1/16 CORNER BUT SUBSEQUENTLY THIS IRON ROD HAS BEEN REMOVED AND THE BEARING TREES MARKS SAWED OUT. WE USED GPS TO CHECK CLOSURE OF OUR OPEN TRAVERSES IN THE SOUTHEAST QUARTER OF SECTION 3. WE THEN COMPUTED THE SUBDIVISION OF SECTION 3 TO SET THE CENTER 1/4 AND RESET THE SOUTHEAST 1/16. THE RESET OF THE SOUTHEAST 1/16 IS WITHIN 0.8 FEET OF MY ESTIMATE OF THE LOCATION OF THE PREVIOUSLY SET CORNER. 1988 MEDCO LINE TAGS AND BLAZING ARE LOCATED ON THE PROPERTY LINE EAST AND SOUTH FROM THIS SOUTHEAST 1/16 CORNER. WE RIBBONED, BLAZED, PAINTED AND TAGGED THE PROPERTY LINES AROUND THE NORTH HALF OF SECTION 3. THIS SURVEY WAS DONE WITH A NIKON DTM 450 AND TRIMBLE GPS SURVEY EQUIPMENT WITH GARY ANGIOLET, MARK DVORSCAK AND IGNACIO ROMAN ASSISTING ME.



CORNER INFORMATION

- THE FOLLOWING IS A RECORD OF ALL CORNERS FOUND OR SET DURING THE COURSE OF THIS SURVEY:
- 1) THE WEST QUARTER CORNER OF SECTION 3
 FOUND 1964 BLM BRASS CAP IN GOOD CONDITION.
 -- 13" DOUGLAS FIR BEARS S40 1/2"E, 28.5 FEET (RECORD S42"E, 29.04 FEET) HEALED FACE, NO TAG
 -- 22" DOUGLAS FIR BEARS N49 1/2"W, 50.1 FEET (RECORD N51"W, 50.16 FEET) HEALED FACE, NO TAG
 -- 37" DOUGLAS FIR BEARS S8 1/2"E, 13.6 FEET (NO RECORD TAG READS N9 1/2"W, 12.3 FEET) HEALED FACE
 CORNER LIES ON FLAT GROUND APPROXIMATELY 400 FEET WEST OF THE BUTTE FALLS-PROSPECT HIGHWAY.
 - 2) THE NORTHWEST SECTION CORNER OF SECTION 3
 FOUND 1964 BLM BRASS CAP IN GOOD CONDITION.
 -- 14" YEW BEARS S44 1/2"E, 39.1 FEET (RECORD S44 1/4"E, 39.08 FEET) VISIBLE SCRIBING AND TAG
 -- 22" WHITE FIR BEARS S70 1/2"W, 25.2 FEET (RECORD BOTH WHITE FIR AND HEMLOCK S69 3/4"W, 25.0 FEET) HEALED FACE AND TAG
 -- 49" DOUGLAS FIR BEARS N71 3/4"W, 33.4 FEET (RECORD N72"W, 32.75 FEET) HEALED FACE AND TAG
 -- 18" WHITE FIR BEARS N6 3/4"W, 86.6 FEET (RECORD N8"W, 86.46 FEET) HEALED FACE AND TAG
 -- 26" FIR STUMP BEARS N69"E, 25.1 FEET (RECORD N70"E, 24.1 FEET TO FACE) HEALED VISIBLE SCRIBING AND TAG
 CORNER LIES ON FLAT GROUND IN MOUND OF STONES.
 - 3) THE NORTH QUARTER CORNER OF SECTION 3
 FOUND 1964 BLM BRASS CAP IN GOOD CONDITION.
 -- 24" DOUGLAS FIR STUMP BEARS S36"E, 35.3 FEET (RECORD S39"E, 35.64 FEET) HEALED FACE, NO TAG
 -- 22" WHITE FIR BEARS N58 1/2"E, 16.4 FEET, WE SCRIBE T33S R3E 1/4 S34 BT AND TAG TREE
 CORNER LIES ON WEST FACING SLOPE APPROXIMATELY 150 FEET EAST OF OLD RAILROAD GRADE ROAD.
 - 4) THE NORTHEAST SECTION CORNER OF SECTION 3
 FOUND 1964 BLM BRASS CAP IN GOOD CONDITION.
 -- 13" CEDAR BEARS S31"E, 30.9 FEET (RECORD S33"E, 31.02 FEET) HEALED FACE AND TAG
 -- 17" CEDAR BEARS N84 1/2"W, 22.3 FEET (RECORD N86"W, 22.44 FEET) HEALED FACE AND TAG
 -- 28" WHITE FIR STUMP BEARS N6"E, 65.7 FEET (RECORD N6"E, 66.00 FEET) HEALED FACE
 -- 9" YEW BEARS N31 3/4"E, 64.8 FEET (NO RECORD, TAG READS S34"W, 64.2 FEET) VISIBLE SCRIBING AND BRASS WASHER IN FACE
 -- 9" DOUGLAS FIR BEARS S52 1/2"W, 53.6 FEET (NO RECORD TAG READS N60"E, 53.3 FEET) VISIBLE SCRIBING AND BRASS WASHER
 CORNER LIES ON MOUND OF DIRT APPROXIMATELY 100 FEET SOUTH OF OLD RAILROAD GRADE ROAD FROM MEDCO POND.
 - 5) THE NORTH 1/16 CORNER BETWEEN SECTIONS 2 AND 3
 FOUND RAMBO ALUMINUM CAP IN MOUND OF STONES.
 -- 12" DOUGLAS FIR BEARS S42 3/4"W, 35.6 FEET (NO RECORD, TAG READS N46"W, 35.57 FEET) HEALED FACE
 -- 7" DOUGLAS FIR BEARS N45"W, 16.8 FEET (NO RECORD, TAG READS S39"E, 16.8 FEET) HEALED FACE
 CORNER LIES ON 20% GRADE NORTH SLOPE IN MOUND OF STONES.
 - 6) THE EAST 1/4 CORNER OF SECTION 3
 FOUND 1964 BLM BRASS CAP IN MOUND OF STONES.
 -- 23" DOUGLAS FIR BEARS S25 1/2"W, 25.4 FEET (RECORD S27"W, 25.74 FEET) HEALED FACE AND TAG
 -- 15" DOUGLAS FIR BEARS S74 1/4"E, 33.9 FEET (RECORD S73"E, 34.32 FEET) HEALED FACE AND TAG
 CORNER LIES ON SOUTH FACING SLOPE IN MOUND OF STONES.
 - 7) THE SOUTH 1/16 CORNER BETWEEN SECTIONS 2 AND 3
 FOUND RAMBO CAP IN GOOD CONDITION.
 -- 9" DOUGLAS FIR BEARS N78"E, 10.5 FEET (NO RECORD, TAG READS S84"W, 10.5 FEET) HEALED DOUBLE BLAZE
 -- 22" DOUGLAS FIR BEARS S19 1/2"W, 14.2 FEET, WE SCRIBE S 1/16 S3 B.T. AND TAG TREE
 -- 10" DOUGLAS FIR DOWN AND OUT OF POSITION, TAG READS S40"W, 33.7 FEET
 CORNER LIES ON NORTHWEST SLOPE APPROXIMATELY 175 FEET EAST OF END OF ROCK ROAD.
 - 8) THE SOUTHEAST SECTION CORNER OF SECTION 3
 FOUND 1964 BLM BRASS CAP IN MOUND OF STONES.
 -- 18" BURNED STUB BEARS N25 3/4"W, 39.3 FEET (RECORD N25"W, 38.28 FEET) VISIBLE SCRIBING
 -- 17" CEDAR BEARS N70 1/4"W, 6.3 FEET, NO RECORD OLD 1948 LOCATION TAG
 -- 25" DOUGLAS FIR BEARS N48 3/4"E, 38.2 FEET (RECORD N49"E, 37.62 FEET) WELL HEALED FACE AND TAG
 -- 15" WHITE FIR BEARS S25 1/2"E, 30.4 FEET (RECORD S25"E, 30.03 FEET) WELL HEALED FACE AND TAG
 -- 44" CEDAR STUMP BEARS S16 1/2"W, 75.0 FEET (RECORD S17"W, 74.58 FEET) WELL HEALED FACE AND TAG
 -- 17" WHITE FIR BEARS N51 1/2"W, 51.2 FEET (RECORD N51"W, 51.15 FEET) WELL HEALED FACE AND TAG
 CORNER LIES IN MOUND OF STONES 1.5 FEET ABOVE GROUND.
 - 9) THE EAST 1/16 CORNER BETWEEN SECTIONS 3 AND 10
 FOUND RAMBO ALUMINUM CAP IN MOUND OF STONES.
 -- 16" DOUGLAS FIR BEARS N79"W, 13.6 FEET (NO RECORD, TAG READS S77"E, 13.5 FEET) WELL HEALED DOUBLE BLAZES
 -- 8" YEW BEARS S31 3/4"W, 53.2 FEET (NO RECORD, TAG READS N33"E, 53.1 FEET) VISIBLE SCRIBING
 -- 11" CEDAR BEARS S8 3/4"E, 23.0 FEET (NO RECORD, TAG READS N5"W, 23.1 FEET) VISIBLE SCRIBING
 CORNERS LIES ON FLAT GROUND APPROXIMATELY 120 FEET NORTH OF ROCK ROAD.
 - 10) THE SOUTH QUARTER CORNER OF SECTION 3
 FOUND 1964 BLM BRASS CAP WITH STONE ALONG SIDE.
 -- 22" WHITE FIR BEARS N14 1/2"E, 53.7 FEET (RECORD N15"E, 53.46 FEET) WELL HEALED FACE AND TAG
 -- 24" WHITE FIR BEARS S6 1/2"W, 90.6 FEET (RECORD S6"W, 89.76 FEET) WELL HEALED FACE AND TAG
 -- 14" DOUGLAS FIR STUMP 4 FOOT TALL WITH LOCATION TAG BEARS S78 1/4"W, 4.6 FEET
 CORNER SITS ON SOUTH FACING SLOPE.

11) THE SOUTHEAST 1/16 CORNER OF SECTION 3
 SET 5/8" X 40" IRON ROD WITH 2 1/2" ALUMINUM CAP MARKED LONE ROCK TIMBER SE 1/16 S 3 2003 PLS 2291. IN MOUND OF STONES, 0.3 FT. ABOVE GROUND.
 -- 14" WHITE FIR BEARS S1 1/2"W, 21.1 FEET, WE SCRIBE SE 1/16 S3 BT IN PARTIALLY HEALED SAWED OUT FACE AND TAG TREE.
 -- 16" WHITE FIR BEARS N80 1/2"E, 55.9 FEET WE SCRIBE SE 1/16 S3 BT AND TAG TREE
 -- 33" WHITE FIR BEARS N86 1/2"E, 93.1 FEET WITH CHOPPED OUT FACE WE TAG TREE
 CORNER LIES ON FLAT GROUND IN MOUND OF STONES.

12) THE CENTER 1/4 CORNER OF SECTION 3
 SET 5/8" X 40" IRON ROD WITH 2 1/2" ALUMINUM CAP MARKED LONE ROCK TIMBER C 1/4 S 3 2003 PLS 2291. WITH LARGE STONE ON NORTH SIDE OF CAP, 0.4 FT. ABOVE GROUND.
 -- 13" CEDAR BEARS S51 1/4"W, 11.7 FEET, WE SCRIBE C1/4 S3 BT AND TAG TREE
 -- 11" DOUGLAS FIR BEARS N29 1/4"W, 18.9 FEET WE SCRIBE C1/4 S3 BT AND TAG TREE
 -- 14" WHITE FIR BEARS N29 1/4"W, 55.9 FEET WE SCRIBE C1/4 S3 BT AND TAG TREE
 -- 13" DOUGLAS FIR BEARS N84 1/4"E, 45.5 FEET WE SCRIBE C1/4 S3 BT AND TAG TREE
 CORNER LIES ON FLAT GROUND APPROX. 36 FT. WEST OF CENTERLINE OF OLD RAILROAD GRADE ROAD.