

LEGEND:

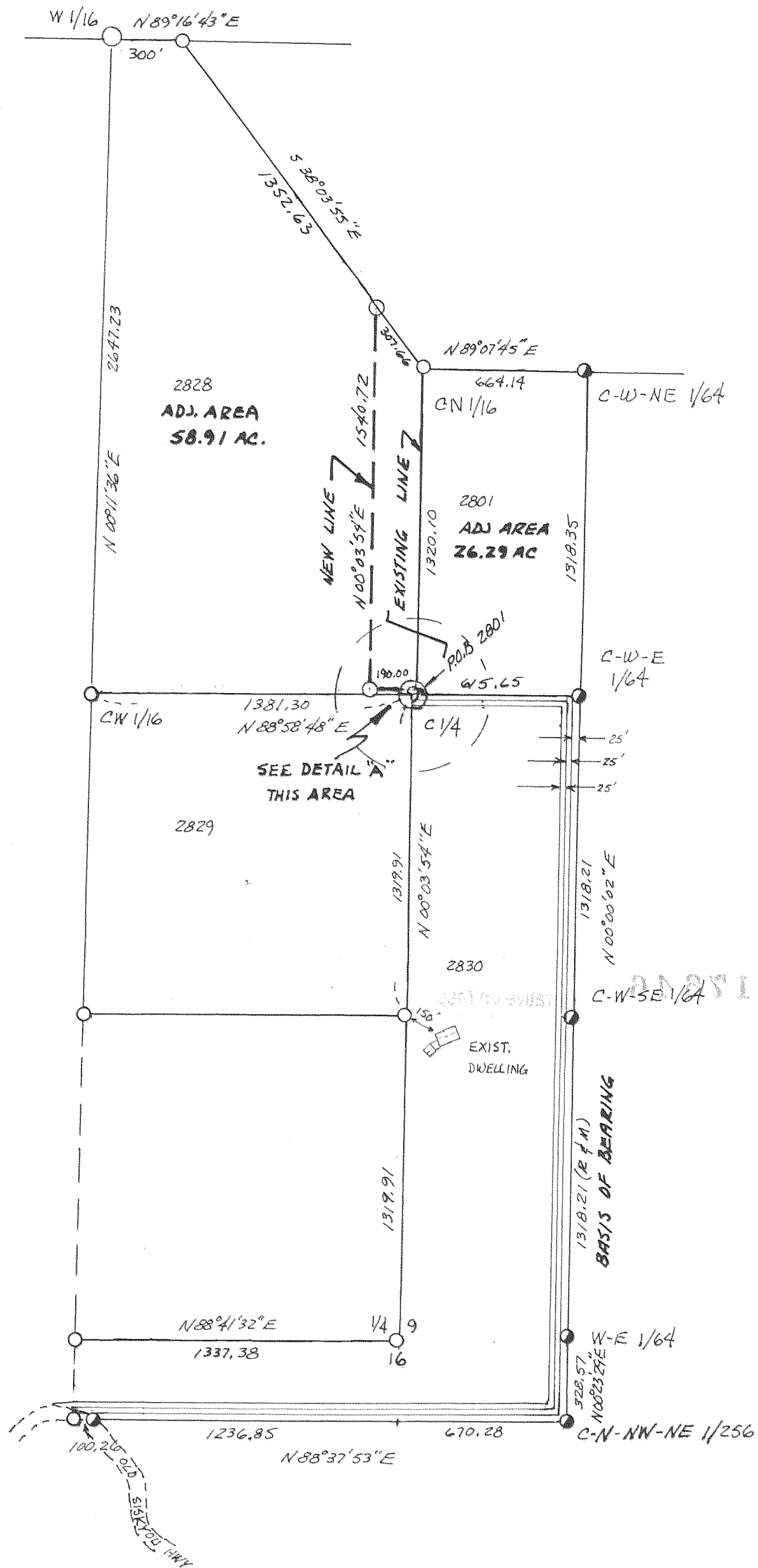
- FD. 1 1/2" GALV. I.P. W/BRESS DISK
LS 2052
- CALC. POSITION ONLY
NO MON FOUND OR SET

SCALE 1"=500'
OCT. 2002

REGISTERED
PROFESSIONAL
LAND SURVEYOR

Darryl Niemi

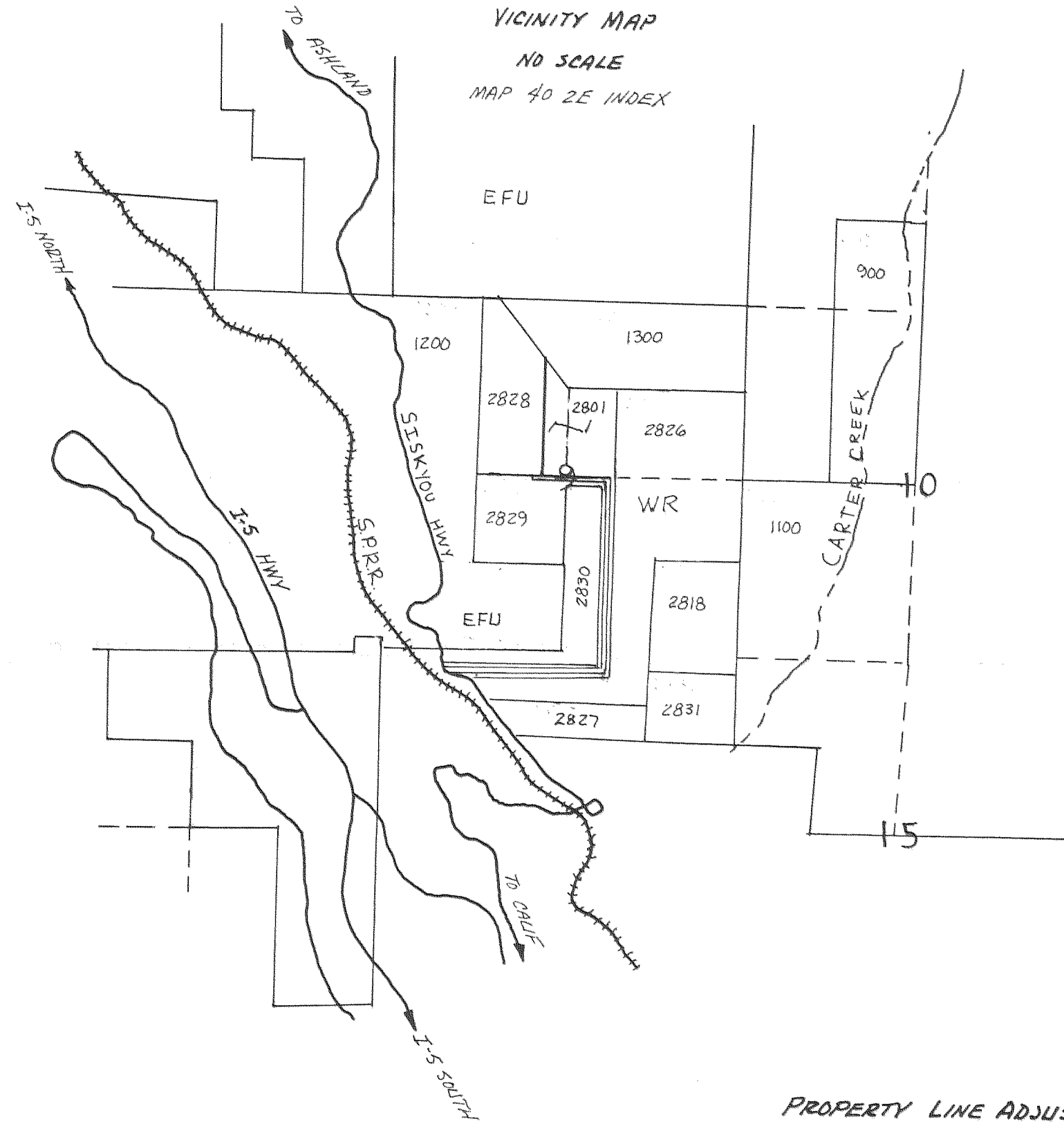
OREGON
JANUARY 25, 1980
DARRYL J. NIEMI
1868
RENEW 12-31-02



NARRATIVE:

THE PURPOSE OF THIS SURVEY AND MAP WAS TO SHOW THE AREA OF THE APPROVED PROPERTY LINE ADJUSTMENT OF TAX LOTS 2828 AND 2801. A FIELD SURVEY WAS MADE TO TIE THE EXISTING MONUMENTS FOUND. HOLDING THESE MONUMENTS AS RECORD AND A BASIS OF BEARING PER THE SURVEY BY JOHN MINOR FOR AL GRAY DATED JULY 1994, I WAS ABLE TO COMPLETE THE BREAKDOWN OF SECTION 9, AND CALCULATE THE AREA OF THE LINE ADJUSTMENT. NO MONUMENTS WERE FOUND OR SET AT THE NEW POSITIONS AT THIS TIME.

VICINITY MAP
NO SCALE
MAP 40 2E INDEX



PROPERTY LINE ADJUSTMENT
LYING WITHIN THE
N 1/2 OF SECTION 9, T40S, R2E, W1M,
JACKSON COUNTY, OR.

BY: B&D SURVEYS LTD. FOR: MOUNTAIN PARK DEVELOPMENT
17225 MOUNTAIN DRIVE 953 EMIGRANT CREEK ROAD
BROOKINGS, OR 97415 ASHLAND, OR 97520
(541) 251-1794 (CELL)

APPROVED BY THE JACKSON COUNTY DEPARTMENT OF
PLANNING AND DEVELOPMENT (FILE NO. 2002-56-PLA)

BY *R. Niemi* DATE 12/27 2002

