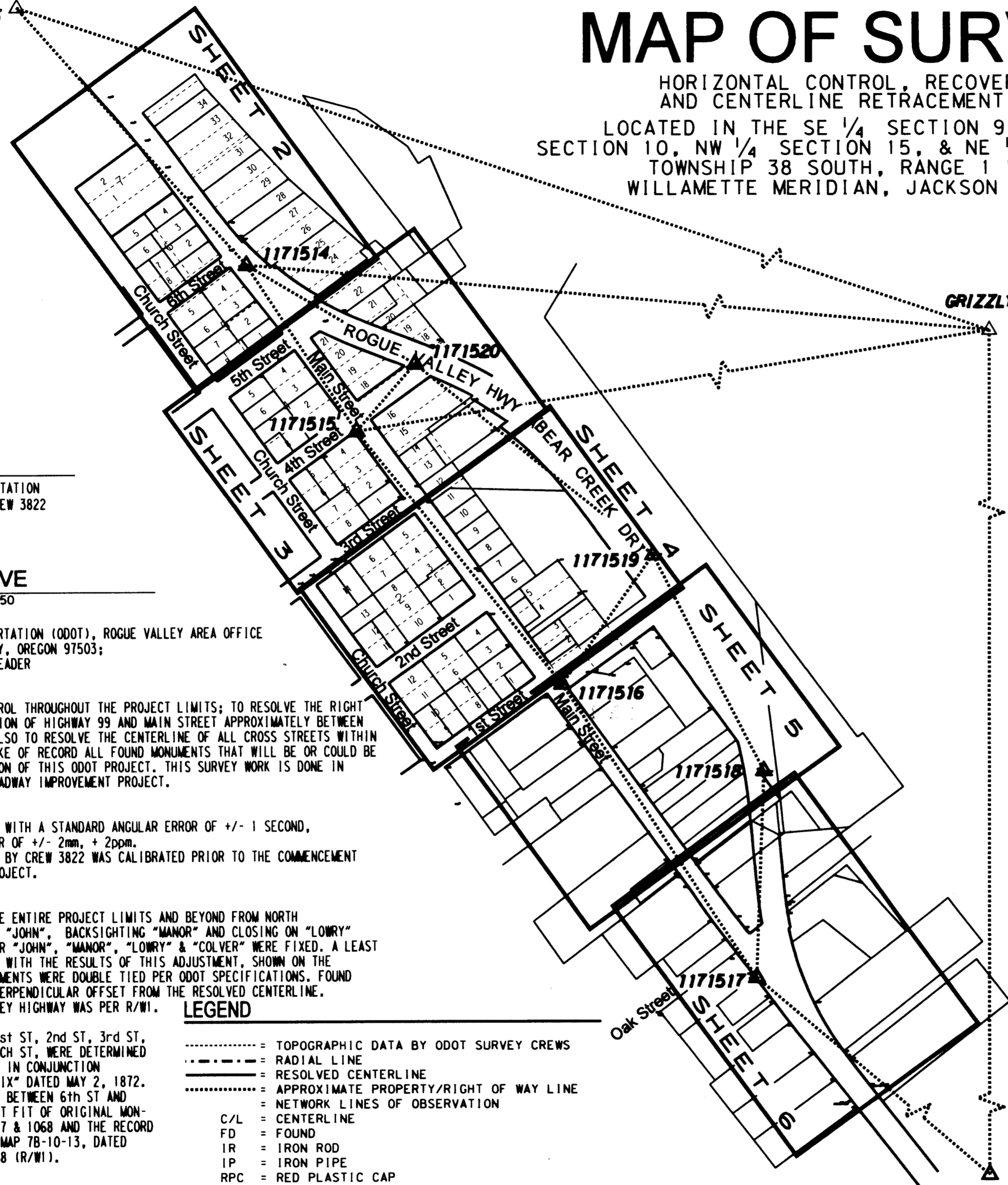


# MAP OF SURVEY

HORIZONTAL CONTROL, RECOVERY,  
AND CENTERLINE RETRACEMENT MAP  
LOCATED IN THE SE 1/4 SECTION 9, SW 1/4  
SECTION 10, NW 1/4 SECTION 15, & NE 1/4 SECTION 16  
TOWNSHIP 38 SOUTH, RANGE 1 WEST,  
WILLAMETTE MERIDIAN, JACKSON COUNTY

\*This survey has  
7 sheets. Available  
upon request.  
Good 1

•• RECEIVED ••  
DATE 10-30-02 BY db  
This survey consists of:  
7 sheet(s) Map  
0 page(s) Narrative  
JACKSON COUNTY  
SURVEYOR



**SURVEYOR**  
OREGON DEPARTMENT OF TRANSPORTATION  
ROGUE VALLEY AREA OFFICE - CREW 3822  
200 ANTELOPE ROAD  
WHITE CITY, OREGON 97503

**SURVEY NARRATIVE**  
TO COMPLY WITH O.R.S. 209.250  
FOR:  
OREGON DEPARTMENT OF TRANSPORTATION (ODOT), ROGUE VALLEY AREA OFFICE  
200 ANTELOPE ROAD, WHITE CITY, OREGON 97503;  
DEBBIE TIMMS, PROJECT TEAM LEADER

**PURPOSE:**  
TO ESTABLISH HORIZONTAL CONTROL THROUGHOUT THE PROJECT LIMITS; TO RESOLVE THE RIGHT OF WAY CENTERLINE FOR A PORTION OF HIGHWAY 99 AND MAIN STREET APPROXIMATELY BETWEEN 6th STREET AND OAK STREET; ALSO TO RESOLVE THE CENTERLINE OF ALL CROSS STREETS WITHIN THIS PROJECT AREA; AND TO MAKE OF RECORD ALL FOUND MONUMENTS THAT WILL BE OR COULD BE THREATENED BY THE CONSTRUCTION OF THIS ODOT PROJECT. THIS SURVEY WORK IS DONE IN PREPARATION OF A PROPOSED ROADWAY IMPROVEMENT PROJECT.

**EQUIPMENT:**  
LEICA TCA 1800 TOTAL STATION WITH A STANDARD ANGULAR ERROR OF +/- 1 SECOND,  
AND A STANDARD DISTANCE ERROR OF +/- 2mm, + 2ppm.  
ALL SURVEYING EQUIPMENT USED BY CREW 3822 WAS CALIBRATED PRIOR TO THE COMMENCEMENT OF ANY SURVEYING FOR THIS PROJECT.

**PROCEDURE:**  
A NETWORK WAS RUN THROUGH THE ENTIRE PROJECT LIMITS AND BEYOND FROM NORTH TO SOUTH, BEGINNING ON POINT "JOHN", BACKSIGHTING "MANOR" AND CLOSING ON "LOWRY" AND "COLVER". COORDINATES FOR "JOHN", "MANOR", "LOWRY" & "COLVER" WERE FIXED. A LEAST SQUARES ADJUSTMENT WAS USED, WITH THE RESULTS OF THIS ADJUSTMENT, SHOWN ON THE FACE OF THIS MAP. FOUND MONUMENTS WERE DOUBLE TIED PER ODOT SPECIFICATIONS. FOUND MONUMENTS ARE SHOWN WITH A PERPENDICULAR OFFSET FROM THE RESOLVED CENTERLINE. STATIONING OF THE ROGUE VALLEY HIGHWAY WAS PER R/WI.

- LEGEND**
- TOPOGRAPHIC DATA BY ODOT SURVEY CREWS
  - - - - - RADIAL LINE
  - RESOLVED CENTERLINE
  - APPROXIMATE PROPERTY/RIGHT OF WAY LINE
  - NETWORK LINES OF OBSERVATION
  - CENTERLINE
  - C/L = CENTERLINE
  - FD = FOUND
  - IR = IRON ROD
  - IP = IRON PIPE
  - RPC = RED PLASTIC CAP
  - YPC = YELLOW PLASTIC CAP
  - AC = ALUMINUM CAP
  - O.U. = ORIGIN OF MONUMENT UNDETERMINED
  - R/WI = ODOT RIGHT OF WAY MAP 7B-10-13, DATED NOV. 1951
  - R = RECORD DATA AS NOTED
  - 11715nn ▲ = SET NETWORK MONUMENT
  - nnn □ = FOUND MONUMENT, SEE MONUMENT DESCRIPTION TABLE
  - = MONUMENT NOT RECOVERED
  - POP = PLAT OF PHOENIX, DATED MAY 2, 1872

THE CENTERLINE OF MAIN ST, 1st ST, 2nd ST, 3rd ST, 4th ST, 5th ST, 6th ST, CHURCH ST, WERE DETERMINED BY FOUND MONUMENTS OF RECORD IN CONJUNCTION WITH THE "TOWN PLAT OF PHOENIX" DATED MAY 2, 1872. THE CENTERLINE OF HIGHWAY 99 BETWEEN 6th ST AND OAK ST WAS RESOLVED BY A BEST FIT OF ORIGINAL MONUMENTS 1024, 1025, 1058, 1067 & 1068 AND THE RECORD HIGHWAY CENTERLINE PER ODOT MAP 7B-10-13, DATED NOV. 1951 & REVISED JAN. 1968 (R/WI).

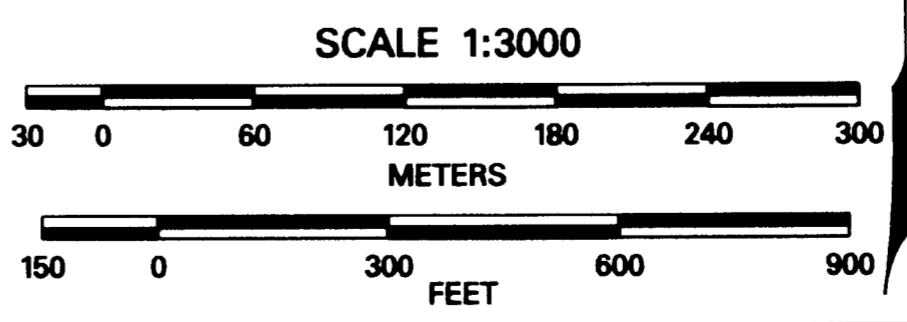
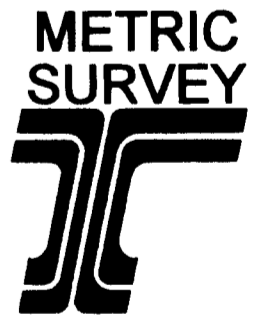
LISCAD Plus Report: Least Squares Adjustment Report -  
Variance Factor: 3.59  
Adjusted Coordinates 95% Confidence Limits

Pt ID	Adjusted Coordinates		95% Confidence Limits		Error Ellipse		Orientation
	East	North	East	North	Semi Major	Semi Minor	
1171501	1306070.311	73607.546	0.009	0.007	0.009	0.007	66°21'41"
1171502	1306299.822	73372.447	0.013	0.010	0.014	0.009	61°39'41"
1171503	1306517.672	73038.797	0.018	0.014	0.020	0.011	61°20'33"
1171504	1306711.123	72821.244	0.022	0.016	0.024	0.012	58°24'38"
1171505	1306907.616	72508.433	0.027	0.020	0.031	0.014	56°51'18"
1171506	1307097.935	72307.190	0.030	0.024	0.035	0.015	54°21'01"
1171507	1307312.264	72023.280	0.034	0.027	0.040	0.015	53°06'51"
1171508	1307552.730	71785.921	0.036	0.030	0.044	0.016	51°28'24"
1171509	1307740.527	71558.048	0.037	0.032	0.046	0.016	50°34'01"
1171510	1307956.451	71367.600	0.037	0.032	0.046	0.017	49°35'13"
1171511	1308142.787	71142.431	0.036	0.033	0.045	0.017	48°31'57"
1171512	1308406.616	70946.227	0.034	0.032	0.043	0.017	47°51'49"
1171513	1308561.890	70764.169	0.031	0.031	0.040	0.017	46°01'01"
1171514	1308821.355	70471.993	0.026	0.028	0.035	0.016	41°55'48"
1171515	1308920.102	70321.683	0.023	0.027	0.032	0.016	37°45'22"
1171516	1309104.048	70092.613	0.018	0.025	0.027	0.014	27°31'36"
1171517	1309278.403	69827.248	0.011	0.022	0.022	0.011	7°17'24"
1171518	1309285.872	70013.503	0.015	0.022	0.023	0.014	20°38'28"
1171519	1309187.005	70209.375	0.020	0.023	0.027	0.016	36°11'35"
1171520	1308973.082	70382.436	0.024	0.026	0.032	0.016	41°17'42"
1171521	1309487.635	69588.787	0.008	0.017	0.017	0.007	164°12'32"
GRIZZLY	1314519.704	72647.259	0.989	0.210	1.008	0.086	78°59'52"

**SURVEY DATA**  
FIELD WORK WAS COMPLETED IN SEPTEMBER, 2002  
BASIS OF BEARING: OREGON SOUTH ZONE, NAD83 (91)  
COORDINATES SHOWN ARE LOCAL DATUM PLANE (LDP)  
THE COMBINED SCALE FACTOR (CSF) OF 0.99994213 IS DERIVED FROM THE POSITION OF CONTROL POINT "FERNS"; AND IS THE SAME CSF USED FOR FILED SURVEY No. 17166. CONVERGENCE AT SAID POINT IS -01°33'51.7". TO CONVERT FROM LDP TO OREGON STATE PLANE (SPC), USE THE FOLLOWING FORMULA: LDP x CSF = SPC.

TOPOGRAPHIC DATA SHOWN ON THIS SURVEY WAS GATHERED FROM AN AERIAL FLIGHT PERFORMED IN SPRING, 2002 AND WAS PROCESSED AND PROVIDED BY THE ODOT GEOMETRICS UNIT IN SALEM. THE TOPOGRAPHIC DATA SHOWN IS INTENDED TO BE USED AS A REFERENCE ONLY, PORTIONS OF SAID DATA HAS BEEN REMOVED FOR CLARITY.

PROPERTY LINES SHOWN ON THIS MAP ARE APPROXIMATE.



OREGON DEPARTMENT OF TRANSPORTATION  
**HORIZONTAL CONTROL, MONUMENT RECOVERY AND CENTERLINE RETRACEMENT MAP**

REGISTERED PROFESSIONAL LAND SURVEYOR  
*John R. Pariani*  
OREGON JULY 13, 1999  
JOHN R. PARIANI  
#51382LS  
EXPIRES: DEC. 31, 2002

6th STREET - OAK STREET  
DOWNTOWN PHOENIX COUPLER  
JACKSON COUNTY

ROGUE VALLEY AREA OFFICE  
200 ANTELOPE ROAD  
WHITE CITY, OREGON 97503  
DATE: OCTOBER 30, 2002  
CADD File: 09822MRM1.DGN

1 of 7

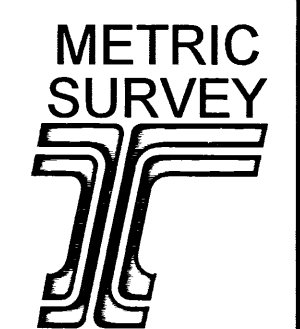
LOCAL DATUM PLANE MONUMENT COORDINATES (METRIC)

PT ID	EASTING	NORTHING	DESCRIPTION/REFERENCE
500	1309269.107	69870.989	SET PK NAIL & SHINER
501	1308979.493	70024.439	SET 250mm SPIKE
502	1309039.308	70156.100	SET PK NAIL & SHINER IN SIDEWALK
503	1308962.835	70260.766	SET PK NAIL & SHINER
504	1308852.590	70387.699	SET PK NAIL & SHINER IN CURB
505	1309169.327	70126.142	SET PK NAIL & SHINER
1000	1309173.879	69999.886	FD 5/8" IR PER CS 5022
1001	1309176.722	69995.935	FD 5/8" IR PER CS 5022
1002	1309223.288	69931.786	FD 5/8" IR PER CS 317
1003	1309231.455	69920.511	FD 5/8" IR PER CS 317
1004	1309240.126	69908.630	FD 1" O.D. IP PER CS 317
1005	1309208.483	69921.082	FD 2" O.D. IP PER CS 317
1006	1309209.085	69920.256	FD 1 1/2" O.D. IP PER CS 317
1007	1309223.992	69930.820	FD 1" WIDE IRON BAR PER CS 317
1008	1309216.695	69909.767	FD 3/4" IP PER CS 317
1009	1309238.334	69878.943	FD 5/8" IR PER CS 317, BENT WEST
1010	1309090.622	70083.489	FD 5/8" IR IN MON CASE, BENT EAST
1011	1309111.832	70054.341	FD 1 1/4" O.D. IP
1012	1309111.954	70053.833	FD 1 1/4" O.D. IP
1013	1309122.450	70039.226	FD IRON BOLT PER CS 2700
1014	1309123.949	70037.685	FD 5/8" IR W/YPC "MCMAHAN LS 1913", O.U.
1015	1309139.810	70015.713	FD 5/8" IR PER CS 2700
1016	1309260.230	69881.980	FD 3/4" IP PER CS 186
1017	1309250.905	69862.123	FD 5/8" IR, REFERENCED ON CS 13184
1018	1309255.216	69846.233	FD 5/8" IR W/YPC "DW EDWARDS LS 741" PER CS 13184
1019	1309274.499	69830.751	FD 5/8" IR W/IPC "DA EDWARDS LS 2839" PER CS 14001
1020	1309307.741	69786.556	FD BRASS TACK/WASHER "LS 2339" PER CS 13184
1021	1309348.394	69734.595	FD 5/8" IR W/YPC "LS 944" PER CS 10569
1022	1309329.562	69758.670	FD 5/8" IR PER CS 10569
1023	1309367.502	69709.681	FD 5/8" IR PER CS 10569
1024	1309363.206	69715.801	FD 5/8" IR PER CS 11016
1025	1309380.023	69728.948	FD 5/8" IR PER ODOT MAP 7B-10-13
1026	1309355.857	69760.614	FD 5/8" IR W/YPC PER CS 13913, NOT LEDGIBLE
1027	1309329.939	69804.019	FD 3/4" O.D. IP W/TACK PER CS 541
1028	1309306.198	69886.518	FD 5/8" IR W/YPC "LJ FRIAR & ASSOC" PER CS 13913
1029	1309199.550	69933.389	FD 5/8" IR W/YPC "LS 744" PER CS 15137
1030	1308976.033	70272.715	FD 5/8" IR W/YPC "THOMAS LS 505" PER CS 7584
1031	1308986.809	70257.889	FD 5/8" IR W/YPC "THOMAS LS 505" PER CS 7584
1032	1309029.003	70197.872	FD LEAD PLUG W/TACK PER CS 9058
1033	1309031.663	70196.042	FD 5/8" IR W/YPC "EL SWAIN LS 759" PER CS 9058
1034	1309130.876	70103.852	FD 1/2" IR, O.U.
1035	1309130.872	70103.827	FD 5/8" IR PER CS 7575
1036	1309146.946	70100.953	FD 5/8" IR PER CS 7575
1037	1309161.654	70111.600	
1038	1309167.710	70130.461	FD 5/8" IR W/YPC "LJ FRIAR & ASSOC" PER CS 15981
1039	1309186.952	70144.394	FD 5/8" IR PER CS 7575
1040	1309193.915	70134.819	FD 5/8" IR PER CS 7575
1041	1309204.843	70119.705	FD 5/8" IR W/YPC "LJ FRIAR & ASSOC" PER CS 15981
1042	1309058.088	70128.412	FD 5/8" IR PER CS 1949
1043	1308934.838	70095.775	
1044	1308870.332	70184.739	
1045	1308998.060	70017.092	FD 5/8" IR W/IPC "R BRAUGHTON LS 2657" PER CS 15271 (NOT SHOWN)
1046	1309010.586	69984.453	FD BRASS DISK IN WATER VALVE CASE-SEE SHEET 5 FOR DESCRIPTION
1047	1308990.701	70034.401	FD LEAD PLUG IN 25cmX27cm CONC PER TOWN PLAT OF PHOENIX
1048	1308988.685	70021.569	FD PK NAIL REFERENCED ON CS 9058
1049	1308961.234	70262.005	

LOCAL DATUM PLANE MONUMENT COORDINATES (METRIC)

PT ID	EASTING	NORTHING	DESCRIPTION/REFERENCE
1050	1308950.476	70276.901	FD 5/8" IR PER CS 5624
1051	1308888.774	70299.934	FD 5/8" IR PER CS 2787
1052	1308834.793	70373.978	FD 5/8" IR W/YPC "DW EDWARDS PLS 741" PER CS 12274
1053	1308810.783	70379.143	FD 5/8" IR W/IPC "BOYDEN RLS 281" PER CS 11651
1054	1308826.805	70390.808	FD 5/8" IR W/IPC "BOYDEN RLS 281" PER CS 11651
1055	1308909.972	70428.629	FD 5/8" IR W/YPC "CENTER PLS 1071" PER CS 15951
1056	1308883.089	70442.912	FD 5/8" IR W/YPC "CENTER PLS 1071" PER CS 15951
1057	1308779.327	70450.475	FD 1" IP PER CS 602
1058	1308816.889	70494.650	
1059	1309191.041	69796.716	FD 5/8" IR W/YPC "DW EDWARDS LS 741" PER CS 13184
1060	1309192.886	69794.307	FD 5/8" IR, O.U.
1061	1308996.149	70151.474	FD 5/8" IR W/YPC "JACKSON COUNTY" PER CS 7034
1062	1308966.510	70130.015	FD 5/8" IR PER CS 7034
1063	1308880.798	70192.328	FD 5/8" IR W/YPC "LJ FRIAR & ASSOC" PER CS 13970
1064	1308899.214	70194.410	FD 5/8" IR W/YPC PER CS 13970 (CAP NOT LEDGIBLE)
1065	1308912.724	70204.194	FD 5/8" IR W/YPC "LJ FRIAR & ASSOC" PER CS 13970
1066	1308899.979	70206.257	FD 2"x4" IRON BAR (WAGON STEP) WITH "X" REFERENCED ON CS 5624
1067	1308818.017	70495.638	FD 5/8" IR REFERENCED ON CS 1137
1068	1308816.782	70496.575	FD 5/8" IR REFERENCED ON CS 1137
1069	1308806.023	70511.366	FD 5/8" IR W/YPC (NOT LEDGIBLE) O.U.
1070	1309240.577	70070.308	FD 5/8" IR W/YPC "THOMAS LS 505" PER CS 7575
1071	1309100.776	70204.591	FD 5/8" IR W/YPC "LJ FRIAR & ASSOC" PER CS 14796
1072	1309123.041	70175.263	FD 5/8" IR W/YPC "LJ FRIAR & ASSOC" PER CS 14796
1073	1309123.032	70175.234	FD 5/8" IR W/YPC "LJ FRIAR & ASSOC" PER CS 14796
1074	1309044.908	70322.654	FD 5/8" IR W/YPC "LJ FRIAR & ASSOC" PER CS 14796
1075	1309028.523	70350.429	FD 5/8" IR W/YPC "LJ FRIAR & ASSOC" PER CS 14796
1076	1308997.766	70403.649	FD 5/8" IR W/YPC "DW EDWARDS LS 741" PER CS 10830
1077	1308988.719	70397.060	FD 5/8" IR W/YPC "DW EDWARDS LS 741" PER CS 10830
1078	1308942.835	70414.715	FD 5/8" IR W/YPC (NOT LEDGIBLE) PER CS 10830
1079	1309361.716	69753.600	FD 5/8" IR W/YPC "LJ FRIAR & ASSOC" PER CS 13913
1080	1309361.461	69753.490	FD 1/2" IR, O.U.
1081	1309305.311	69893.390	FD 5/8" IR W/YPC "LJ FRIAR PLS 961" PER CS 11016
1082	1309308.170	69895.456	FD 5/8" IR W/YPC "LJ FRIAR & ASSOC" PER CS 13913
1083	1309304.461	69900.178	FD 5/8" IR W/YPC (CAP NOT LEDGIBLE) PER CS 13913
1084	1309302.588	69918.053	FD 5/8" IR W/YPC "LJ FRIAR PLS 961" PER CS 11016
1085	1309148.896	70034.472	FD 5/8" O.D. IP PER CS 278
1086	1309293.794	69805.116	FD 5/8" IR W/YPC "DA EDWARDS LS 2339" PER CS 14001
1087	1309290.137	69809.992	FD 5/8" IR W/YPC (CAP NOT LEDGIBLE) PER CS 14001
1088	1308894.254	70421.885	FD 3" BRASS DISK "STA 360+47.26 PSC" IN CONCRETE PER CS 13510
1089	1308809.970	70486.432	FD 3" BRASS DISK "STA 363+97.40 PCS" IN CONCRETE PER CS 13510
1090	1308772.397	70534.400	FD 3" BRASS DISK "STA 365+97.40 PT" IN CONCRETE PER CS 13510
1091	1308752.486	70561.742	FD 3" BRASS DISK "STA 367+08.32 PS" IN CONCRETE PER CS 13510
1092	1308734.367	70586.240	FD 3" BRASS DISK "STA 368+08.32 PSC" IN CONCRETE PER CS 13510
1093	1308721.503	70602.142	FD 3" BRASS DISK "STA 368+75.46 PCS" IN CONCRETE PER CS 13510
1170	1308738.784	70428.527	FD 1/2"x2" IRON BAR PER CS 602 IN MONUMENT CASE
1171	1308846.240	70280.372	FD 5/8" IR IN MONUMENT CASE PER CS 5624
1172	1308846.277	70280.396	FD 5/8" IR IN MONUMENT CASE PER CS 9930
1171513	1308561.890	70764.169	SET 25mm BRASS DISK "ODOT CONTROL 11715-13"
1171514	1308821.355	70471.993	SET 25mm BRASS DISK "ODOT CONTROL 11715-14"
1171515	1308920.102	70321.683	SET 25mm BRASS DISK "ODOT CONTROL 11715-15"
1171516	1309104.048	70092.613	SET 25mm BRASS DISK "ODOT CONTROL 11715-16"
1171517	1309278.403	69827.248	SET 25mm BRASS DISK "ODOT CONTROL 11715-17"
1171518	1309285.872	70013.503	SET 16mm X 762mm IR W/AC "ODOT CONTROL 11715-18"
1171519	1309187.005	70209.375	SET 16mm X 762mm IR W/AC "ODOT CONTROL 11715-19"
1171520	1308973.082	70382.436	SET 16mm X 762mm IR W/AC "ODOT CONTROL 11715-20"
1171521	1309487.635	69588.787	SET 16mm X 762mm IR W/AC "ODOT CONTROL 11715-21"

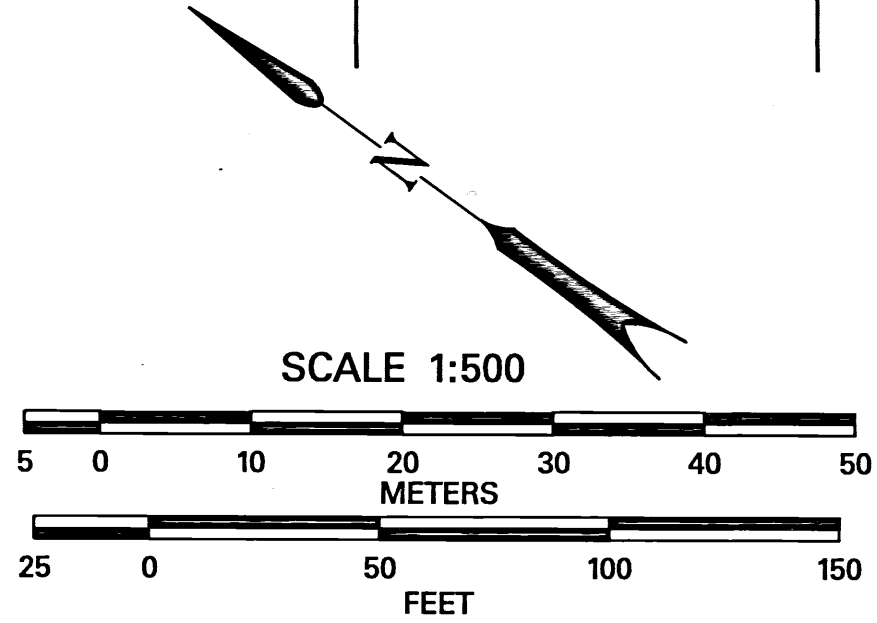
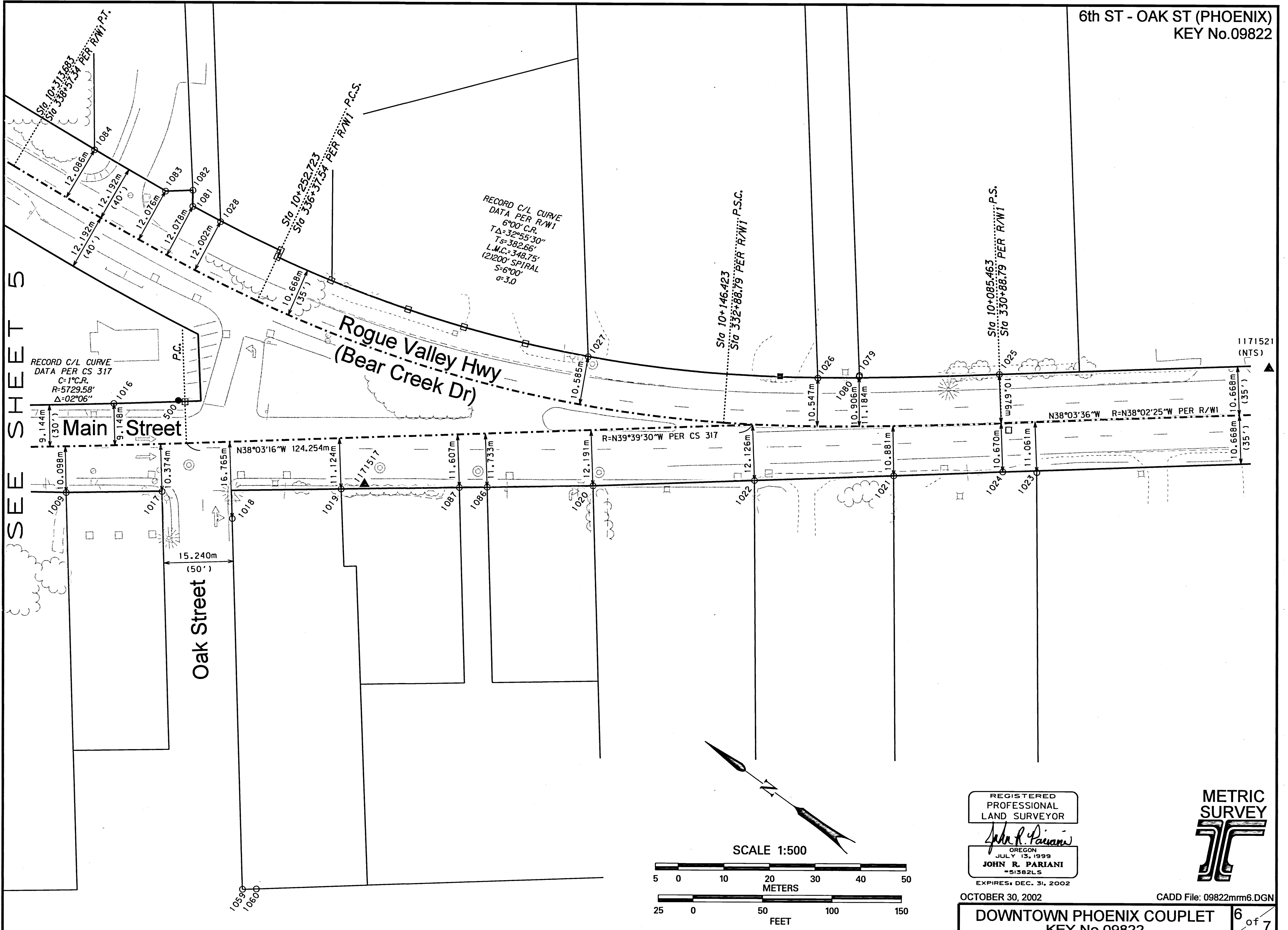
REGISTERED  
PROFESSIONAL  
LAND SURVEYOR  
*John R. Pariani*  
OREGON  
JULY 13, 1999  
JOHN R. PARIANI  
#51382LS  
EXPIRES: DEC. 31, 2002



OCTOBER 30, 2002 CADD File: 09822mm7.DGN

DOWNTOWN PHOENIX COUPLET  
KEY No.09822 7 of 7

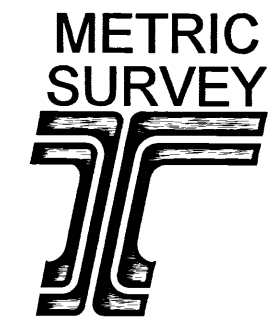
SEE SHEET 5



REGISTERED  
PROFESSIONAL  
LAND SURVEYOR

*John R. Pariani*

OREGON  
JULY 13, 1999  
JOHN R. PARIANI  
51382LS  
EXPIRES: DEC. 31, 2002



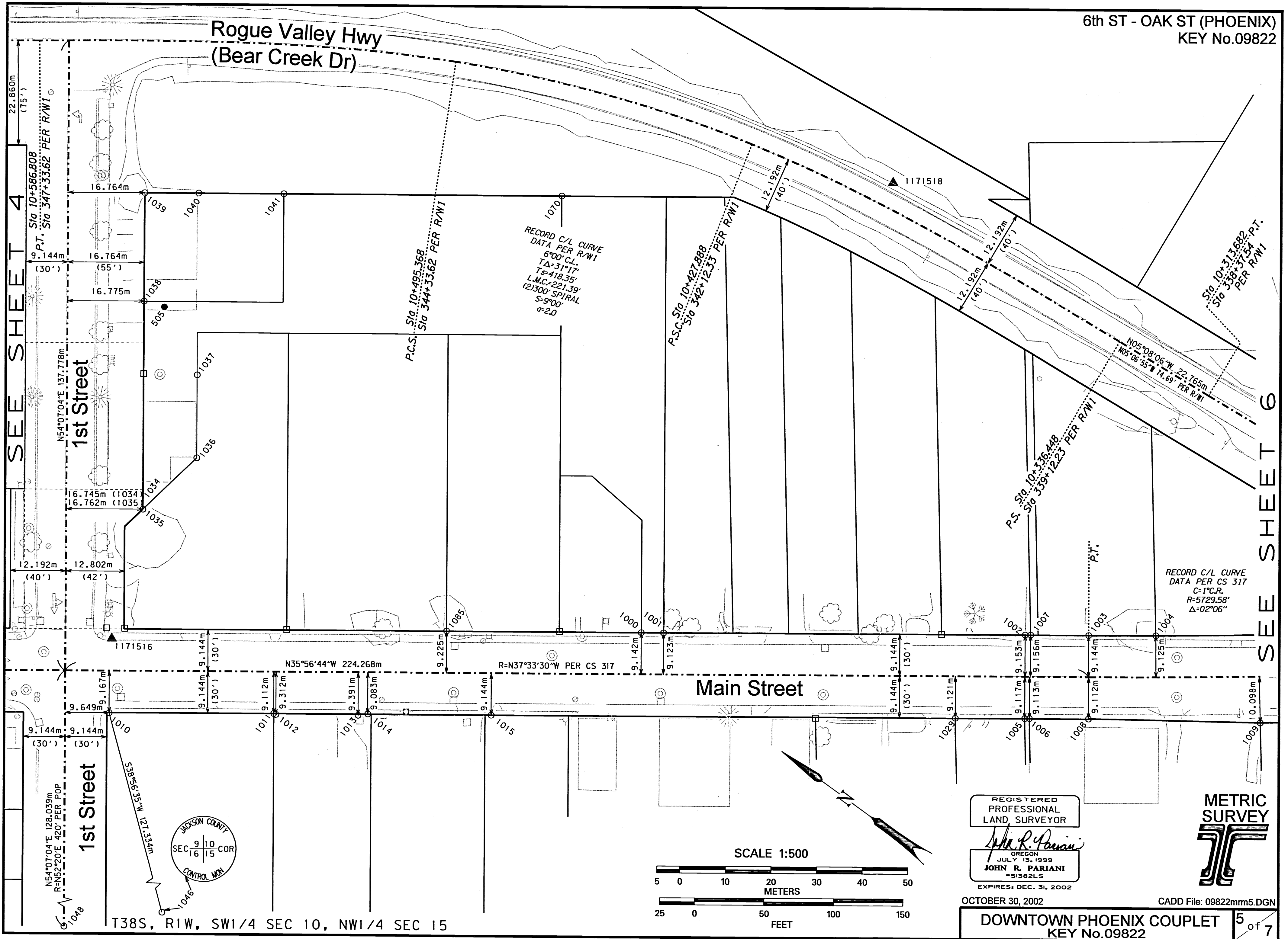
OCTOBER 30, 2002

CADD File: 09822mm6.DGN

DOWNTOWN PHOENIX COUPLET

KEY No.09822

6 of 7

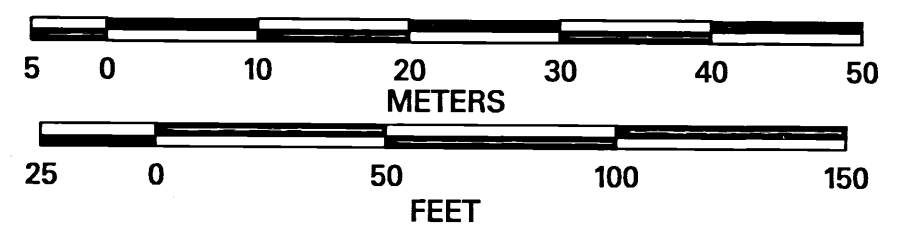


SEE SHEET 4

SEE SHEET 6

T38S, R1W, SW1/4 SEC 10, NW1/4 SEC 15

SCALE 1:500

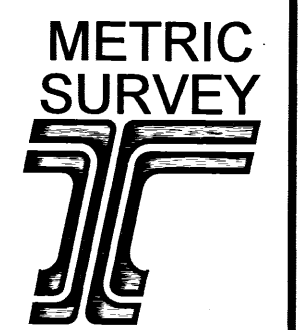


REGISTERED  
PROFESSIONAL  
LAND SURVEYOR

*John R. Pariani*

OREGON  
JULY 13, 1999  
JOHN R. PARIANI  
#51382LS

EXPIRES DEC. 31, 2002



OCTOBER 30, 2002 CADD File: 09822mm5.DGN

**DOWNTOWN PHOENIX COUPLET** 5 of 7  
KEY No.09822

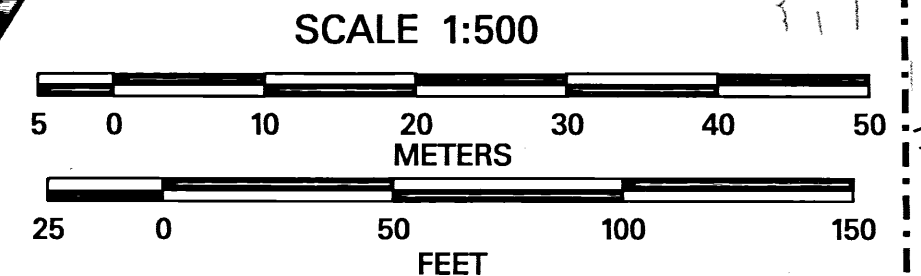
SEE SHEET 3

6th ST - OAK ST (PHOENIX)  
KEY No.09822

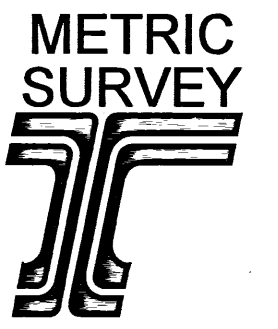
RECORD C/L CURVE  
DATA PER R/W1  
6'00" C/L  
TΔ=32'48"  
TΔ=30'57"  
L.M.C.=243.89'  
(2300' SPIRAL  
S=9'00"  
D=20'

Sta 10+756.015  
P.S. Sta 352+88.65 PER R/W1

Sta 10+664.575  
P.S. Sta 349+88.65 PER R/W1



REGISTERED  
PROFESSIONAL  
LAND SURVEYOR  
*John R. Pariansi*  
OREGON  
JULY 13, 1999  
JOHN R. PARIANI  
#51382LS  
EXPIRES: DEC. 31, 2002

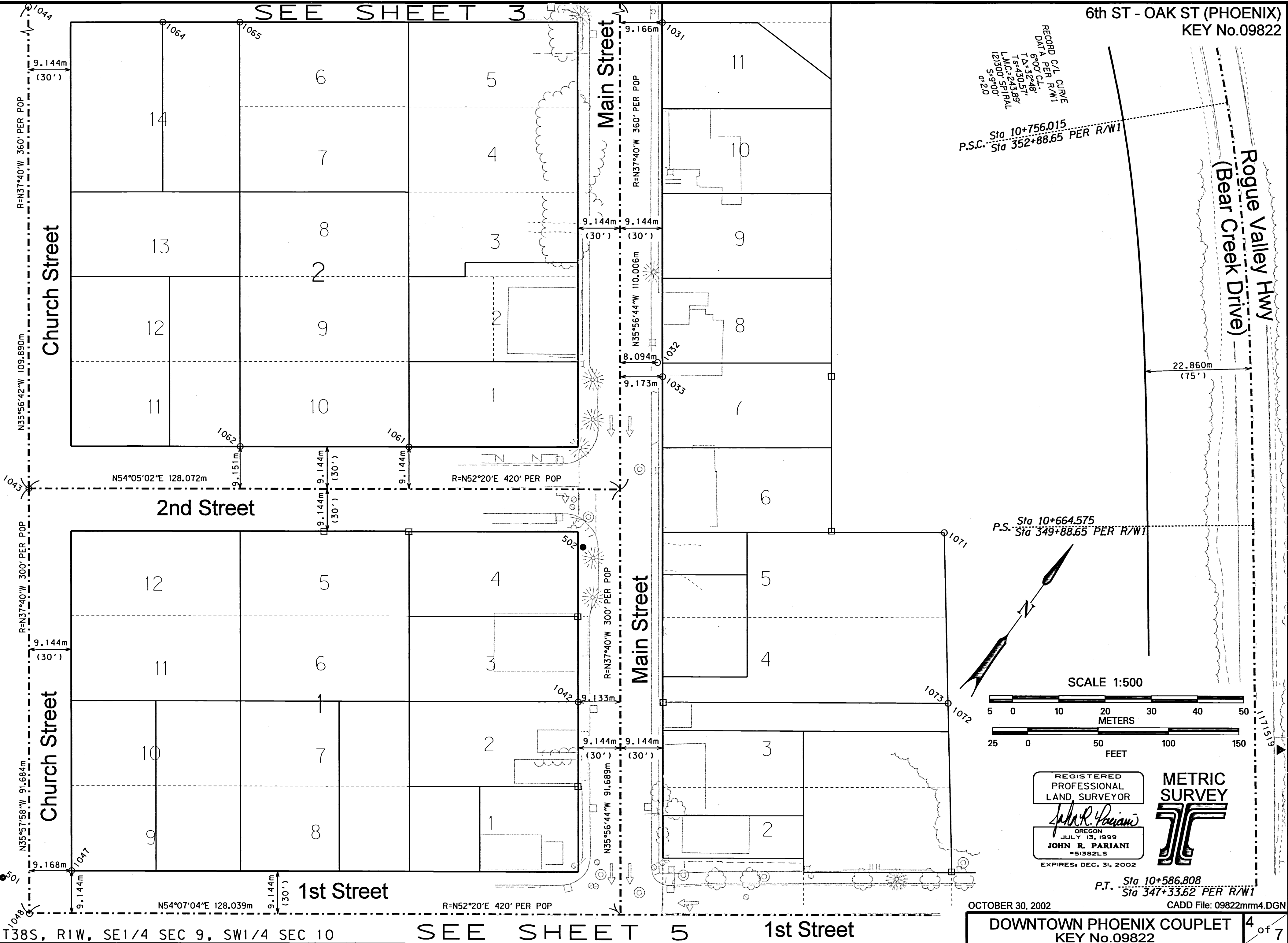


P.T. Sta 10+586.808  
Sta 347+33.62 PER R/W1

OCTOBER 30, 2002 CADD File: 09822mrm4.DGN

DOWNTOWN PHOENIX COUPLET  
KEY No.09822

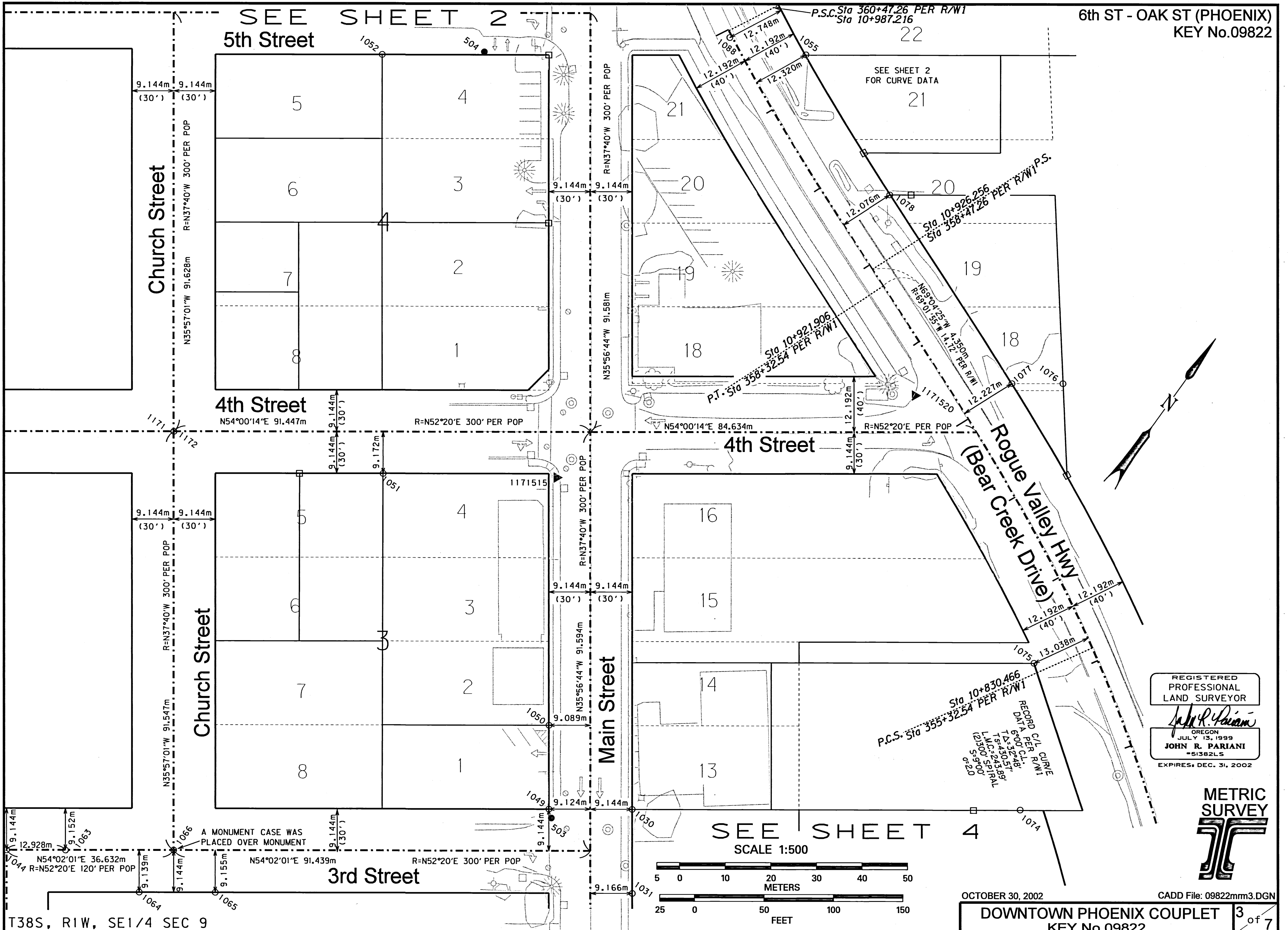
4 of 7



T38S, R1W, SE1/4 SEC 9, SW1/4 SEC 10

SEE SHEET 5

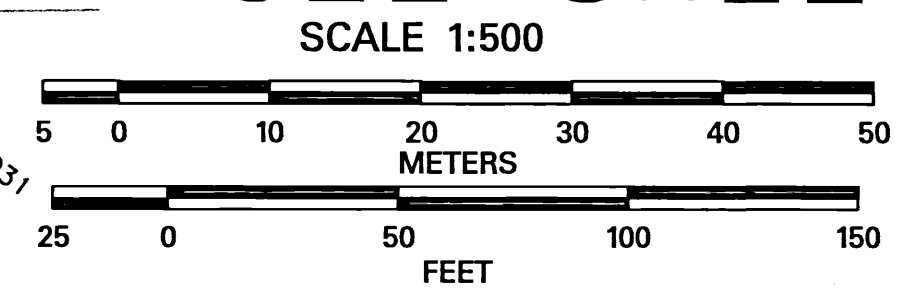
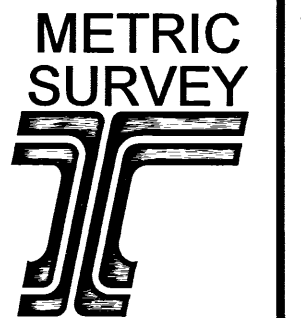
1st Street



REGISTERED  
PROFESSIONAL  
LAND SURVEYOR

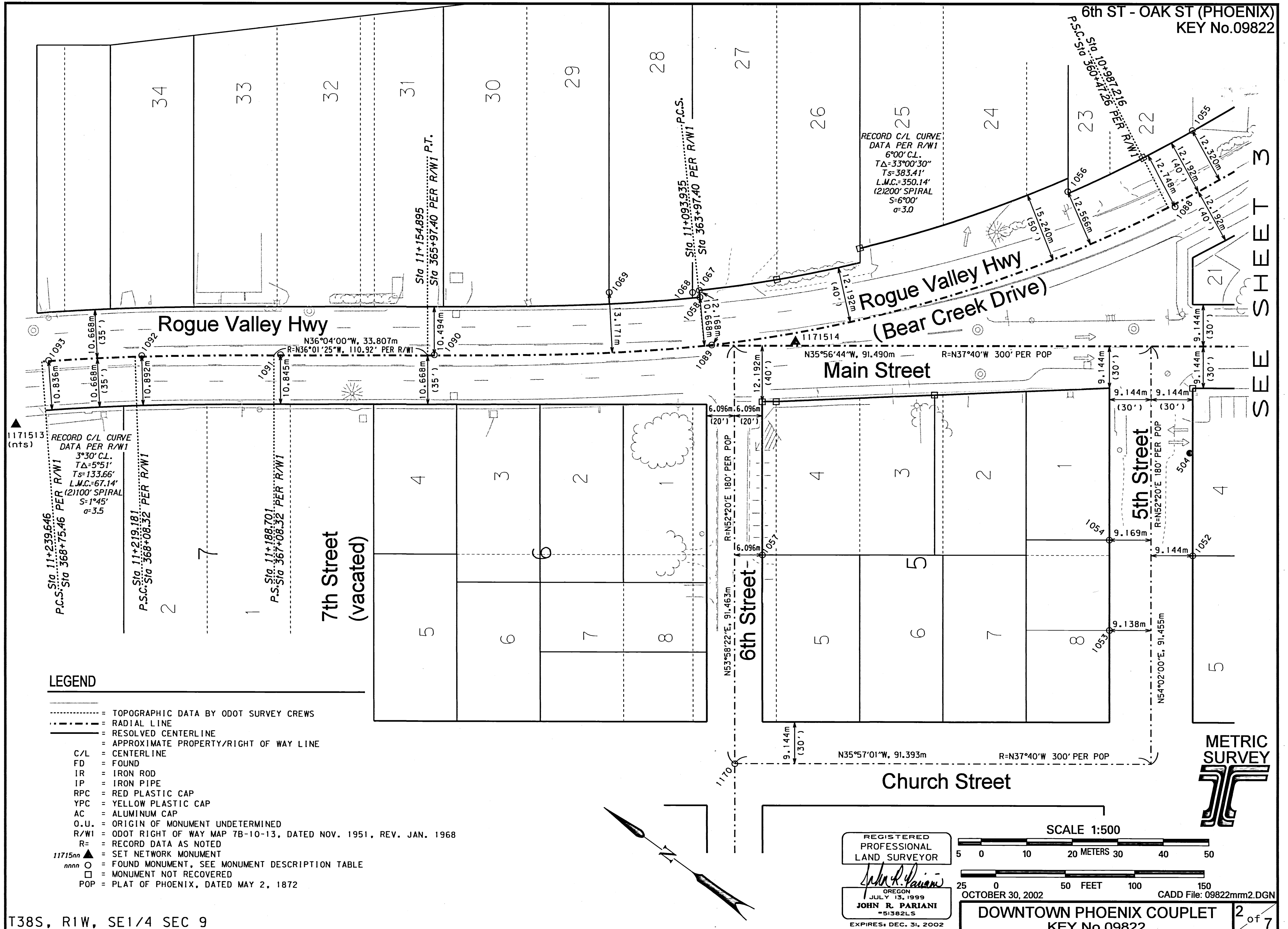
*John R. Pariani*

OREGON  
JULY 13, 1999  
JOHN R. PARIANI  
#51382LS  
EXPIRES: DEC. 31, 2002



OCTOBER 30, 2002 CADD File: 09822mm3.DGN

DOWNTOWN PHOENIX COUPLET 3 of 7  
KEY No.09822



SEE SHEET 3