

MAP OF SURVEY

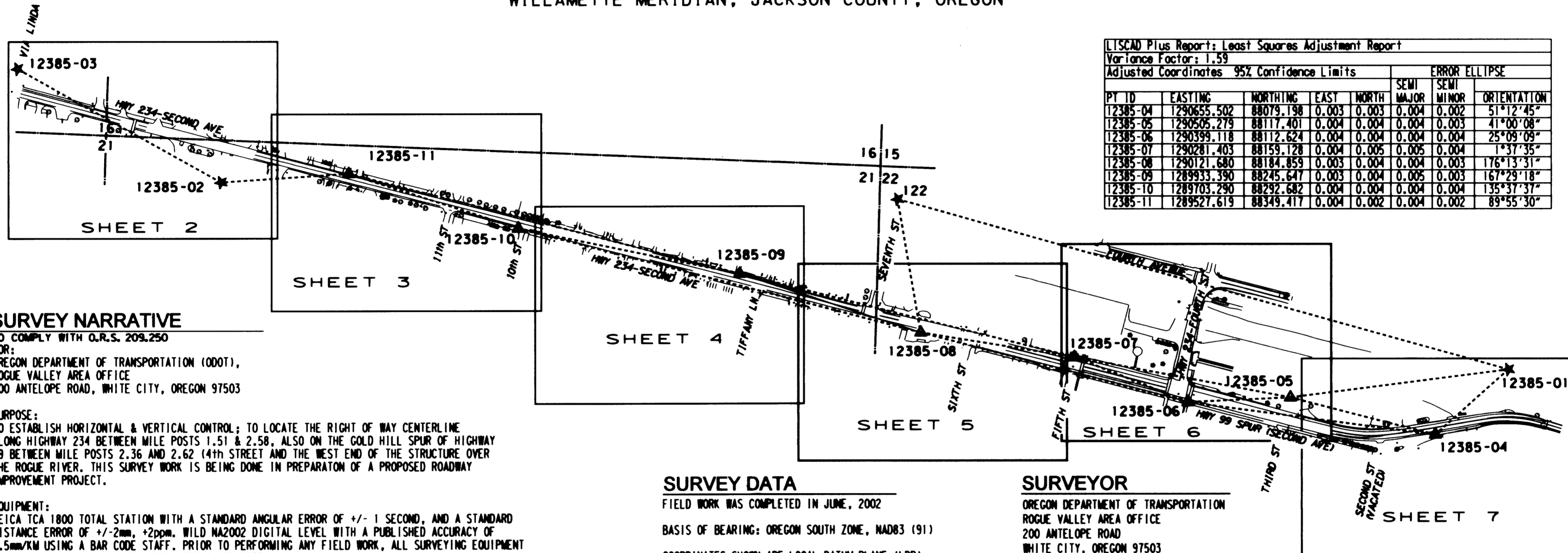
HORIZONTAL CONTROL, RECOVERY,
AND CENTERLINE RETRACEMENT MAP

LOCATED IN THE NORTHWEST 1/4 OF SECTION 22, THE
NORTHEAST 1/4 OF SECTION 21 AND THE SOUTH 1/2 OF
SECTION 16, TOWNSHIP 36 SOUTH, RANGE 3 WEST,
WILLAMETTE MERIDIAN, JACKSON COUNTY, OREGON

•• RECEIVED ••
DATE 9-5-02 BY *OB*
This survey consists of:
7 sheets/Map
0 page(s) Narrative
JACKSON COUNTY
SURVEYOR

LISCAD Plus Report: Least Squares Adjustment Report
Variance Factor: 1.59
Adjusted Coordinates 95% Confidence Limits

PT ID	EASTING	NORTHING	EAST		NORTH		ERROR ELLIPSE	
			MAJOR	MINOR	MAJOR	MINOR	ORIENTATION	
12385-04	1290655.502	88079.198	0.003	0.003	0.004	0.002	51°12'45"	
12385-05	1290505.279	88117.401	0.004	0.004	0.004	0.003	41°00'08"	
12385-06	1290399.118	88112.624	0.004	0.004	0.004	0.004	25°09'09"	
12385-07	1290281.403	88159.128	0.004	0.005	0.005	0.004	1°37'35"	
12385-08	1290121.680	88184.859	0.003	0.004	0.004	0.003	176°13'31"	
12385-09	1289933.390	88245.647	0.003	0.004	0.005	0.003	167°29'18"	
12385-10	1289703.290	88292.682	0.004	0.004	0.004	0.004	135°37'37"	
12385-11	1289527.619	88349.417	0.004	0.002	0.004	0.002	89°55'30"	



SURVEY NARRATIVE

TO COMPLY WITH O.R.S. 209.250
FOR:
OREGON DEPARTMENT OF TRANSPORTATION (ODOT),
ROGUE VALLEY AREA OFFICE
200 ANTELOPE ROAD, WHITE CITY, OREGON 97503

PURPOSE:
TO ESTABLISH HORIZONTAL & VERTICAL CONTROL; TO LOCATE THE RIGHT OF WAY CENTERLINE
ALONG HIGHWAY 234 BETWEEN MILE POSTS 1.51 & 2.58, ALSO ON THE GOLD HILL SPUR OF HIGHWAY
99 BETWEEN MILE POSTS 2.36 AND 2.62 (4th STREET AND THE WEST END OF THE STRUCTURE OVER
THE ROGUE RIVER. THIS SURVEY WORK IS BEING DONE IN PREPARATION OF A PROPOSED ROADWAY
IMPROVEMENT PROJECT.

EQUIPMENT:
LEICA TCA 1800 TOTAL STATION WITH A STANDARD ANGULAR ERROR OF +/- 1 SECOND, AND A STANDARD
DISTANCE ERROR OF +/- 2mm, +2ppm. WILD NA2002 DIGITAL LEVEL WITH A PUBLISHED ACCURACY OF
1.5mm/KM USING A BAR CODE STAFF. PRIOR TO PERFORMING ANY FIELD WORK, ALL SURVEYING EQUIPMENT
WAS CHECKED AND CALIBRATED PER CURRENT STANDARDS.

PROCEDURE:
A NETWORK WAS RUN THROUGH THE ENTIRE PROJECT; BEGINNING ON POINT 12385-01 AND CLOSING ON
POINT 12385-03. COORDINATES FOR 122, 12385-01, 12385-02 AND 12385-03 WERE FIXED IN THE NETWORK
ADJUSTMENT. A LEAST SQUARES ADJUSTMENT WAS USED, WITH THE RESULTS OF THIS ADJUSTMENT,
SHOWN ON THE FACE OF THIS MAP. FOUND MONUMENTS WERE DOUBLE TIED PER ODOT SPECIFICATIONS,
AND ARE SHOWN WITH A PERPENDICULAR OFFSET FROM THE RESOLVED CENTERLINE. PROPERTY LINES
SHOWN ON THIS SURVEY ARE APPROXIMATE ONLY.
THAT PORTION OF HIGHWAY CENTERLINE BETWEEN THE ROGUE RIVER AND THE NORTH-SOUTH SECTION LINE
COMMON TO SECTIONS 21 & 22, TOWNSHIP 36 SOUTH, RANGE 3 WEST, WILLAMETTE MERIDIAN, FIT WELL WITH
FOUND MONUMENTS AS COMPARED TO THE GOLD HILL TOWN PLAT AND ODOT MAP 38-2-9. THE HIGHWAY CENTERLINE
WESTERLY OF SAID SECTION LINE WAS RESOLVED USING FOUND MONUMENTS AS COMPARED TO THE RIVERSIDE
ADDITION TO GOLD HILL. ODOT MAP 38-2-9 WAS NOT USED ALONG THIS PORTION OF HIGHWAY. THE FURTHER
WESTERLY FROM SAID SECTION LINE THE MORE THE FOUND MONUMENTS DID NOT MATCH THE RECORD CENTERLINE.
IT BECAME APPARENT THAT THE CENTERLINES FROM THE RIVERSIDE ADDITION AND THE GOLD HILL TOWN PLAT DO
NOT LINE UP, EVEN THOUGH THAT THEY ARE PARALLEL WITH EACH OTHER. SEE SHEET 5/7.
THE RESOLVED CENTERLINES OF FOURTH AVE, SECOND STREET, THIRD STREET, FOURTH STREET, FIFTH STREET, AND
SIXTH STREET WERE DETERMINED BY COMPARING FOUND MONUMENTS TO FILED SURVEY 1401. MONUMENTS FIT WELL
WITH RECORD AS NOTED ON MAP. THE CENTERLINE OF TENTH STREET WAS RESOLVED BY USING FOUND MONUMENTS
PER FILED SURVEY 4330. THE CENTERLINE OF ELEVENTH STREET WAS RESOLVED BY USING FOUND MONUMENTS PER
FILED SURVEY 6177. TIFFANY LANE CENTERLINE WAS RESOLVED PER FOUND MONUMENTS ON FILED SURVEY 11910.

SURVEY DATA

FIELD WORK WAS COMPLETED IN JUNE, 2002
BASIS OF BEARING: OREGON SOUTH ZONE, NAD83 (91)
COORDINATES SHOWN ARE LOCAL DATUM PLANE (LDP).
THE COMBINED SCALE FACTOR (CSF) OF 0.99992465. IS
DERIVED FROM THE AVERAGE LATITUDE AND ELEVATION
OF THIS PROJECT. TO CONVERT FROM LDP TO OREGON STATE
PLANE (SPC), USE THE FOLLOWING FORMULA: LDP x CSF = SPC.
THE CONVERGENCE AT POINT No. 122 IS -01°44'46.6".

VERTICAL DATUM BASED UPON THE PUBLISHED USCG&S
BENCHMARK "R 7", REFERENCED TO NAVD88 DATUM.
R 7 ELEVATION = 331.181 (NAVD88).

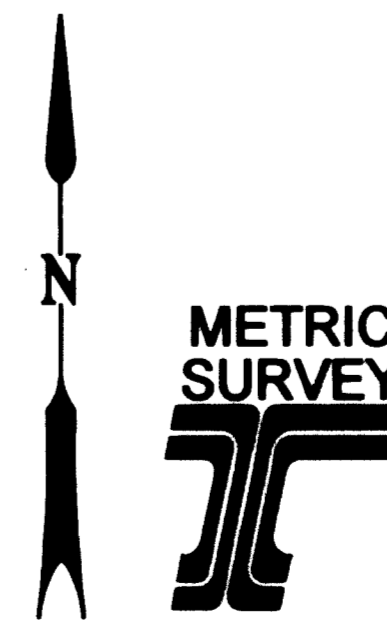
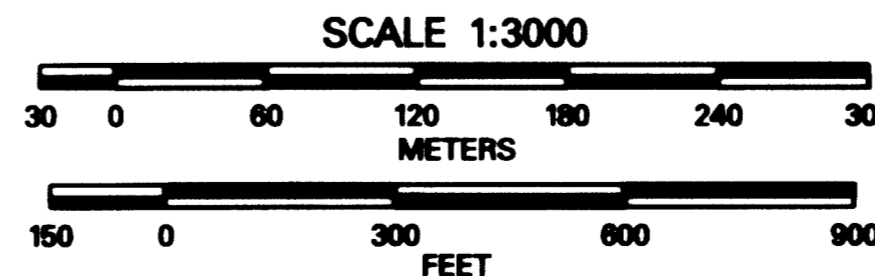
TOPOGRAPHIC DATA SHOWN WAS COLLECTED BY ODOT SURVEY
CREWS IN THE SPRING OF 2002, AND IS INTENDED TO BE USED
FOR REFERENCE ONLY.

SURVEYOR

OREGON DEPARTMENT OF TRANSPORTATION
ROGUE VALLEY AREA OFFICE
200 ANTELOPE ROAD
WHITE CITY, OREGON 97503

LEGEND

- 12385-m Δ = SET NETWORK MONUMENT
- 12385-m * = GPS CONTROL MONUMENT
- = NETWORK LINES OF OBSERVATION



OREGON DEPARTMENT OF TRANSPORTATION
HORIZONTAL CONTROL,
MONUMENT RECOVERY AND
CENTERLINE RETRACEMENT MAP

REGISTERED
PROFESSIONAL
LAND SURVEYOR

John R. Pariani
JULY 13, 1999
JOHN R. PARIANI
#03823

EXPRES: DEC. 3, 2002

HIGHWAY 234 & HIGHWAY 99
DOWNTOWN GOLD HILL,
JACKSON COUNTY, OREGON

ODOT
200 ANTELOPE ROAD
WHITE CITY, OREGON 97503

DATE: SEPTEMBER 5, 2002
CADD File: 12385MFM1.DGN

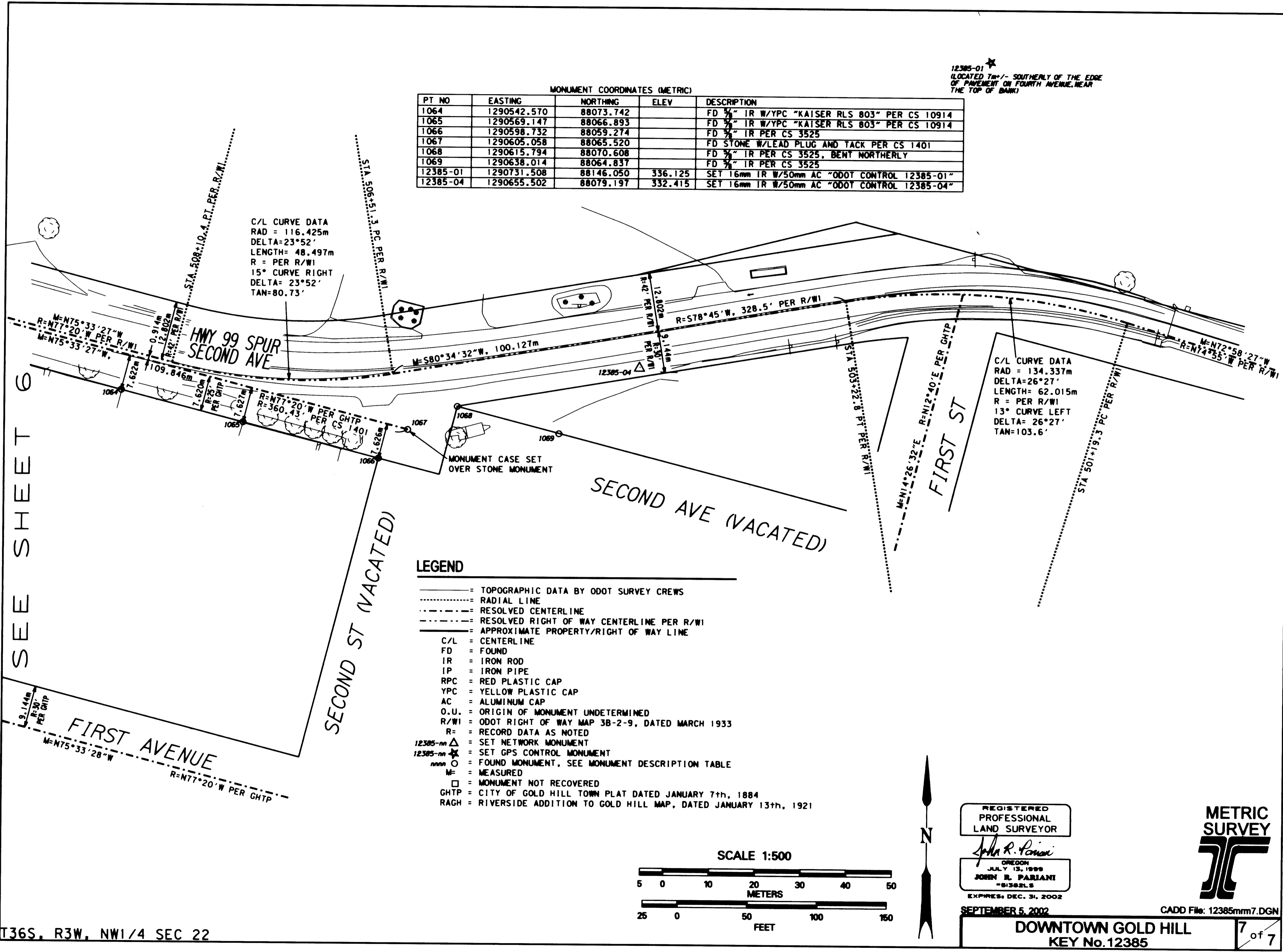
1 of 7

MONUMENT COORDINATES (METRIC)				
PT NO	EASTING	NORTHING	ELEV	DESCRIPTION
1064	1290542.570	88073.742		FD 3/4" IR W/YPC "KAISER RLS 803" PER CS 10914
1065	1290569.147	88066.893		FD 3/4" IR W/YPC "KAISER RLS 803" PER CS 10914
1066	1290598.732	88059.274		FD 3/4" IR PER CS 3525
1067	1290605.058	88065.520		FD STONE W/LEAD PLUG AND TACK PER CS 1401
1068	1290615.794	88070.608		FD 3/4" IR PER CS 3525, BENT NORTHERLY
1069	1290638.014	88064.837		FD 3/4" IR PER CS 3525
12385-01	1290731.508	88146.050	336.125	SET 16mm IR W/50mm AC "ODOT CONTROL 12385-01"
12385-04	1290655.502	88079.197	332.415	SET 16mm IR W/50mm AC "ODOT CONTROL 12385-04"

12385-01
 (LOCATED 7m +/- SOUTHERLY OF THE EDGE
 OF PAVEMENT ON FOURTH AVENUE, NEAR
 THE TOP OF BANK)

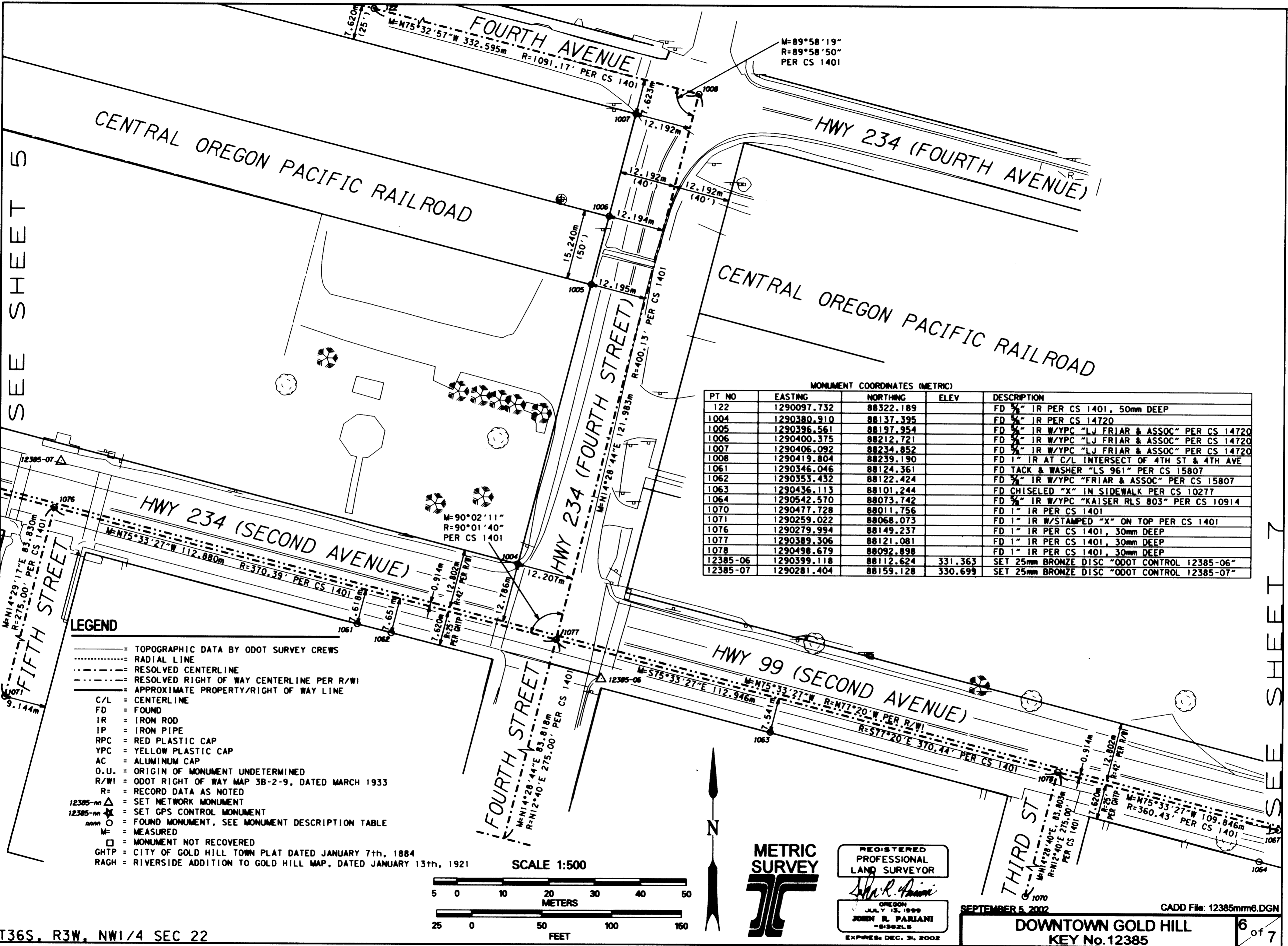
C/L CURVE DATA
 RAD = 116.425m
 DELTA = 23°52'
 LENGTH = 48.497m
 R = PER R/WI
 15° CURVE RIGHT
 DELTA = 23°52'
 TAN = 80.73'

C/L CURVE DATA
 RAD = 134.337m
 DELTA = 26°27'
 LENGTH = 62.015m
 R = PER R/WI
 13° CURVE LEFT
 DELTA = 26°27'
 TAN = 103.6'



SEE SHEET 5

SEE SHEET 7



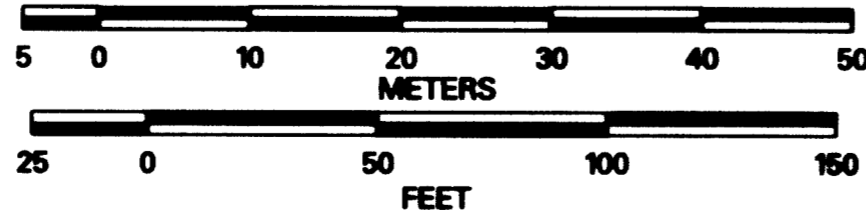
MONUMENT COORDINATES (METRIC)

PT NO	EASTING	NORTHING	ELEV	DESCRIPTION
122	1290097.732	88322.189		FD 3/4" IR PER CS 1401, 50mm DEEP
1004	1290380.910	88137.395		FD 3/4" IR PER CS 14720
1005	1290396.561	88197.954		FD 3/4" IR W/YPC "LJ FRIAR & ASSOC" PER CS 14720
1006	1290400.375	88212.721		FD 3/4" IR W/YPC "LJ FRIAR & ASSOC" PER CS 14720
1007	1290406.092	88234.852		FD 3/4" IR W/YPC "LJ FRIAR & ASSOC" PER CS 14720
1008	1290419.804	88239.190		FD 1" IR AT C/L INTERSECT OF 4TH ST & 4TH AVE
1061	1290346.046	88124.361		FD TACK & WASHER "LS 961" PER CS 15807
1062	1290353.432	88122.424		FD 3/4" IR W/YPC "FRIAR & ASSOC" PER CS 15807
1063	1290436.113	88101.244		FD CHISELED "X" IN SIDEWALK PER CS 10277
1064	1290542.570	88073.742		FD 3/4" IR W/YPC "KAISER RLS 803" PER CS 10914
1070	1290477.728	88011.756		FD 1" IR PER CS 1401
1071	1290259.022	88068.073		FD 1" IR W/STAMPED "X" ON TOP PER CS 1401
1076	1290279.994	88149.237		FD 1" IR PER CS 1401, 30mm DEEP
1077	1290389.306	88121.081		FD 1" IR PER CS 1401, 30mm DEEP
1078	1290498.679	88092.898		FD 1" IR PER CS 1401, 30mm DEEP
12385-06	1290399.118	88112.624	331.363	SET 25mm BRONZE DISC "ODOT CONTROL 12385-06"
12385-07	1290281.404	88159.128	330.699	SET 25mm BRONZE DISC "ODOT CONTROL 12385-07"

LEGEND

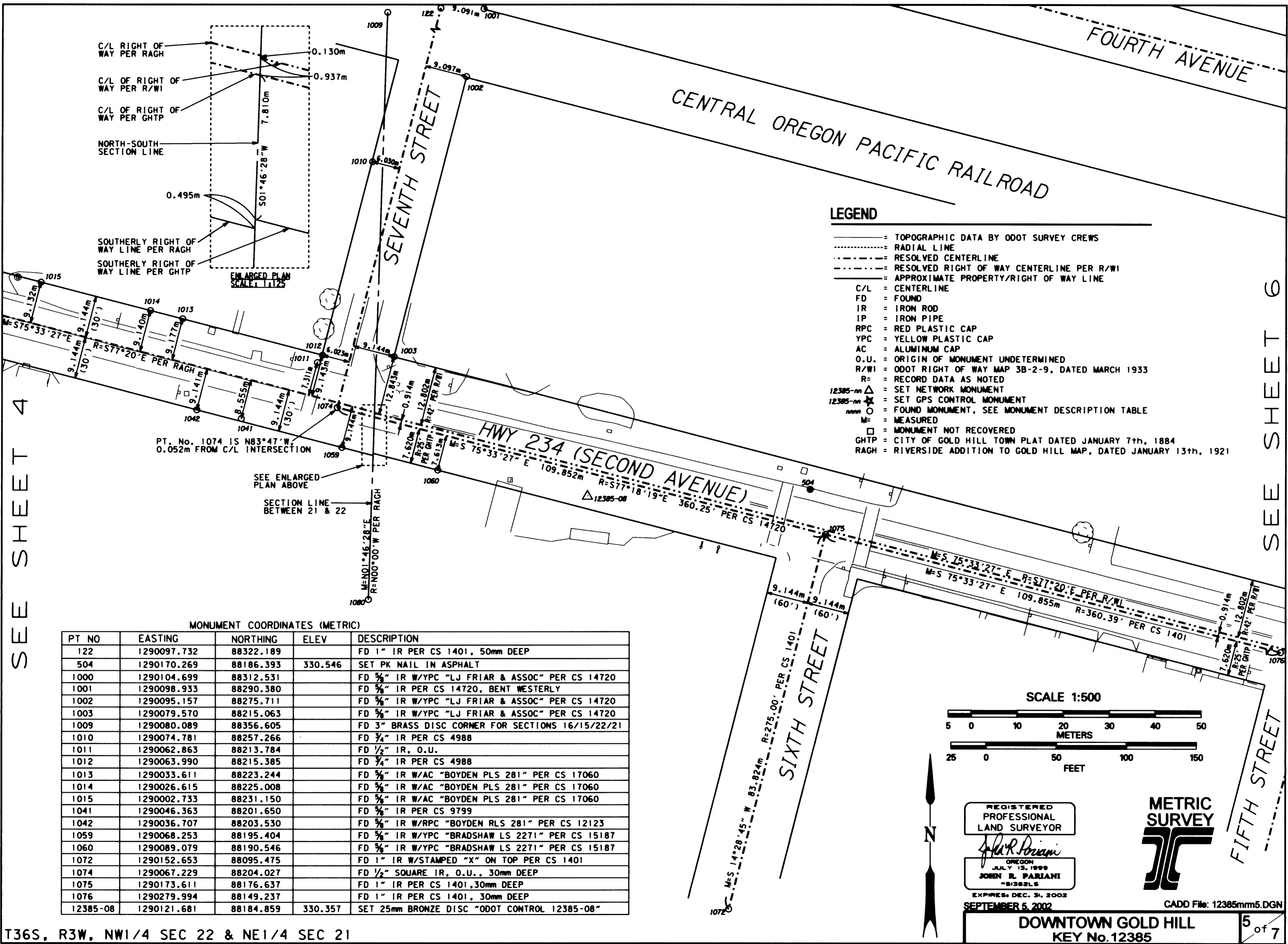
- TOPOGRAPHIC DATA BY ODOT SURVEY CREWS
- RADIAL LINE
- RESOLVED CENTERLINE
- RESOLVED RIGHT OF WAY CENTERLINE PER R/WI
- APPROXIMATE PROPERTY/RIGHT OF WAY LINE
- C/L = CENTERLINE
- FD = FOUND
- IR = IRON ROD
- IP = IRON PIPE
- RPC = RED PLASTIC CAP
- YPC = YELLOW PLASTIC CAP
- AC = ALUMINUM CAP
- O.U. = ORIGIN OF MONUMENT UNDETERMINED
- R/WI = ODOT RIGHT OF WAY MAP 3B-2-9, DATED MARCH 1933
- R = RECORD DATA AS NOTED
- 12385-mm Δ = SET NETWORK MONUMENT
- 12385-mm * = SET GPS CONTROL MONUMENT
- mmmm ○ = FOUND MONUMENT, SEE MONUMENT DESCRIPTION TABLE
- M = MEASURED
- = MONUMENT NOT RECOVERED
- GHTP = CITY OF GOLD HILL TOWN PLAT DATED JANUARY 7th, 1884
- RAGH = RIVERSIDE ADDITION TO GOLD HILL MAP, DATED JANUARY 13th, 1921

SCALE 1:500



REGISTERED PROFESSIONAL LAND SURVEYOR
John R. Pariani
 OREGON
 JULY 13, 1999
 JOHN R. PARIANI
 -S1382LS
 EXPIRES DEC. 31, 2002

SEPTEMBER 5, 2002 CADD File: 12385mm6.DGN
 DOWNTOWN GOLD HILL KEY No.12385 6 of 7



SEE SHEET 4

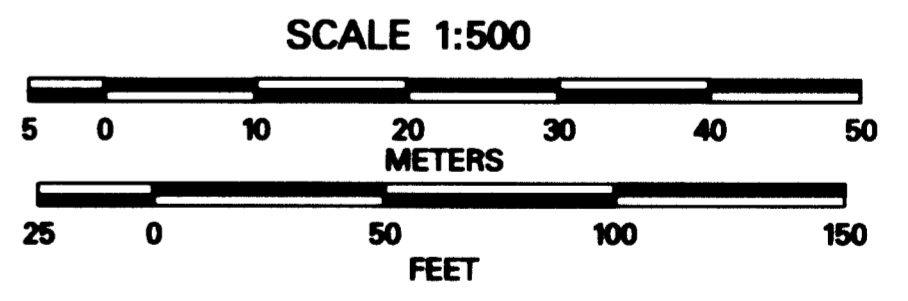
SEE SHEET 6

LEGEND

- TOPOGRAPHIC DATA BY ODOT SURVEY CREWS
- RADIAL LINE
- RESOLVED CENTERLINE
- RESOLVED RIGHT OF WAY CENTERLINE PER R/WI
- APPROXIMATE PROPERTY/RIGHT OF WAY LINE
- C/L = CENTERLINE
- FD = FOUND
- IR = IRON ROD
- IP = IRON PIPE
- RPC = RED PLASTIC CAP
- YPC = YELLOW PLASTIC CAP
- AC = ALUMINUM CAP
- O.U. = ORIGIN OF MONUMENT UNDETERMINED
- R/WI = ODOT RIGHT OF WAY MAP 3B-2-9, DATED MARCH 1933
- R = RECORD DATA AS NOTED
- 12385-mm Δ = SET NETWORK MONUMENT
- 12385-mm * = SET GPS CONTROL MONUMENT
- mmmm ○ = FOUND MONUMENT, SEE MONUMENT DESCRIPTION TABLE
- M = MEASURED
- = MONUMENT NOT RECOVERED
- GHTP = CITY OF GOLD HILL TOWN PLAT DATED JANUARY 7th, 1884
- RAGH = RIVERSIDE ADDITION TO GOLD HILL MAP, DATED JANUARY 13th, 1921

MONUMENT COORDINATES (METRIC)

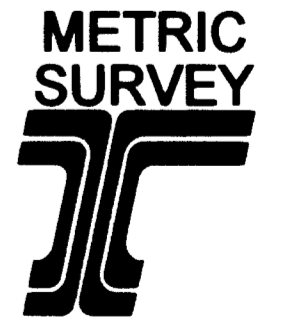
PT NO	EASTING	NORTHING	ELEV	DESCRIPTION
122	1290097.732	88322.189		FD 1" IR PER CS 1401, 50mm DEEP
504	1290170.269	88186.393	330.546	SET PK NAIL IN ASPHALT
1000	1290104.699	88312.531		FD 5/8" IR W/YPC "LJ FRIAR & ASSOC" PER CS 14720
1001	1290098.933	88290.380		FD 5/8" IR PER CS 14720, BENT WESTERLY
1002	1290095.157	88275.711		FD 5/8" IR W/YPC "LJ FRIAR & ASSOC" PER CS 14720
1003	1290079.570	88215.063		FD 5/8" IR W/YPC "LJ FRIAR & ASSOC" PER CS 14720
1009	1290080.089	88356.605		FD 3" BRASS DISC CORNER FOR SECTIONS 16/15/22/21
1010	1290074.781	88257.266		FD 3/4" IR PER CS 4988
1011	1290062.863	88213.784		FD 1/2" IR, O.U.
1012	1290063.990	88215.385		FD 3/4" IR PER CS 4988
1013	1290033.611	88223.244		FD 5/8" IR W/AC "BOYDEN PLS 281" PER CS 17060
1014	1290026.615	88225.008		FD 5/8" IR W/AC "BOYDEN PLS 281" PER CS 17060
1015	1290002.733	88231.150		FD 5/8" IR W/AC "BOYDEN PLS 281" PER CS 17060
1041	1290046.363	88201.650		FD 5/8" IR PER CS 9799
1042	1290036.707	88203.530		FD 5/8" IR W/RPC "BOYDEN RLS 281" PER CS 12123
1059	1290068.253	88195.404		FD 5/8" IR W/YPC "BRADSHAW LS 2271" PER CS 15187
1060	1290089.079	88190.546		FD 5/8" IR W/YPC "BRADSHAW LS 2271" PER CS 15187
1072	1290152.653	88095.475		FD 1" IR W/STAMPED "X" ON TOP PER CS 1401
1074	1290067.229	88204.027		FD 1/2" SQUARE IR, O.U., 30mm DEEP
1075	1290173.611	88176.637		FD 1" IR PER CS 1401, 30mm DEEP
1076	1290279.994	88149.237		FD 1" IR PER CS 1401, 30mm DEEP
12385-08	1290121.681	88184.859	330.357	SET 25mm BRONZE DISC "ODOT CONTROL 12385-08"



REGISTERED PROFESSIONAL LAND SURVEYOR

John R. Pariani
 JOHN R. PARIANI
 -B1382LS

EXPIRES DEC. 31, 2002
 SEPTEMBER 5, 2002

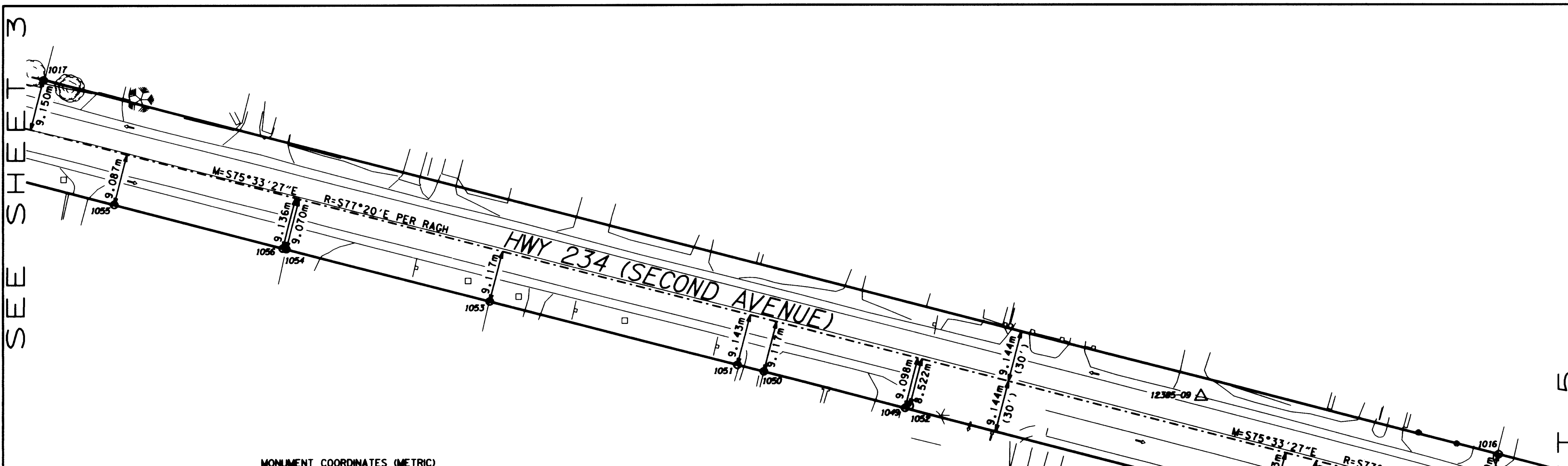


CADD File: 12385mm5.DGN
 DOWNTOWN GOLD HILL
 KEY No. 12385

5 of 7

SEE SHEET 3

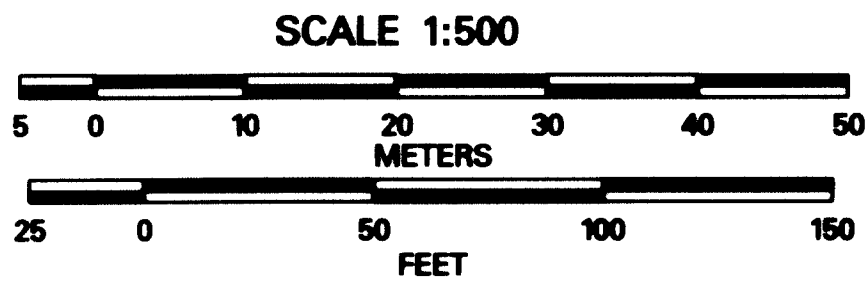
SEE SHEET 5



MONUMENT COORDINATES (METRIC)				
PT NO	EASTING	NORTHING	ELEV	DESCRIPTION
500	1289958.099	88227.707	329.791	SET PK NAIL IN ASPHALT
505	1289954.387	88225.245	329.633	SET PK NAIL IN ASPHALT
1016	1289986.125	88235.446		FD 3/4" IR PER CS 4988
1017	1289727.985	88301.929		FD 3/4" IR PER CS 4988
1043	1289989.775	88215.635		FD 3/4" IR W/YPC "MARQUESS & ASSOC" PER CS 11910
1044	1289954.574	88223.114		FD 3/4" IR W/YPC "MARQUESS & ASSOC" PER CS 11910
1045	1289948.873	88200.975		FD 3/4" IR W/YPC "MARQUESS & ASSOC" PER CS 11910
1046	1289927.437	88117.774		FD 3/4" IR W/YPC PER CS 11910, CAP NOT LEDGIBLE
1047	1289920.252	88126.509		FD 3/4" IR W/YPC PER CS 11910, CAP NOT LEDGIBLE
1048	1289946.126	88226.878		FD 3/4" IR W/YPC "MARQUESS & ASSOC" PER CS 11910
1049	1289880.899	88243.703		FD 3/4" IR W/YPC "FRIAR PLS 961" PER CS 9612
1050	1289855.806	88250.146		FD 3/4" IR W/YPC "TEMPLIN LS 2359" PER CS 11722
1051	1289851.083	88251.336		FD 3/4" IR PER CS 11722
1052	1289881.748	88244.079		FD 3/4" IR, O.U., BENT BAD NORTHERLY
1053	1289807.126	88262.684		FD 3/4" IR W/YPC "L SMITH PLS 2011" PER CS 15969
1054	1289771.108	88272.008		FD 3/4" IR W/YPC "L SMITH PLS 2011" PER CS 15969
1055	1289740.579	88279.853		FD 3/4" IR PER CS 4330, BENT NORTHERLY
1056	1289770.475	88272.103		FD 1" O.D. IP O.U., 50mm DEEP
1057	1289708.670	88266.010		FD 3/4" IR PER CS 4330
12385-09	1289933.390	88245.648	329.642	SET 50mm BRONZE DISC "ODOT CONTROL 12385-09"

LEGEND

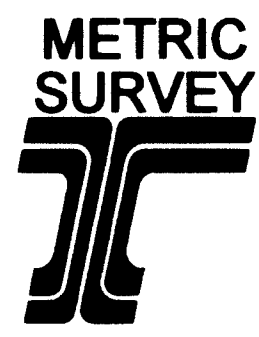
- = TOPOGRAPHIC DATA BY ODOT SURVEY CREWS
- = RADIAL LINE
- = RESOLVED CENTERLINE
- = RESOLVED RIGHT OF WAY CENTERLINE PER R/WI
- = APPROXIMATE PROPERTY/RIGHT OF WAY LINE
- C/L = CENTERLINE
- FD = FOUND
- IR = IRON ROD
- IP = IRON PIPE
- RPC = RED PLASTIC CAP
- YPC = YELLOW PLASTIC CAP
- AC = ALUMINUM CAP
- O.U. = ORIGIN OF MONUMENT UNDETERMINED
- R/WI = ODOT RIGHT OF WAY MAP 3B-2-9, NOT DATED
- R = RECORD DATA AS NOTED
- 12385-m Δ = SET NETWORK MONUMENT
- 12385-mm \star = SET GPS CONTROL MONUMENT
- mm \circ = FOUND MONUMENT, SEE MONUMENT DESCRIPTION TABLE
- M = MEASURED
- \square = MONUMENT NOT RECOVERED
- GHTP = CITY OF GOLD HILL TOWN PLAT DATED JANUARY 7th, 1884
- RAGH = RIVERSIDE ADDITION TO GOLD HILL MAP, DATED JANUARY 13th, 1921



REGISTERED
PROFESSIONAL
LAND SURVEYOR

John R. Pariani

OREGON
JULY 13, 1999
JOHN R. PARIANI
"8362LS
EXPIRES: DEC. 31, 2002

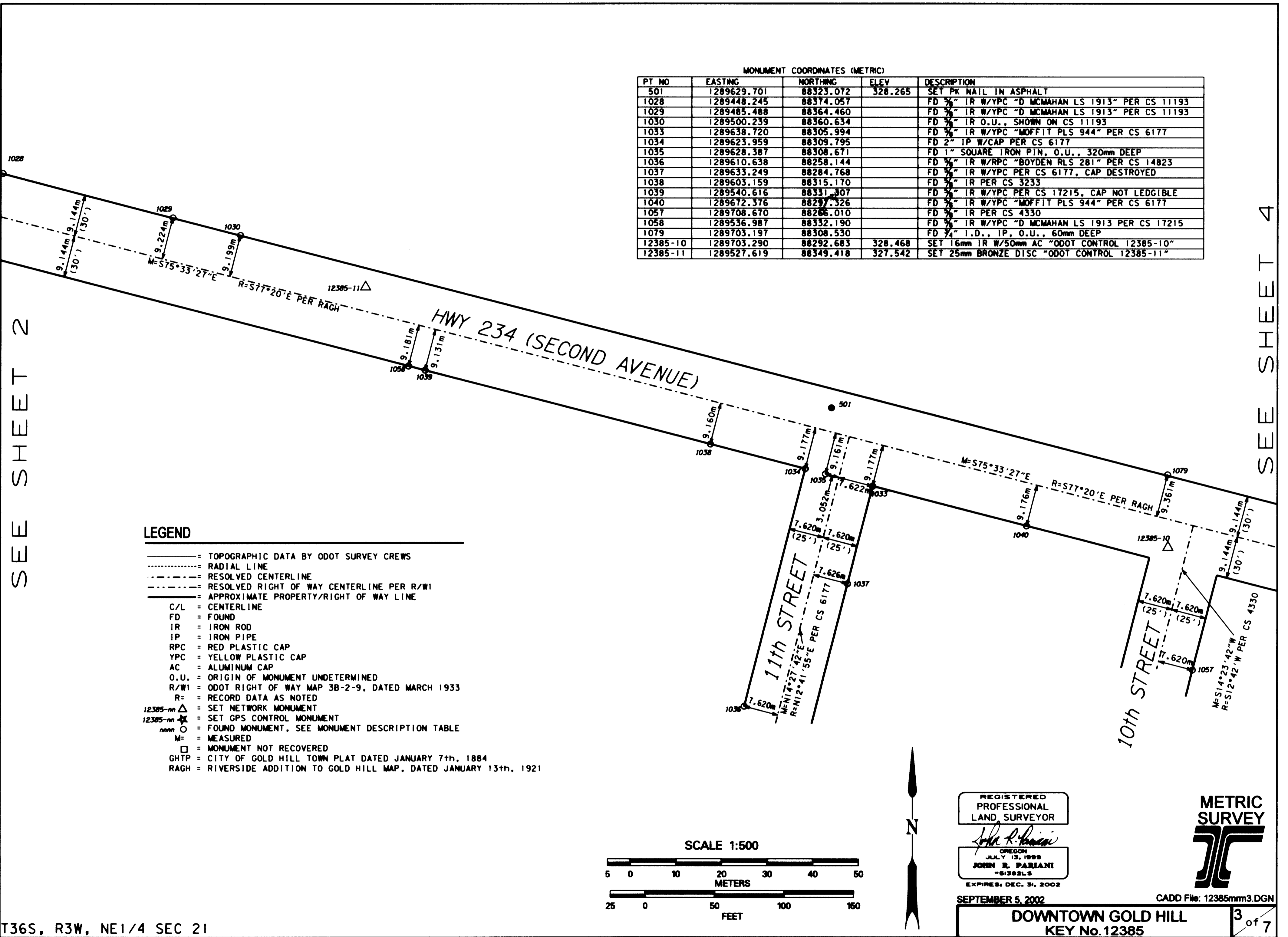


SEPTEMBER 5, 2002 CADD File: 12385mm4.DGN

DOWNTOWN GOLD HILL KEY No. 12385 4 of 7

SEE SHEET 2

SEE SHEET 4

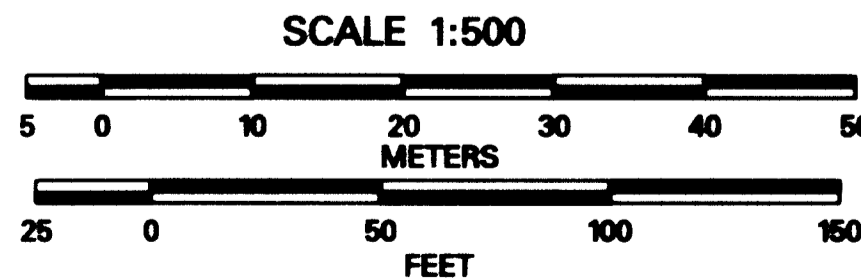


MONUMENT COORDINATES (METRIC)

PT NO	EASTING	NORTHING	ELEV	DESCRIPTION
501	1289629.701	88323.072	328.265	SET PK NAIL IN ASPHALT
1028	1289448.245	88374.057		FD 5/8" IR W/YPC "D MCMAHAN LS 1913" PER CS 11193
1029	1289485.488	88364.460		FD 5/8" IR W/YPC "D MCMAHAN LS 1913" PER CS 11193
1030	1289500.239	88360.634		FD 5/8" IR O.U., SHOWN ON CS 11193
1033	1289638.720	88305.994		FD 5/8" IR W/YPC "MOFFIT PLS 944" PER CS 6177
1034	1289623.959	88309.795		FD 2" IP W/CAP PER CS 6177
1035	1289628.387	88308.671		FD 1" SQUARE IRON PIN, O.U., 320mm DEEP
1036	1289610.638	88258.144		FD 5/8" IR W/RPC "BOYDEN RLS 281" PER CS 14823
1037	1289633.249	88284.768		FD 5/8" IR W/YPC PER CS 6177, CAP DESTROYED
1038	1289603.159	88315.170		FD 5/8" IR PER CS 3233
1039	1289540.616	88331.907		FD 5/8" IR W/YPC PER CS 17215, CAP NOT LEDGIBLE
1040	1289672.376	88297.326		FD 5/8" IR W/YPC "MOFFIT PLS 944" PER CS 6177
1057	1289708.670	88285.010		FD 5/8" IR PER CS 4330
1058	1289536.987	88332.190		FD 5/8" IR W/YPC "D MCMAHAN LS 1913" PER CS 17215
1079	1289703.197	88308.530		FD 3/4" I.D., IP, O.U., 60mm DEEP
12385-10	1289703.290	88292.683	328.468	SET 16mm IR W/50mm AC "ODOT CONTROL 12385-10"
12385-11	1289527.619	88349.418	327.542	SET 25mm BRONZE DISC "ODOT CONTROL 12385-11"

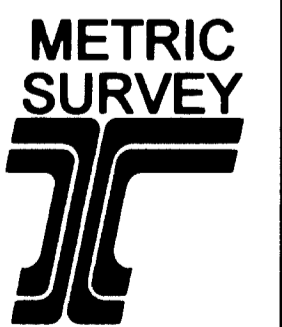
LEGEND

- TOPOGRAPHIC DATA BY ODOT SURVEY CREWS
- RADIAL LINE
- RESOLVED CENTERLINE
- RESOLVED RIGHT OF WAY CENTERLINE PER R/WI
- APPROXIMATE PROPERTY/RIGHT OF WAY LINE
- C/L = CENTERLINE
- FD = FOUND
- IR = IRON ROD
- IP = IRON PIPE
- RPC = RED PLASTIC CAP
- YPC = YELLOW PLASTIC CAP
- AC = ALUMINUM CAP
- O.U. = ORIGIN OF MONUMENT UNDETERMINED
- R/WI = ODOT RIGHT OF WAY MAP 3B-2-9, DATED MARCH 1933
- R = RECORD DATA AS NOTED
- 12385-mm Δ = SET NETWORK MONUMENT
- 12385-mm * = SET GPS CONTROL MONUMENT
- mmn ○ = FOUND MONUMENT, SEE MONUMENT DESCRIPTION TABLE
- M = MEASURED
- = MONUMENT NOT RECOVERED
- GHTP = CITY OF GOLD HILL TOWN PLAT DATED JANUARY 7th, 1884
- RAGH = RIVERSIDE ADDITION TO GOLD HILL MAP, DATED JANUARY 13th, 1921



REGISTERED PROFESSIONAL LAND SURVEYOR

John R. Pariani
 OREGON
 JULY 13, 1999
 JOHN R. PARIANI
 #1382LS
 EXPIRES: DEC. 31, 2002



SEPTEMBER 5, 2002

CADD File: 12385mm3.DGN

DOWNTOWN GOLD HILL
 KEY No. 12385

3 of 7

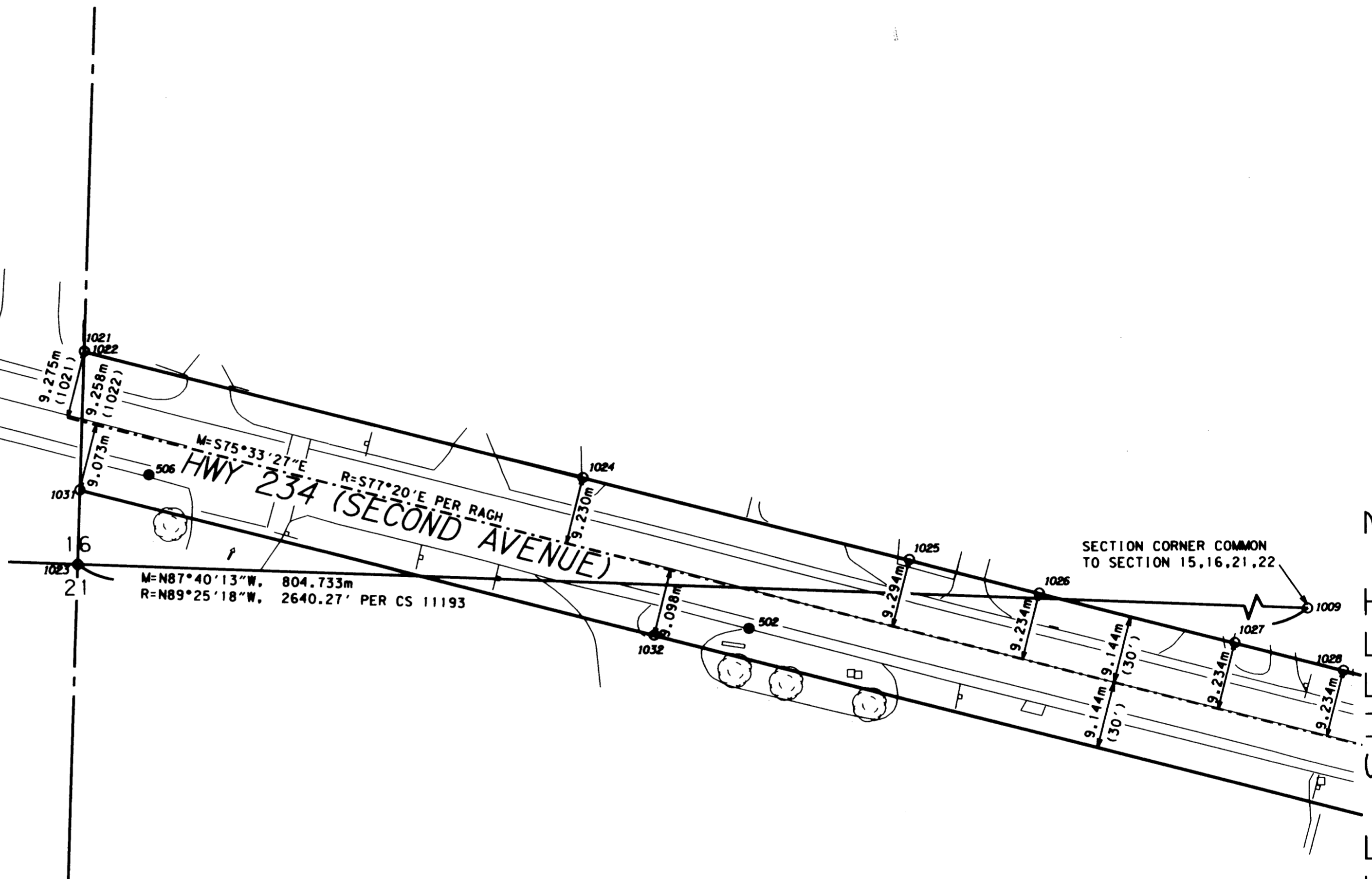
VIA LINDA
1073

LEGEND

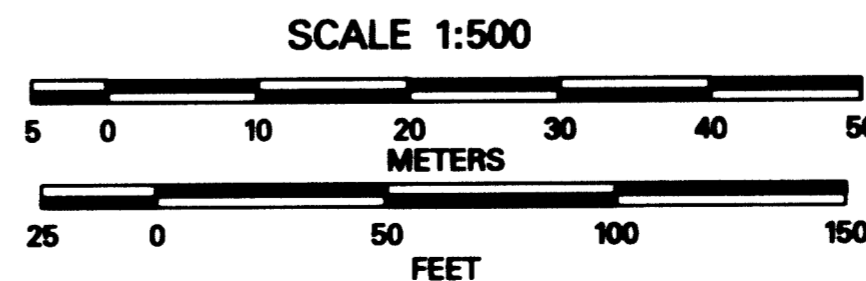
- = TOPOGRAPHIC DATA BY ODOT SURVEY CREWS
- = RADIAL LINE
- = RESOLVED CENTERLINE
- = RESOLVED RIGHT OF WAY CENTERLINE PER R/WI
- = APPROXIMATE PROPERTY/RIGHT OF WAY LINE
- C/L = CENTERLINE
- FD = FOUND
- IR = IRON ROD
- IP = IRON PIPE
- RPC = RED PLASTIC CAP
- YPC = YELLOW PLASTIC CAP
- AC = ALUMINUM CAP
- O.U. = ORIGIN OF MONUMENT UNDETERMINED
- R/WI = ODOT RIGHT OF WAY MAP 3B-2-9, DATED MARCH 1933
- R = RECORD DATA AS NOTED
- △ = SET NETWORK MONUMENT
- ☆ = SET GPS CONTROL MONUMENT
- = FOUND MONUMENT, SEE MONUMENT DESCRIPTION TABLE
- M = MEASURED
- = MONUMENT NOT RECOVERED
- GHTP = CITY OF GOLD HILL TOWN PLAT DATED JANUARY 7th, 1884
- RAGH = RIVERSIDE ADDITION TO GOLD HILL MAP, DATED JANUARY 13th, 1921

MONUMENT COORDINATES (METRIC)

PT NO	EASTING	NORTHING	ELEV	DESCRIPTION
502	1289367.469	88380.133	326.698	SET PK NAIL IN ASPHALT
506	1289285.738	88401.414	326.914	SET PK NAIL IN ASPHALT
1009	1290080.089	88356.605		FD 3" BRASS DISC CORNER FOR SECTIONS 16/15/22/21
1018	1289189.814	88441.166		FD 5/8" IR W/YPC "D MCMAHAN LS 1913" PER CS 13908
1019	1289225.753	88432.643		FD 5/8" IR W/YPC "D MCMAHAN LS 1913" PER CS 13908
1020	1289261.909	88422.719		FD 5/8" IR W/YPC "WEAVER LS 1679" PER CS 10530
1021	1289277.042	88418.196		FD 5/8" IR W/YPC "D MCMAHAN LS 1913" PER CS 11193
1022	1289277.021	88418.184		FD 5/8" IR W/YPC "D MCMAHAN LS 1913" O.U.
1023	1289276.021	88389.316		FD BRASS DISC QUARTER CORNER FOR SECTIONS 16/21
1024	1289344.928	88400.666		FD 5/8" IR W/YPC "D MCMAHAN LS 1913" PER CS 11193
1025	1289389.314	88389.301		FD 5/8" IR W/YPC "D MCMAHAN LS 1913" PER CS 11193
1026	1289406.905	88384.708		FD 5/8" IR W/YPC PER CS 11622, CAP NOT LEDGIBLE
1027	1289433.493	88377.870		FD 5/8" IR PER CS 11193
1028	1289448.245	88374.057		FD 5/8" IR W/YPC "D MCMAHAN LS 1913" PER CS 11193
1031	1289276.343	88399.429		FD 5/8" IR PER CS 900
1032	1289354.542	88379.264		FD 5/8" IR W/2" AC "LS 1913" PER CS 13908
1036	1289610.638	88258.144		FD 5/8" IR W/RPC "BOYDEN RLS 281" PER CS 14823
1057	1289708.670	88266.010		FD 5/8" IR PER CS 4330
1073	1289177.774	88434.891		FD 5/8" IR W/2" AC "LS 1913" PER CS 13908
12385-02	1289395.371	88340.718	327.875	SET 16mm IR W/50mm AC "ODOT CONTROL 12385-02"
12385-03	1289183.914	88458.177	327.460	FD BRASS DISC IN CONCRETE "LS 1913" PER CS 13908



12385-02 △
(LOCATED IN THE MOST NORTHERLY CURB BY
THE INSIDE LANE OF THE SCHOOL TRACK)



REGISTERED
PROFESSIONAL
LAND SURVEYOR
John R. Pariani
OREGON
JULY 13, 1999
JOHN R. PARIANI
"S1582LS"
EXPIRES: DEC. 31, 2002



SEPTEMBER 5, 2002 CADD File: 12385mm2.DGN

DOWNTOWN GOLD HILL
KEY No. 12385

SEE SHEET 3

T36S, R3W, SOUTH 1/2 SEC 16 & NE1/4 SEC 21