

SURVEY NARRATIVE TO COMPLY WITH O.R.S. 209.250

LOCATION: The Northwest quarter of Section 16, Township 34 South, Range 2 West, Willamette Meridian, Jackson County, Oregon.

SURVEY FOR: Indian Hill LLC
30365 Redwood Highway
P.O. Box 519
Cave Junction, Oregon 97523

SURVEY BY: Rambo Surveying
Arthur R. Rambo
735 Vista Park Drive
Eagle Point, Oregon 97524

DATE: August 30, 2002

BASIS OF BEARING: Survey Number 7321

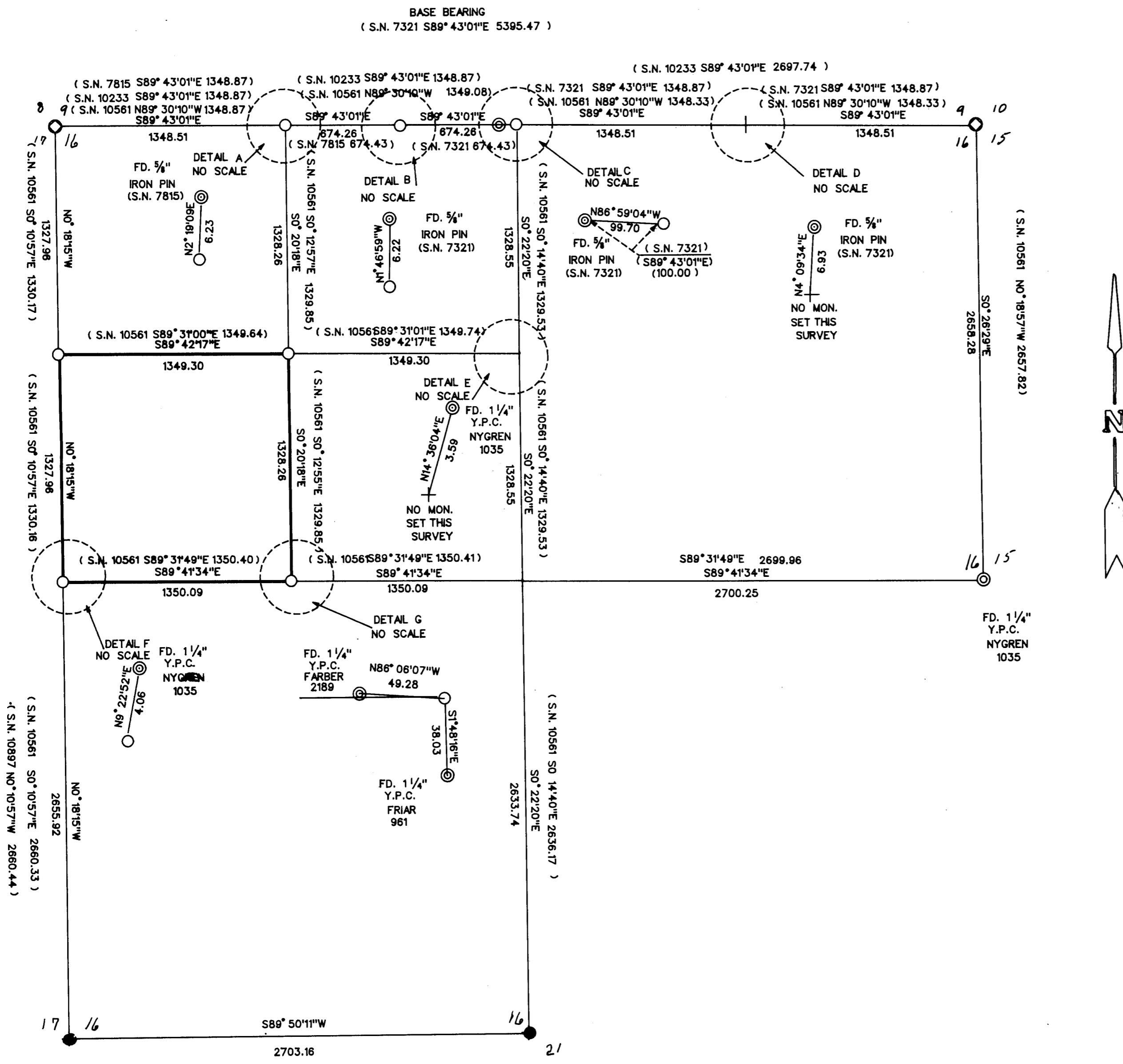
PURPOSE: To survey, mark, and post certain property lines of Indian Hill LLC land as shown on the map to accompany this narrative.

PROCEDURE: A search of records revealed that the original corners needed for control of this survey had been re-established from original evidence or by proportionate measurement. A Wild TC 1000 Theodolite was utilized to run a closed traverse survey to the found corners needed for control of this survey. While performing this survey it was discovered that the West one-quarter corner was not set at the proper proportionate position. Also that the one-quarter corner, West one-sixteenth corner, East one-sixteenth corner, and the East-West one-sixty fourth corner common to Section 9 and Section 16 were not set at proper proportionate positions. During the course of this survey several closed loop traverses were run to check the positions of the corners which did not fit proper positions. The proper positions were calculated and the subdivision of the Northwest quarter of Section 16 was calculated. Then, monuments needed for this survey were set. Lines were posted with 2 inch square plastic tags, 3 inch by 5 inch yellow tags (with distances to corner marked on them), and red painted blazes as shown on the plat to accompany this narrative.

MAP OF SURVEY

LOCATED IN THE NORTHWEST
QUARTER OF SECTION 16,
TOWNSHIP 34 SOUTH, RANGE 2
WEST, WILLAMETTE MERIDIAN

RECEIVED
Date 9-06-02 By AB
This survey consists of:
1 sheet(s) Map
5 page(s) Narrative
JACKSON COUNTY
SURVEY



SURVEY FOR

INDIAN HILL LIMITED PARTNERSHIP
30365 REDWOOD HIGHWAY
P.O. BOX 519
CAVE JUNCTION, OR. 97523

LEGEND

- FOUND 3" BLM BRASS CAP
- FOUND JACKSON COUNTY MONUMENT
- ⊙ FOUND MONUMENT AS NOTED
- SET 5/8" BY 30" IRON PIN WITH 2" ALUM. CAP MARKED PLS 1086

— LINE MARKED THIS SURVEY
() RECORD DATA

BASIS OF BEARING
SURVEY No. 7321

SCALE DATE
1" = 500' AUGUST 30, 2002

SURVEY BY

ARTHUR R. RAMBO
735 VISTA PARK DRIVE
EAGLE POINT, OREGON 97524

REGISTERED
PROFESSIONAL
LAND SURVEYOR

Arthur R. Rambo
OREGON
JULY 30, 1976
ARTHUR R. RAMBO
NO 1086

RENEWAL DATE DECEMBER 31, 2002

FROM WHICH:

A 7 inch diameter Douglas Fir bears N70°08'E, 19.9 feet marked N1/16S16 in upper face, BT in lower face.

An 6.5 inch diameter Black Oak bears N5°57'W, 41.2 feet marked N1/16S17 in upper face, BT in lower face.

Centerwest one-sixteenth corner Section 16, Township 34 South, Range 2 West. At the corner location I set a 5/8 by 30 inch iron pin, with a 2 inch diameter Aluminum cap marked:

T34S R2W
1
CW ---S16
16
PLS 1086

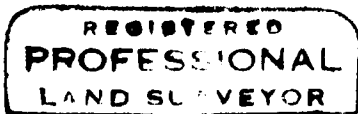
FROM WHICH:

A 13 inch diameter Ash bears N16°19'E, 14.6 feet marked CW1/16S16 in upper face, BT in lower face.

An 11.5 inch diameter White Oak bears S69°28'W, 65.8 feet marked CW1/16S16 in upper face, BT in the lower face.

A 1 1/4 inch diameter Yellow Plastic Cap bears S1°48'16"E, 38.03 feet marked FRIAR LS 961.

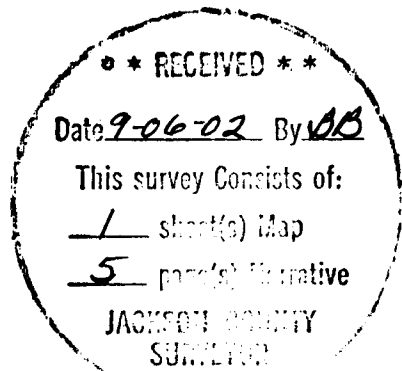
A 1 1/4 inch diameter Yellow Plastic Cap bears N86°06'07"W, 49.28 feet marked FARBER LS2189.



Arthur R. Rambo



Renewal date December 31, 2002



FROM WHICH:

Tree referenced on survey number 10561. A 6 inch diameter Pine bears N17°21'E, 11.1 feet marked with double healed blaze.

Tree referenced on survey number 10561. A 4.5 inch diameter Black Oak bears S29°49'W, 27.4 feet with double healed blaze.

A 6.5 inch diameter Madrona bears S17°07"E, 48.5 feet marked ¼ S16 in upper face, BT in lower face.

A 6.5 inch diameter Madrona bears N83°59"W, 18.0 feet marked ¼ S17 in upper face, BT in lower face.

A 1 ¼ inch yellow Plastic Cap bears N9°22'52"E, 4.06 feet marked Nygren 1035.

Northwest one-sixteenth corner Section 16, Township 34 South, Range 2 West. At the corner location I set a 5/8 by 30 inch iron pin, with a 2 inch diameter Aluminum cap marked:

T34S R2W
1
NW -- --16
16
PLS 1086

FROM WHICH:

A 7 inch diameter Madrona bears S55°53'E, 46.6 feet marked NW1/16S16 in upper face, BT in lower face.

An 8 inch diameter Douglas Fir bears N69°12'E, 15.7 feet marked NW1/16S16 in upper face, BT in lower face.

North one-sixteenth corner common to Section 16, and Section 17, Township 34 South, Range 2 West. At the corner location I set a 5/8 by 30 inch iron pin, with a 2 inch diameter Aluminum cap marked:

T34S R2W
N
1
S17 -- --S16
16
PLS 1086

FROM WHICH:

Tree referenced on survey number 7321. A 27 inch diameter Ash bears N35°02'E, 15.0 feet with healed blaze.

Tree referenced on survey number 7321. A 20.5 inch diameter Cedar bears S80°02'E, 31.8 feet with healed blaze.

A 5/8 inch iron pin bears N1°46'59"W, 6.22 feet.

One-quarter corner common to Section 9 and Section 16, Township 34 South, Range 2 West. At the corner location I set a 5/8 by 30 inch iron pin, with a 2 inch diameter Aluminum cap marked:

T34S R2W
S9
1
-- --
4
S16
PLS 1086

FROM WHICH:

A 6 inch diameter Maple bears N26°33'E, 42.8 feet marked ¼ S16 in upper face, BT in lower face.

A 9.5 inch diameter Maple bears S8°49'E, 6.8 feet marked ¼ S16 in upper face, BT in lower face.

An 8 inch diameter Douglas Fir bears S62°09'W, 30.0 feet marked ¼ S16 in upper face, BT in lower face.

A 9 inch diameter Douglas Fir bears N63°42"W, 44.9 feet marked ¼ S9 in upper face, BT in lower face.

A 5/8 inch iron pin bears N86°59'04"W, 99.70 feet .

One-quarter corner common to Section 16 and Section 17, Township 34 South, Range 2 West. At the corner location I set a 5/8 by 30 inch iron pin with a 2 inch diameter Aluminum cap marked:

T34S R2W
1
S17 -- -- S16
4
PLS 1086

CORNERS SET THIS SURVEY:

All measurements to bearing trees are to the center of tree at base.
 All new bearing trees marked this survey have a Brass washer
 marked PLS 1086 nailed to lower face.

West one-sixteenth corner common to Section 9 and Section 16. At the corner location I
 set a 5/8 by 30 inch iron pin, with a 2" diameter Aluminum cap marked:

T34S R2W
 S9
 1
 W ---
 16
 S16
 PLS 1086

FROM WHICH:

Tree referenced on survey number 7815. A 20 inch diameter
 Douglas Fir bears N49°00'E, 11.9 feet, with healed blaze.

Tree referenced on survey number 7815. A 17 inch diameter
 Douglas Fir bears N31°11'W, 16.7 feet with healed blaze

A 5/8 inch iron pin bears N2°19'09"E 6.23 feet

East – West one-sixty fourth corner common Section 9 and Section 16. At the corner
 location I set a 5/8 by 30 inch iron pin, with a 2" diameter Aluminum cap marked:

T34S R2W
 S9
 1
 E-W ---
 64
 S16

PLS 1086