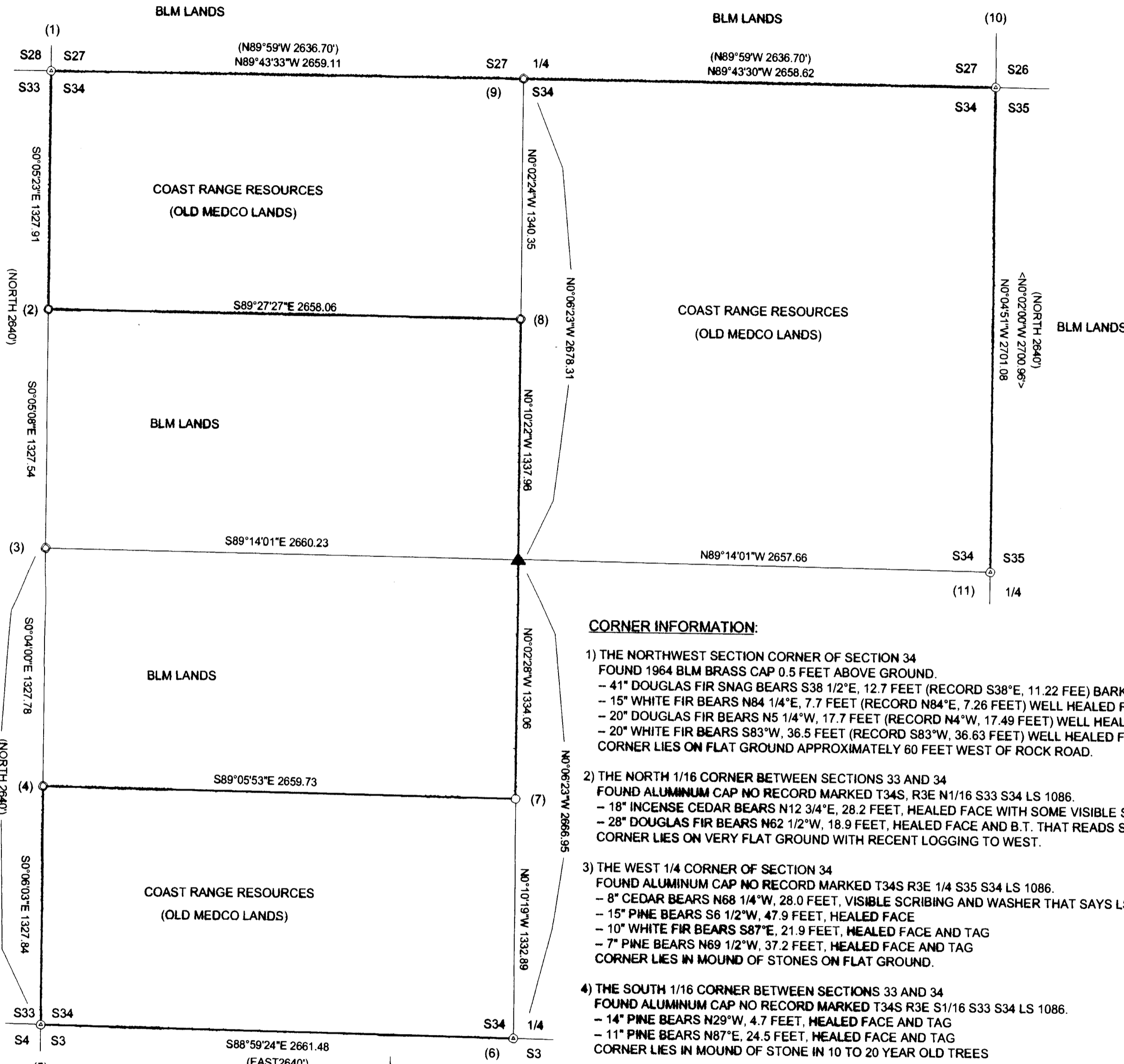


# LONE ROCK TIMBER CO.

SURVEY BY: LONE ROCK TIMBER CO.  
 PO BOX 1127 ROSEBURG, OREGON 97470 LONE ROCK SURVEY: M34-3E-34 TRACT  
 SECTION 34, TOWNSHIP 34 SOUTH, RANGE 3 EAST, W.M. JACKSON COUNTY, ORE.  
 SCALE: 1" = 500'  
 JULY, 2002

RECEIVED  
 Date 7-22-02 By [Signature]  
 This survey consists of:  
 1 sheet(s) Map  
 0 page(s) Narrative  
 JACKSON COUNTY  
 Surveyors



**CORNER INFORMATION:**

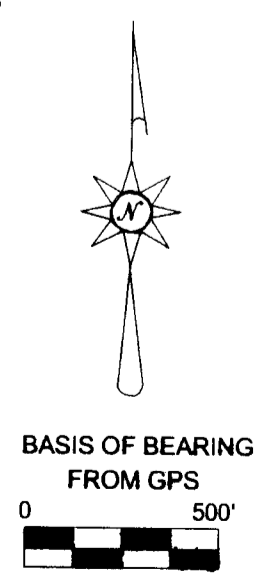
- 1) THE NORTHWEST SECTION CORNER OF SECTION 34  
 FOUND 1964 BLM BRASS CAP 0.5 FEET ABOVE GROUND.  
 - 41° DOUGLAS FIR SNAG BEARS S38 1/2°E, 12.7 FEET (RECORD S38°E, 11.22 FEET) BARK SCRIBED AND TAG  
 - 15° WHITE FIR BEARS N84 1/4°E, 7.7 FEET (RECORD N84°E, 7.26 FEET) WELL HEALED FACE  
 - 20° DOUGLAS FIR BEARS N5 1/4°W, 17.7 FEET (RECORD N4°W, 17.49 FEET) WELL HEALED FACE  
 - 20° WHITE FIR BEARS S83°W, 36.5 FEET (RECORD S83°W, 36.63 FEET) WELL HEALED FACE AND TAG  
 CORNER LIES ON FLAT GROUND APPROXIMATELY 60 FEET WEST OF ROCK ROAD.
- 2) THE NORTH 1/16 CORNER BETWEEN SECTIONS 33 AND 34  
 FOUND ALUMINUM CAP NO RECORD MARKED T34S, R3E N1/16 S33 S34 LS 1086.  
 - 18° INCENSE CEDAR BEARS N12 3/4°E, 28.2 FEET, HEALED FACE WITH SOME VISIBLE SCRIBING  
 - 28° DOUGLAS FIR BEARS N62 1/2°W, 18.9 FEET, HEALED FACE AND B.T. THAT READS S65°E, 24.2 FEET  
 CORNER LIES ON VERY FLAT GROUND WITH RECENT LOGGING TO WEST.
- 3) THE WEST 1/4 CORNER OF SECTION 34  
 FOUND ALUMINUM CAP NO RECORD MARKED T34S R3E 1/4 S35 S34 LS 1086.  
 - 8° CEDAR BEARS N68 1/4°W, 28.0 FEET, VISIBLE SCRIBING AND WASHER THAT SAYS LS 1086 IN FACE  
 - 15° PINE BEARS S6 1/2°W, 47.9 FEET, HEALED FACE  
 - 10° WHITE FIR BEARS S87°E, 21.9 FEET, HEALED FACE AND TAG  
 - 7° PINE BEARS N69 1/2°W, 37.2 FEET, HEALED FACE AND TAG  
 CORNER LIES IN MOUND OF STONES ON FLAT GROUND.
- 4) THE SOUTH 1/16 CORNER BETWEEN SECTIONS 33 AND 34  
 FOUND ALUMINUM CAP NO RECORD MARKED T34S R3E S1/16 S33 S34 LS 1086.  
 - 14° PINE BEARS N29°W, 4.7 FEET, HEALED FACE AND TAG  
 - 11° PINE BEARS N87°E, 24.5 FEET, HEALED FACE AND TAG  
 CORNER LIES IN MOUND OF STONE IN 10 TO 20 YEAR OLD TREES

**NARRATIVE:**

THIS SURVEY WAS CONDUCTED TO LOCATE AND MARK PROPERTY CORNERS AND LINES AS SHOWN HEREON FOR TIMBER CUTTING PURPOSES. IN PRELIMINARY LAYOUT FOR THE SURVEY OF THIS SECTION WE FOUND CORNERS ESTABLISHED BY BLM BRASS CAPS SET FROM ORIGINAL EVIDENCE OR IRON RODS SET BY RAMBO FOR MEDCO IN AN UNRECORDED SURVEY. PROPERTY LINES SHOWN WERE PREVIOUSLY MARKED AND USED BY BOTH BLM AND MEDCO FOR TIMBER CUTTING PURPOSES SINCE 1984. WE INITIATED THIS SURVEY AT THE NORTHWEST CORNER OF SECTION 34 A BLM BRASS CAP BEGINNING A RANDOM TRAVERSE SOUTHERLY TO THE NORTH 1/16 OF SECTION 34 AND THE WEST 1/4 OF SECTION 34 WHICH ARE UNRECORDED RAMBO ALUMINUM CAPS. NEXT WE BEGAN ANOTHER RANDOM TRAVERSE SURVEY BEGINNING AT THE NORTH 1/4 OF SECTION 34 (RAMBO UNRECORDED ALUMINUM CAP) RUNNING SOUTHERLY TO THE CN 1/16 (RAMBO UNRECORDED ALUMINUM CAP), CONTINUING SOUTHERLY TO THE CENTERSOUTH 1/16 (UNRECORDED 5/8" IRON ROD), THEN SOUTHERLY TO THE SOUTH 1/4 OF SECTION 34 A BLM BRASS CAP. NEXT WE BEGAN A GPS SURVEY USING THREE SINGLE FREQUENCY AND TWO DUAL FREQUENCY RECEIVERS AROUND THE SECTION WITH AT LEAST TWO OCCUPATIONS AT EACH CORNER OF THE SECTION AND SOME OF OUR RANDOM TRAVERSE POINTS TO DERIVE BEARINGS AND DISTANCES TO EACH OF THE CORNERS FOUND AS SHOWN. THIS SURVEY WAS DONE WITH A NIKON DTM 450 TOTAL STATION, TRIMBLE 4800, 4000SE AND PRO XR GPS WITH GARY ANGIOLET, MARK DVORCAK AND IGNACIO ROMAN ASSISTING ME.

**CORNER INFORMATION:**

- 5) THE SOUTHWEST SECTION CORNER FOR SECTION 34  
 FOUND 1964 BLM BRASS CAP BENT TO EAST BY RECENTLY CUT TREE.  
 - 11° DOUGLAS FIR BEARS S86 1/2°W, 31.2 FEET (RECORD S86 1/2°W, 31.0 FEET) WELL HEALED DOUBLE BLAZE AND JACKSON COUNTY TAG  
 - 35° WHITE FIR SNAG BEARS N14°W, 30.0 FEET TO FACE (RECORD N14°W, 30.26 FEET TO CENTER)  
 - 25° DOUGLAS FIR STUMP BEARS N18°E, 17.4 FEET TO FACE AS PER RECORD, VISIBLE AXE WORK AND TAG  
 - 11° CEDAR BEARS N27°E, 17.9 FEET AS PER RECORD, HEALED DOUBLE BLAZES AND JACKSON COUNTY TAG  
 - 17° WHITE FIR BEARS S54°E, 25.25 FEET AS PER RECORD, HEALED DOUBLE BLAZES AND TAG  
 CORNER LIES ON FLAT GROUND, CENTERLINE OF EXISTING ROAD BEARS WEST 75 FEET.
- 6) THE SOUTH 1/4 CORNER OF SECTION 34  
 FOUND 1964 BLM BRASS CAP.  
 - 10° PINE BEARS S49 1/4°E, 15.0 FEET (RECORD S50°E, 15.18 FEET) HEALED FACE AND BLM TAG  
 - 9° CEDAR BEARS S10°E, 33.6 FEET (RECORD S10°E, 33.0 FEET) HEALED FACE AND BLM TAG  
 - 13° PINE BEARS N41 1/2°W, 15.5 FEET (RECORD N41°W, 15.84 FEET) HEALED FACE AND BLM TAG  
 - 13° WHITE FIR BEARS N25°W, 28.6 FEET (RECORD N25°W, 28.38 FEET) HEALED FACE AND BLM TAG  
 CORNER LIES ON FLAT GROUND IN MOUND OF STONES, APPROXIMATELY 150 FEET SOUTH OF DIRT ROAD.
- 7) THE CENTERSOUTH 1/16 CORNER FOR SECTION 34  
 FOUND 5/8" IRON ROD NO CAP IN MOUND OF STONES (NO RECORD).  
 - 15° DOUGLAS FIR BEARS N16°W, 17.3 FEET, HEALED BLAZES AND TAG THAT READS S13°E, 17.1 FEET  
 - 15° DOUGLAS FIR BEARS N79 3/4°W, 11.9 FEET, HEALED BLAZES AND TAG THAT READS S84°E, 11.7 FEET  
 CORNER LIES ON FLAT GROUND IN STAND OF 12" TO 18" CONIFER.
- 8) THE CENTERNORTH 1/16 CORNER FOR SECTION 34  
 FOUND 1 1/2" ALUMINUM CAP (NO RECORD) MARKED T34S R3E S34 CN 1/16 LS 1086.  
 - 14° CEDAR BEARS S68 1/4°W, 36.3 FEET PARTIAL SCRIBING VISIBLE IN BOTH BLAZES TAG READS N74°E, 36.58 FEET  
 - 23° FIR STUMP BEARS N36 1/2°E, 39.6 FEET PARTIAL SCRIBING VISIBLE  
 CORNER LIES AT SOUTH EDGE OF CLEARCUT, APPROXIMATELY 15 FEET SOUTH AND 20 FEET EAST OF SMALL STREAM.
- 9) THE 1/4 CORNER BETWEEN SECTIONS 27 & 34  
 FOUND 1 1/2" ALUMINUM CAP (NO RECORD) MARKED T34S R3E 1/4 S27 S34 LS 1086.  
 - 16° DOUGLAS FIR BEARS S47°E, 24.7 FEET PARTIAL SCRIBING VISIBLE IN BOTH BLAZES TAG READS N44°W, 24.5 FEET  
 - 16° PINE BEARS N7 1/2°E, 36.0 FEET PARTIAL SCRIBING VISIBLE TAG READS S9°W 35.8 FEET  
 CORNER LIES ON FLAT GROUND RECENT CLEAR CUT TO SOUTHWEST
- 10) THE NORTHEAST SECTION CORNER OF SECTION 34  
 FOUND 1964 BLM BRASS CAP.  
 - 14° FIR BEARS RECORD N21°51'W, 13.7 FEET WE MEASURE 14.0 FEET HEALED FACE AND BLM TAG  
 - 13° FIR BEARS RECORD N33°30'W, 31.8 FEET WE MEASURE 32.6 FEET HEALED FACE AND BLM TAG  
 - 11° FIR BEARS RECORD S80°44'W, 30.7 FEET WE MEASURE 30.9 FEET HEALED FACE AND BLM TAG  
 - 28° FIR STUMP BEARS RECORD S32°06'W, 27.8 FEET WE MEASURE 27.4 FEET VISIBLE BARK SCRIBING AND BLM TAG  
 - 12° FIR BEARS RECORD S34°38'E, 85.1 FEET WE MEASURE 83.7 FEET HEALED FACE AND BLM TAG  
 CORNER LIES APPROX. 30 FEET NORTH OF DIRT ROAD
- 11) THE 1/4 CORNER FOR SECTIONS 34 AND 35  
 FOUND 1964 BLM BRASS CAP WITH STONE ALONGSIDE.  
 - 18° 5' TALL FIR STUMP BEARS AS PER RECORD N88°45'W, 36.6 FEET HEALED FACE AND BLM TAG  
 - 30° PINE STUMP BEARS RECORD S43°16'W, 18.7 FEET WE MEASURE 18.6 FEET VISIBLE AXE WORK  
 - 13° FIR BEARS RECORD N82°23'E, 14.9 FEET WE MEASURE 15.1 FEET HEALED FACE AND BLM TAG  
 - 17° FIR BEARS RECORD N68°E, 27.8 FEET WE MEASURE 28.0 FEET HEALED FACE AND BLM TAG  
 - 18° 5' TALL FIR STUMP BEARS AS PER RECORD N31°23'W, 38.7 FEET HEALED FACE AND BLM TAG  
 - 34° PINE SNAG BEARS AS PER RECORD N80°22'E, 38.9 FEET PARTIAL VISIBLE SCRIBING  
 CORNER LIES ON FLAT GROUND APPROX. 120 FEET EAST OF END OF NEW ROCK ROAD



REGISTERED PROFESSIONAL LAND SURVEYOR  
 KEN W. HOFFPINE  
 OREGON  
 JULY 16, 1987  
 #2291  
 EXPIRES: 6-30-03

LEGEND	
⊙	FOUND BLM BRASS CAP
○	FOUND UNRECORDED ALUMINUM CAP
○	FOUND UNRECORDED 5/8" IRON ROD
▲	CALCULATED NOT SET
< >	RAMBO 1984 SURVEY #10121 FILED IN JACKSON COUNTY SURVEYORS OFFICE
( )	ORIGINAL BLM FIELD NOTES FILED IN JACKSON COUNTY SURVEYORS OFFICE
—	LINES BLAZED, PAINTED, AND TAGGED THIS SURVEY