

MAP OF SURVEY

(Property Line Adjustment)

Located in:
 Lots 5, 6 and 7 of SKYPARK CENTER SUBDIVISION
 in the Northeast 1/4 of Section 18,
 Township 37 South, Range 1 West, W.M.,
 City of Medford, Jackson County, Oregon

For:
JOHN A. DUKE/CLIFF NOTES
 1109 RIVER ROCK WAY
 MEDFORD, OREGON 97504

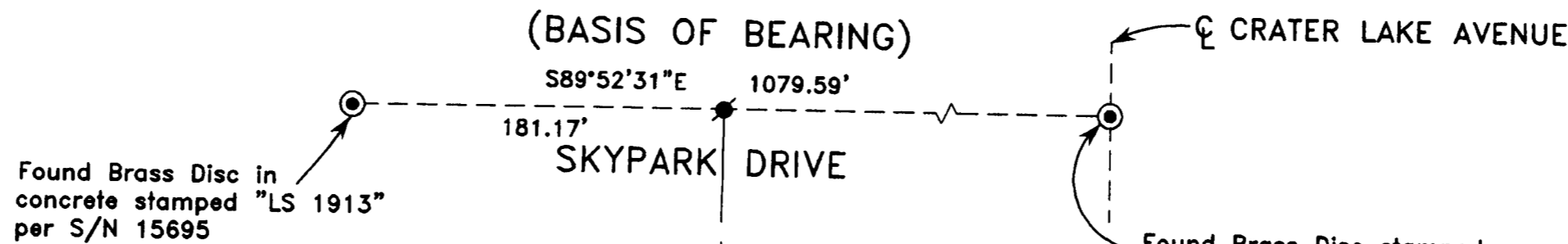
SURVEY NARRATIVE TO COMPLY WITH PARAGRAPH 209.250 OREGON REVISED STATUTES

PURPOSE: To monument, prepare descriptions and a map of survey for a property line adjustment, as per the client's request and as shown hereon. Combining Lots 5, 6 and 7 and resulting with only two tracts.

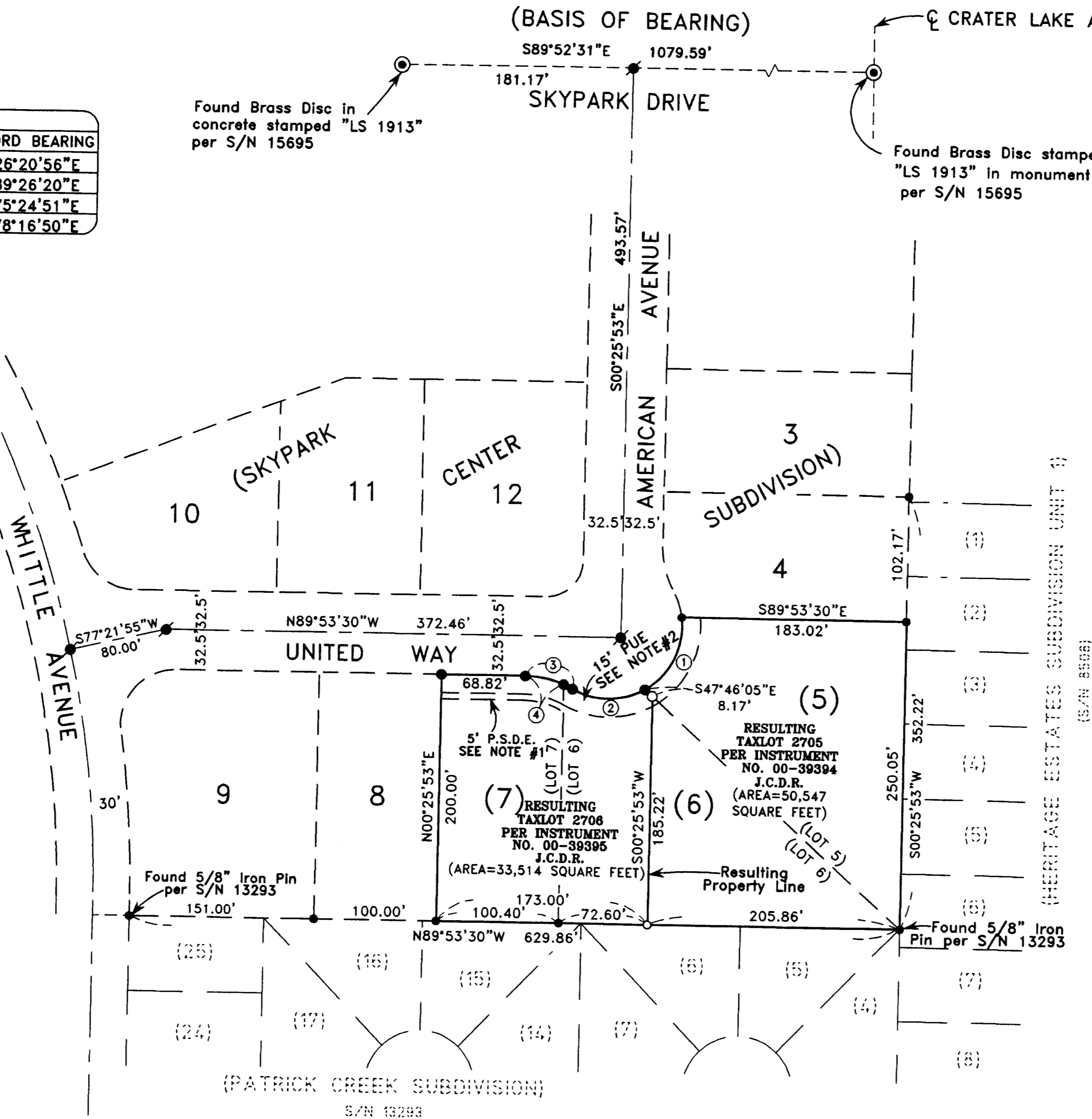
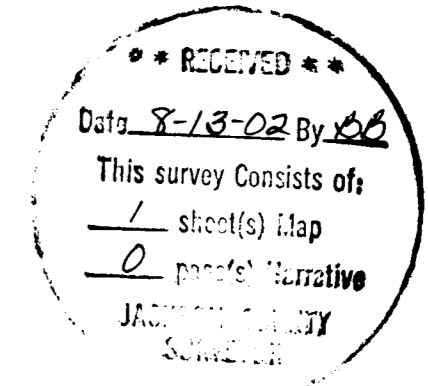
PROCEDURE: Utilizing found monumentation per Filed Survey no. 15695 of SKYPARK CENTER SUBDIVISION for control, I set monuments as shown hereon. An electronic total station was used to make all measurements.

CURVE TABLE					
CURVE	DELTA	RADIUS	LENGTH	CHORD	CHORD BEARING
1	66°55'52"	60.00	70.09	66.17	N26°20'56"E
2	59°14'56"	60.00	62.05	59.32	N89°26'20"E
3	28°57'18"	80.00	40.43	40.00	S75°24'51"E
4	23°13'20"	80.00	32.42	32.20	S78°16'50"E

- NOTE:
- 5' PRIVATE STORM DRAINAGE EASEMENT PER PLAT OF SKYPARK CENTER SUBDIVISION.
 - 15' PUBLIC UTILITY EASEMENT PER PLAT OF SKYPARK CENTER SUBDIVISION.



Found Brass Disc stamped "LS 1913" in monument case per S/N 15695



HOFFBUHR & ASSOCIATES, INC.
 1062 E. JACKSON STREET MEDFORD, OREGON
 (541)779-4641
 BY: DOUGLAS C. McMAHAN PLS No. 1913
 SCALE: 1" = 80' JULY 17, 2002
 BASIS OF BEARING: SKYPARK DRIVE
 S/N 15695

- = SET 5/8"X24" REBAR WITH PLASTIC CAP STAMPED "D.McMAHAN LS 1913".
- = FOUND 5/8" IRON PIN WITH PLASTIC CAP STAMPED "D.McMAHAN LS 1913" IN LOCATION, PER PLAT OF SKYPARK CENTER SUBDIVISION, UNLESS NOTED OTHERWISE
- = FOUND 5/8" REBAR WITH METAL CAP IN LOCATION PER PLAT OF SKYPARK CENTER SUBDIVISION STAMPED "LS 1913".
- S/N = FILED SURVEY NUMBER
- PUE = EASEMENT FOR PUBLIC UTILITIES, STORM DRAINAGE, IRRIGATION, GAS, WATER, ELECTRIC, TELEPHONE, CABLE TELEVISION AND SANITARY SEWER CONSTRUCTION AND MAINTENANCE
- P.S.D.E. = PRIVATE STORM DRAINAGE EASEMENT FOR INSTALLATION AND MAINTENANCE OF STORM DRAINAGE FACILITIES.
- J.C.D.R. = JACKSON COUNTY DEED RECORDS

REGISTERED
 PROFESSIONAL
 LAND SURVEYOR
Douglas C. McMahan
 OREGON
 JULY 18, 1896
 DOUGLAS C. McMAHAN
 No. 1913
 EXPIRES 12/31/02