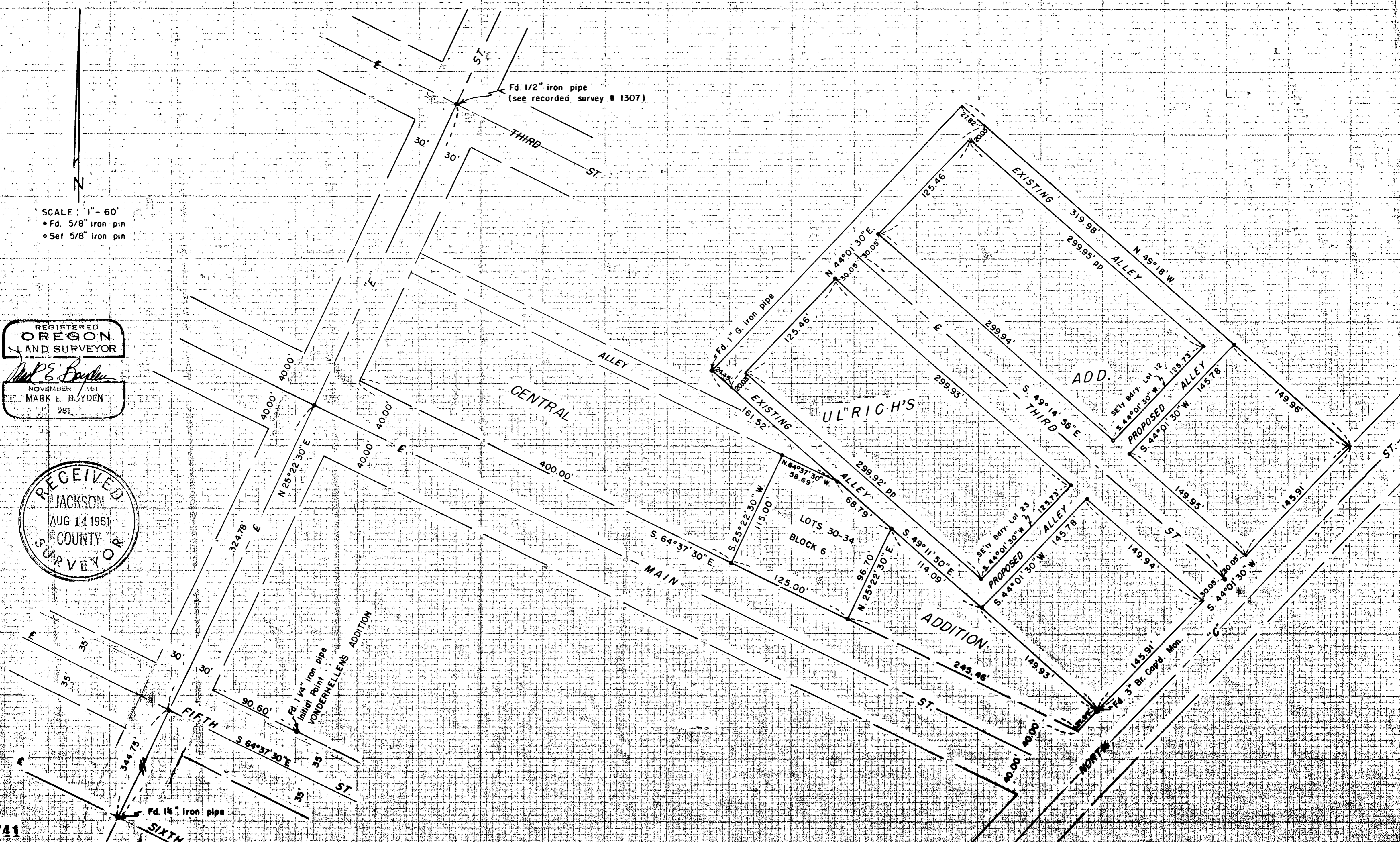


Survey For
 CITY OF EAGLE POINT, OREGON
 Located in ULRICH'S ADDITION &
 CENTRAL ADDITION
 By: Mark E. Boyden
 August, 1961

SCALE: 1" = 60'
 • Fd. 5/8" iron pin
 • Set 5/8" iron pin

REGISTERED
 OREGON
 LAND SURVEYOR
Mark E. Boyden
 NOVEMBER 1951
 MARK E. BOYDEN
 281

RECEIVED
 JACKSON
 AUG 14 1961
 COUNTY
 SURVEYOR



SURVEY NARRATIVE TO COMPLY WITH O.R.S. 209.250

FOR: City of Eagle Point, Oregon

- PURPOSE: 1. To monument the outside boundaries of Lots 30-34, Block 6 of CENTRAL ADDITION.
2. To monument and prepare legal descriptions for the new proposed alley in ULRICH'S ADDITION, and a description for the vacation of those alley portions lying South-easterly from the new proposed alley.

PROCEDURE:

From previous control surveys in this area (See recorded Survey Nos. 1307 & 1418), the boundaries of ULRICH'S ADDITION and the centerline of "E" Street were established.

Using for control of Fifth Street, the initial point of WONDER BELLEN'S ADDITION and a 2" iron pin found for the most-Easterly corner of Lot No. 24, Block No. 9 of CENTRAL ADDITION for control of Main Street, right angles from said "E" Street centerline through the above mentioned controls were used for centerline control of 5th and Main Streets. The centerline intersections of Main and 5th Streets with the centerline of "E" Street were then monumented with 5/8" iron pins set in concrete flush with the pavement.

The Lots in CENTRAL ADDITION were then monumented plat record distance Easterly from the centerline of "E" Street as shown.

The alley in ULRICH'S ADDITION was monumented with 5/8" iron pins by proportionate measurement from controls as shown on the accompanying map.

August 1961

