

AGATE SUBDIVISION EXTENSION NO. 5

BEING PORTIONS OF LOTS 172 173 174 & 178 OF ROGUELANDS IRRIGATED ORCHARD TRACTS LOCATED IN SECS. 21 & 22, T. 36S., R. 1W., W.M.

DEDICATION

KNOW ALL MEN BY THESE PRESENTS THAT WE CLAUD W. HOOVER, DORIS HOOVER, C.C. HOOVER, ELSIE HOOVER, MELVIN F. HOOVER, ROSALIND O. HOOVER, AND MELVIN F. HOOVER TRUSTEE FOR MICHAEL C. HOOVER, CLAUD W. HOOVER, AND CHARLES A. HOOVER ARE THE OWNERS IN FEE SIMPLE OF THE LANDS HEREON DESCRIBED AND THAT WE HAVE SUBDIVIDED THE SAME INTO LOTS, BLOCKS AND STREETS AS SHOWN HEREON, AND THE NUMBER AND SIZE OF THE LOTS AND THE LENGTH OF ALL LINES ARE PLAINLY SET FORTH, AND THAT THIS PLAT IS A CORRECT REPRESENTATION OF THE SAID SUBDIVISION, AND WE DO HEREBY DEDICATE TO THE PUBLIC FOR PUBLIC USE ALL STREETS AS SHOWN HEREON, AND WE DO HEREBY DESIGNATE SAID SUBDIVISION AS AGATE SUBDIVISION EXTENSION NO. 5.

IN WITNESS WHEREOF WE HAVE SET OUR HANDS AND SEALS THIS 27th DAY OF April, 1961.
Claud W. Hoover Elsie Hoover
Doris Hoover Melvin F. Hoover
C.C. Hoover Rosalind O. Hoover

TRUSTEE FOR MICHAEL C. HOOVER, CLAUD W. HOOVER, AND CHARLES A. HOOVER
Melvin F. Hoover

STATE OF OREGON)
COUNTY OF JACKSON)
April 27 AD 1961.
PERSONALLY APPEARED THE ABOVE NAMED ELSIE HOOVER, CLAUD W. HOOVER, DORIS HOOVER, C.C. HOOVER, MELVIN F. HOOVER, ROSALIND O. HOOVER, AND MELVIN F. HOOVER TRUSTEE FOR MICHAEL C. HOOVER, CLAUD W. HOOVER, AND CHARLES A. HOOVER AND ACKNOWLEDGED THE FOREGOING INSTRUMENT TO BE THEIR VOLUNTARY ACT AND DEED BEFORE ME.

Lorain A. Beard
Notary Public for Oregon
MY COMMISSION EXPIRES THE 17th DAY OF May, 1963.
EXAMINED AND APPROVED BY THE JACKSON COUNTY PLANNING COMMISSION IN REGULAR SESSION THIS 1st DAY OF August, 1961.
ATTEST: Daniel S. Roney Cojourney
Secretary President

EXAMINED AND APPROVED BY THE ROGUE RIVER VALLEY IRRIGATION DISTRICT IN REGULAR SESSION THIS 2nd DAY OF May, 1961.
ATTEST: Harold W. Lytton Otto Bohner
Secretary President

EXAMINED AND APPROVED THIS 24th DAY OF July, 1961.
Thad W. Hatten
County Assessor

ALL TAXES PAID IN FULL TO DATE THIS 25th DAY OF July, 1961.
Joseph D. Walsh
County Sheriff

EXAMINED AND RECOMMENDED FOR APPROVAL BY THE COUNTY COURT THIS THE 1st DAY OF August, 1961.
Mark E. Snyder
County Surveyor

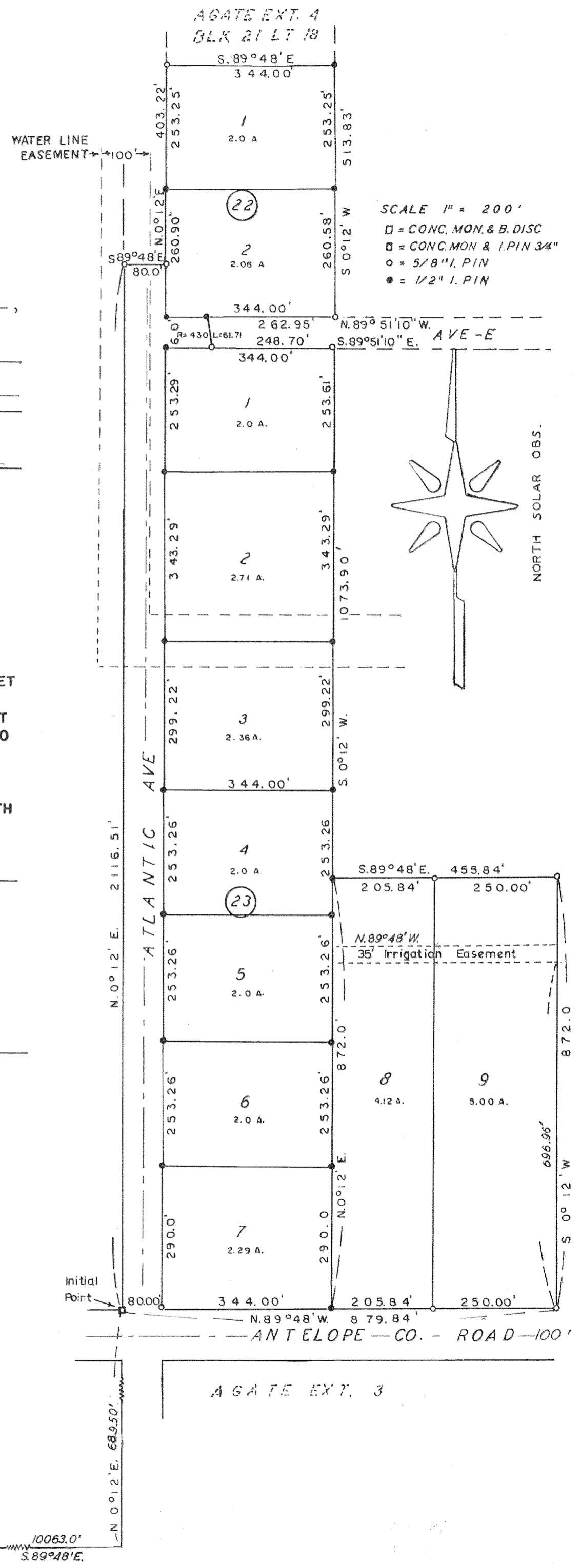
FOR ORDER OF THE COUNTY COURT APPROVING THIS PLAT SEE VOLUME 54 PAGE 571 OF COUNTY COMMISSIONER'S JOURNAL OF PROCEEDINGS.
Emmadd
County Clerk
FILES FOR RECORD THIS THE 2nd DAY OF August, 1961 AT 12:51 O'CLOCK P.M. AND RECORDED IN VOLUME 8 OF PLATS AT PAGE 50 OF RECORDS OF JACKSON COUNTY
Emmadd
County Clerk

SURVEYOR'S CERTIFICATE

STATE OF OREGON)
COUNTY OF JACKSON)
I, EDWARD A. MCGINTY, A DULY REGISTERED SURVEYOR OF THE STATE OF OREGON, BEING FIRST DULY SWORN, DO HEREBY CERTIFY THAT I HAVE CORRECTLY SURVEYED AND MARKED WITH PROPER MONUMENTS AS PROVIDED BY LAW THE TRACT OF LAND HEREON AS SHOWN AND THE SAID PLAT IS A CORRECT REPRESENTATION OF THE SAME AND THE FOLLOWING IS AN ACCURATE DESCRIPTION OF THE BOUNDARY LINES; COMMENCING AT AN IRON SPIKE AT THE EAST 1/4 CORNER OF SECTION 19, OF TOWNSHIP 36 SOUTH, RANGE 1 WEST, WILLAMETTE MERIDIAN, JACKSON COUNTY, OREGON; THENCE S. 89° 48' E., 10,063.0 FEET THENCE N. 0° 12' E., 689.50' TO A CONCRETE MONUMENT FOR THE INITIAL POINT, BEING ON THE NORTH LINE OF ANTELOPE ROAD; THENCE N. 0° 12' E. 2116.51 FEET; THENCE S. 89° 48' E. 80 FEET; THENCE N. 0° 12' E. 403.22 FEET TO THE S.W. CORNER OF LOT 18 BLOCK 21 OF THE AGATE SUB-DIVISION EXT. NO 4; THENCE S. 89° 48' E. 344.00 FEET; THENCE S. 0° 12' W. 513.83 FEET TO THE NORTH LINE OF AVE. E.; THENCE N. 89° 51' 10" W. 262.95 FEET TO A POINT ON CURVE HAVING A RADIUS OF 430.0 FEET; THENCE ON SAID CURVE ON AN ARC (LONG CHORD BEARS S. 13° 10' 10" E., 61.65') 61.71 FEET; THENCE S. 89° 51' 10" E., 248.70 FEET; THENCE S. 0° 12' W., 1073.90 FEET; THENCE S. 89° 48' E., 455.84 FEET; THENCE S. 0° 12' W. 872 FEET TO THE NORTH LINE OF ANTELOPE ROAD; THENCE N. 89° 48' W. 879.84 FEET TO THE INITIAL POINT.

SUBSCRIBED AND SWORN TO BEFORE ME THIS 27th DAY OF April, 1961.
Edward A. McGinty
SURVEYOR
Alfred R. Johnson
NOTARY PUBLIC FOR OREGON
MY COMMISSION EXPIRES THE 25th DAY OF August, 1962.

I HEREBY CERTIFY THAT THIS TRACING IS AN EXACT COPY OF THE ORIGINAL PLAT FILED WITH THE COUNTY CLERK.
Edward A. McGinty
SURVEYOR



B: 1/4 COR. SEC. 19 SPIKE
10063.0'
S. 89° 48' E.

SUBJECT: Agate Sub-division Ext. No. 5.

Compliance with Jackson County Sub-division Ordinance 5.2.3.

Bearing: Solar observation.

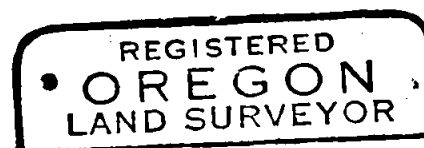
Antelope Road was determined from previous surveys and Sub-div. of Agate Sub-division Ext. No. 3.

Ave. C was determined by projecting Ave. C on Agate Sub-div. Ext. No. 4 to the intersection of Atlantic Ave.

Atlantic Ave. was projected southerly from Agate Sub-div. Ext. No. 4 to the northerly line of Antelope Road.

The southerly line of Lot 18 Blk. 21 of Agate Sub-div. Ext. No. 4 is identical to the northerly line of Lot 1 Blk. 22 of this Sub-div.

Lot 9 Blk. 23 of this Sub-div. was previously surveyed as a tract adjacent to Agate Sub-div. Ext. No. 3. This survey is of record.



Edward A. McGinty

JULY 19, 1953
EDWARD A. MCGINTY
301