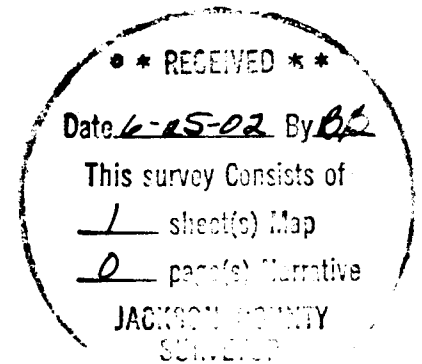


LONE ROCK TIMBER CO.

SURVEY BY: LONE ROCK TIMBER CO.
 PO BOX 1127 ROSEBURG, OREGON 97470 LONE ROCK SURVEY: M36-3E-1 TRACT
 SECTION 1, TOWNSHIP 34 SOUTH, RANGE 3 EAST, W.M. JACKSON COUNTY, ORE.
 SCALE: 1" = 400' JULY, 2002



NARRATIVE:

THIS SURVEY WAS CONDUCTED TO ESTABLISH PROPERTY CORNERS AND PROPERTY LINES FOR TIMBER CUTTING PURPOSES. WE INITIATED THIS SURVEY AT THE NORTHEAST CORNER OF SECTION 1 A BLM BCIP SET FROM ORIGINAL EVIDENCE. WE BEGAN A RANDOM TRAVERSE WESTERLY ALONG THE NORTH LINE OF SECTION 1 WITH A SEARCH OF ORIGINAL EVIDENCE FOR THE NORTH 1/4 OF THE SECTION 1. FINDING NO EVIDENCE FOR THE NORTH 1/4 WE CONTINUED OUR RANDOM TRANVERSE WESTERLY TO THE NORTHWEST CORNER OF SECTION 1 A BLM BCIP SET FROM ORIGINAL EVIDENCE. USING GPS WE CHECKED OUR CLOSURE FROM CONTROL POINTS NEAR THE NE SECTION CORNER, TRAVERSE POINTS NEAR THE NORTH 1/4 LOCATION AND ON THE NORTHWEST SECTION CORNER. WE COMPUTED AND SET AT PROPORTION THE NORTH 1/4 CORNER. WE THEN RIBBONED, BLAZED, PAINTED AND TAGGED THE PROPERTY LINE AS SHOWN. THIS SURVEY WAS DONE WITH A NIKON DTM 450 TOTAL STATION WITH TRIMBLE 4000SSE, 4000SE AND 4400 GPS RECEIVERS. I WAS ASSISTED ON THIS SURVEY BY GARY ANGIOLET, IGNACIO ROMAN, AND MARK DVORSCAK.

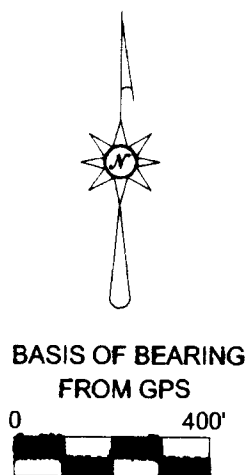
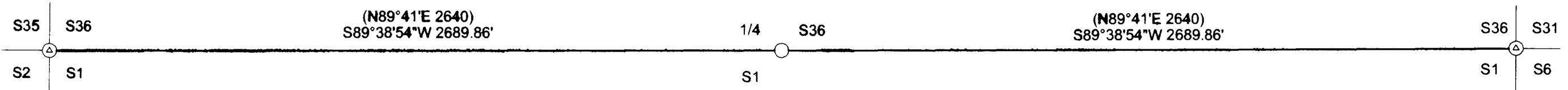
FOUND 1964 BLM CAP IN GOOD CONDITION

- 19° INCENSE CEDAR BEARS S14 3/4°W 77.0 FEET (RECORD S15°W 77.2 FEET) HEALED FACE AND TAG
- 25° WHITE FIR BEARS S47 1/4°E 62.6 FEET (RECORD S48°W 62.7 FEET) HEALED FACE AND TAG
- 32° INCENSE CEDAR BEARS N74°W 124.5 FEET (RECORD N74°W 124.7 FEET) HEALED FACE AND TAG
- 27° WHITE FIR BEARS N21 1/4°E 90.7 FEET (RECORD N21°W 90.2 FEET) HEALED FACE AND TAG
- SHELL OF ORIGINAL BT BEARS N21°E 18.8 FEET (RECORD N25°E 18.5 FEET)
- 21° WHITE FIR BEARS N49 1/4°E 39.2 FEET (RECORD N59°E 39.6 FEET) WELL HEALED DOUBLE BLAZES WITH NO TAG
- 10° YEW WHICH BEARS S56°W 55.4 FEET IS DOWN AND OUT OF POSITION CORNER LIES IN MIDDLE OF SMALL OPENING IN LARGE MOUND OF STONES

- SET 5/8" X 40" IRON ROD WITH ALUMINUM CAP MARKED LONE ROCK TIMBER T 33 S R 3 E S36 1/4 T34 S R 3 E S1 2002 PLS 2291
- 8" DOUGLAS FIR BEARS S47 1/4°W 25.6 FEET WE SCRIBE 1/4 T 34 S R 3 E S1 BT AND TAG TREE
- 7" WHITE FIR BEARS S71 1/2°E 29.75 FEET WE SCRIBE 1/4 T 34 S R 3 E S1 BT AND TAG TREE
- 12" WHITE FIR BEARS N12 1/4°E 26.0 FEET WE SCRIBE 1/4 T33 S R 3 E S36 BT AND TAG TREE
- 12" WHITE FIR BEARS N17 1/4°W 16.8 FEET WE SCRIBE 1/4 T 33 S R 3 E S36 BT AND TAG TREE
- CORNER LIES ON FLAT GROUND APPROX. 75 FEET NORTH OF DIRT ROAD

FOUND 1964 BLM CAP IN GOOD CONDITION

- 16" WHITE FIR BEARS S37 1/2°E 74.0 FEET (RECORD S38°E 73.92 FEET) WELL HEALED FACE AND TAG
- 17" WHITE FIR BEARS N55 1/2°E 9.7 FEET (RECORD N57°E 9.9 FEET) WELL HEALED FACE AND TAG
- 23" WHITE FIR BEARS N30 1/4°W 65.2 FEET (RECORD N34°W 65.34 FEET) WELL HEALED FACE AND TAG
- 18" WHITE FIR BEARS S49 1/2°W 9.3 FEET (RECORD S49°W 9.24 FEET) WELL HEALED FACE AND TAG
- CORNER LIES IN NORTH - SOUTH FENCE LINE APPROX. 25 FEET WEST OF ROCK ROAD



REGISTERED PROFESSIONAL LAND SURVEYOR
Ken W. Hoffine
 OREGON
 KEN W. HOFFINE
 JULY 16, 1987
 #2291

EXPIRES: 6-30-03

LEGEND	
○	SET 5/8" X 40" IRON ROD WITH ALUMINUM CAP
⊙	FOUND BLM BRASS CAP
()	ORIGINAL BLM FIELD NOTES FILED IN JACKSON COUNTY SURVEYORS OFFICE
—	LINES BLAZED, PAINTED, AND TAGGED THIS SURVEY