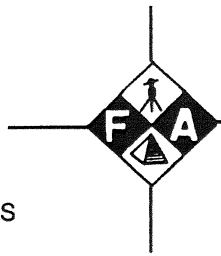


02 26724

TELEPHONE
541-772-2782



L. J. FRIAR AND ASSOCIATES, P. C.
CONSULTING LAND SURVEYORS

17329

FAX
541-772-8465

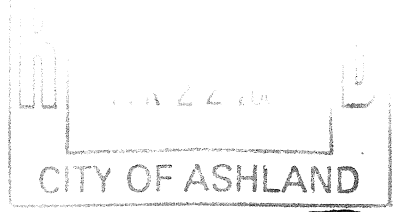
1:28

10
2
11

JAMES E HIBBS, PLS

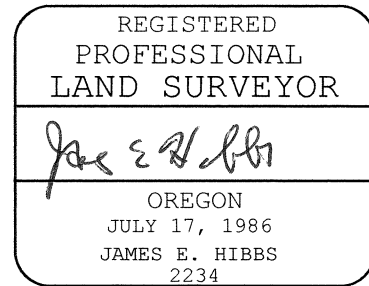
816 WEST 8TH STREET
MEDFORD, OREGON 97501

ljfriar@mcleodusa.net



AFFIDAVIT OF MONUMENTATION FOR DEFERRED MONUMENTS
Pursuant to O.R.S. 92.070

KNOW ALL MEN BY THESE PRESENTS, that I, James E. Hibbs, Registered Professional Land Surveyor of Oregon No. 2234, do hereby affirm that I have established with the proper monuments, the Street monuments and Subdivision corners shown as deferred on the Official Plat of **MOUNTAIN CREEK ESTATES, A PLANNED COMMUNITY, PHASE 2** and filed as Survey No. 15930 in the Jackson County Surveyor's Office. The only differences from the monuments shown on the Official Plat are shown on the attached Exhibit "A".



RENEWAL DATE 6-30-03

STATE OF OREGON)
) ss
COUNTY OF JACKSON)

Signed before me this 13th day of May, 2002.
By James E. Hibbs.

Karen Lafitte
Notary Public of Oregon



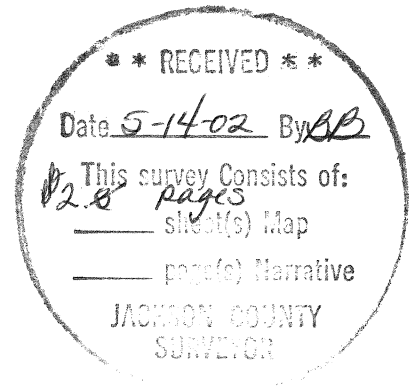
Approved: *Jan Olson* 4/23/02
Ashland City Surveyor Date

Examined and approved this 13TH day of May, 2002.

Roger Roberts
Jackson County Surveyor

12/46
126/16

102



17329

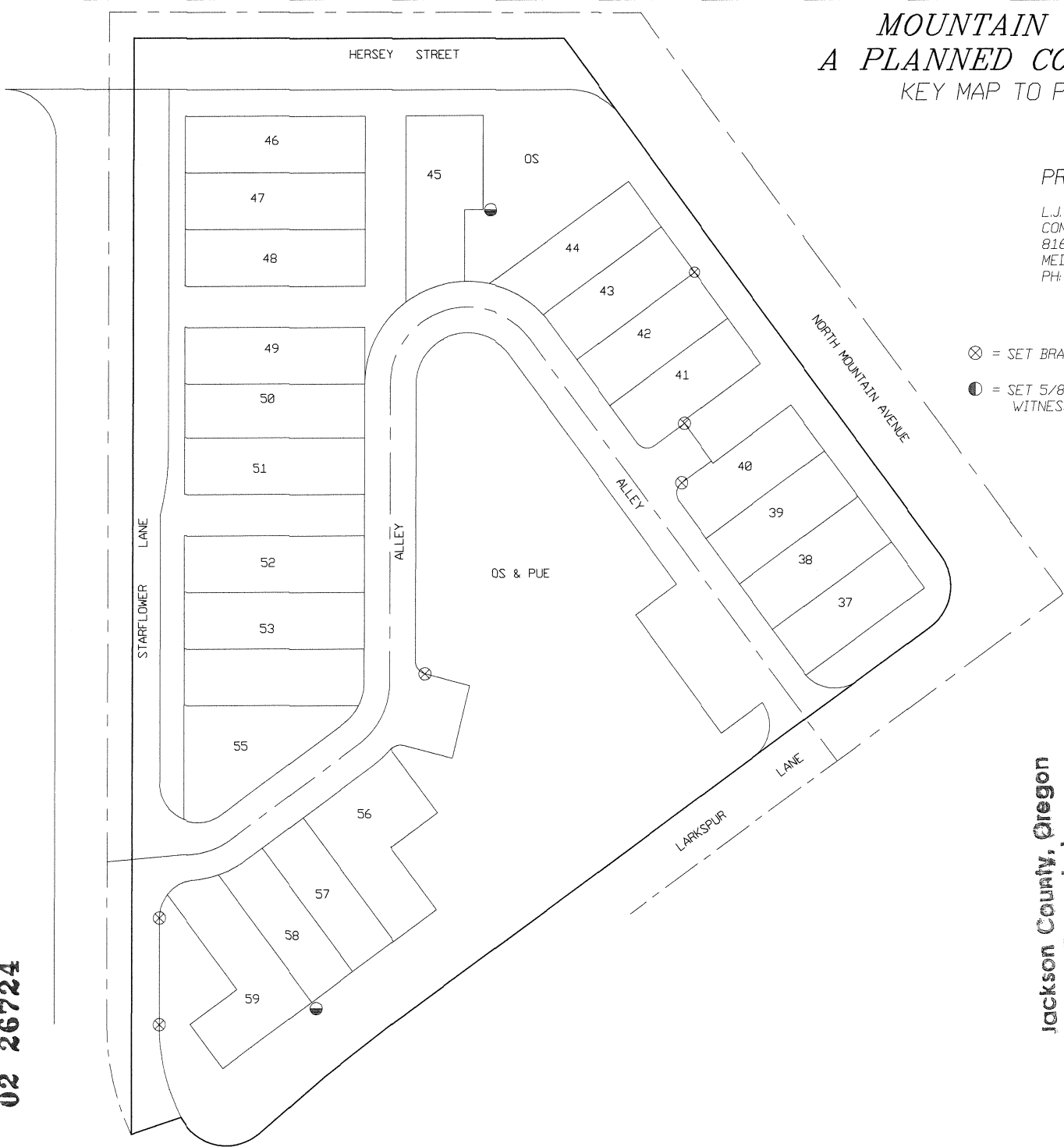
02 26724

MOUNTAIN CREEK ESTATES, A PLANNED COMMUNITY, PHASE 2 KEY MAP TO POST MONUMENTATION

PREPARED BY:

L.J. FRIAR & ASSOCIATES, P.C.
CONSULTING LAND SURVEYORS
816 WEST 8TH STREET
MEDFORD, OR 97501
PH: 772-2782

- ⊗ = SET BRASS TAG MKD. LS2234 IN LEAD PLUG IN CONCRETE.
- = SET 5/8" REBAR W/YELLOW PLASTIC CAP MKD. "L.J. FRIAR & ASSOC." WITNESS MONUMENT, 100 FEET FROM ACTUAL CORNER.



Jackson County, Oregon
Recorded
OFFICIAL RECORDS

MAY 14 2002
1:28 P M
Stephanie J. Condit
COUNTY CLERK

2