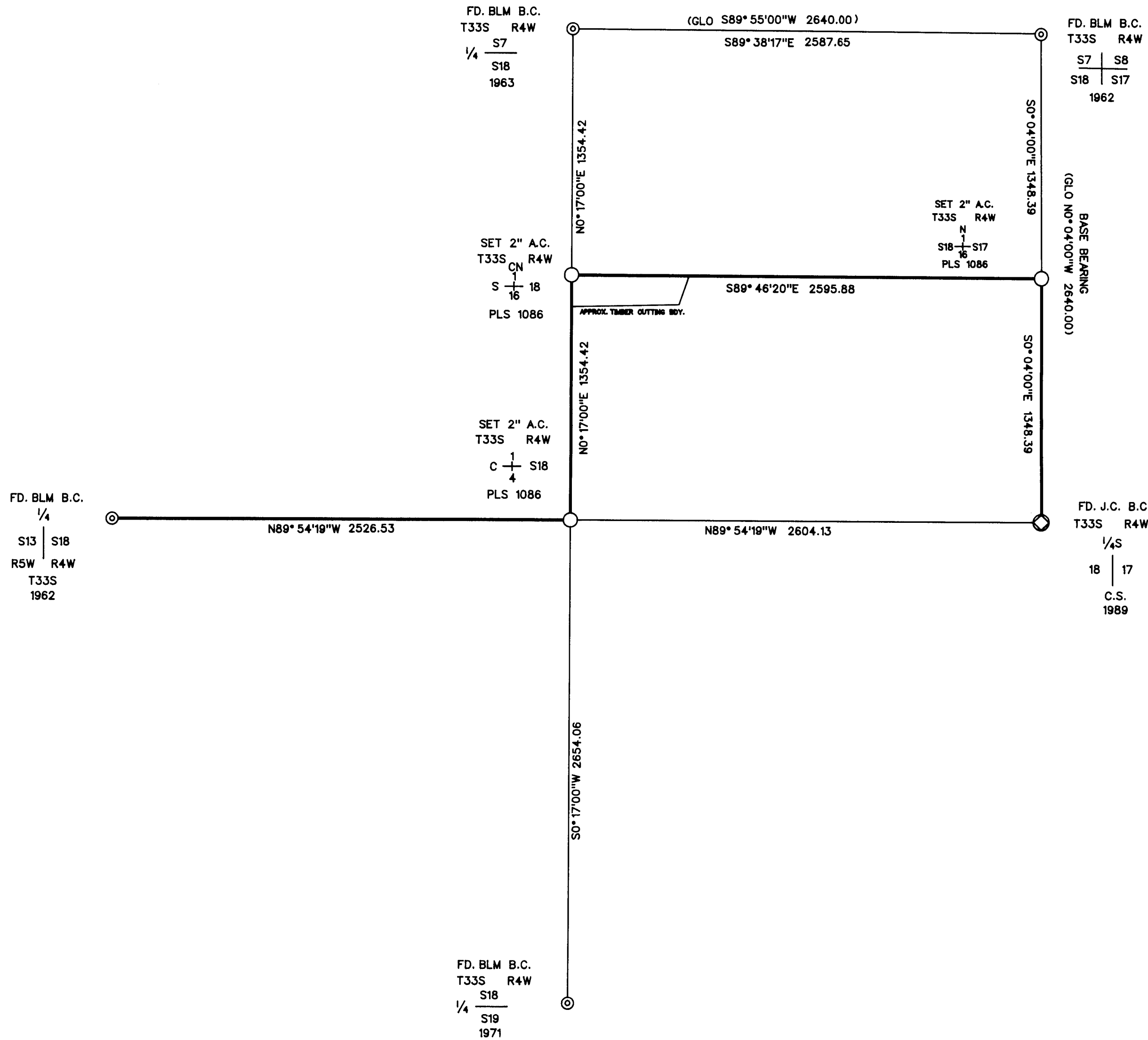


MAP OF SURVEY

LOCATED IN SECTION 18,
TOWNSHIP 33 SOUTH, RANGE 4 WEST,
WILLAMETTE MERIDIAN,
JACKSON COUNTY, OREGON

** RECEIVED **
Date 4-18-02 By AR
This survey consists of:
1 sheet(s) Map
3 page(s) Narrative
JACKSON COUNTY
SURVEYOR



SURVEY FOR

BOISE CASCADE CORP.
TIMBER AND WOOD PRODUCTS GROUP
P.O. BOX 100
MEDFORD, OREGON 97501

LEGEND

- ⊙ FOUND 3/4" BUREAU OF LAND MANAGEMENT BRASS CAP
- ⊙ FOUND 2 1/2" JACKSON COUNTY BRASS CAP
- SET 5/8" BY 30" IRON PIN WITH 2" ALUM. CAP MARKED PLS 1086
- () RECORD DATA GLO PLAT
- LINE MARKED AND POSTED THIS SURVEY

BASIS OF BEARING

GLO PLAT

SCALE

1" = 500'

DATE

APRIL 15, 2002

SURVEY BY

RAMBO SURVEYING
ARTHUR R. RAMBO
735 VISTA PARK DRIVE
EAGLE POINT, OREGON 97524

REGISTERED
PROFESSIONAL
LAND SURVEYOR
Arthur R. Rambo
OREGON
JULY 30, 1976
ARTHUR R. RAMBO
NO 1086

EXPIRES DECEMBER 31, 2002

SURVEY NARRATIVE TO COMPLY WITH O.R.S. 209.250

LOCATION: Section 18, Township 33 South, Range 4 West, Willamette Meridian, Jackson County, Oregon.

SURVEY FOR: Boise Cascade Corp.
P.O. Box 100
Medford, Oregon
97501

SURVEY BY: Rambo Surveying
Arthur R. Rambo
735 Vista Park Drive
Eagle Point, Oregon 97524

DATE: April 15, 2002

BASIS OF BEARING: G.L.O. Plat (North half of East Line)

PURPOSE: To survey, mark, and post certain property lines for Boise Cascade Corporation, in Section 18, as shown on the map to accompany this narrative.

PROCEDURE: A search of records revealed that the corners of Section 18 needed for control of this survey had been re-established from original evidence.

A closed traverse was run tying to these corners for control of this survey. The subdivision of Section 18 was then calculated. The monuments were set and lines were marked, with red painted blazes and Aluminum tags stamped P/L BCC, as shown on the map to accompany this narrative.

CORNERS SET THIS SURVEY:

All measurements to bearing trees are to the center of tree at base. All bearing trees have a Brass washer marked PLS 1086 nailed to lower face.

Centernorth one-sixteenth corner of Section 18, Township 33 South, Range 4 West. At the corner point I set a 5/8 by 30 inch iron pin with a 2" diameter Aluminum cap marked:

T33S R4W
1
CN + S18
16
PLS 1086

FROM WHICH:

A 10 inch diameter Douglas Fir bears N26°15'W, 45.7 feet, marked CN1/16S18 in upper face, BT in lower face.

An 8 inch diameter Douglas Fir bears S4°02'E, 32.9 feet, marked CN1/16S18 in upper face, BT in lower face.

North one-sixteenth corner common to Section 18 and Section 17, Township 33 South, Range 4 West. At the corner point I set a 5/8 by 30 inch iron pin with a 2" diameter Aluminum cap marked:

T33S R4W
N
1
S18 + S17
16
PLS 1086

FROM WHICH:

A 5 inch diameter Noble Fir bears N29°19'E, 112.8 feet , marked N1/16S17 in upper face, BT in lower face.

An 11 inch diameter Noble Fir bears S37°55'W, 38.8 feet , marked N1/16S18 in upper face, BT in lower face.

Center one-quarter corner Section 18, Township 33 South, Range 4 West. At the corner point I set a 5/8 by 30 inch iron pin with a 2" diameter Aluminum cap marked:

T33S R4W
1
C + S18
4
PLS 1086

FROM WHICH:

A 7 inch diameter Douglas Fir bears N56°16"E, 27.0 feet, marked C1/4 S18 in upper face, BT in lower face.

A 7 inch diameter Douglas Fir bears S83°22E, 7.9 feet, marked C1/4 S18 in upper face, BT in lower face.

A 10 inch diameter Douglas Fir bears S51°22”W, 11.1 feet, marked C1/4 S18 in upper face, BT in lower face.

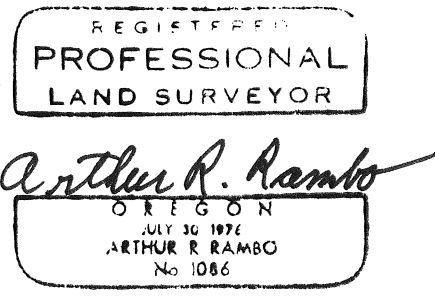
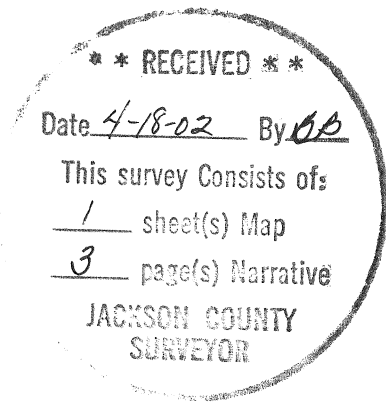
A 7 inch diameter Douglas Fir bears N66°52”W, 14.8 feet, marked C1/4 S18 in upper face, BT in lower face.

At the West one-quarter corner I marked a new bearing tree.

A 9.5 inch diameter Douglas Fir bears S61°56’E, 61.7 feet , marked 1/4 S18 in upper face, BT in lower face.

At the South one-quarter corner I marked a new bearing tree.

A 10.5 inch diameter Douglas Fir, bears N37°05’E, 34.6 feet marked 1/4 S18 in upper face, BT in lower face



Expires December 31, 2002

Tax Lot No. 35-4W (2800 & 3000)