

** RECEIVED **
 Date 4-15-02 By AM
 This survey consists of:
 1 sheet(s) Map
 2 page(s) Narrative
 JACOBSON COUNTY
 SURVEYOR

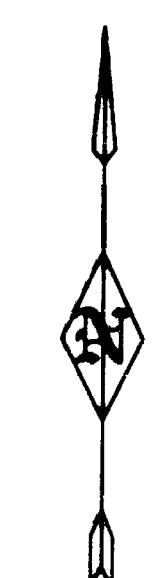
MAP OF SURVEY

FOR
JAMES MILLER

LOCATED IN THE NW AND NE 1/4 OF
SECTION 33, T.38S., R.2E., W.M.

BY
GEORGE BURRELL, P.L.S.
2305-C ASHLAND STREET #261
ASHLAND, OREGON 97520

MARCH 20, 2002



SCALE: 1"=400'

LEGEND

- SET 5/8" x 24" IRON PIN TAGGED PLS 638
- INDICATES MONUMENT FOUND AS NOTED
- △ INDICATES CALCULATED POSITION
- EXISTING FENCE
- LINES MARKED FOR NEW FENCE CONSTRUCTION
- S.N. INDICATES SURVEY NUMBER
- C.S. INDICATES COUNTY SURVEYOR

BASIS OF BEARINGS

Oregon State Plane (South Zone) NAD 27, rotated 1°26'10" C.C.W. to TRUE at the S.W. corner of Section 33. Distances shown are Grid divided by 0.99985. The location and values of these State Plane coordinates are on file in the Office of the Jackson County Surveyor as Job File No. 95-17.

REGISTERED
 PROFESSIONAL
 LAND SURVEYOR
George Burrell
 OREGON
 JULY 10, 1964
 GEORGE R. BURRELL
 638
 MY CERTIFICATE EXPIRES
 DECEMBER 31, 2003

RECEIVED
 Date 4-15-02 By [Signature]
 This survey consists of:
 1 sheet(s) Map
 2 pages Narrative
 JACSON COUNTY SURVEYOR

MAP OF SURVEY

FOR
 JAMES MILLER

LOCATED IN THE NW AND NE 1/4 OF
 SECTION 33, T.38S., R.2E., W.M.

BY
 GEORGE BURRELL, P.L.S.
 2305-C ASHLAND STREET #261
 ASHLAND, OREGON 97520

MARCH 20, 2002



SCALE: 1"=400'

LEGEND

○	SET 5/8" x 24" IRON PIN TAGGED PLS 638
⊕	INDICATES MONUMENT FOUND AS NOTED
△	INDICATES CALCULATED POSITION
—x—x—	INDICATES EXISTING FENCE
~~~~~	INDICATES LINES MARKED FOR NEW FENCE CONSTRUCTION
S.N.	INDICATES SURVEY NUMBER
C.S.	INDICATES COUNTY SURVEYOR

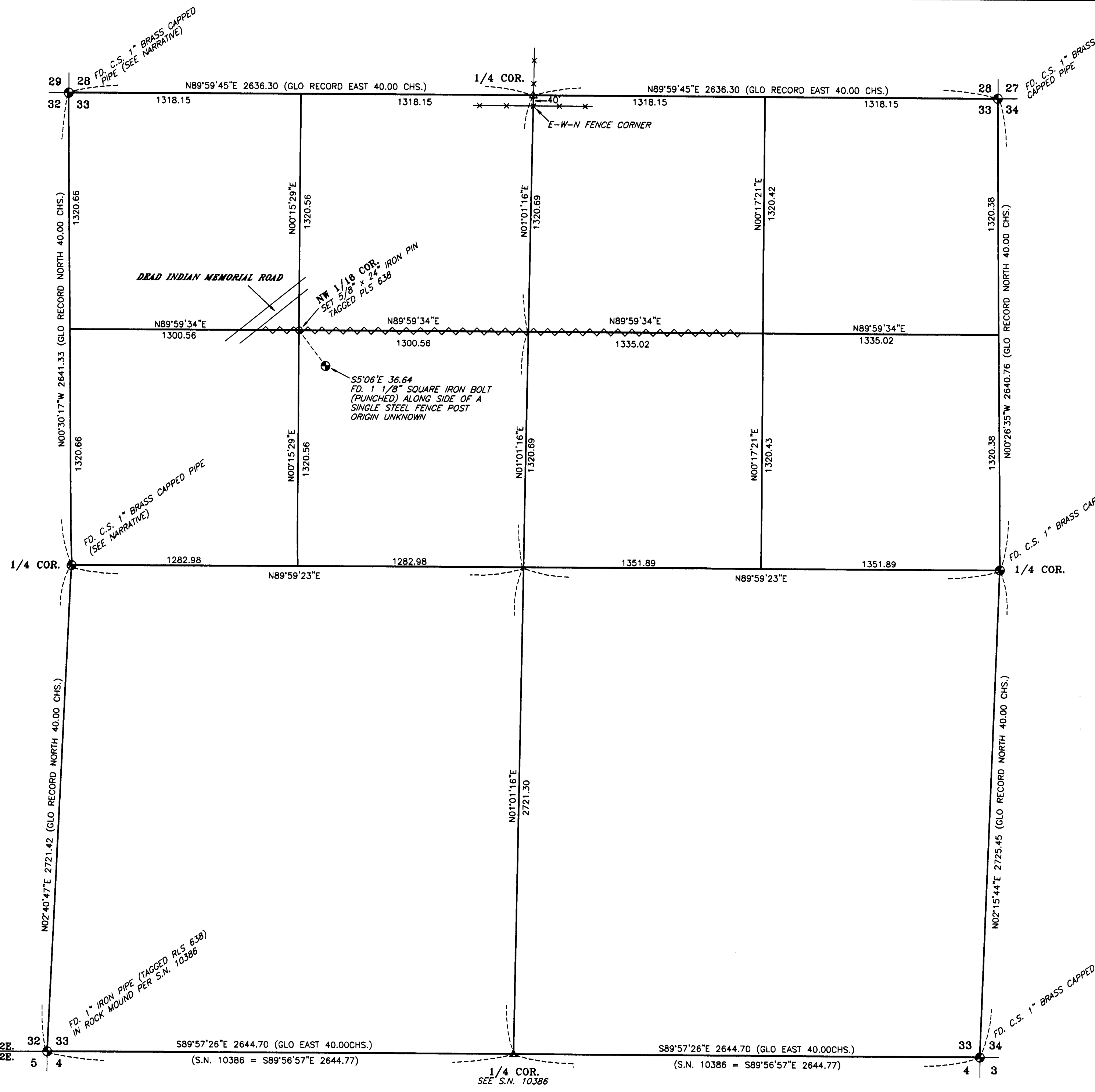
**BASIS OF BEARINGS**

Oregon State Plane (South Zone) NAD 27, rotated 1°26'10" C.C.W. to TRUE at the S.W. corner of Section 33. Distances shown are Grid divided by 0.99985. The location and values of these State Plane coordinates are on file in the Office of the Jackson County Surveyor as Job File No. 95-17.

REGISTERED  
 PROFESSIONAL  
 LAND SURVEYOR

*George Burrell*

OREGON  
 JULY 10, 1964  
 GEORGE R. BURRELL  
 638  
 MY CERTIFICATE EXPIRES  
 DECEMBER 31, 2003

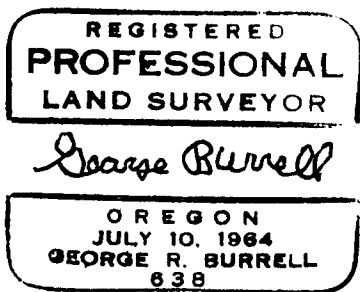


I then used this position for the basis of a double proportional determination for a position for the NW corner of section 33, and discovered this position to be within 1 foot of the 60d- spike set by CH2M/HILL Surveyor's. I then adopted these 2 corner positions as marked by the 60d- spikes, as the best evidence for the original positions. The County Surveyor monumented these two corners in 1997.

I then calculated the subdivisional lines of section 33, from which, I monumented the NW 1/16 corner and marked the lines as shown on the accompanying map with wood stakes.

**BY:**

George Burrell, PLS  
2305-C Ashland Street #261  
Ashland, Oregon 97520  
March 20, 2002



Exp. 12/31/03

