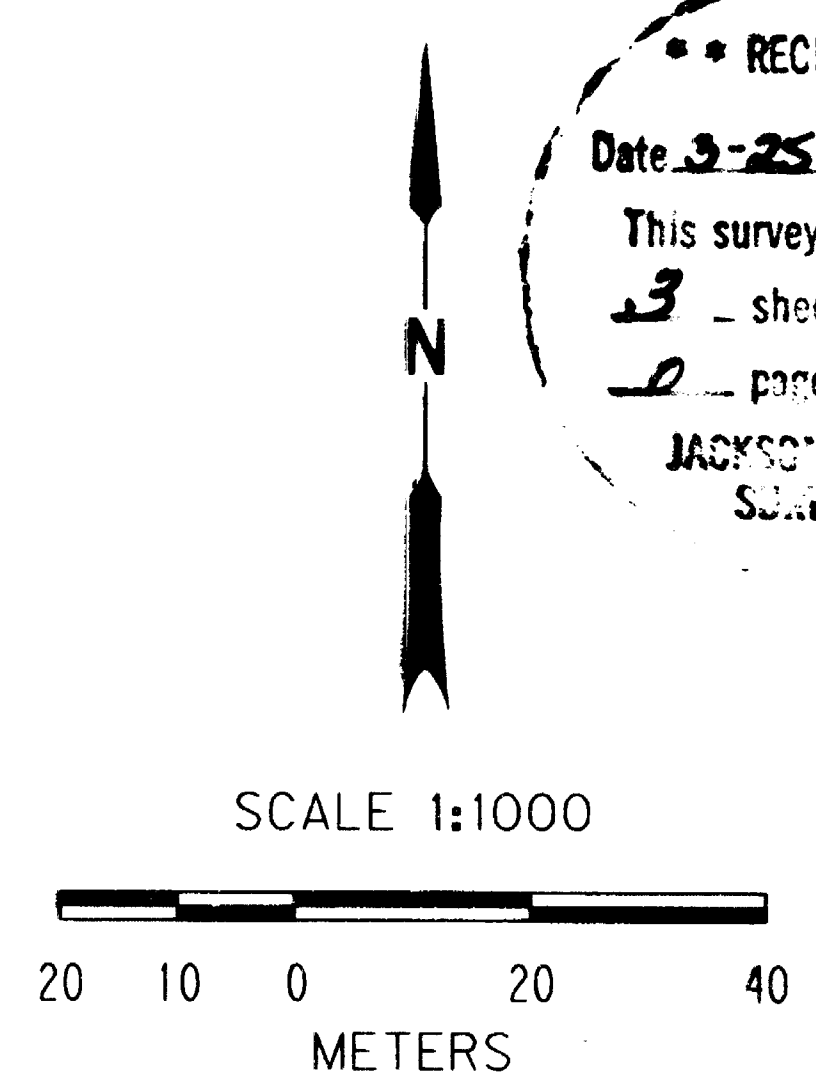
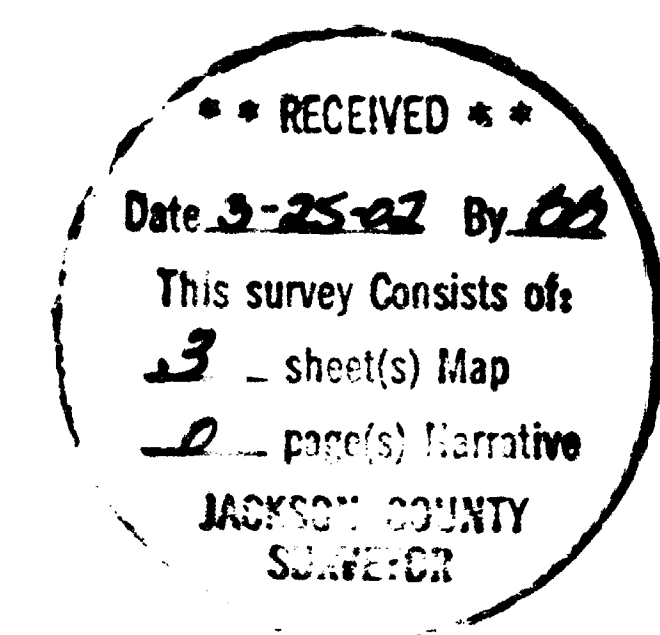
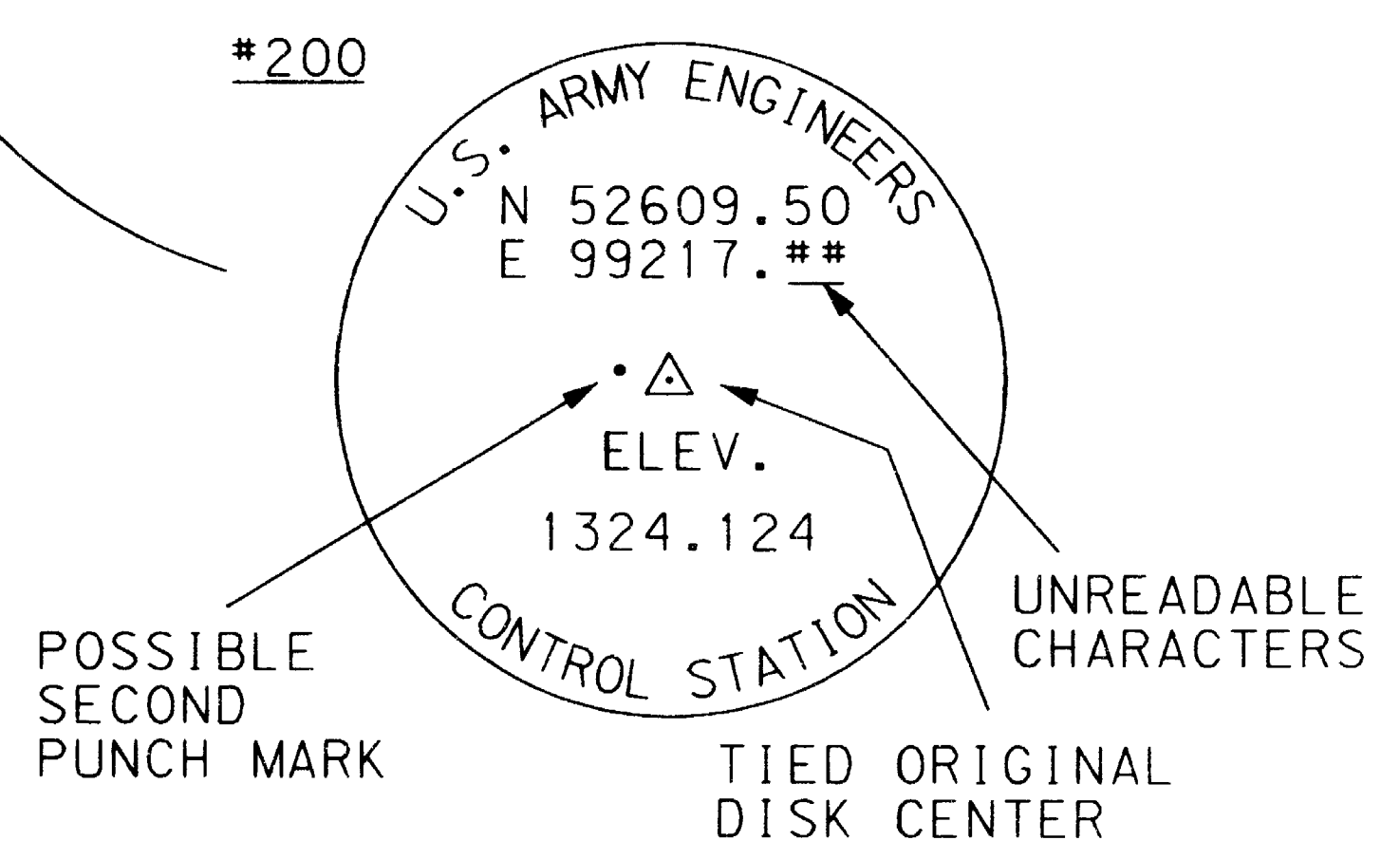
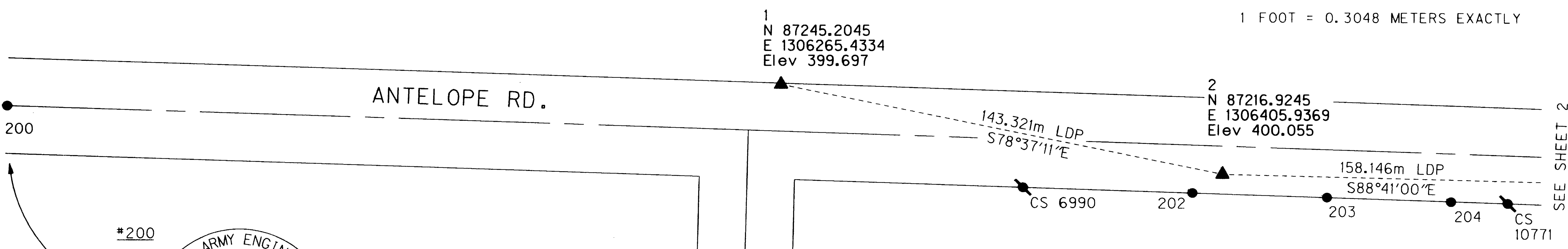
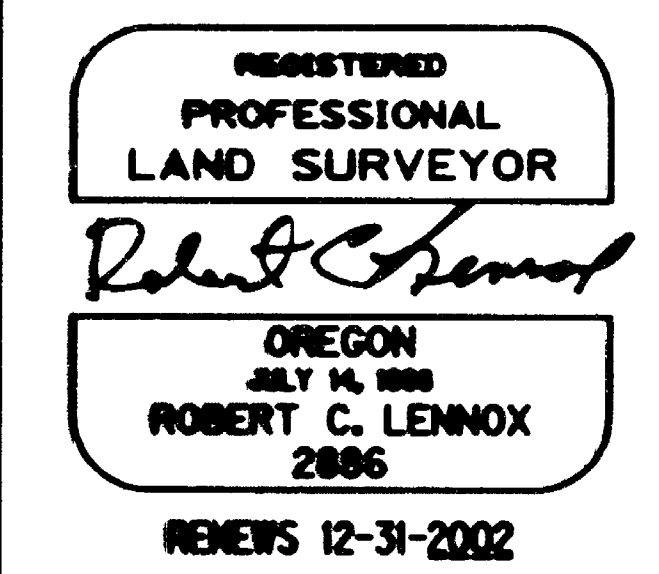


RECORD MONUMENT AND POSITION DATA

POINT	LDP NORTHING(m)	LDP EASTING(m)	REFERENCE	DESCRIPTION
200	87238.207	1306018.561	CS 13507	89 mm BRASS CAP, DOWN 70 mm IN PVC MONUMENT CASE (NO LID), SEE SKETCH
201	87035.858	1306250.621	CS 5012-A	76 mm BRASS CAP, FLUSH IN ASPHALT, SEE SKETCH
202	87210.966	1306396.327	CS 6990	19 mm IRON ROD, BENT SLIGHTLY TO NORTH, TIED AT BEND, DOWN 60 MM IN ASPHALT
203	87209.620	1306439.325	CS 15336	16 mm IRON ROD W/YELLOW PLASTIC CAP, FLUSH, STAMPED "D.W. EDWARDS LS 741"
204	87208.240	1306478.893	CS 5395	19 mm IRON ROD, UP 20 mm



DATE	JVO 09-01
CALCULATED	JVO 01-07-02
DRAWN	RCL 02-07-02
CHECKED BY DATE	03-14-02
PLOT DATE	

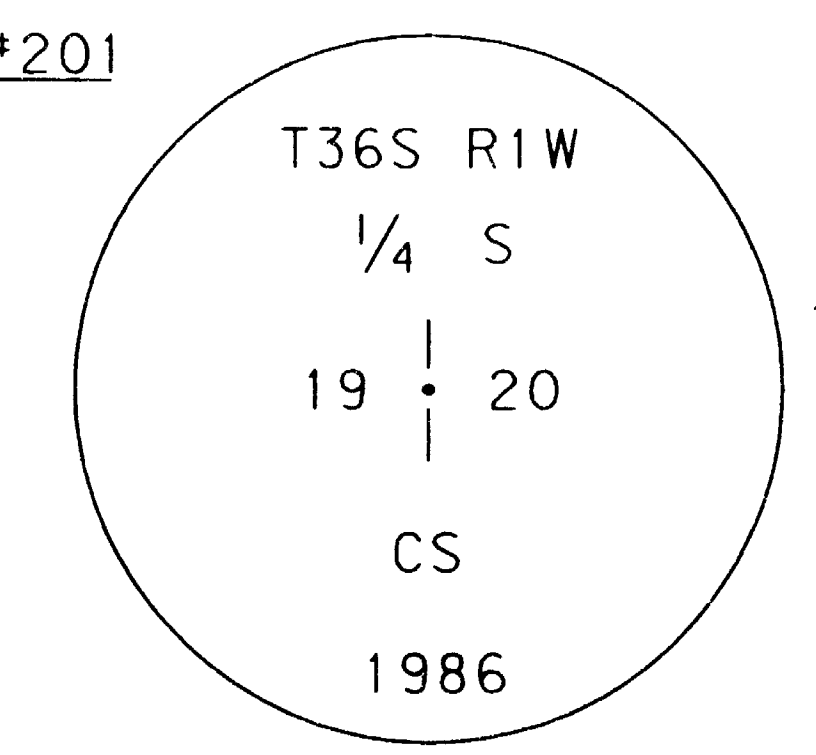


LEGEND

- ▲ SET 16 mm X 760 mm REBAR WITH RED PLASTIC CAP STAMPED "OTAK CONTROL"
- FOUND MONUMENT, DESCRIPTION AS NOTED
- MONUMENT NOTED ON COUNTY SURVEY (CS ****) SEARCHED FOR BUT NOT FOUND
- LDP LOCAL DATUM PLANE VALUES (SEE NARRATIVE ON SHEET 1)

TABLE OF CONTENTS

SHEET	DESCRIPTION
1	NARRATIVE, CONTROL AND MONUMENT POSITIONS
2	CONTROL AND MONUMENT POSITIONS
3	CONTROL AND MONUMENT POSITIONS



NARRATIVE

PURPOSE OF SURVEY
 THE PURPOSE OF THIS SURVEY WAS TO RECOVER EXISTING MONUMENTS ALONG THE PROPOSED ROUTE OF A STREET WIDENING PROJECT ON ANTELOPE ROAD AT THE INTERSECTION OF HIGHWAY 62 (CRATER LAKE HIGHWAY) IN WHITE CITY. BECAUSE CONSTRUCTION MAY DISTURB OR DESTROY EXISTING RECORD SURVEY MONUMENTS, THIS SURVEY ALSO SERVES TO REFERENCE THOSE MONUMENTS IN CONFORMANCE WITH O. R. S. 209.150(2)(A) AND O. R. S. 209.150(3). THE ROW LINES SHOWN ON THIS SURVEY ARE FOR REFERENCE ONLY AND ARE NOT INTENDED TO INDICATE THE TRUE LOCATIONS OF THOSE LINES.

BASIS OF BEARING
 THE BASIS OF BEARING FOR THIS SURVEY IS GRID NORTH DERIVED FROM GPS OBSERVATIONS.

HORIZONTAL DATUM
 GPS OBSERVATIONS WERE MADE ON AUGUST 8, 2001 USING LEICA SR399 DUAL FREQUENCY RECEIVERS. THE OBSERVATIONS WERE PROCESSED USING LEICA SKI VERSION 2.3. TERRESTRIAL OBSERVATIONS WERE MADE DURING THE WEEK OF AUGUST 6-10, 2001 USING A GEODIMETER 610 TOTAL STATION INSTRUMENT. GPS AND TERRESTRIAL OBSERVATIONS WERE ADJUSTED SIMULTANEOUSLY USING THE LEAST SQUARES ADJUSTMENT PROGRAM STAR*NET-PRO, VERSION 6.0.18. THE NETWORK WAS CONSTRAINED TO THE RECORD NAD '83(98) OREGON SOUTH STATE PLANE COORDINATES OF HARN STATIONS "H388" AND "1214B".

LOCAL DATUM PLANE (LDP) COORDINATES
 THE LDP COORDINATES SHOWN IN THIS SURVEY ARE STATE PLANE COORDINATES THAT HAVE BEEN SCALED FROM THE STATE PLANE GRID TO THE GROUND SURFACE. THE STATE PLANE VALUES WERE SCALED TO THE LDP USING THE COMBINED (GRID AND ELEVATION) SCALE FACTOR CALCULATED AT STATION 3. TO CONVERT FROM LDP TO STATE PLANE COORDINATES, MULTIPLY THE LDP VALUES BY 0.9999185146.

VERTICAL DATUM
 LEVELS WERE RUN USING A LEICA NA2002 ELECTRONIC LEVEL. ALL LINES AND CIRCUITS WERE CONSTRAINED TO THE O.D.O.T. BENCH MARK "R607"; A 76 MILLI-METER BRASS DISK IN CONCRETE AT STATION 2030+00, 90FT LEFT OF HIGHWAY 62 ENGINEERS CENTERLINE. THE PUBLISHED NGVD '29(47) VALUE (1319.146FT) WAS CONVERTED TO NAVD '88 METERS USING CORPSCON, VERSION 5.11.08. THE DATA WAS ADJUSTED USING THE LEAST SQUARES ADJUSTMENT PROGRAM STAR*LEV, VERSION 1.26.

PRE-CONSTRUCTION SURVEY
 ANTELOPE ROAD - AGATE TO DIVISION
 METRIC SURVEY REGION 3
 LOCATED IN THE NE 1/4 OF SECTION 19, AND THE NW AND NE 1/4 OF SECTION 20, T.36S., R.1W., W.M. JACKSON COUNTY, OREGON
 FOR OREGON DEPARTMENT OF TRANSPORTATION



11046-004-020
PROJECT NO.
11046PCS.DGN
FILE NO.
1 OF 3
SHEET NO.

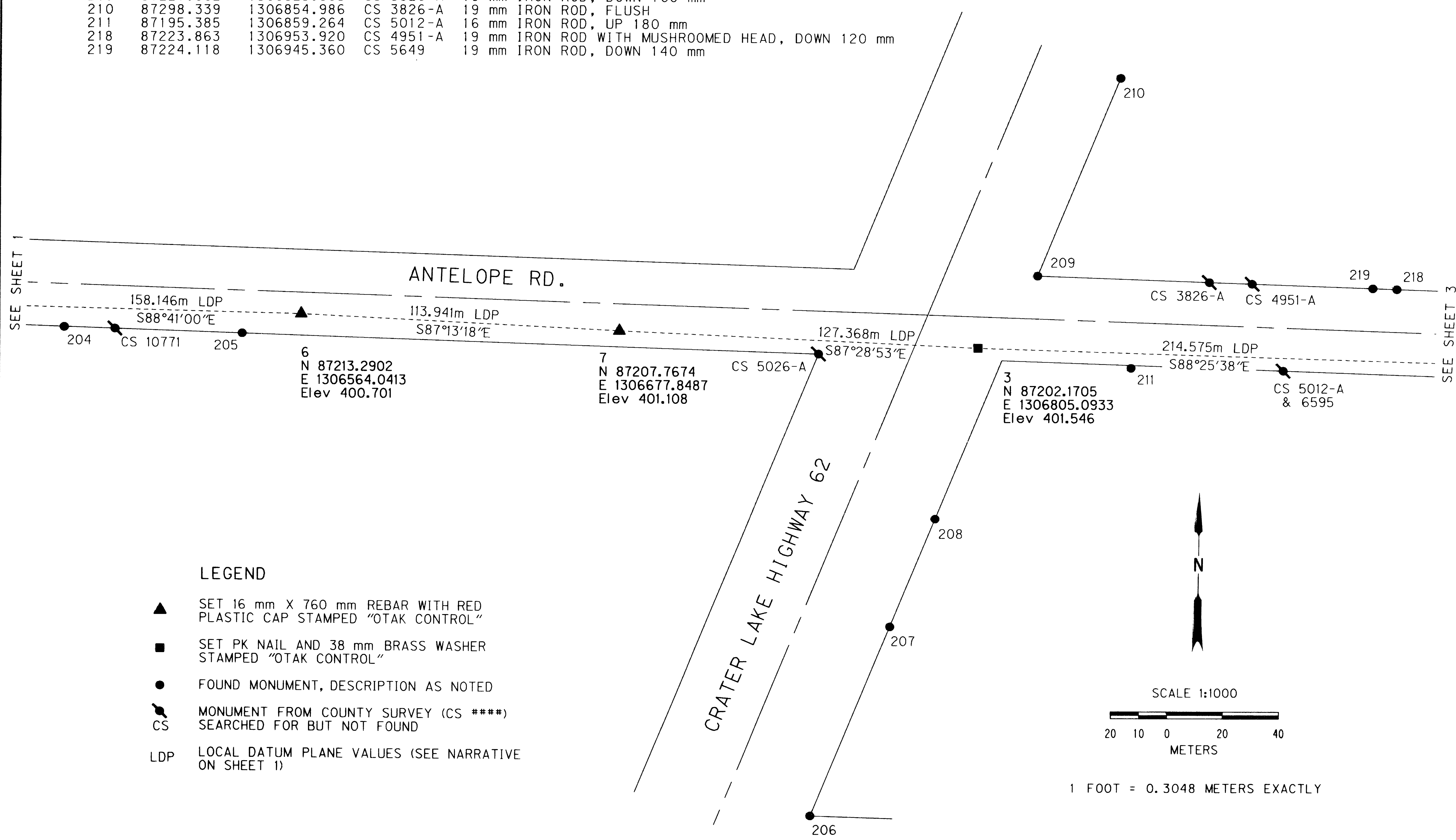
RECORD MONUMENT AND POSITION DATA

POINT	LDP NORTHING(m)	LDP EASTING(m)	REFERENCE	DESCRIPTION
204	87208.240	1306478.893	CS 5395	19 mm IRON ROD, UP 20 mm
205	87206.354	1306542.912	CS 5026-A	19 mm IRON ROD, DOWN 200 mm
206	87035.426	1306746.684	CS 5012-A	19 mm IRON ROD, FLUSH
207	87102.959	1306774.586	CS 5012-A	19 mm IRON ROD, DOWN 120 mm
208	87141.420	1306790.322	CS 5012-A	19 mm IRON ROD, DOWN 230 mm
209	87227.902	1306825.965	CS 3826-A	19 mm IRON ROD, DOWN 100 mm
210	87298.339	1306854.986	CS 3826-A	19 mm IRON ROD, FLUSH
211	87195.385	1306859.264	CS 5012-A	16 mm IRON ROD, UP 180 mm
218	87223.863	1306953.920	CS 4951-A	19 mm IRON ROD WITH MUSHROOMED HEAD, DOWN 120 mm
219	87224.118	1306945.360	CS 5649	19 mm IRON ROD, DOWN 140 mm

** RECEIVED **
 Date: 8-25-02 By: AB
 This survey Consists of:
3 sheet(s) Map
0 page(s) Narrative
 JACKSON COUNTY SURVEYOR

DATE JVO 09-01
 CALCULATED JVO 01-07-02
 DRAWN RCL 02-07-02
 CHECKED BY DATE 03-14-02
 PLOT DATE

REGISTERED
**PROFESSIONAL
 LAND SURVEYOR**
Robert C. Lennox
 OREGON
 JULY 14, 1988
ROBERT C. LENNOX
 2006
 RENEWS 12-31-2002



PRE-CONSTRUCTION SURVEY
 ANTELOPE ROAD - AGATE TO DIVISION
 METRIC SURVEY DIVISION REGION 3
 LOCATED IN THE NE 1/4 OF SECTION 19, AND THE
 NW AND NE 1/4 OF SECTION 20, T.36S., R.1W., W.M.
 JACKSON COUNTY, OREGON
 FOR OREGON DEPARTMENT OF TRANSPORTATION

otak
 Incorporated
 17355 SW Boones Ferry Rd.
 Lake Oswego, Oregon 97035
 Phone: (503) 635-3618
 FAX: (503) 635-5395

11046-004-020
 PROJECT NO.
 11046PCS.DGN
 FILE NO.
 2 OF 3
 SHEET NO.