

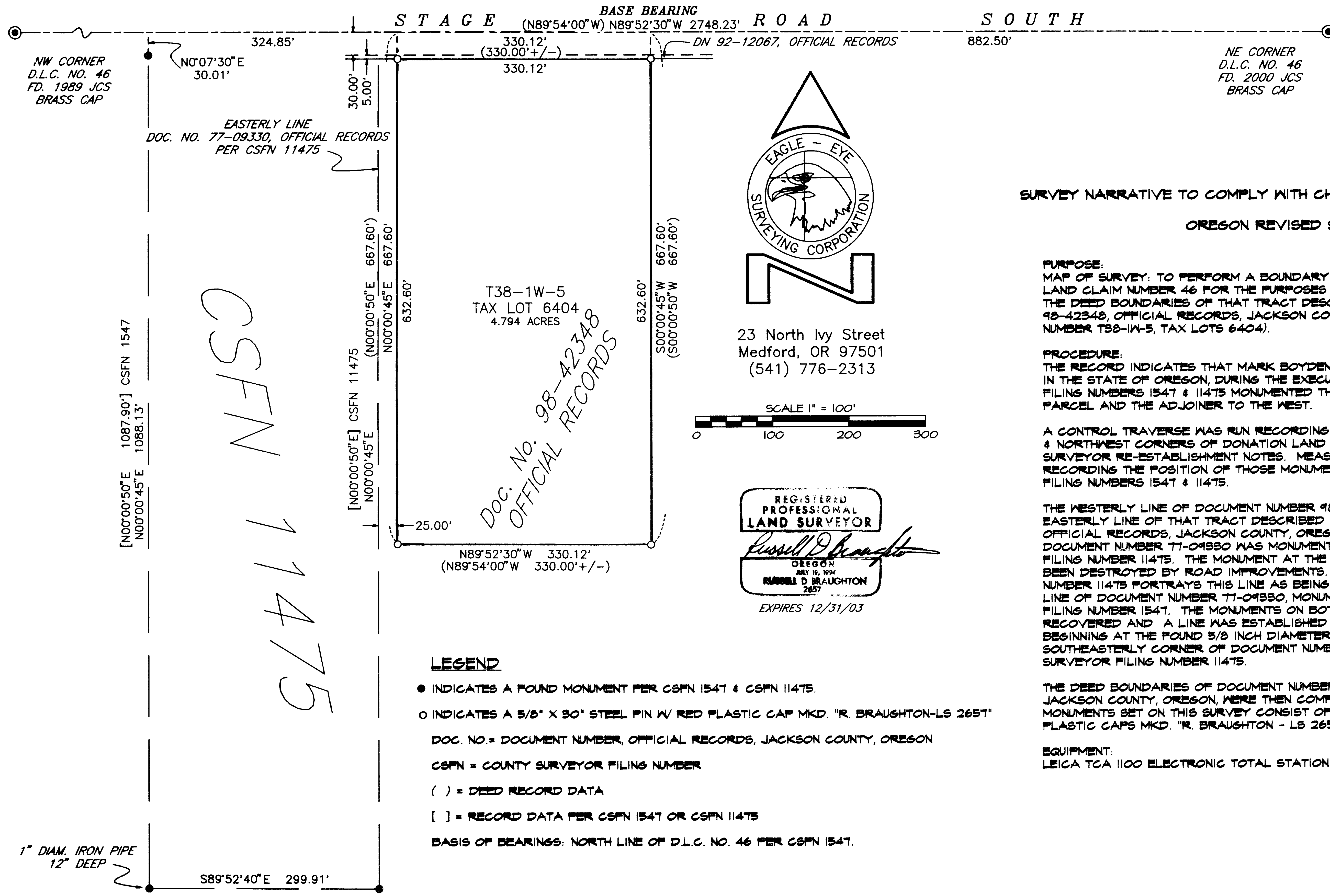
MAP OF SURVEY

LOCATED in the SW 1/4 of Section 5, T. 38 S., R. 1 W., W.M.,
situated in Donation Land Claim Number 46, Jackson County, Oregon

for
Southern Oregon Nursery Inc.
2922 South Pacific Highway
Medford, Oregon 97501

January 18, 2002

**** RECEIVED ****
Date: 3-26-02 By: *BB*
This survey consists of:
1 sheet(s) Map
1 parcel Narrative
JACKSON COUNTY
SURVEYOR



CSFN 11475

SURVEY NARRATIVE TO COMPLY WITH CHAPTER 209, PARAGRAPH 250, OREGON REVISED STATUTES

PURPOSE:
MAP OF SURVEY: TO PERFORM A BOUNDARY SURVEY LOCATED IN DONATION LAND CLAIM NUMBER 46 FOR THE PURPOSES OF LOCATING AND MONUMENTING THE DEED BOUNDARIES OF THAT TRACT DESCRIBED IN DOCUMENT NUMBER 98-42348, OFFICIAL RECORDS, JACKSON COUNTY, OREGON (ASSESSOR'S MAP NUMBER T38-1W-5, TAX LOTS 6404).

PROCEDURE:
THE RECORD INDICATES THAT MARK BOYDEN, A REGISTERED LAND SURVEYOR IN THE STATE OF OREGON, DURING THE EXECUTION OF COUNTY SURVEYOR FILING NUMBERS 1547 & 11475 MONUMENTED THE BOUNDARIES OF THE MOTHER PARCEL AND THE ADJOINER TO THE WEST.

A CONTROL TRAVERSE WAS RUN RECORDING THE LOCATION OF THE NORTHEAST & NORTHWEST CORNERS OF DONATION LAND CLAIM NUMBER 46 PER COUNTY SURVEYOR RE-ESTABLISHMENT NOTES. MEASUREMENTS WERE ALSO TAKEN RECORDING THE POSITION OF THOSE MONUMENTS SET ON COUNTY SURVEYOR FILING NUMBERS 1547 & 11475.

THE WESTERLY LINE OF DOCUMENT NUMBER 98-42348 IS BOUNDED BY THE EASTERLY LINE OF THAT TRACT DESCRIBED IN DOCUMENT NUMBER 77-09330, OFFICIAL RECORDS, JACKSON COUNTY, OREGON. THE EASTERLY LINE OF DOCUMENT NUMBER 77-09330 WAS MONUMENTED PER COUNTY SURVEYOR FILING NUMBER 11475. THE MONUMENT AT THE NORTH END OF THIS LINE HAS BEEN DESTROYED BY ROAD IMPROVEMENTS. COUNTY SURVEYOR FILING NUMBER 11475 PORTRAYS THIS LINE AS BEING PARALLEL TO THE WESTERLY LINE OF DOCUMENT NUMBER 77-09330, MONUMENTED ON COUNTY SURVEYOR FILING NUMBER 1547. THE MONUMENTS ON BOTH ENDS OF THIS LINE WERE RECOVERED AND A LINE WAS ESTABLISHED PARALLEL TO THESE MONUMENTS BEGINNING AT THE FOUND 5/8 INCH DIAMETER IRON PIN MONUMENTING THE SOUTHEASTERLY CORNER OF DOCUMENT NUMBER 77-09330 PER COUNTY SURVEYOR FILING NUMBER 11475.

THE DEED BOUNDARIES OF DOCUMENT NUMBER 98-42348, OFFICIAL RECORDS, JACKSON COUNTY, OREGON, WERE THEN COMPUTED AND MONUMENTED AS SHOWN. MONUMENTS SET ON THIS SURVEY CONSIST OF 5/8" X 30" STEEL PINS WITH RED PLASTIC CAPS MKD. "R. BRAUGHTON - LS 2657".

EQUIPMENT:
LEICA TCA 1100 ELECTRONIC TOTAL STATION.

LEGEND

- INDICATES A FOUND MONUMENT PER CSFN 1547 & CSFN 11475.
- INDICATES A 5/8" X 30" STEEL PIN W/ RED PLASTIC CAP MKD. "R. BRAUGHTON-LS 2657"
- DOC. NO. = DOCUMENT NUMBER, OFFICIAL RECORDS, JACKSON COUNTY, OREGON
- CSFN = COUNTY SURVEYOR FILING NUMBER
- () = DEED RECORD DATA
- [] = RECORD DATA PER CSFN 1547 OR CSFN 11475
- BASIS OF BEARINGS: NORTH LINE OF D.L.C. NO. 46 PER CSFN 1547.

T38-1W-5 TAX LOT 6404

SHEET 1 OF 1