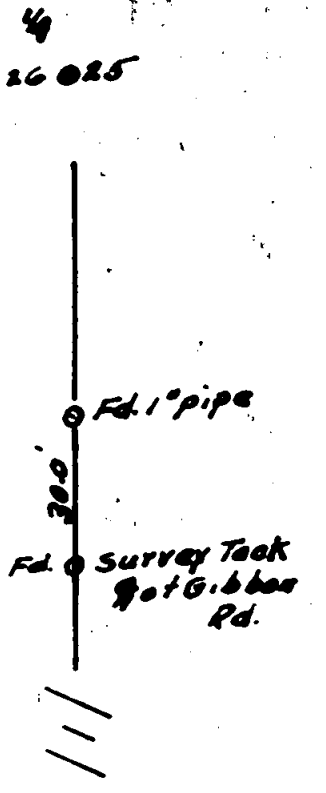
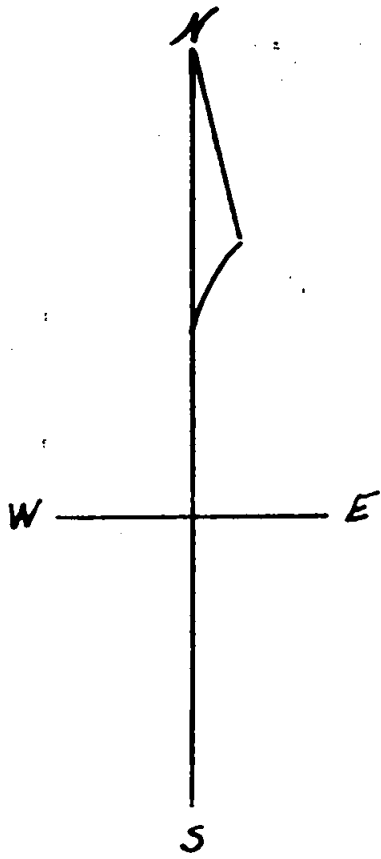


Arthur Rhymer, Property

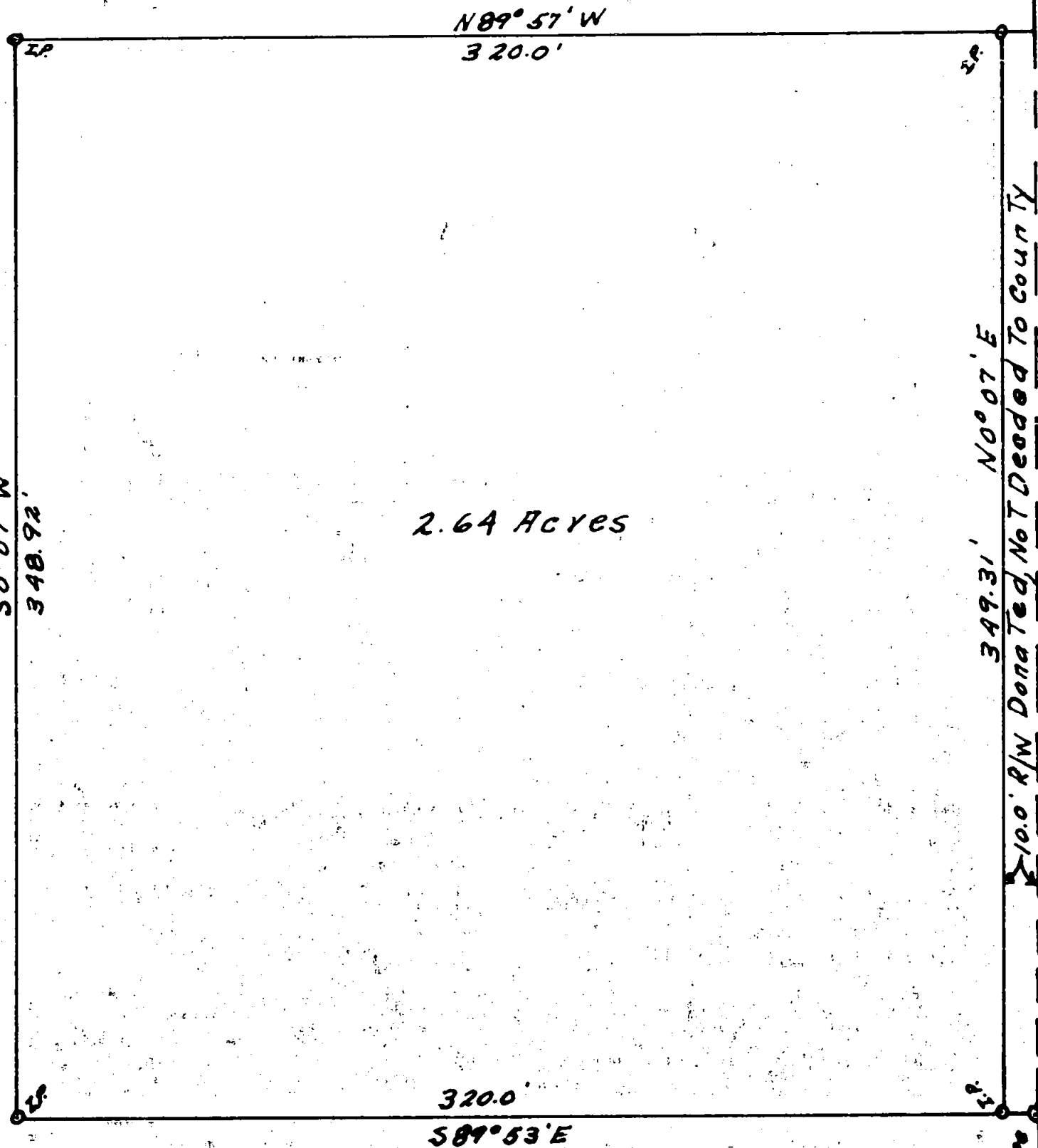
Sec. 26, T. 36S R. 2W W.M.

Scale 1" = 50 FT.

June 1961

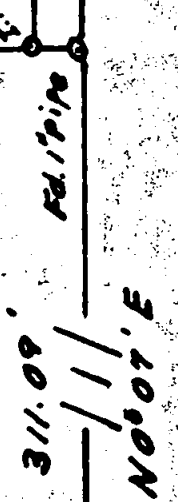


Bearing Used
 Section Line 26/25
 Taken from Survey
 of Roquelands Irr-
 igated Orchard Tracts

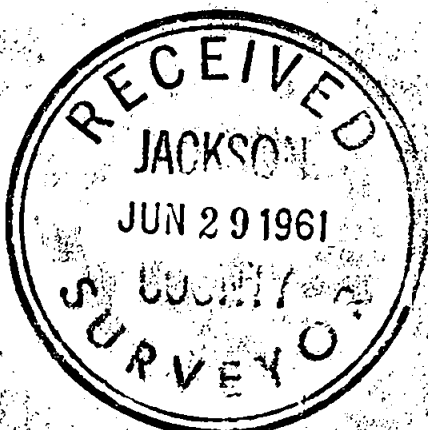


349.31' N 0° 07' E
 100' R/W Donated, Not Deeded To County

Azalea Drive



26 25
 26 36
 T. 36S, R. 2W, W.M.
 Rd. 2" pipe



Survey Narrative to Comply with Paragraph 209.250,
Oregon Revised Statutes

For:

Arthur Rhymer
6081 Axalea Drive, Central Point

Purpose:

To locate the approximate North one half of a five acre tract.

Procedure:

I found a 2" pipe that marks the S.E. Corner of Section 26 T36S R2W a 1" pipe which is a corner on the original owners property line to the East and on the Section line 26/25, a survey tack in the center of Gibbon Road, a 1" pipe 30 feet North of the tack in Gibbon Road, and a 5/8" iron pin marking the N.W. Corner, of the five acres, which is also the N. W. Corner of this property. I verified the above mentioned points by sighting through and they were on line. I chained from the S.E. Corner of Section 26 North to the first mentioned 1" pipe, then turned 90° left and chained 10.0 feet to set a 10.0 foot right of way donated to Jackson County, then turned 90° to the right and chained the required distance as shown on the plat for the total 5 acres to put me on the North line, I then turned the required angle and chained the distance shown on the plat less 10.0 feet and missed the existing pin on the N.W. Corner 0.1 feet for distance and 0.1 feet for line. I then produced my 90° line to the left as explained above and chained the width of the tract less 10.0 feet to set the S.W. Corner then turned 90° to the right and chained to the N.W. Corner for a closure.

