

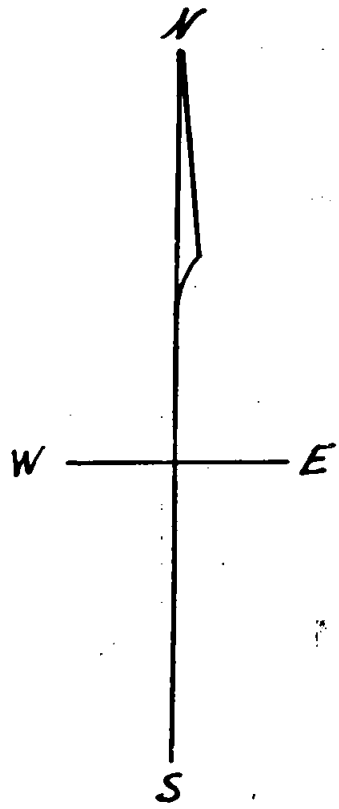
C.W. & Gladys Cornelius, Property

Sec. 26 T36S R2W WM

Scale 1"=50ft.

June 1961

1/4  
26 25

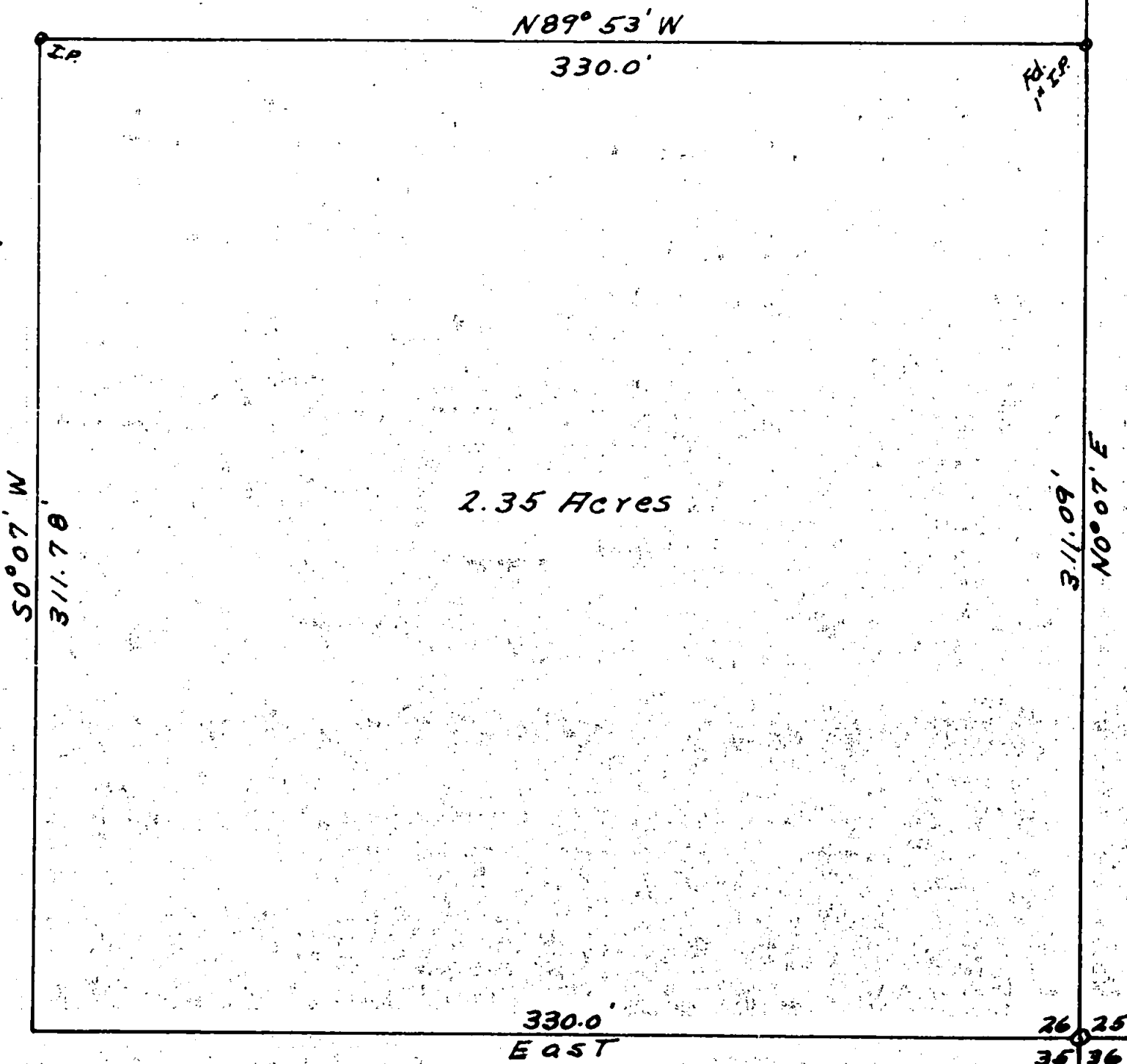


Fd. 1" pipe  
300  
Fd. Survey Tack & Gibbon Rd.

|||  
N0°07'E  
& Hazelca Drive

&  
Orr Drive

Bearing Used  
Section line 26 | 25  
Taken from Survey  
of Roquelands Irrigation  
Orchard Tracts



T36S, R2W WM  
Fd. 2" pipe  
& BT's

REGISTERED  
OREGON  
LAND SURVEYOR

*Ralph J. Ellis*  
OCTOBER 4, 1957  
RALPH J. ELLIS  
416

RECEIVED  
JACKSON  
JUN 29 1961  
COUNTY  
SURVEYOR

Survey Narrative to Comply with Paragraph 209.250,  
Oregon Revised Statutes

For:

C.W. and Gladys Cornelius  
497 Orr Drive, Central Point

Purpose:

To locate the tract of land left after selling the approximate north one half of a five acre tract.

<sup>a</sup>  
Procedure:

See survey No. 1721 for corners found and other points. The S.E. Corner of the tract was marked by the 2" pipe which is the S.E. Corner of Section 26. I had previously established the east line and the North line of this tract, see above survey. Occupying the S.E. Corner I turned the required angle from the East line and chained the required distance as shown on the plat and deed to establish the South line. I then turned the required angle at the S.W. Corner and chained to the previously established N.W. Corner which is the S.W. Corner of the Arthur Rhymer property for a closure.

