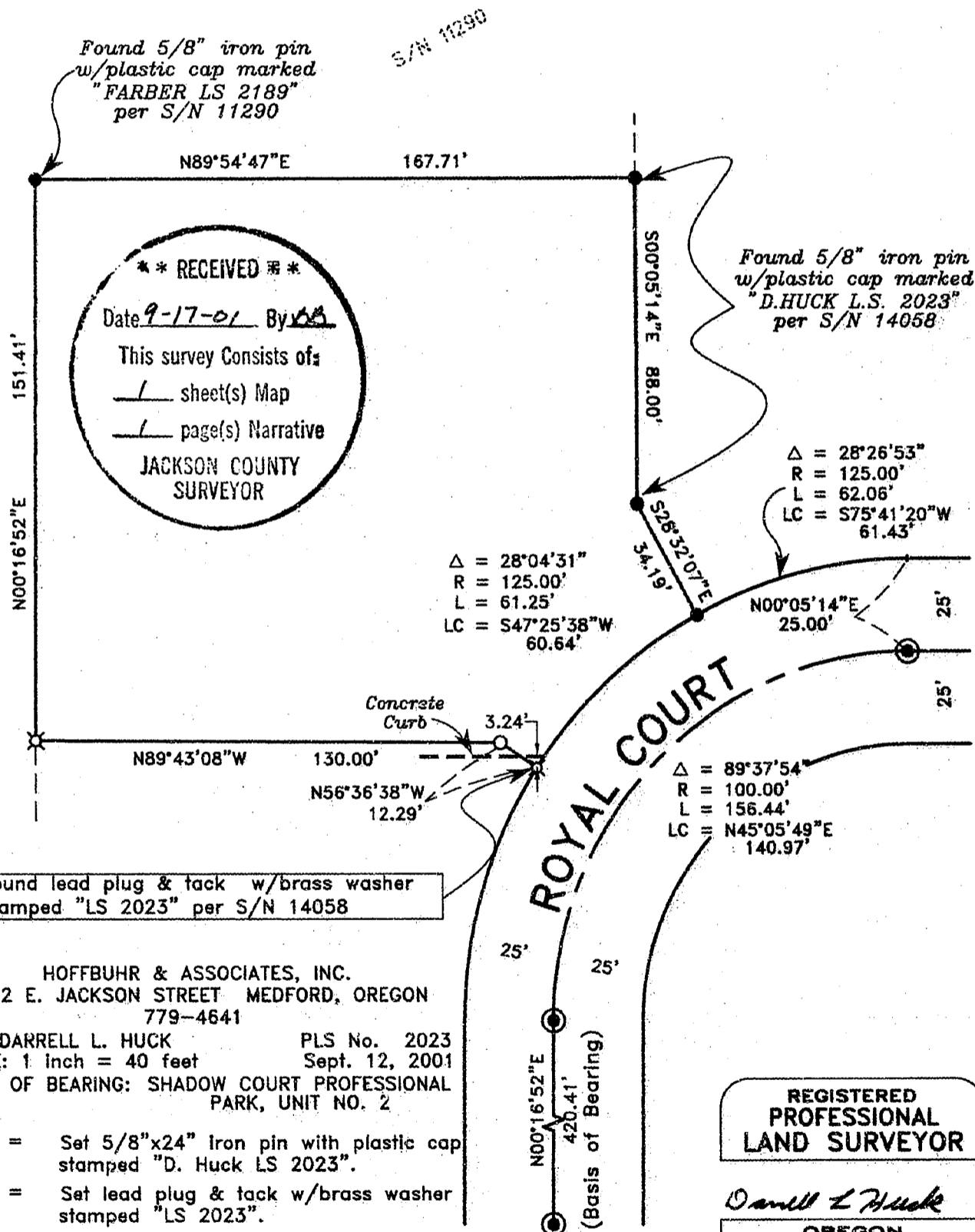


# MAP OF SURVEY

For  
**ROGUE FEDERAL CREDIT UNION**

Located in:

The N.W. 1/4 of Section 19, T.37S., R.1W., W.M. in  
Lot 6, Block 1 of SHADOW COURT  
PROFESSIONAL PARK, UNIT NO. 2, to the  
City of Medford, Jackson County, Oregon



HOFFBUHR & ASSOCIATES, INC.  
1062 E. JACKSON STREET MEDFORD, OREGON  
779-4641

BY: DARRELL L. HUCK      PLS No. 2023  
SCALE: 1 inch = 40 feet      Sept. 12, 2001  
BASIS OF BEARING: SHADOW COURT PROFESSIONAL  
PARK, UNIT NO. 2

- = Set 5/8"x24" Iron pin with plastic cap stamped "D. Huck LS 2023".
- ⊗ = Set lead plug & tack w/brass washer stamped "LS 2023".
- = Found 5/8" Iron pin per SHADOW COURT PROFESSIONAL PARK UNIT NO. 2 unless noted otherwise.
- ⊙ = Found brass cap monument.

37 1W 19BD, TL 1104

**REGISTERED  
PROFESSIONAL  
LAND SURVEYOR**

*Darrell L. Huck*

OREGON  
FEBRUARY 4, 1983  
DARRELL L. HUCK  
2023

Expires 6/30/2008

(00289mos.dwg)