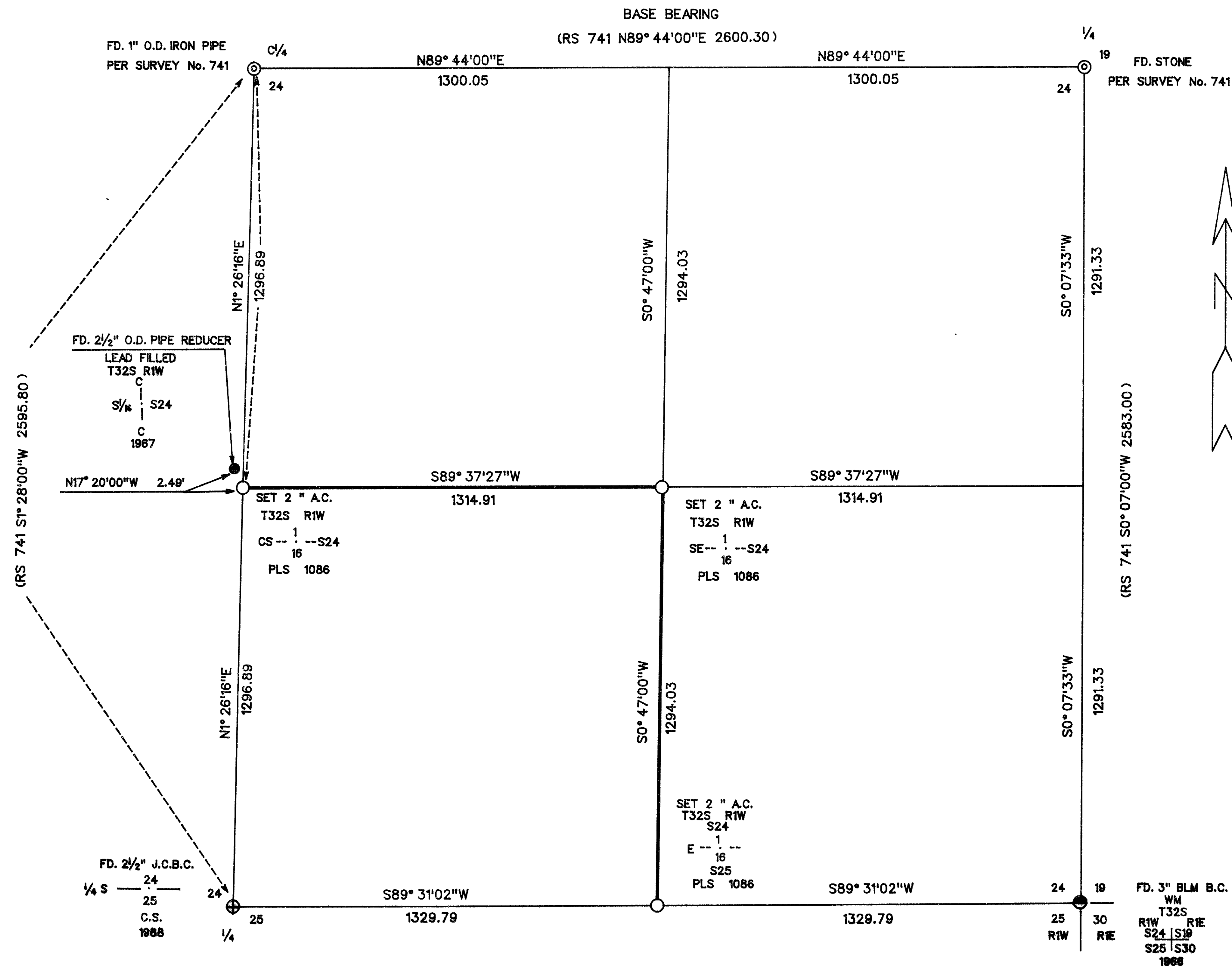


MAP OF SURVEY

LOCATED IN THE SOUTHEAST QUARTER
OF SECTION 24, TOWNSHIP 32 SOUTH,
RANGE 1 WEST, WILLAMETTE MERIDIAN
JACKSON COUNTY, OREGON



SURVEY FOR

BOISE CASCADE
TIMBER AND WOOD PRODUCTS GROUP
P.O. BOX 100
MEDFORD, OREGON 97501

LEGEND

- ⊕ FOUND JACKSON COUNTY MONUMENT
- FOUND 3" BLM BRASS CAP
- ⊙ FOUND MONUMENT SET SURVEY NUMBER 741
- SET 5/8" BY 30" IRON PIN WITH 2" ALUM. CAP MARKED PLS 1086
- FOUND MONUMENT AS NOTED UNRECORDED
- () RECORD DATA
- LINE MARKED WITH RED PAINTED BLAZES, AND POSTED WITH ALUM. TAGS MARKED P/L BCC

BASIS OF BEARING

SURVEY NUMBER 741

SCALE

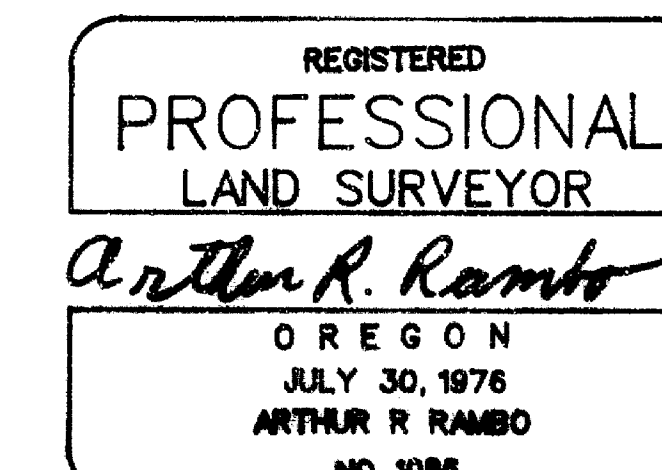
1" = 300'

DATE

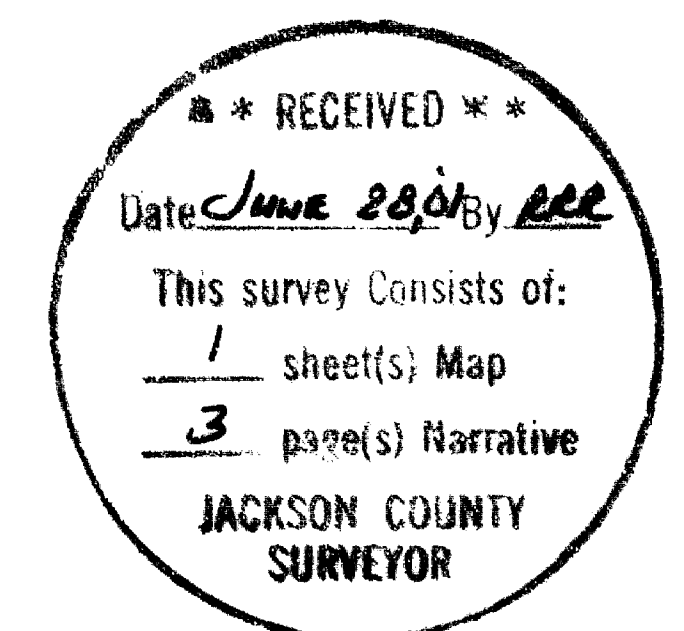
JUNE 26, 2001

SURVEY BY

RAMBO SURVEYING
ARTHUR R. RAMBO
735 VISTA PARK DRIVE
EAGLE POINT, OREGON 97524



EXPIRES DECEMBER 31, 2002



TAX LOT No. 32-1W 600

JUN 21 2001
16967

An 11 inch diameter Cedar bears N46°47'W, 43.7 feet
marked E1/16S24 in upper face, BT in lower face.

Southeast one-sixteenth corner Section 24, Township 32 South, Range 1
West. At the corner point I set a 5/8 by 30 inch iron pin with a 2"
diameter Aluminum cap marked:

T32S R1W
1
SE + S24
16
PLS 1086

FROM WHICH:

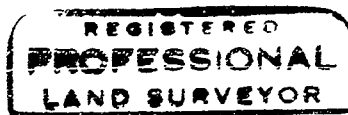
An 11 inch diameter Cedar bears S49°59'W, 61.8 feet
marked SE1/16 S24 in upper face, BT in lower face.

A 17.5 inch diameter Douglas Fir bears N83°51'W, 77.6 feet
marked SE1/16 S24 in upper face, BT in lower face.

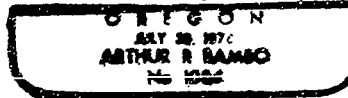
At the Center one-quarter corner I marked two new bearing trees.

A 5.5 inch diameter White Fir bears N74°36'W, 4.3 feet
marked C 1/4 S24 in upper face, BT in lower face.

A 7.5 inch diameter White Fir bears S18°06'E, 39.9 feet
marked C 1/4 S24 in upper face, BT in lower face



Arthur R. Rambo



Expires December 31, 2002

Tax Lot No. 32-1W (600)

16967

CORNERS SET THIS SURVEY:

All measurements to bearing trees are to the center of tree at base.
All bearing trees have a Brass washer marked PLS 1086 nailed to lower face.

Centersouth one-sixteenth corner of Section 24, Township 32 South, Range 1 West. At the corner point I set a 5/8 by 30 inch iron pin with a 2" diameter Aluminum cap marked:

T32S R1W
1
CS + S24
16
PLS 1086

FROM WHICH:

A 26 inch diameter White Fir bears S19°07'W, 86.2 feet, marked CS1/16S24 in upper face, BT in lower face.

An 8 inch diameter Douglas Fir bears S19°36'E, 67.1 feet marked CS1/16S24 in upper face, BT in lower face.

A 2 1/2 inch diameter lead filled pipe reducer bears N17°20'W, 2.49 feet (see map for marking).

East one-sixteenth corner common to Section 24 and Section 25, Township 32 South, Range 1 West. At the corner point I set a 5/8 by 30 inch iron pin with a 2" diameter Aluminum cap marked:

T32S R1W
S24
1
E +
16
S25
PLS 1086

FROM WHICH:

An 8.5 inch diameter Douglas Fir bears S53°42'E, 70.5 feet marked E1/16S25 in upper face, BT in lower face.

16967

SURVEY NARRATIVE TO COMPLY WITH O.R.S. 209.250

LOCATION: Southeast quarter of Section 24, Township 32 South, Range 1 West, Willamette Meridian, Jackson County, Oregon.

SURVEY FOR: Boise Cascade Corp.
P.O. Box 100
Medford, Oregon
97501

SURVEY BY: Rambo Surveying
Arthur R. Rambo
735 Vista Park Drive
Eagle Point, Oregon 97524

DATE: June 26, 2001

BASIS OF BEARING: Survey Number 741, East half of the East-West Centerline

PURPOSE: To survey, mark, and post certain property lines for Boise Cascade Corporation, in the Southeast quarter of Section 24, as shown on the map to accompany this narrative.

PROCEDURE: A search of records revealed that the East one-quarter, South one-quarter and Southeast corners of Section 24 had been re-established from original evidence. Also, the Center one-quarter of Section 24 had been established by Survey number 741.

A closed traverse was run tying to these corners for control of this survey. The subdivision of the Southeast quarter of Section 24 was then calculated. Then the monuments were set and lines were marked as shown on the map to accompany this narrative

